



**Ice Machine Parts List for
Series B0150 Models**

BR0150A

BD0153W

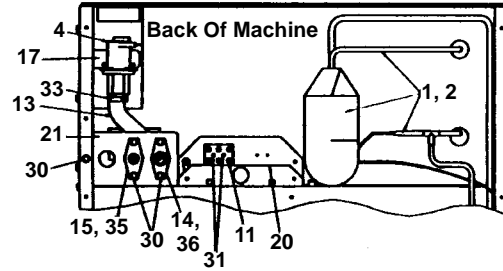
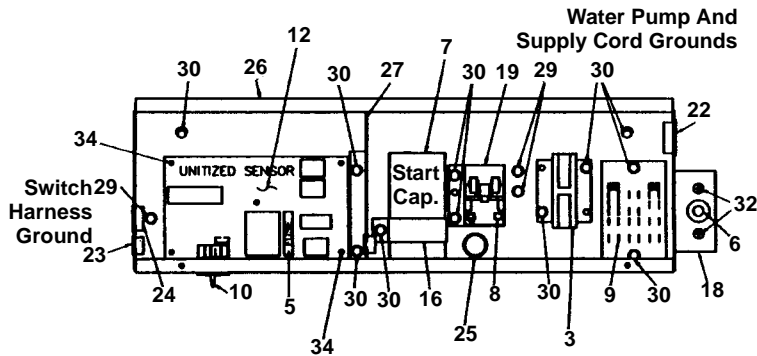
BR0151W

BY0154A

BD0152A

BY0155W

B0150 CONTROL BOX



1341

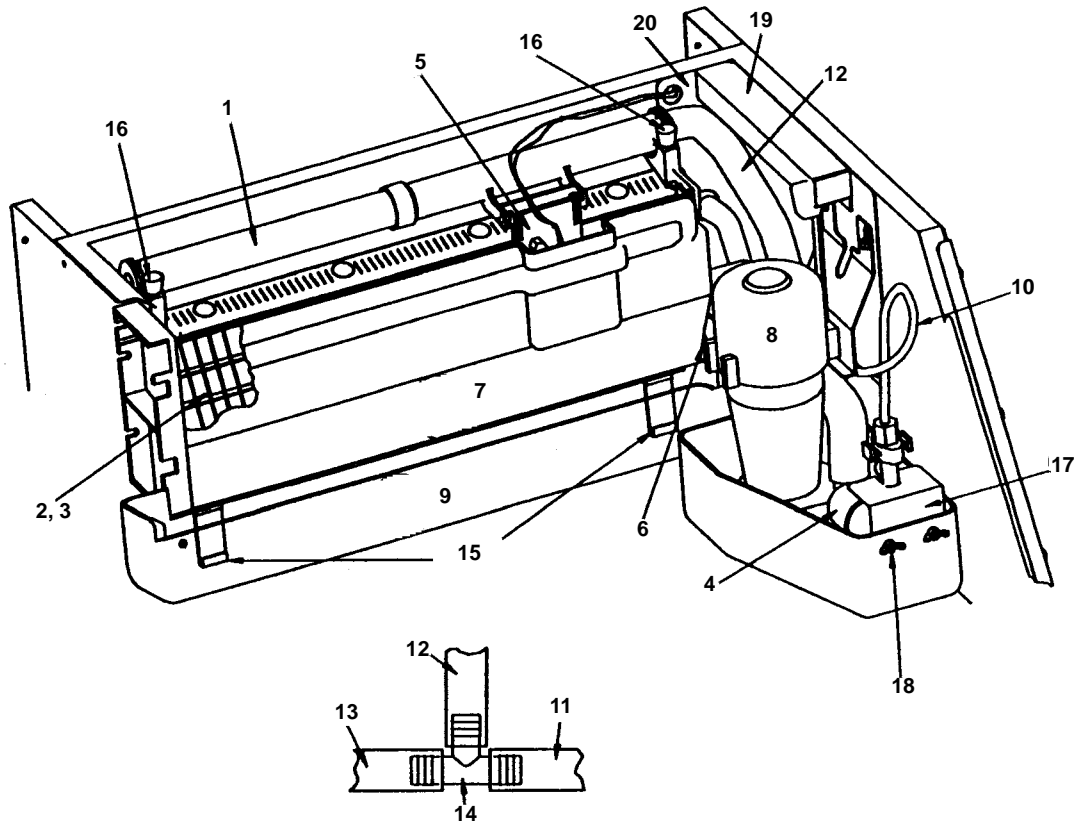
DESCRIPTION

	PART NO.
1 Capillary Tube Assembly, Air-cooled	76-2589-3
2 Capillary Tube Assembly, Water-cooled	76-2595-3
3 Contactor, 120V*	† 20-0658-9
4 Dump Valve, 115V*	000001767
5 Fuse for Control Board, 7 Amp	25-1100-3
5a Mini-fuse for Control Board, .125 Amp*	† 25-1116-9
6 High Pressure Cut-out	† 23-5536-9
7 Start Capacitor	85-0371-3
8 Start Relay	85-0374-3
9 Terminal Board With Wiring Harness	20-3150-3
10 Toggle Switch With Wiring Harness	† 20-3105-9
10a Toggle Switch Only	23-0134-3
11 Terminal Block, 230V	25-1103-3
12 Control Board (For use with all voltages)	† 76-2800-3
13 Vinyl Tube, Molded	44-2100-3
14 Adapter, 1/2", Water Outlet	17-0602-1
15 Adapter, Water Inlet	† 87-0609-3
16 Bracket, Capacitor	600452-1
17 Bracket, Dump Valve	626031-4
18 Bracket, High Pressure Control	627701-4
19 Bracket, Relay Mounting	600492-1
20 Bracket, Terminal Block, 230V	600850-1
21 Bracket, Water Fittings	600762-1
22 Bushing, 1.187"	† 25-0001-9
23 Bushing, .625"	† 25-0016-9
24 Bushing, .625"	† 25-0218-9
25 Bushing, .875"	† 25-0140-9
26 Control Box	600732-1
27 Control Board Shield	600734-1
28 Control Box Cover (Not shown)	No Longer Available
29 Screw, #10-24 x 1/2"	† 52-0210-9
30 Screw, #10-24 x 1/2"	† 52-0206-9
31 Screw, #6 x 3/4"	† 51-2155-9
32 Screw, #8 x 3/4"	† 51-2166-9
33 Snap Ring	† 56-5070-9
34 Support	43-0225-3
35 Union (Plastic)	13-6096-1
36 Snap Ring	† 56-5060-9

* See Page 6 for 230/60 or 230/50 Applications

† Refer to Cross Reference Guide

B0150 EVAPORATOR



1342

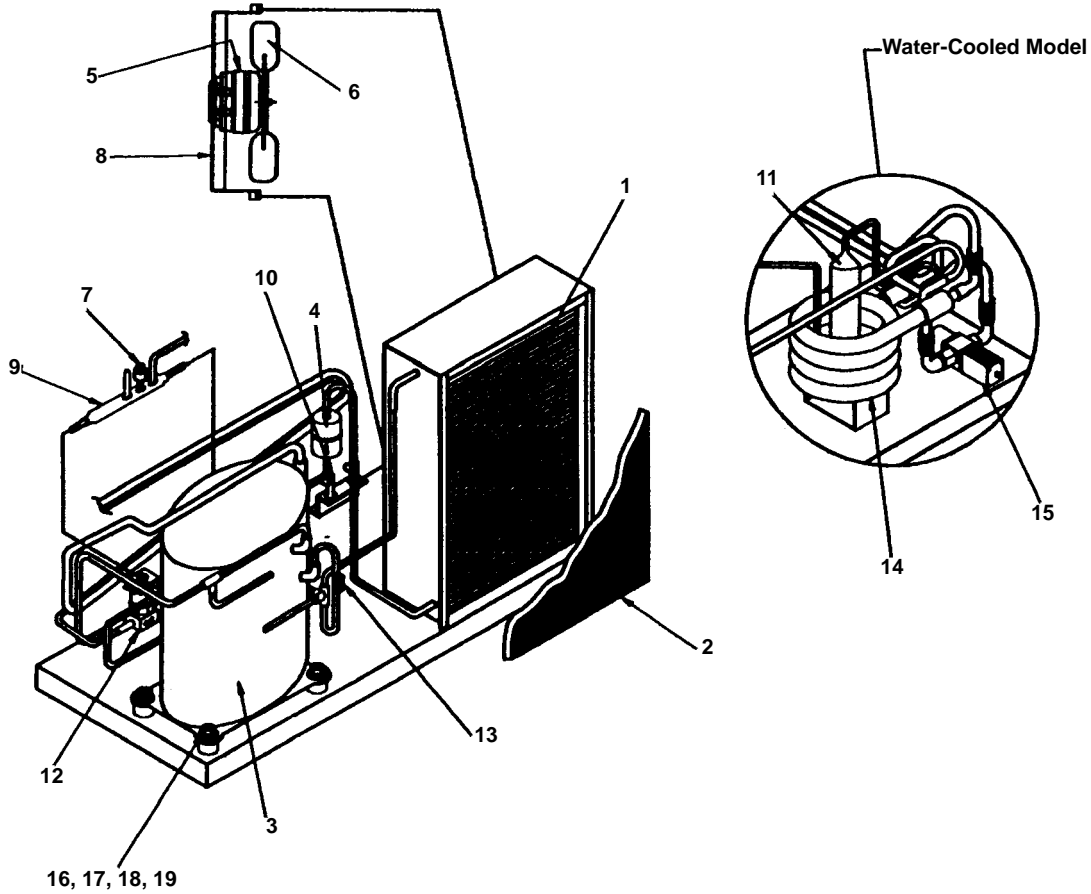
DESCRIPTION

	PART NO.
1 Distribution Tube Assembly	† 76-2498-3
2 Evaporator, Regular Cube	† 76-2587-9
3 Evaporator, Dice Cube	† 76-2586-9
3a Evaporator, Half Dice	† 76-2657-9
4 Float Valve Assembly	† 83-6904-9
5 Ice Thickness Control	† 76-2781-3
6 Magnetic Bin Switch	† 23-0148-3
7 Water Curtain	600751-1
7a Water Curtain Hanger	76-2776-3
7b Water Curtain Magnet And Clip	† 76-2802-3
8 Water Pump*	† 76-2306-3
9 Water Trough	† 76-2648-3
10 Water Inlet Tubing	44-2029-1
11 Vinyl Tube to Dump Valve	† 44-2038-3
12 Molded Discharge Tube	44-2104-3
13 Molded Reducer Elbow	† 44-2101-3
14 Barbed Tee	83-9103-3
15 Clip-Water Trough (Plastic)	44-0870-3
15a Bracket For Water Trough (Metal)	601107-1
16 Thumbscrew	† 50-0001-3
17 Bracket for Float Valve	000000136
18 Wing Nuts	† 54-8913-9
19 Channel, Pump Cord	600796-1
20 Shield, Liner	600797-1
21 Evaporator Gasket/Top Molding Assembly (Not shown)	76-2621-3

* See Page 6 for 230/60 or 230/50 Applications

† Refer to Cross Reference Guide

B0150 COMPRESSOR



1343

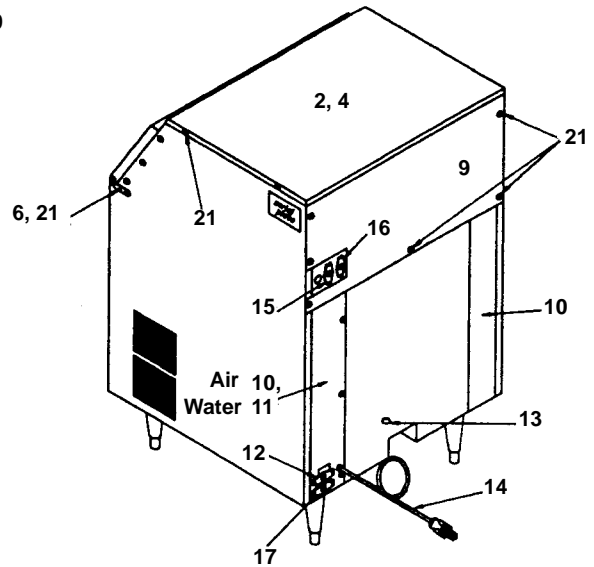
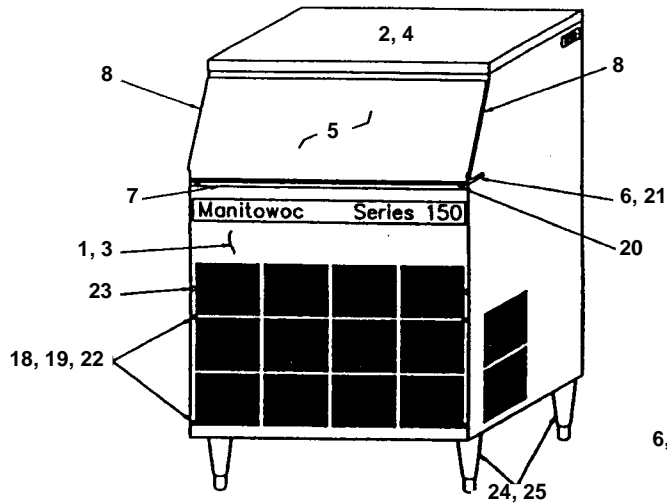
DESCRIPTION

	DESCRIPTION	PART NO.
1	Air Condenser.....	88-5094-3
2	Air EZK Filter.....	40-4009-3
3	Compressor, 115V*.....	† 76-2517-3
3a	Compressor Overload (Not shown).....	† 85-0479-3
4	Drier.....	† 89-3025-9
5	Fan Motor*.....	† 24-1287-3
6	Fan Blade.....	24-1624-3
7	Fan Cycling Control.....	† 20-0126-3
8	Fan Motor Bracket.....	600810-1
9	Manifold Strainer.....	83-1016-3
10	Process Valve.....	† 83-7310-9
11	Receiver.....	12-0003-1
12	Hot Gas Solenoid Valve* 115V 60 Hz (Danfoss).....	† 76-3000-1
13	Thermistor.....	23-5116-3
14	Water Condenser.....	† 88-6522-7
15	Water Regulating Valve.....	83-7210-3
16	Rubber Grommet.....	† 85-0306-9
17	Sleeve.....	† 85-0394-9
18	Flatwasher.....	† 55-7309-9
19	Hex Nut.....	† 54-3002-9

* See Page 6 for 230/60 or 230/50 Applications

† Refer to Cross Reference Guide

B0150 PANELS



1344

PART NO.

FAWN

1	Front Panel Assembly	76-2577-3
2	Top Cover	600106-1

STAINLESS STEEL

3	Front Panel Assembly	76-2576-3
4	Top Cover	600106-5

COMMON

5	Bin Door	† 76-2445-3
6	Hinge Set for Bin Door	† 76-2441-3
7	Door Opening Trim	665911-4
8	Trim, Liner Sides	No Longer Available
9	Panel, Top Back	600763-1
10	Cover, Channel	600761-1
11	Cover, Channel, Water-cooled Units	600764-1
12	Cover, Water Fittings	600822-1
13	Bin Drain Seal	76-2322-3
14	Power Cord	20-3067-3
15	Water Inlet Adapter	† 87-0609-3
16	Water Outlet Adapter	17-0602-1
17	Water Condenser Adapter	87-0610-3
18	Screw, #8-32 x 1/2" Phil.	† 50-2624-9
19	Cage Nut for Front Panel Screw	† 54-2910-9
20	Screw, #8-15 x .50	† 51-2164-9
21	Screw, #10-24 x 1/2"	† 52-0206-9
22	Washer, Flat Nylon	† 55-7338-9
23	Bumpon, Black	† 43-0004-9
24	Legs - for Fawn Machine	33-0249-4
25	Legs - for Stainless Machine	33-0251-3

† Refer to Cross Reference Guide

B0150 ELECTRICAL APPLICATIONS

All parts are the same as 115V Model with the following exceptions:

230V/50 Hz	PART NO.
Compressor	† 76-2541-3
Start Capacitor	85-0372-3
Start Relay	85-0376-3
Overload	85-0470-3
Fuse for Control Board, 7 Amp	25-1100-3
Mini-fuse for Control Board, .1 Amp	25-1105-3
Fan Motor	† 24-1288-3
Water Pump	† 76-2601-3
Dump Valve, 208/230V	000001768
Terminal Block	76-2878-3
Contactors	† 20-0659-9
Hot Gas Solenoid Valve 208/230V 50/60 Hz (Danfoss)	† 76-3006-1

230V/60 Hz	PART NO.
Compressor	† 76-2590-3
Start Capacitor	85-0372-3
Start Relay	85-0375-3
Overload	85-0469-3
Fan Motor	† 24-1288-3
Fuse for Control Board, 7 Amp	25-1100-3
Mini-fuse for Control Board, .125 Amp	25-1116-3
Water Pump	† 76-2601-3
Dump Valve, 208/230V	000001768
Contactors	† 20-0659-9
Hot Gas Solenoid Valve 208/230V 50/60 Hz (Danfoss)	† 76-3006-1

† Refer to Cross Reference Guide