



Ice Machine Parts List for Series B0450 Models

BR0450A

BD0492N

BR0451W

BY0454A

BR0490N

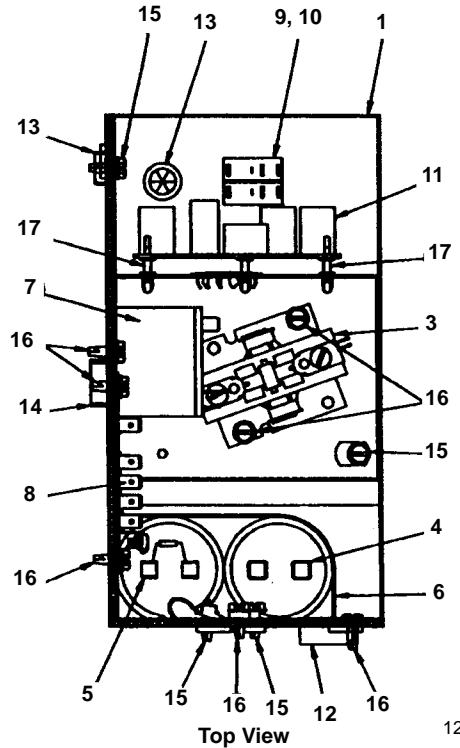
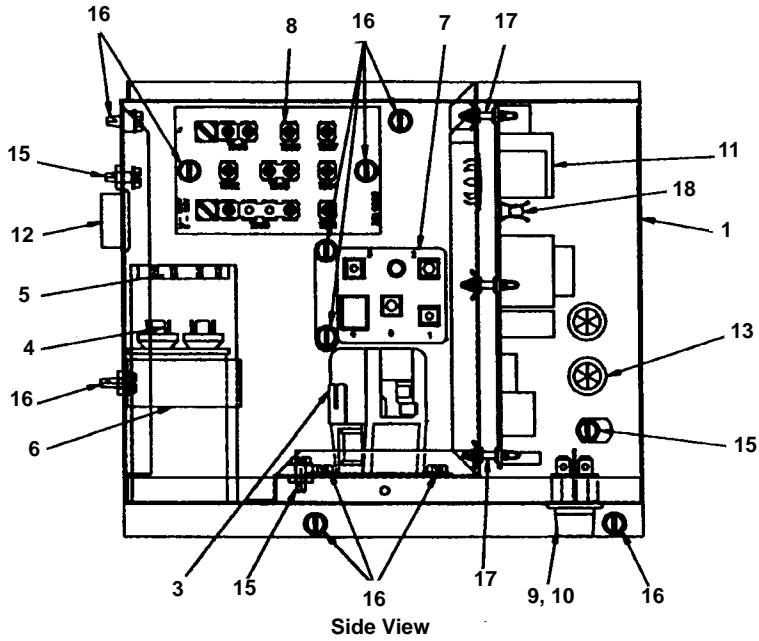
BY0455W

BD0452A

BY0494N

BD0453W

B0450 CONTROL BOX



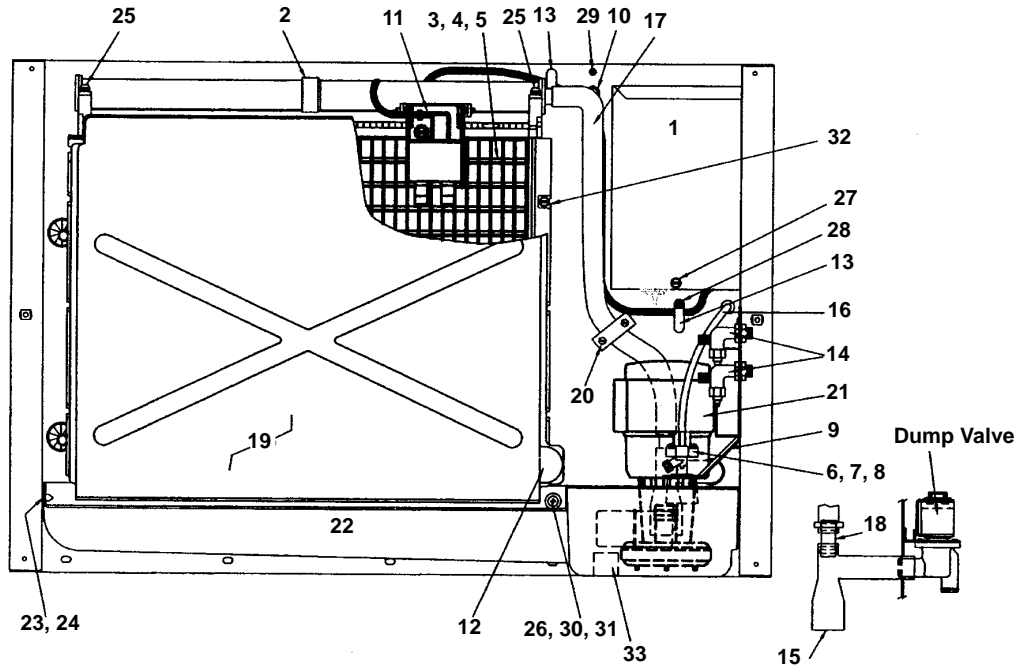
1281

DESCRIPTION

DESCRIPTION	PART NO.
1 Control Box	† 601284-1
2 Control Box Cover w/Labels	† 76-2507-3
3 Contactor for 1 Phase Unit	† 20-0658-9
4 Run Capacitor	† 85-0342-3
5 Start Capacitor	85-0372-3
6 Capacitor Bracket	600452-1
7 Start Relay	20-0799-3
8 Terminal Board w/Harness	20-3100-3
9 Toggle Switch Only	23-0134-3
10 Toggle Switch With Wiring Harness	† 20-3105-9
11 Control Board (For use with all voltages)	† 76-2800-3
12 Bushing - 1.187"	† 25-0001-9
13 Bushing - .625"	† 25-0016-9
14 Bushing - .875"	† 25-0140-9
15 Screw, #10-24 x .50 Ground	† 52-0216-9
16 Screw, #10-24 x .50 Hex Head	† 52-0206-9
17 Support For Control Board	43-0225-3
18 Fuse, 7 Amp	25-1100-3
19 Mini-fuse, .125 Amp	† 25-1116-9

† Refer to Cross Reference Guide

B0450 EVAPORATOR COMPARTMENT



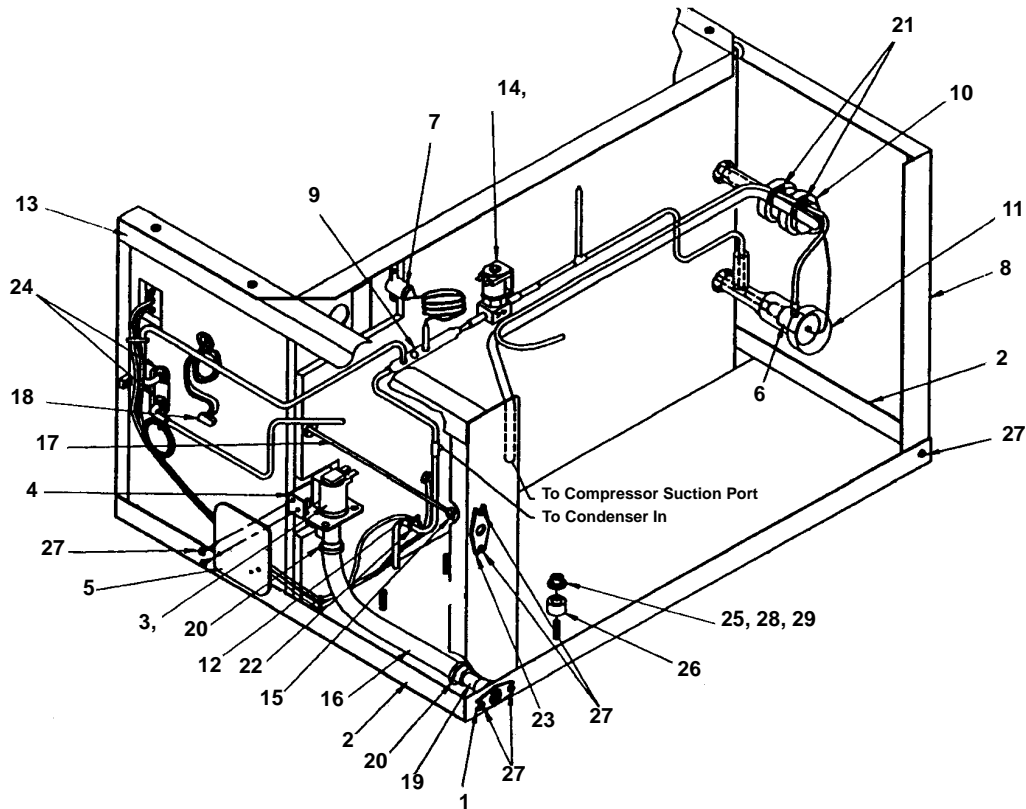
1282

DESCRIPTION

	PART NO.
1 Control Box Cover	† 76-2507-3
2 Distribution Tube Assembly	† 76-2498-3
3 Evaporator Assembly, Dice Cube	† 76-2514-9
4 Evaporator Assembly, Half Dice Cube	† 76-2513-9
5 Evaporator Assembly, Regular Cube	† 76-2515-9
6 Float Valve Complete Assembly	† 83-6904-9
7 Float Valve Screen	† 83-6906-9
8 Float Valve Plunger	† 83-6908-9
9 Float Valve Mounting Bracket	† 76-2140-3
10 High Pressure Cut-out	23-5536-3
11 Ice Thickness Control	† 76-2781-3
12 Magnetic Switch With Housing	† 23-0148-3
13 Nylon Spring Clip	† 56-5069-9
14 Process Valve With Stem	† 83-7310-9
15 Reducing Tee, Rubber	43-0057-3
16 Tubing, Vinyl .25 OD	44-2029-1
17 Tubing, Vinyl .625 ID With Elbow	44-2083-3
18 Union Connector, White Nylon	83-9005-3
19 Water Curtain Assembly	† 43-0464-3
a. Water Curtain Hanger	76-2776-3
b. Water Curtain Magnet and Clip	† 76-2802-3
20 Water Flow Clamp (Regular cube only)	76-2054-3
21 Water Pump, 115V 60 Hz	† 76-2306-3
22 Water Trough	† 76-2748-3
23 Water Trough Support Pin	† 43-0201-9
24 Hex Nut, Nylon	† 54-2945-9
25 Screw, Nylon, Thumb #8-32 x .63	† 50-0001-3
26 Screw, Push-in Used Up to SN 930662504	† 50-1227-9
27 Screw, #10-24 x .50	† 52-0206-9
28 Screw, #10-24 x .625	† 52-0205-9
29 Screw, #8 x .75	† 51-2166-9
30 Clip in Receptacle Used After SN 930662504	56-5085-3
31 Wing Head Stud Used After SN 930662504	56-5086-3
32 Screw to Mount Evaporator	† 52-0218-9
33 Water Trough Support Clip Assembly	† 76-2704-3
34 Evaporator Gasket/Top Molding Assembly (Not shown)	76-2621-3

† Refer to Cross Reference Guide

B0450 COMMON PARTS



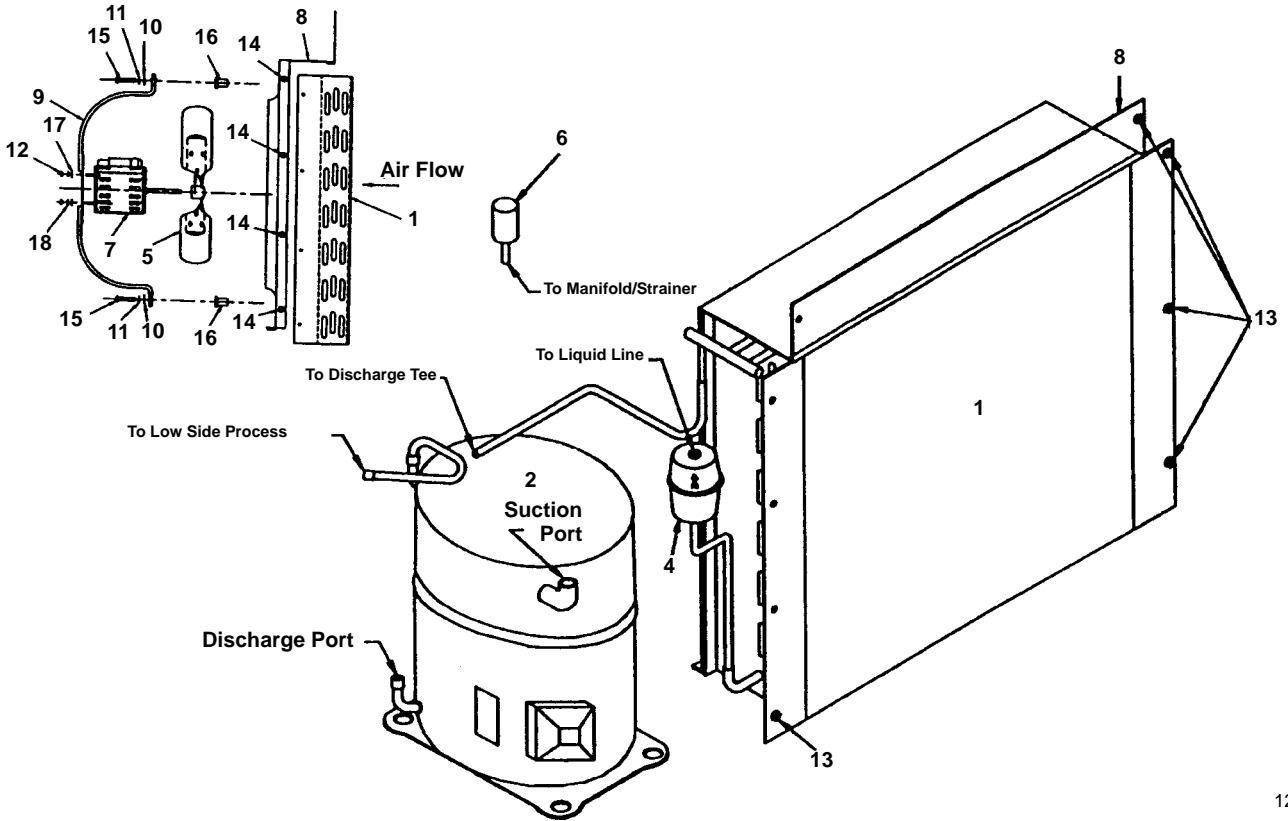
1283

DESCRIPTION

DESCRIPTION	PART NO.
1 Adapter, Water Outlet	17-0602-1
2 Angle	† 601287-1
3 Dump Valve, 115V	000001767
4 Dump Valve Mounting Bracket	626031-4
5 Dump Valve Shield (Air only)	† 70-0062-3
6 Expansion Valve	† 76-2508-3
7 High Pressure Cut-out	† 23-5536-9
8 LH Corner Post Weldment	600084-1
9 Manifold Strainer	83-1016-3
10 Neoprene Bulb Boot	40-0720-3
11 Neoprene TXV Boot	40-0721-3
12 NTC Thermistor	23-5116-3
13 RH Corner Post Weldment	600084-2
14 Solenoid Valve 115V 60 Hz (Danfoss)	† 76-3001-1
15 Union, Water Inlet	13-6096-1
16 Vinyl Tube, .625 ID	† 44-2038-3
17 Vinyl Tube, .25 OD	44-2029-1
18 Water Pump Lead	† 20-7810-3
19 Tube, Copper Drain	11048-1
20 Clamp, Plastic Drain	† 56-5070-9
21 Clamp, Worm Drive Hex Head	† 56-5052-9
22 Clamp, Worm Gear	56-5077-3
23 Female Wing Adapter	† 87-0609-3
24 Nut, Hex Locknut	† 54-7503-9
25 Nut Hex .375	† 54-3002-9
26 Rubber Grommet	† 85-0306-9
27 Screw, #10-24 x .05	† 52-0206-9
28 Sleeve	† 85-0394-9
29 Washer, Flat .312	† 55-7309-9
30 Danfoss Coil Only	000002048
30 Alco Coil Only	24-0436-3

† Refer to Cross Reference Guide

B0450 AIR-COOLED



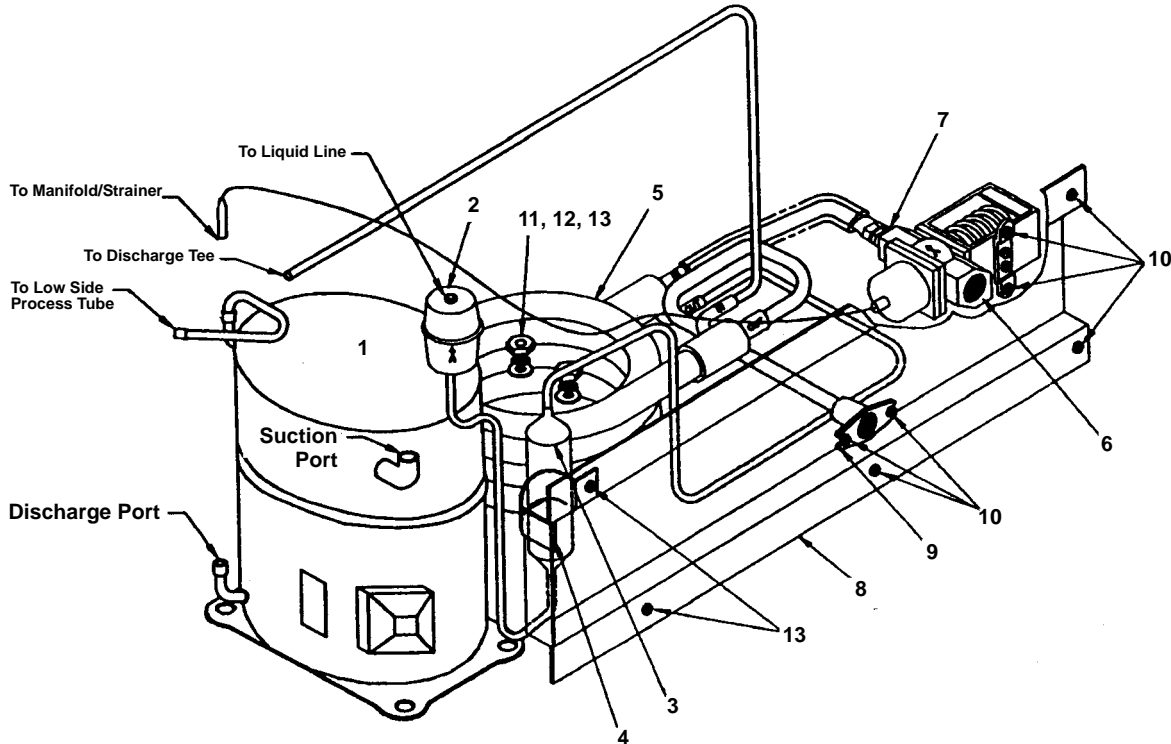
1284

DESCRIPTION

		PART NO.
1	Air Condenser	88-5061-3
2	Compressor Assembly, 115V/60 Hz.	† 76-2810-3
	a. Overload Protector for Tecumseh AK9458J	85-0429-3
	b. Overload Protector for Tecumseh AK170AT-039-A4D	85-0555-3
3	Capacitor for Fan Motor (Emerson)	85-0458-3
4	Drier	† 89-3025-9
5	Fan Blade	24-1620-3
6	Fan Cycling Control	† 20-0126-3
7	Fan Motor	† 24-1292-9
8	Fan Shroud	600334-1
9	Wire Motor Mount	34-0662-3
10	Flatwasher .25	† 55-7305-9
11	Lockwasher .25 Split	† 55-4510-9
12	Nut .25-20	† 54-2906-9
13	Screw, #10-24 x .50	† 52-0206-9
14	Screw, #10-24 x .625	† 52-0205-9
15	Screw, 1/4 x 1.75	† 50-3358-9
16	Well Nut .25-20	† 54-2955-9
17	Flatwasher	† 55-0426-9
18	Lockwasher #8	† 55-4459-9
19	Air Filter (Not shown)	40-4002-3
20	Air Filter Bracket (Not shown)	† 76-2686-3

† Refer to Cross Reference Guide

B0450 WATER-COOLED



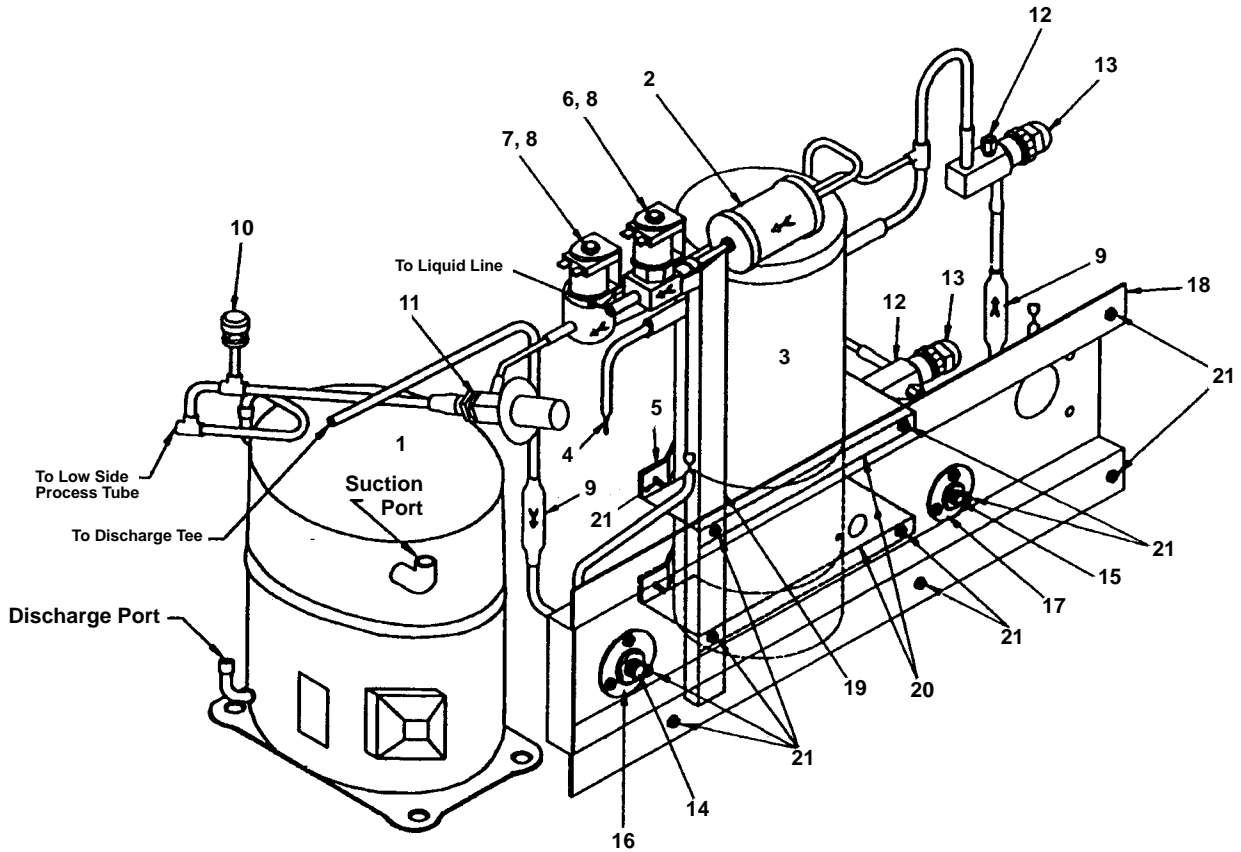
1285

DESCRIPTION

	DESCRIPTION	PART NO.
1	Compressor, 115V/60 Hz	† 76-2810-3
	a. Overload Protector for Tecumseh AK9458J	85-0429-3
	b. Overload Protector for Tecumseh AK170AT-039-A4D	85-0555-3
2	Drier	† 89-3025-9
3	Receiver	12-0003-1
4	Receiver Strap	600054-1
5	Water Condenser	† 88-6532-3
6	Water Regulating Valve	† 83-7206-9
7	Coupling	83-3203-3
8	Coupling Mounting Bracket.	600057-1
9	Female Wing Adapter	87-0612-3
10	Screw, #10-24 x .50	† 52-0206-9
11	Flatwasher .312	† 55-7309-9
12	Lockwasher .38 Split.	† 55-4514-9
13	Nut - .375 Hex.	† 54-3002-9

† Refer to Cross Reference Guide

B0450 REMOTE



1286

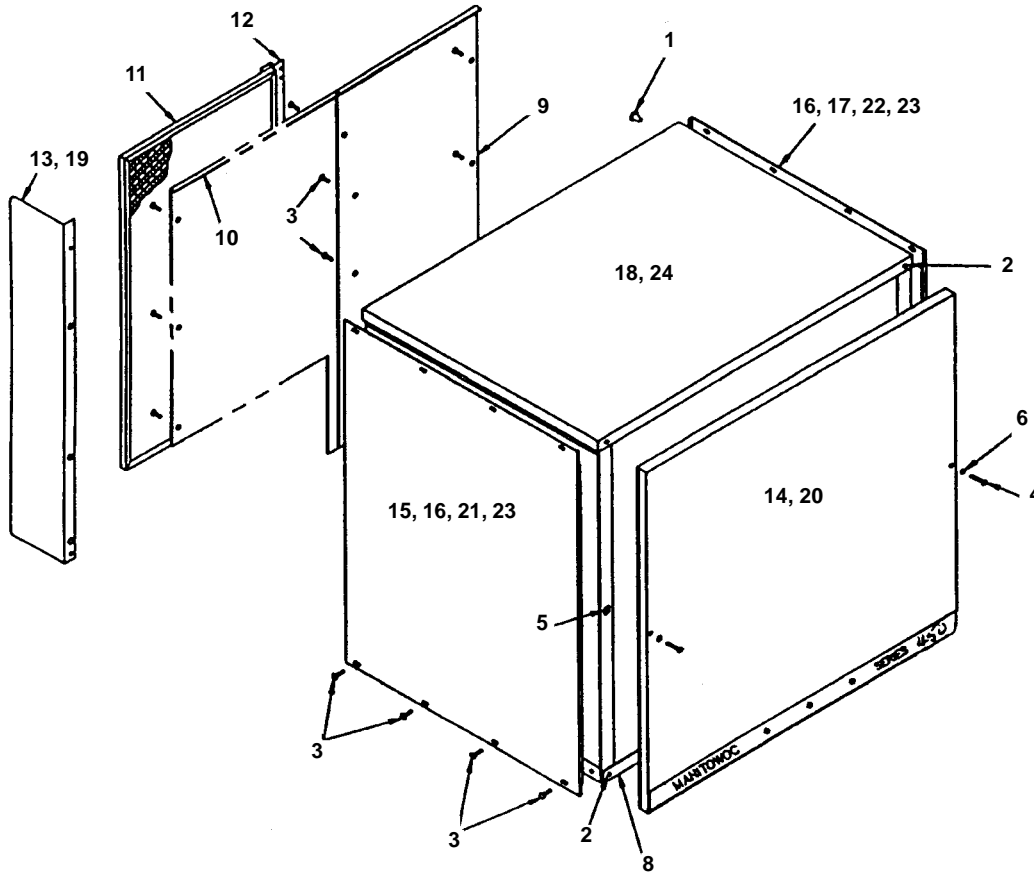
DESCRIPTION

	PART NO.
1 Compressor, 115V/60 Hz	† 76-2810-3
a. Overload Protector for Tecumseh AK9458J	85-0429-3
b. Overload Protector for Tecumseh AK170AT-039-A4D	85-0555-3
2 Drier	† 89-3027-9
3 Receiver	89-0044-3
4 Safety Soft Plug	† 628451-9
5 Receiver Mounting Strap	630721-4
6 Solenoid Valve 115V 60 Hz (Danfoss)	† 76-3002-1
7 Solenoid Valve, HPR 115V 60 Hz (Danfoss)	† 76-3000-1
8 Danfoss Coil Only	000002048
8 Alco Coil Only	24-0436-3
9 Magni-Check Valve	† 83-7314-9
10 Low Pressure Cut-out	† 23-5540-9
11 Pressure Regulator Valve	† 83-6779-3
12 Brass Angle Valve	† 83-7316-9
13 Brass Angle Valve, Cap Only	56-5075-3
14 Coupling - Male 1- 1/6-12.	† 83-6035-3
15 Coupling - Male 5/8-18.	† 83-6034-3
16 Mounting Flange	83-6006-3
17 Mounting Flange	83-6005-3
18 Panel, Coupling Mounting	600057-1
19 Bracket Weldment	600055-1
20 Mounting Bracket for Receiver.	600056-1
21 Screw, #10-24 x .50	† 52-0206-9

Female Coupling Kit (On line set) (Not shown) SALES K0129

† Refer to Cross Reference Guide

B0450 PANELS



1287

COMMON

	PART NO.
1 Canoe Clip Fastener	† 56-4820-9
2 Screw, #10-24 x .50 Flat	† 52-0209-9
3 Screw, #10-24 x .50 Hex	† 52-0206-9
4 Screw, #8-32 x 1.25	† 50-2668-9
5 Cage Nut 8-12	† 54-2910-9
6 "0" Ring	† 37-1819-9
7 Extruded Tape (Not shown)	† 92-0250-9
8 Front Support	† 658041-9
9 Back Panel, Air	600318-1
10 Back Panel, Remote & Water	600045-1
11 Air Filter	40-4002-3
12 Filter Bracket	† 76-2686-3

FAWN

13 Air Baffle	600220-1
14 Front Panel Assembly	† 76-2525-3
15 LH Side Panel, Air	600052-1
16 RH Side Panel, Air	600053-1
17 Side Panel, Water or Remote	600060-1
18 Top Cover	600068-1

STAINLESS STEEL

19 Air Baffle	600220-3
20 Front Panel Assembly	† 76-2526-3
21 LH Side Panel, Air	600052-3
22 RH Side Panel, Air	600053-3
23 Side Panel, Water or Remote	600060-3
24 Top Cover	600068-3

† Refer to Cross Reference Guide

B0450 ELECTRICAL APPLICATIONS

All parts are the same as 115V Model with the following exceptions:

230V/50/1

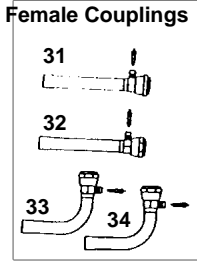
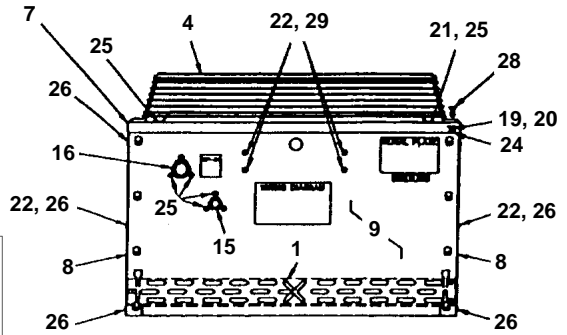
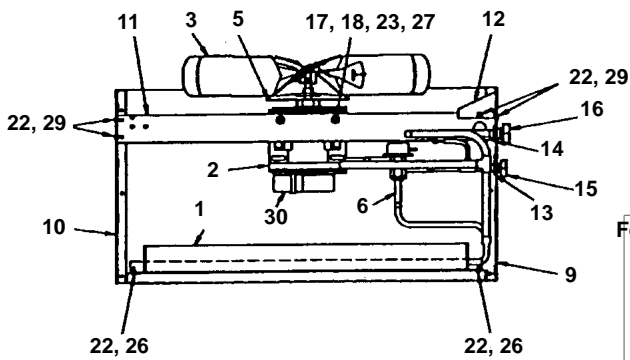
	PART NO.
Compressor 208/230/1	† 76-2811-3
Overload Protector for Tecumseh AK9458J.	85-0430-3
Overload Protector for Tecumseh AK170JT-039-A4D.	85-0557-3
Start Capacitor	85-0372-3
Start Relay	85-0448-3
Run Capacitor	85-0400-3
Water Pump	† 76-2601-3
Contactors	† 20-0659-9
Fan Motor.	† 24-1293-9
Dump Valve, 208/230V	000001768
Hot Gas Solenoid Valve Assembly 208/230V 50/60 Hz (Danfoss)	† 76-3007-1
.1 Amp Mini-fuse On Control Board.	25-1105-3
7 Amp Fuse On Control Board.	25-1100-3

208V-230V/60/1

Compressor	† 76-2812-3
Overload Protector for Tecumseh AK9458J.	85-0431-3
Overload Protector for Tecumseh AK170ET-039-A4D.	85-0556-3
Start Relay	85-0455-3
Run Capacitor	85-0400-3
Start Capacitor	85-0372-3
Water Pump Assembly	† 76-2601-3
Hot Gas Solenoid Valve Assembly 208/230V 50/60 Hz (Danfoss)	† 76-3007-1
Dump Valve, 208/230V	000001768
Fan Motor.	† 24-1293-9
Contactors	† 20-0659-9
.1 Amp Mini-fuse On Control Board.	25-1105-3
7 Amp Fuse On Control Board.	25-1100-3

† Refer to Cross Reference Guide

BC0495 REMOTE CONDENSER



1289

DESCRIPTION

	PART NO.
1 Air Condenser.....	88-5063-3
2 Fan Motor, 115V 60 Hz.....	† 76-2942-3
3 Fan Blade.....	24-1611-3
4 Fan Guard.....	34-0064-3
5 Rain Slinger.....	24-1505-3
6 Head Pressure Control.....	83-6809-3
7 Top Cover.....	† 601775-1
8 Panel, Side.....	† 601774-1
9 Panel, Rear.....	† 601773-1
10 Panel, Front.....	† 601772-1
11 Base Bracket.....	† 601768-1
12 Electrical Cover.....	† 601776-1
13 Mounting Flange .25 x .38.....	83-6005-3
14 Mounting Flange .50 x .88.....	83-6006-3
15 Coupling, Male .63-18.....	† 83-6034-3
16 Coupling, Male 1.06-12.....	† 83-6035-3
17 Lockwasher .31 Split.....	† 55-7313-9
18 Washer - Flat .31 ID.....	† 55-7309-9
19 Washer - Flat .25 Stainless.....	† 55-7304-9
20 Lockwasher .25 Split Stainless.....	† 55-4511-9
21 Lockwasher #10 Int. Phos.....	† 55-4464-9
22 Lockwasher #8 Int. Phos.....	† 55-4459-9
23 Nut .31-18 Steel Hex.....	† 54-2975-9
24 Nut .25-20 Steel Hex.....	† 54-2952-9
25 Screw, #10-24 x .62.....	† 52-0205-9
26 Screw, #8 x .5.....	† 51-2153-9
27 Screw, .31-18 x .62.....	† 50-3565-9
28 Screw, .25-2 x .62.....	† 50-3345-9
29 Screw, #8-32 x .50.....	† 50-2624-9
30 Fan Capacitor.....	No Longer Available
31 Female Coupling, Straight, 5/8 x 18.....	83-6048-3
32 Female Coupling, Straight, 1-1/16 x 12.....	83-6027-3
33 Female Coupling, 90°, 5/8 x 18.....	83-6047-3
34 Female Coupling, 90°, 1-1/16 x 12.....	† 83-6026-3

† Refer to Cross Reference Guide