



Ice Machine Parts List for Series B1300 Models

BR1300A

BD1392N

BR1301W

BY1304A

BR1390N

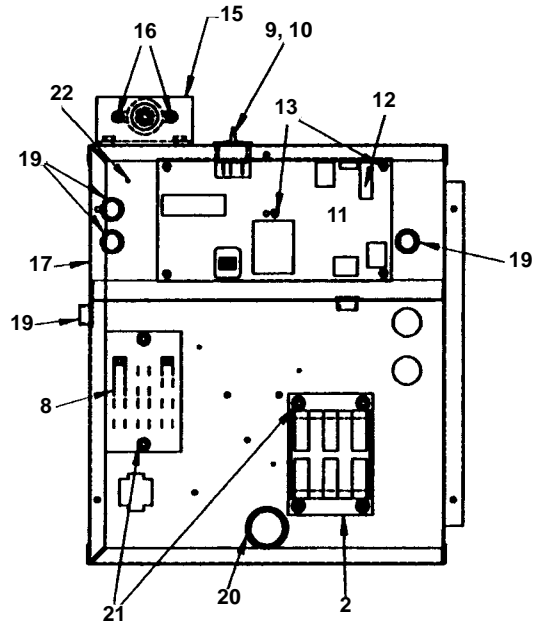
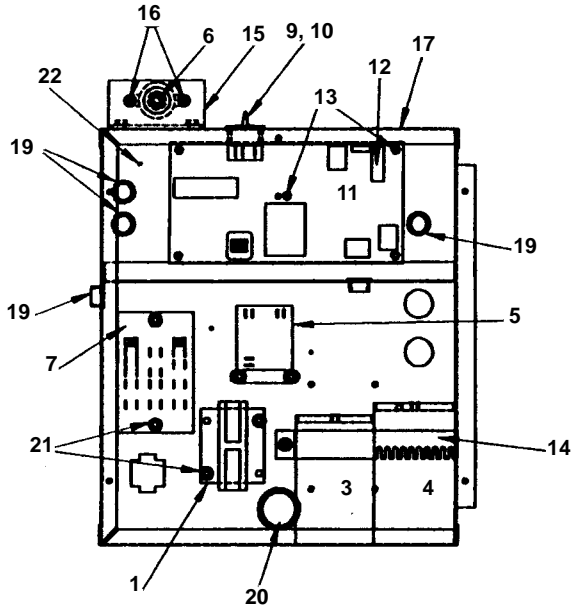
BY1305W

BD1302A

BY1394N

BD1303W

B1300 CONTROL BOX



1321

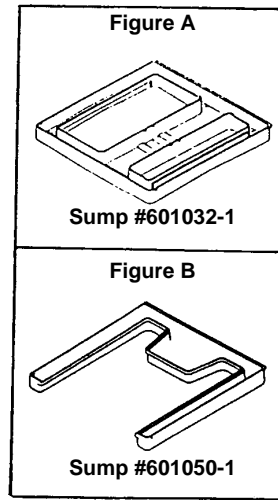
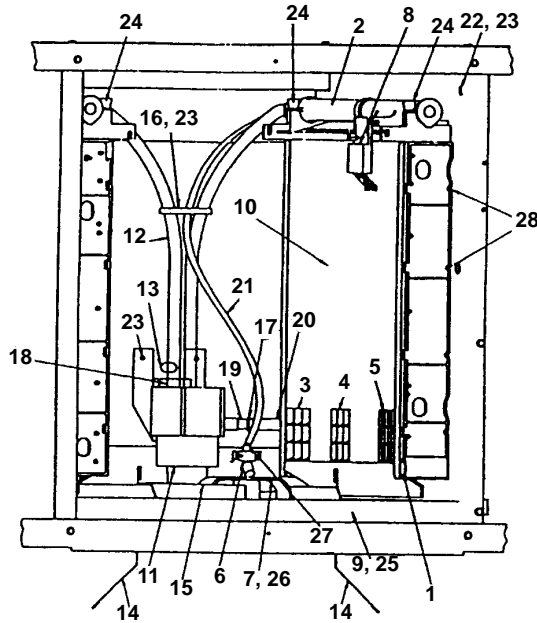
DESCRIPTION

DESCRIPTION	PART NO.
1 Contactor for 1 Phase Units	24-1030-3
2 Contactor for 3 Phase Units	† 20-0116-3
3 Run Capacitor For Bristol	† 20-1013-3
3 Run Capacitor For Tecumseh	000001395
4 Start Capacitor For Bristol	† 85-0385-3
4 Start Capacitor For Tecumseh	85-0551-3
5 Start Relay For Bristol	85-0379-3
5 Start Relay For Tecumseh	20-0751-9
6 High Pressure Control	† 23-5536-9
7 Terminal Board With Harness, 1 Ph	20-3140-3
8 Terminal Board With Harness, 3 Ph	20-3141-3
9 Toggle Switch	23-0134-3
10 Toggle Switch With Wiring Harness	† 20-3105-9
11 Control Board (For use with all voltages)	† 76-2800-3
12 Fuse for Control Board 7 Amp	25-1100-3
a. Mini-fuse for Control Board .125 Amp*	† 25-1116-9
13 Support for Control Board	43-0225-3
14 Capacitor Bracket	600452-1
15 Mounting Bracket for High Pressure Control	627701-4
16 Screw #8 x 3/4	† 51-2166-9
17 Control Box	600582-1
18 Control Box Cover With Labels	† 76-2567-3
19 Bushing .625"	† 25-0218-9
20 Bushing 1.187"	† 25-0001-9
21 Screw, #10-24 x .50	† 52-0206-9
22 Screw, #10-24 x .50	† 52-0216-9

* See Page 9 for 50 Hz Applications

† Refer to Cross Reference Guide

B1300 EVAPORATOR COMPARTMENT



1322

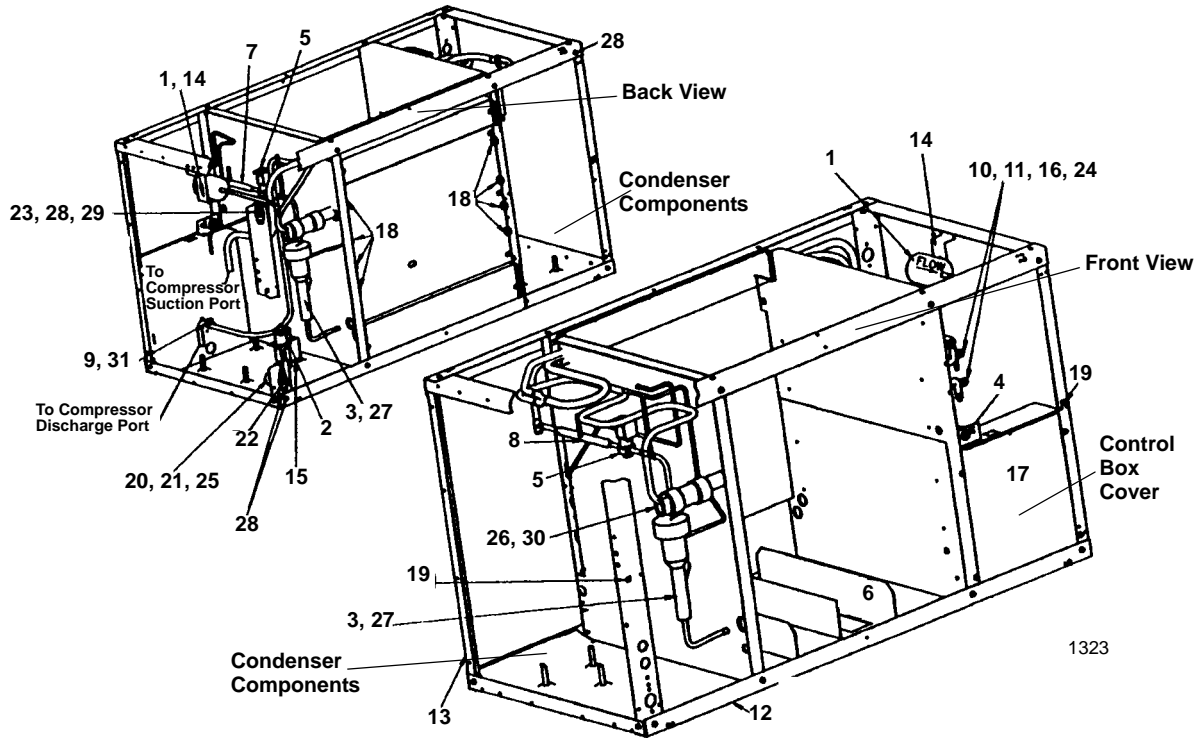
DESCRIPTION

	PART NO.
1 Bin Switch, 96" Lead	† 23-0148-3
2 Distribution Tube	† 76-2498-3
3 Evaporator, Regular Cube, RH or LH.	† 76-2473-9
4 Evaporator, Dice Cube, RH or LH	† 76-2472-9
5 Evaporator, Half Dice Cube, RH or LH.	† 76-2471-9
6 Float Valve	83-6913-3
7 Float Valve Bracket Used With Figure A Sump Trough	43-0250-3
a. Float Valve Bracket Used With Figure B Sump Trough	† 76-2140-3
8 Ice Thickness Control.	† 76-2781-3
9 Sump Trough (Up to SN 950460000, See Figure A)	† 601032-1
a. Sump Trough (After SN 950460000, See Figure B)	601050-1
10 Water Curtain	40-0851-3
a. Water Curtain Hanger	76-2776-3
b. Water Curtain Magnet And Clip	† 76-2802-3
11 Water Pump*	† 76-2601-3
12 Water Pump Discharge Tube	44-2091-3
13 Water Pump Lead	20-7774-3
14 Ice Baffle	600654-1
15 Ice Baffle Support Used With Figure A Sump Trough	600588-1
a. Ice Baffle Support Used With Figure B Sump Trough.	† 000000103
16 Loop Clamp 2.00" Diameter.	No Longer Available
17 Clamp.	† 56-5070-9
18 Hose Clamp	† 56-5053-9
19 Union Connector, White Nylon, Straight.	83-9005-3
a. Union Connector, 90°	83-9012-3
20 Vinyl Tube, .625 ID.	† 44-2038-3
21 Poly Tubing 1/4" OD	44-2029-1
22 Nylon Spring Clip	56-5069-3
23 Screw, #10-24 x .50	† 52-0206-9
24 Thumbscrew, #8-32	† 50-0001-3
25 Push-in Screw (Mounting Sump Trough)	† 50-1227-9
26 Shield, Mylar Splash for Float	600922-1
27 Compression Nut	† 56-5072-9
28 Screw for Mounting Evaporator	† 52-0218-9
29 Water Curtain Stop	601167-1
30 Splash Shield	† 76-2679-3
31 Evaporator Gasket/Top Molding Assembly (Not shown)	76-2621-3

* See Page 9 for 50 Hz Applications

† Refer to Cross Reference Guide

B1300 COMMON COMPRESSOR COMPARTMENT PARTS

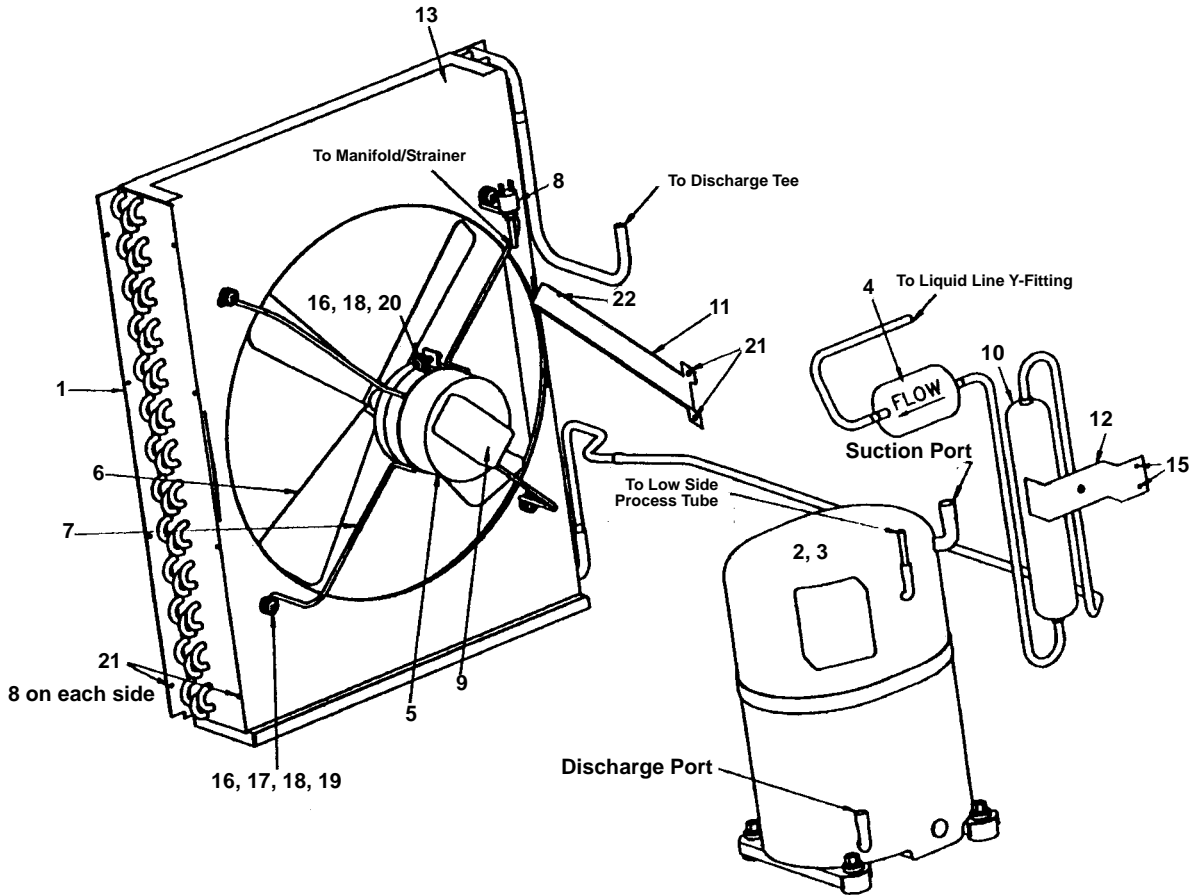


DESCRIPTION

DESCRIPTION	PART NO.
1 Drier	† 89-3027-9
2 Dump Valve, 208/230V	000001768
3 Expansion Valve	† 76-2566-3
4 High Pressure Cut-out	† 23-5536-9
5 Hot Gas Solenoid Valve 208/230V 50/60 Hz (Danfoss)	† 76-3010-1
6 Ice Baffle Support Used With 601032-1	600588-1
a. Ice Baffle Support Used With 601050-1	† 000000103
7 Manifold Strainer (Compressor Side)	No Longer Available
8 Manifold Strainer (Condenser Side)	83-1020-3
9 NTC Thermistor	23-5116-3
10 Process Valve	† 83-7310-9
11 Stem Assembly	No Longer Available
12 Angle, Top & Bottom, Fawn	† 601389-1
13 Cornerpost Weldment	600576-1
14 Bracket, Drier	600578-1
15 Bracket, Dump Valve	600566-1
16 Bracket, Service Valve	600166-1
17 Control Box Cover	† 76-2567-3
18 Bushing .875	† 25-0140-9
19 Cagenut 8-32	† 54-2910-9
20 Clamp	† 56-5070-9
21 Copper Elbow 5/8 x 5/8	83-0523-3
22 Drain Adapter 1/2	17-0602-1
23 Water Inlet Adapter	† 87-0609-3
24 Hex Lock Nut	† 54-7503-9
25 Molded Vinyl White Tube	44-2081-3
26 Neoprene Bulb Boot	40-0720-3
27 Neoprene TXV Boot	40-0721-3
28 Screw, #10-24 x .50	† 52-0206-9
29 Union	13-6096-1
30 Worm Drive Clamp	† 56-5052-9
31 Worm Drive Clamp	56-5084-3

† Refer to Cross Reference Guide

B1300 AIR-COOLED



1324

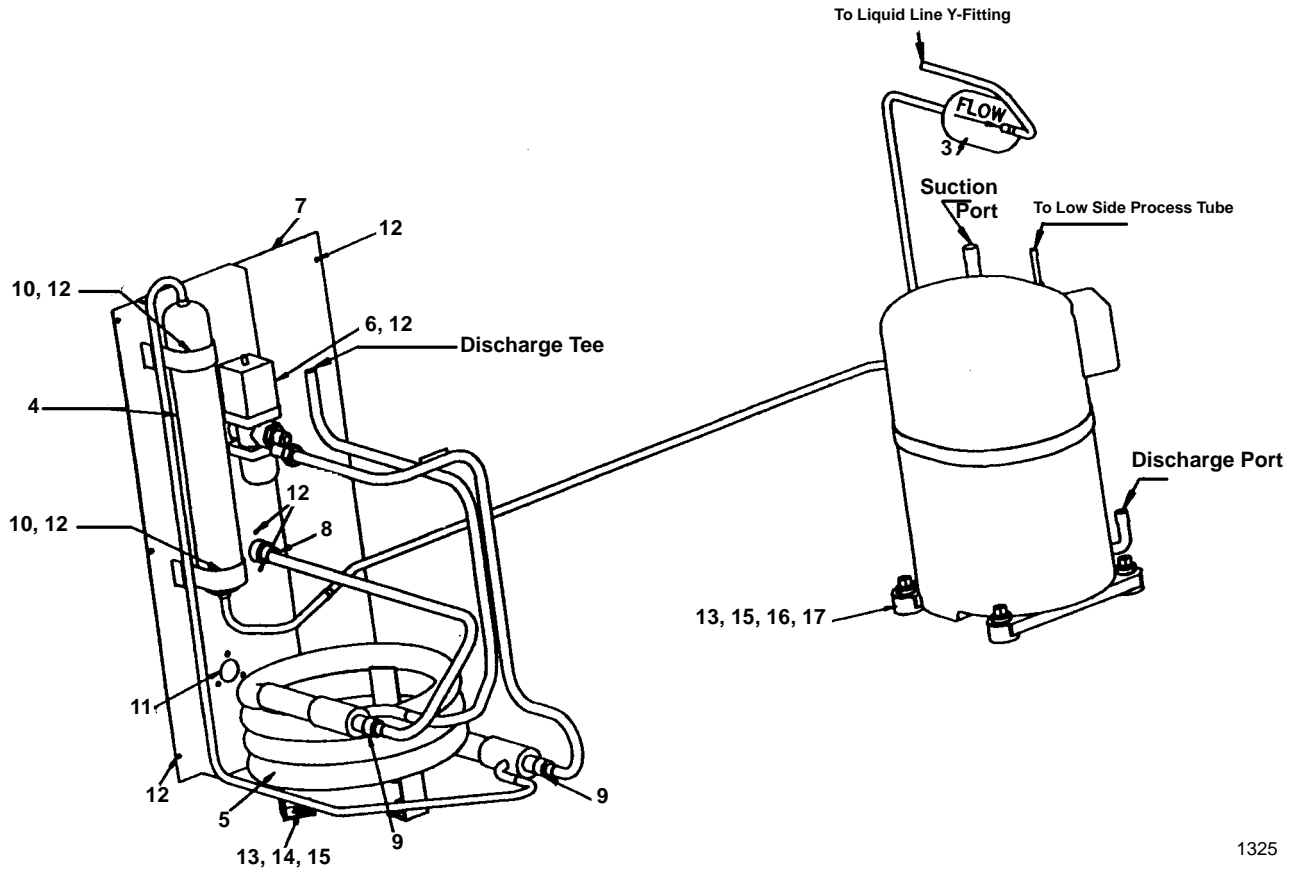
DESCRIPTION

	PART NO.
1 Air Condenser	88-5082-3
2 Compressor Assembly, 230/60/1*	† 76-0328-3
3 Compressor Assembly, 3 Phase*	† 76-0329-3
4 Drier	† 89-3027-9
5 Fan Motor 230V, 50/60 Hz	† 76-2673-3
6 Fan Blade	24-1611-3
7 Fan Motor Mount	30-0682-3
8 Fan Cycling Control	† 20-0126-3
9 Capacitor for Fan Motor	85-0458-3
10 Receiver	89-0013-3
11 Channel, Wire Cover	600587-1
12 Bracket	600578-1
13 Fan Shroud	600583-1
14 Air Filter (Not shown)	40-4007-3
15 Screw, #10-24 x .50	† 52-0209-9
16 Screw, .25-20 x 1.25	† 50-3358-9
17 Well-nut .25-20	† 54-2955-9
18 Lockwasher .25 Split	† 55-4510-9
19 Flatwasher	† 55-7305-9
20 Hex Nut	† 54-2952-9
21 Screw, #10-24 x .50	† 52-0206-9
22 Screw, #10-24 x .50*	56-0216-9

* See Page 9 for 50 Hz Applications

† Refer to Cross Reference Guide

B1300 WATER-COOLED



1325

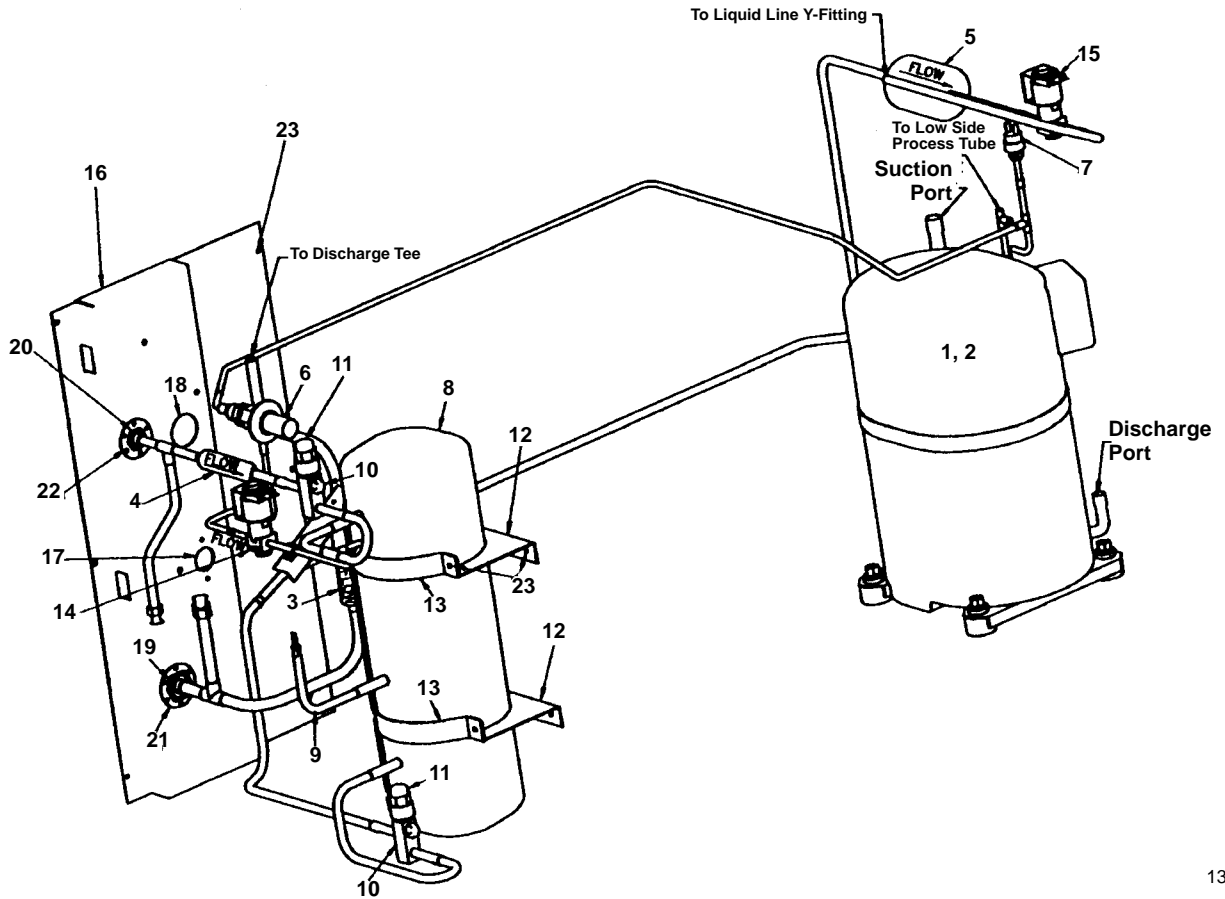
DESCRIPTION

	PART NO.
1 Compressor, 230/60/1*	† 76-0328-3
2 Compressor, 3 Phase*	† 76-0329-3
3 Drier	† 89-3027-9
4 Receiver	89-0035-3
5 Water-cooled Condenser	† 000001508
6 Water Regulating Valve	83-7212-3
7 Panel - Remote & Water Couplings	600579-1
8 Female Wing Adapter - Condenser Drain.	87-0612-3
9 Reducing Coupling .75 x .50.	83-0068-3
10 Receiver Strap	600054-1
11 Hole Plug 1-1/16"	43-0192-3
12 Screw, # 10-24 x .50.	† 52-0206-9
13 Hex Nut .38-16	† 54-3002-9
14 Lockwasher .38.	† 55-4514-9
15 Flatwasher .31	† 55-7309-9
16 Mounting Grommet.	† 85-0306-9
17 Sleeve	† 85-0394-9

* See Page 9 for 50 Hz Applications

† Refer to Cross Reference Guide

B1300 REMOTE



1326

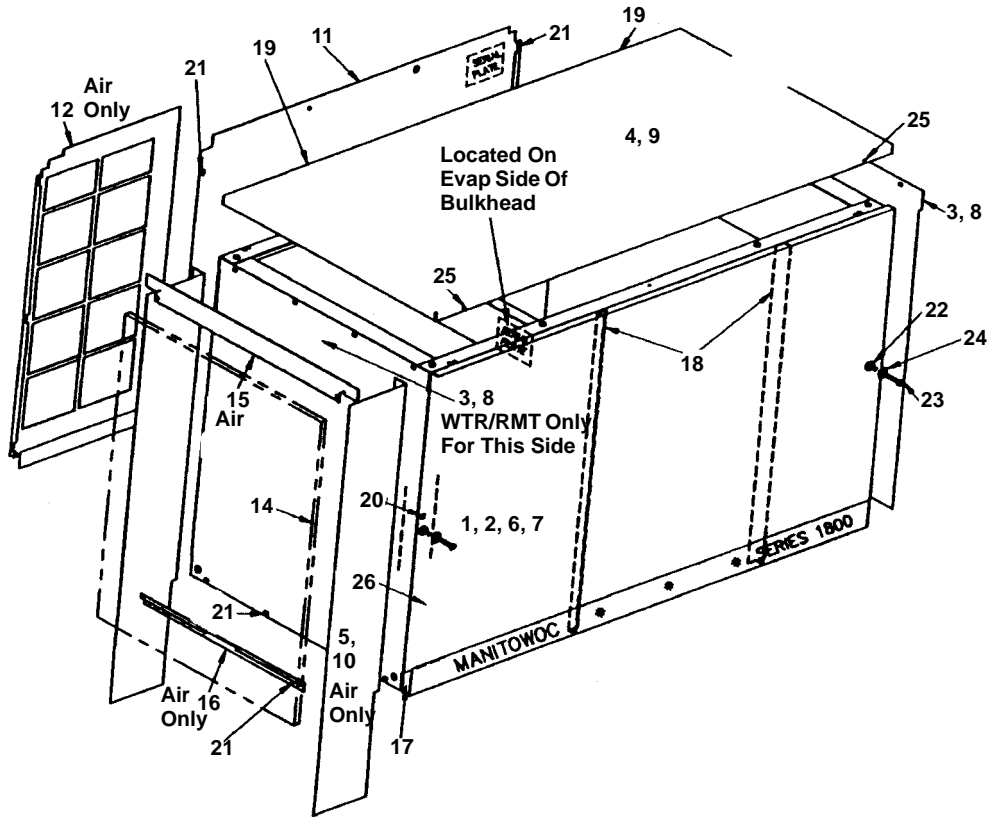
DESCRIPTION

DESCRIPTION	PART NO.
1 Compressor, 230/60/1*	† 76-0328-3
2 Compressor, 3 Phase*	† 76-0329-3
3 Check Valve	† 83-7315-9
4 Magni-check Valve	† 83-7314-9
5 Drier	† 89-3027-9
6 HPR Valve	† 83-6779-3
7 Low Pressure Cut-out	† 23-5540-9
8 Receiver	† 76-2958-3
9 Receiver Safety Soft Plug	† 628451-9
10 Receiver Service Valve	† 83-7316-9
11 Service Valve Cap	56-5075-3
12 Receiver Mounting Bracket	600056-1
13 Receiver Mounting Strap	630721-4
14 Solenoid, HPR 208/230V 50/60 Hz (Danfoss)	† 76-3006-1
15 Solenoid, Liquid Line	76-3010-1
16 Panel, Remote Coupling	600579-1
17 Hole Plug 1-1/16"	43-0192-3
18 Hole Plug 1.50"	† 43-0266-9
19 Male Coupling 1.062	† 83-6035-3
20 Male Coupling .625	† 83-6034-3
21 Mounting Flange	83-6006-3
22 Mounting Flange	83-6005-3
23 Screw, #10-24 x .50	† 52-0206-9
24 Female Coupling Kit (On line set)	SALES K0129

* See Page 9 for 50 Hz Applications

† Refer to Cross Reference Guide

B1300 PANELS



1327

FAWN

	PART NO.
1 Front Panel Assembly With Air Louvers	76-2572-3
2 Front Panel Assembly, Water and Remote	76-2574-3
3 Side Panels, RH or LH	600609-1
4 Top Cover	600608-1
5 Air Baffle	600655-1

STAINLESS STEEL

6 Front Panel Assembly With Air Louvers	76-2573-3
7 Front Panel Assembly, Water or Remote	76-2575-3
8 Side Panel, LH or RH	600609-2
9 Top Cover	600608-2
10 Air Baffle	600655-2

COMMON PARTS

11 Back Panel, Evaporator Side	600616-1
12 Back Panel, Air-cooled, Condenser Side	600617-1
13 Back Panel, Water and Remote	600579-1
14 Air Filter	40-4007-3
15 Air Filter Top Bracket	† 76-2686-3
16 Air Filter Bottom Bracket	† 76-2686-3
17 Top and Bottom Frame Angle	† 601389-1
18 Angle, Front Panel	600649-1
19 Accordion Panel Clip	† 56-4820-9
20 Cage Nut	† 54-2910-9
21 Screw, #10-24 x .50	† 52-0206-9
22 "O" Ring	† 37-1819-9
23 Screw, #8-32 x 1.50	† 50-2668-9
24 Washer, Flat Nylon	† 55-7338-9
25 Screw, #10-24 x .50	† 52-0209-9
26 Extruded Tape	† 92-0250-9

† Refer to Cross Reference Guide

B1300 ELECTRICAL APPLICATIONS

All parts are the same as the 60 Hz Model with the following exceptions:

230V/50 Hz/1 Phase

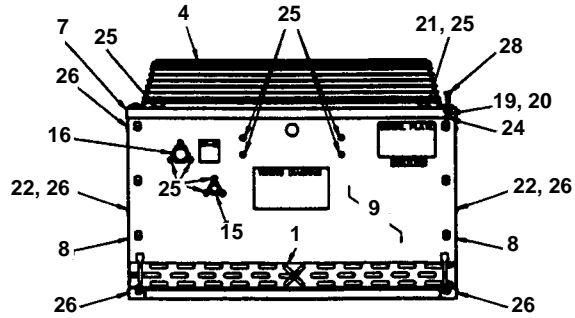
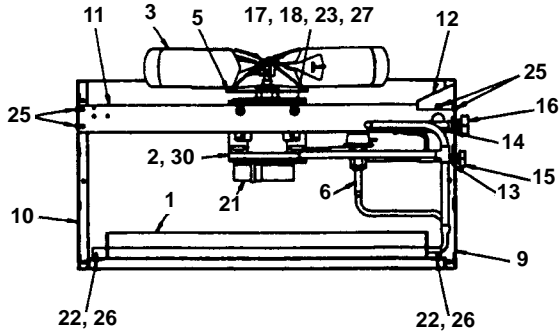
	PART NO.
Compressor	† 76-0330-3
Start Components for Bristol:	
Run Capacitor	† 20-1013-3
Start Capacitor	† 85-0385-3
Start Relay	85-0380-3
Start Components for Tecumseh:	
Run Capacitor	† 000000028
Start Capacitor	85-0551-3
Start Relay	20-0752-9
Start Components for Copeland:	
Run Capacitor	000000025
Start Capacitor	85-0513-3
Start Relay	20-0753-3
Water Pump	† 14-8027-9
7 Amp Fuse For Control Board	25-1100-3
.1 Amp Mini-fuse For Control Board	25-1105-3
Terminal Block	25-1103-3
Terminal Board With Wiring Harness	20-3170-3

415V/50 Hz/3 Phase

Compressor	† 76-2824-3
Water Pump	† 14-8027-9
7 Amp Fuse For Control Board	25-1100-3
.1 Amp Mini-fuse For Control Board	25-1105-3
Terminal Block	25-1103-3
Terminal Board With Wiring Harness	20-3164-3

† Refer to Cross Reference Guide

BC1395 REMOTE CONDENSER



1329

DESCRIPTION

DESCRIPTION	PART NO.
1 Air Condenser	88-5090-3
2 Fan Motor, 208-230V, 50/60 Hz	† 76-2941-3
3 Fan Blade	24-1611-3
4 Fan Guard	34-0064-3
5 Rain Slinger	24-1505-3
6 Head Pressure Control	83-6809-3
7 Top Cover	† 601389-1
8 Panel, Side	† 601790-1
9 Panel, Rear	601791-1
10 Panel, Front	† 601792-1
11 Base Bracket	† 601768-1
12 Electrical Cover	† 601776-1
13 Mounting Flange .25 x .38	83-6005-3
14 Mounting Flange .50 x .88	83-6006-3
15 Coupling, Male .63 -18	† 83-6034-3
16 Coupling, Male 1.06-12	† 83-6035-3
17 Lockwasher .31 Split	† 55-7313-9
18 Washer, Flat .31 ID	† 55-7309-9
19 Washer, Flat .25 Stainless	† 55-7304-9
20 Lockwasher .25 Split Stainless	† 55-4511-9
21 Lockwasher #10 Int. Phos	† 55-4464-9
22 Lockwasher #8 Int. Phos	† 55-4459-9
23 Nut .31-18 Steel Hex	54-2975-9
24 Nut .25-20 Steel Hex	† 54-2952-9
25 Screw, #10-24 x .62	† 52-0205-9
26 Screw, #8 x .5	† 51-2153-9
27 Screw, .31-18 x .62	† 50-3565-9
28 Screw, .25-2 x .62	† 50-3345-9
29 Screw, #8-32 x .50	† 50-2624-9
30 Fan Capacitor (Emerson)	85-0458-3
30 Fan Capacitor (Magnatec)	No Longer Available
31 Terminal Block	76-2878-3
32 Terminal Block Mounting Bracket	600868-1
33 Female Coupling Kit	SALES K0129

50 Hz APPLICATION

34 Fan Motor, 230V, 50 Hz	† 76-2941-3
-------------------------------------	-------------

† Refer to Cross Reference Guide