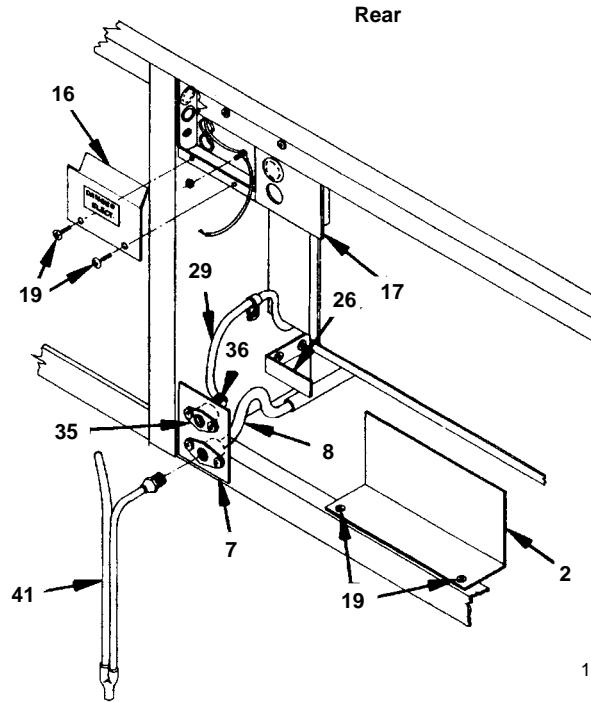
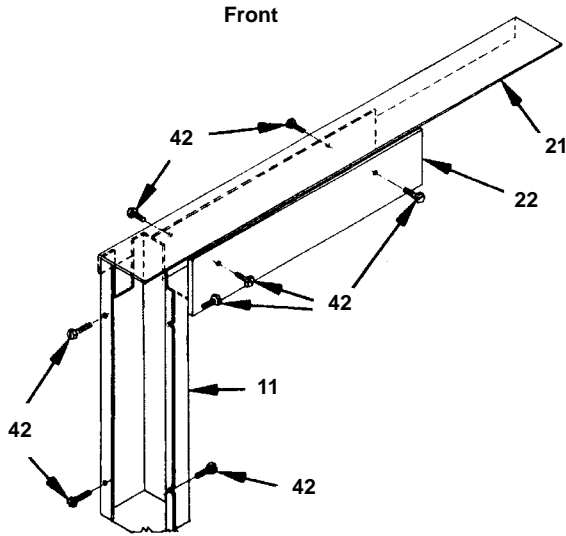




**Ice Machine Parts List
For Models**

ER-1100A	ER-1101W
ED-1102A	ED-1103W
EY-1104A	EY-1105W
EY-1114A	EY-1115W
Remote Cuber	
ER-1190N	EY-1194N
ED-1192N	EY-1184N

Manufactured October 1984 through June 1986



1171

**WATER CIRCUIT GROUP
& EXPANSION VALVES**

	PART NO.
1 Control Box Cover (Air)	No Longer Available
1 Control Box Cover (Water and remote)	76-2108-3
2 Curtain Limiter Bracket	622341-4
3 Distributor Tube, Front	76-2103-3
4 Distributor Tube, Rear	76-2104-3
5 Distributor Tube Mounting Clip	† 56-5047-9
6 Distributor Tube Centering Pin	† 50-1313-9
7 Drain Fitting Mounting Plate\	No Longer Available
8 Drain Tube Assembly	621751-4
9 Expansion Valve	† 83-6728-9
10 Expansion Valve Stainless Steel Clamp	† 56-5052-9
11 Expansion Valve Enclosure Assembly	No Longer Available
12 Float Valve	† 83-6904-9
13 Float Valve Bracket	No Longer Available
14 Ice Thickness Control	† 76-2061-3
15 Ice Thickness Control Bracket	618581-4
16 Junction Box Cover	No Longer Available
17 Junction Box Weldment	No Longer Available
18 Nylon Nut for Centering Pin	† 54-2945-9
19 Screw, Self Tap Hex	† 52-0210-9
20 Splash Shield	660831-4
21 Suction Tube Cover	No Longer Available
22 Suction Tube Enclosure Assembly	No Longer Available
23 Sump Trough (For units with siphon assembly)	685161-4
24 Sump Trough (For units with dump valve)	† 687721-9
25 Sump Trough Support Left Hand	No Longer Available
26 Sump Trough Support Right Hand	660271-4
27 Sump Trough Support Weldment	660251-4
28 Thumbscrews (Pkg. of 6)	† 53-0504-9
29 Tubing, Polyflow, 1/4" OD	44-2029-1

	PART NO.
30 Union with Sleeve and Nut (At strainer)	83-6129-3
31 Water Curtain Assembly (Front or rear)	† 685531-4
32 Water Curtain Hanger (On water curtain)	† 56-5045-9
33 Water Curtain Hooks, Set of Right and Left Hand*	† 76-2177-3
34 Water Flow Clamp Assembly	76-2054-3
35 Water Inlet Adapter	600242-1
36 Water Inlet Adapter Elbow	17-0328-1
37 Water Inlet Strainer	† 12-6003-3
38 Water Pump	† 14-8027-9
39 Water Pump Bracket	† 608041-4
40 Water Pump "Y" Tube Assembly	† 76-2126-3
41 Water Syphon Assembly	76-2091-3
42 Wing Nuts	† 54-8913-9
43 Pump Discharge Tube Clamp	† 56-5053-9

*When ordering water curtain hooks for a machine with SN prior to 850760600 also order a new water curtain.

EVAPORATOR ASSEMBLY GROUP

Regular Evaporator Assembly

Front	No Longer Available
Rear	No Longer Available

Dice Evaporator Assembly

Front	No Longer Available
Rear	No Longer Available

Half Dice Evaporator Assembly

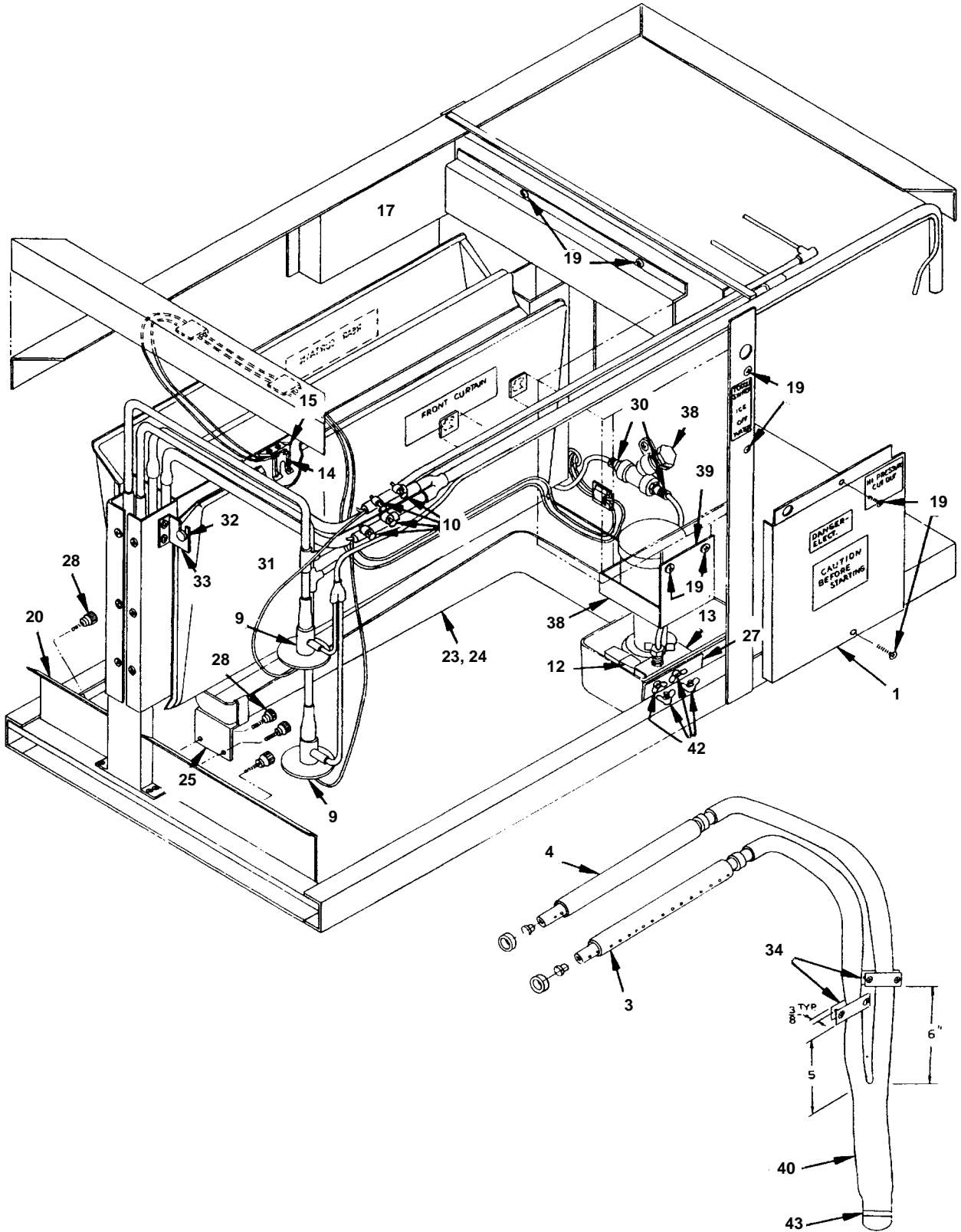
Front	No Longer Available
Rear	No Longer Available

Top Evaporator Extrusion Assembly

Front	76-2111-3
Rear	76-2110-3

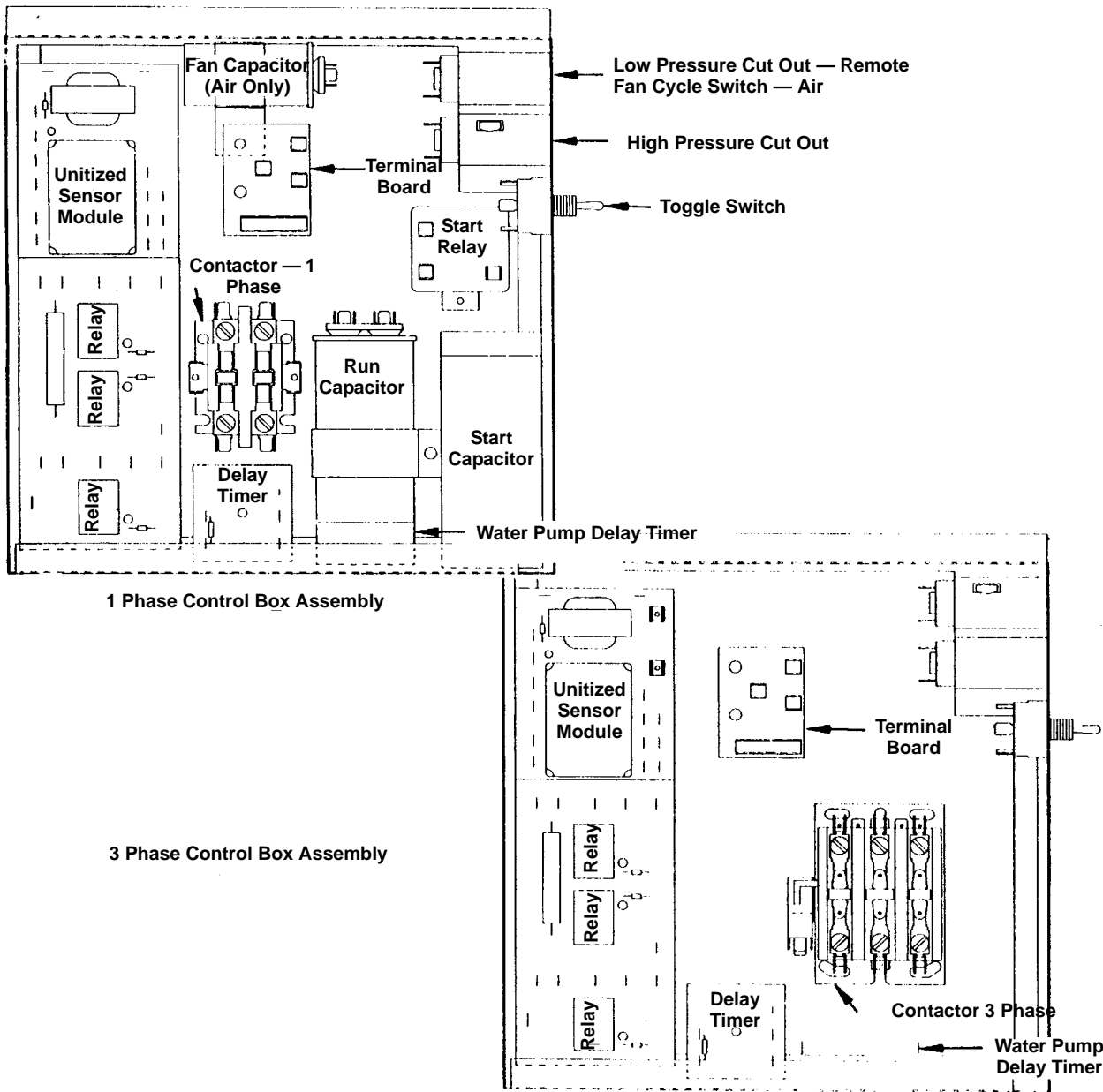
† Refer to Cross Reference Guide

E1100, CONTINUED



1172

E1100, CONTINUED



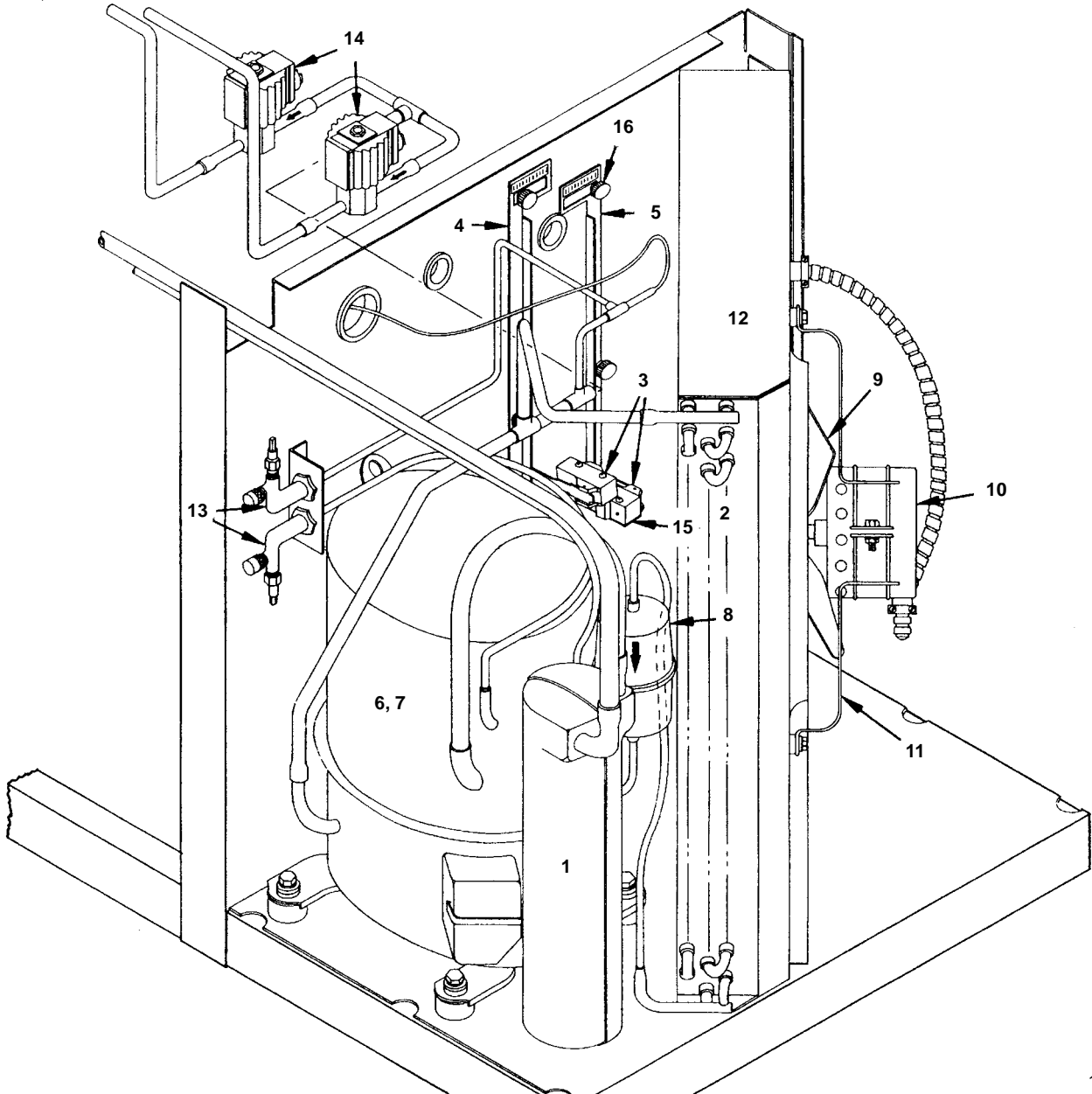
1173

CONTROL BOX COMPONENTS	PART NO.		PART NO.
Contactor - 1 Phase	† 24-1016-9	Relay Mounting Board	24-0812-3
Contactor - 3 Phase		Unitized Sensor Module	† 76-2375-3
(Includes microswitch)	24-1017-3	Terminal Board	25-1045-3
Control Box Cover (Air)	76-2107-3	Toggle Switch	† 23-0084-9
Control Box Cover		Delay Timer - 7 seconds	† 24-0635-3
(Water and remote)	76-2108-3	Water Pump Delay Timer	† 24-0642-3
Fan Capacitor	No Longer Available	Bristol - Run Capacitor	20-1014-3
Fan Cycle Switch	No Longer Available	Start Capacitor	85-0364-3
Fuse (Pkg. of 6) 5 amp	† 25-1037-9	Start Relay	85-0365-3
High Pressure Cut-out	23-5511-3	Tecumseh - Run Capacitor	† 85-0439-3
High Pressure Cut-out McDonalds		Start Capacitor	† 85-0314-3
after SN 85106000	No Longer Available	Start Relay	85-0313-3
Low Pressure Cut-out (Remote)	23-5514-3		
Relay	24-0813-3		

NOTE: For 50 cycle parts see Page 8.

† Refer to Cross Reference Guide

E1100, CONTINUED



1174

AIR COOLED CUBER

	PART NO.
1 Accumulator Assembly*	76-2094-3
2 Air Condenser	No Longer Available
2 Air Condenser/Fan/Shroud Assembly	No Longer Available
3 Bin Switch	† 622201-9
4 Bin Switch Bracket (Front)	76-2105-3
5 Bin Switch Bracket (Rear)	76-2106-3
6 Compressor - 1 Phase**	No Longer Available
7 Compressor - 3 Phase**	† 76-2044-3
8 Drier	† 89-3027-9

AIR COOLED CUBER

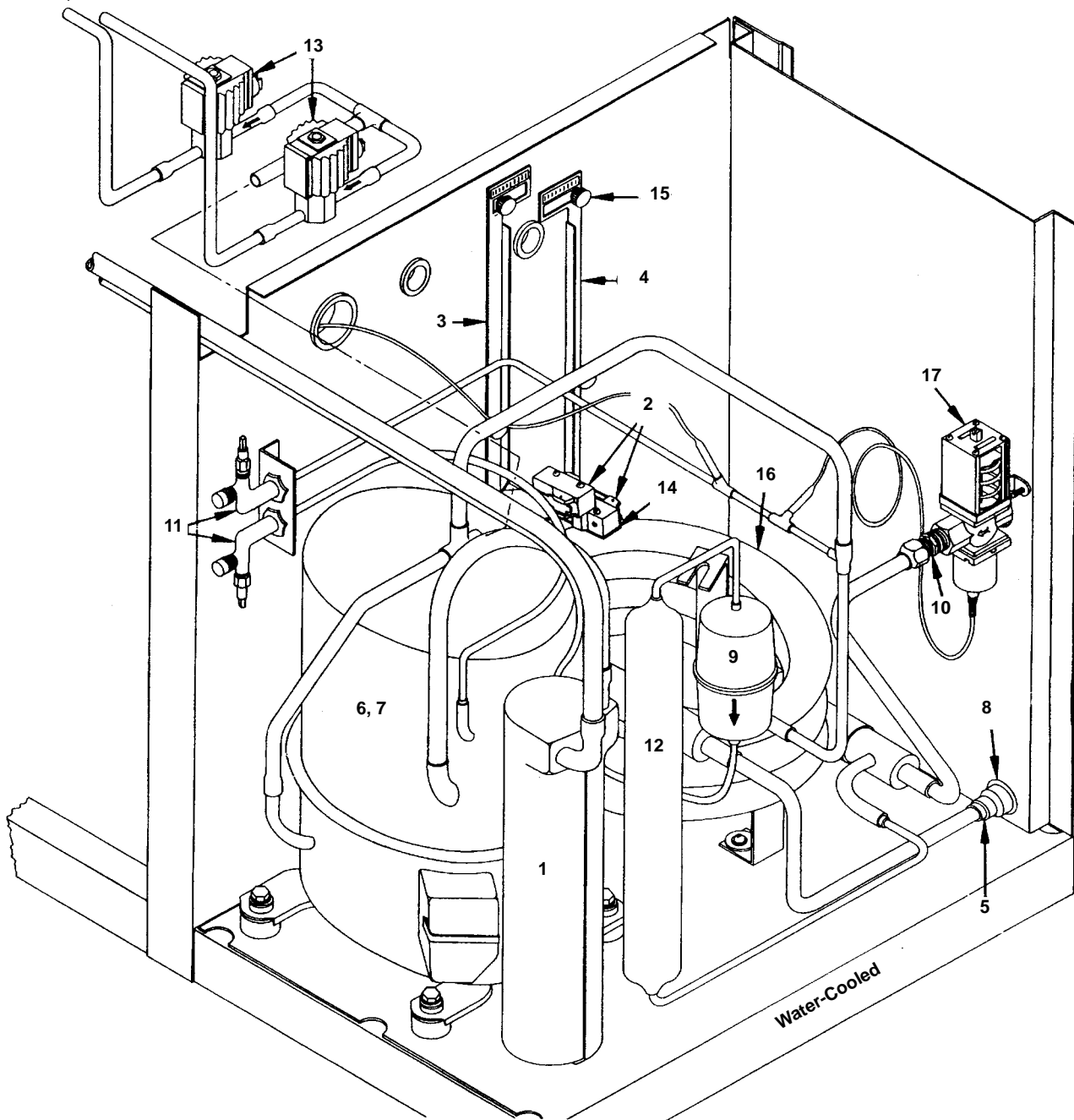
	PART NO.
9 Fan Blade	24-1609-3
10 Fan Motor	24-1236-3
11 Fan Mounting Bracket	34-0616-3
11 Fan Mounting Grommets	† 54-2955-9
12 Fan Shroud	No Longer Available
13 Process Valve	† 83-7310-9
14 Solenoid Valve	† 24-0424-3
15 Switch Insulator	620831-4
16 Thumbscrew	† 53-0504-9

*Not used after SN 850965601

**For 50 cycle units see Page 8.

† Refer to Cross Reference Guide

E1100 WATER-COOLED



1175

WATER COOLED CUBER

	PART NO.
1 Accumulator Assembly*	76-2094-3
2 Bin Switch	† 622201-9
3 Bin Switch Bracket (Front)	76-2105-3
4 Bin Switch Bracket (Rear)	76-2106-3
5 Bushing 5/8" to 1/2"	† 13-0005-9
6 Compressor - 1 Phase**	No Longer Available
7 Compressor - 3 Phase**	† 76-2044-3
8 Drain Adapter	17-0602-1

*Not used after SN 850965601

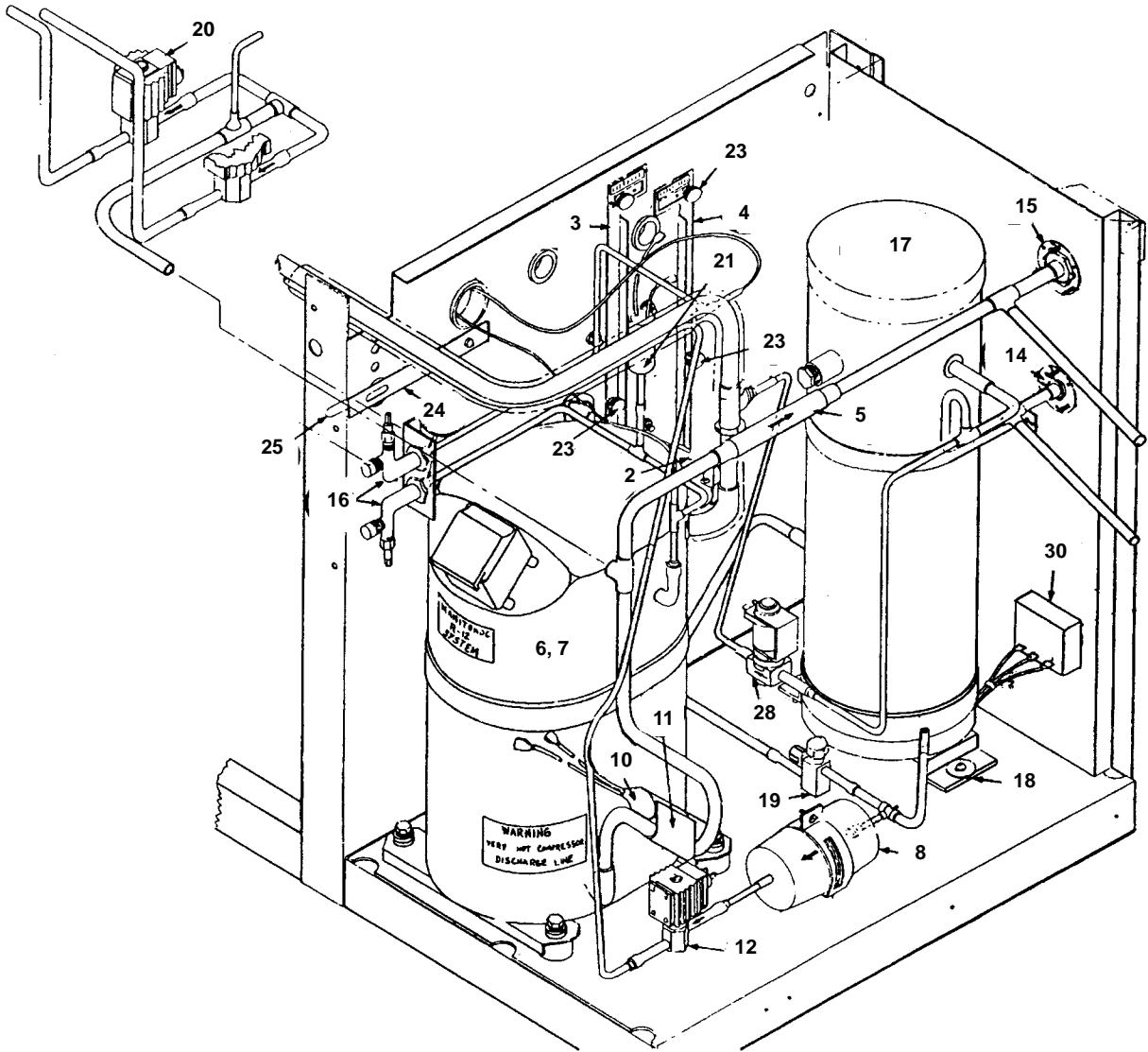
**For 50 cycle units see Page 8.

WATER COOLED CUBER

	PART NO.
9 Drier	† 89-3027-9
10 Half Union Coupling	83-3203-3
11 Process Valve	† 83-7310-9
12 Receiver	† 76-2092-3
13 Solenoid Valve	† 24-0424-3
14 Switch Insulator	620831-4
15 Thumbscrew	† 53-0504-9
16 Water Condenser	† 11-6511-7
17 Water Regulating Valve	83-7206-3

† Refer to Cross Reference Guide

E1100 REMOTE



1176

REMOTE CUBER

	PART NO.
1 Accumulator Assembly	Replace with 76-2187-3
2 Bin Switch	† 622201-9
3 Bin Switch Bracket (Front)	76-2105-3
4 Bin Switch Bracket (Rear)	76-2106-3
5 Check Valve	† 83-7315-9
6 Compressor - 1 Phase*	No Longer Available
7 Compressor - 3 Phase*	† 76-2044-3
8 Drier	† 89-3027-9
9 Head Pressure Control - in Remote Condenser	
10 Heater	† 76-2013-3
11 Heater Well	No Longer Available
12 Liquid Solenoid Valve Assembly	24-0433-3
13 Liquid Solenoid Coil Only Alco.	† 24-0448-3
14 Mounting Flange 3/8"	83-6005-3
15 Mounting Flange 1/2"	83-6006-3
16 Process Valve	† 83-7310-9
17 Receiver	† 76-2327-3
18 Receiver Mounting Bracket	608681-4

REMOTE CUBER

	PART NO.
19 Receiver Service Valve	† 83-7316-9
20 Solenoid Valve	† 24-0424-3
21 Suction Pressure Limiter	23-0113-3
22 Switch Insulator	620831-4
23 Thumbscrew	† 53-0504-9
24 Toggle Switch Lever	No Longer Available
25 Toggle Switch Cap	† 43-0045-9
26 Headmaster (if in ice machine)	† 83-6804-9
27 HPR ValveReplace with 76-2187-3
28 HPR Solenoid Valve Only 208/230V 50/60 Hz (Danfoss)	† 76-3008-1
29 HPR Timer Kit	† 76-2267-3
30 HPR Timer Only (7-second)	† 24-0635-3

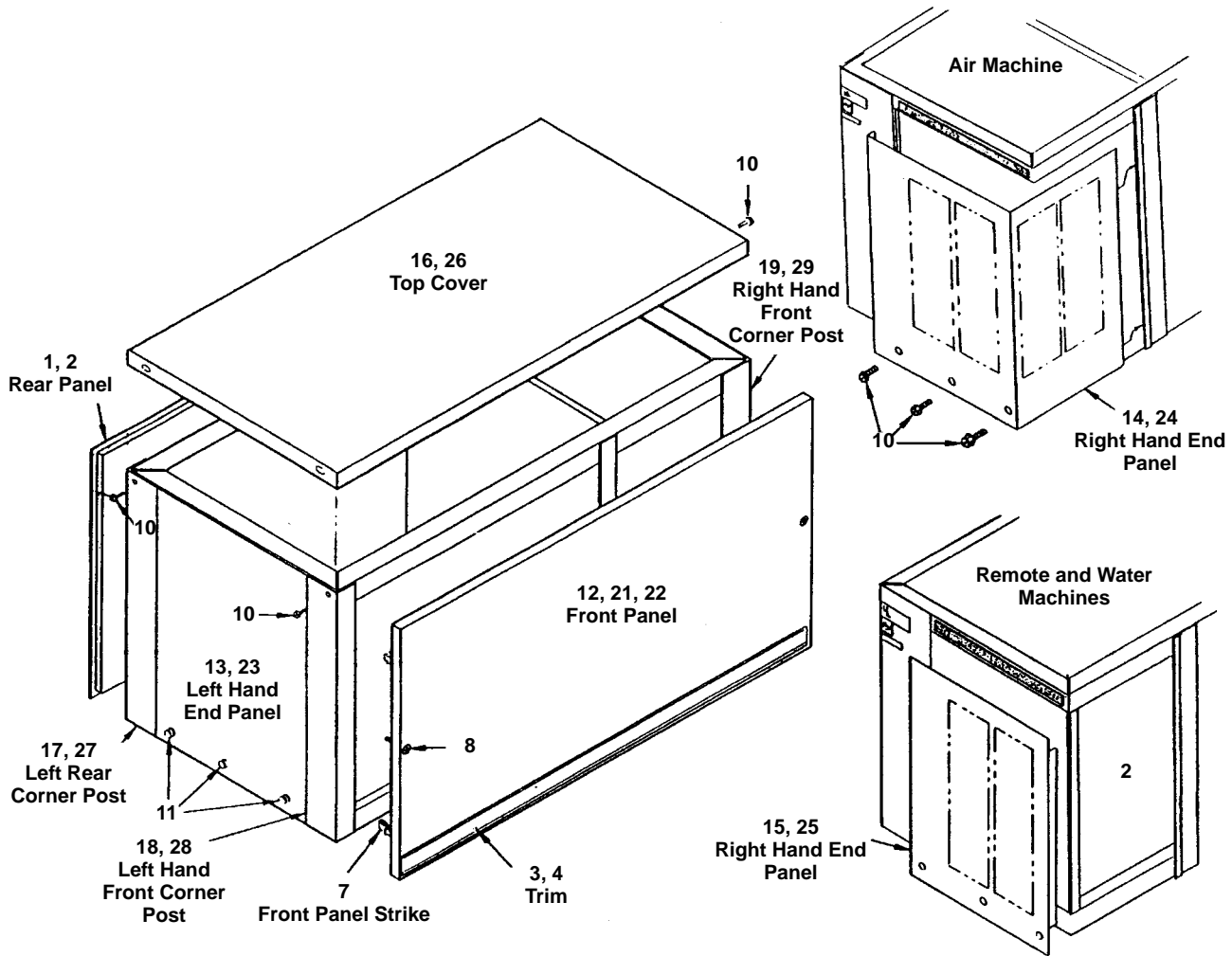
Not shown:

Aeroquip Male Coupling 1/2"	† 83-6035-3
Aeroquip Male Coupling 3/8"	† 83-6034-3
"0" Ring 1/2"	† 83-6012-9
"0" Ring 3/8"	† 83-6013-9

*For 50 cycle units see Page 8.

† Refer to Cross Reference Guide

E1100



1177

REMOTE CUBER COMMON PARTS

	PART NO.
1 Rear Panel Prior to SN 840563262	No Longer Available
2 Rear Panel After SN 840563262	76-2079-3
2 Water Panel	No Longer Available
2 Remote Panel	No Longer Available
3 Trim - Front Panel	† 81-3151-3
4 Trim - Front Panel McDonalds	81-3152-3
5 Front Panel Strike and Catch (4 sets)	76-2029-3
6 Front Panel Fastener Catches Only (Pkg. of 12)	76-2064-3
7 Front Panel Fastener Strikes Only (Pkg. of 25)	76-2063-3
8 Front Panel Fastener Screw (Pkg. of 12)	†50-2668-9
9 Front Panel Fastener Cage Nut (Pkg. of 12)	† 54-2910-9
10 Screw, 10-24 x 3/4 Hexhead	† 52-0210-9
11 Thumbscrew	† 50-1209-9

FAWN

12 Front Panel (Textured fawn)	76-2088-3
13 Left Hand End Panel	76-2081-3
14 Right Hand End Panel (Air)	684621-4
15 Right Hand End Panel (Water and remote)	659871-4
16 Top Cover	657251-4
17 Corner Post Assembly, Left Hand Rear	No Longer Available

REMOTE CUBER

18 Corner Post Assembly, Left Hand Front	No Longer Available
19 Corner Post Assembly, Right Hand Front	No Longer Available
20 Fawn Touch Up Paint	94-0093-1

STAINLESS STEEL

21 Front Panel	76-2089-3
22 Front Panel (McDonalds)	No Longer Available
23 Left Hand End Panel	76-2080-3
24 Right Hand End Panel (Air)	No Longer Available
25 Right Hand End Panel (Water and remote)	No Longer Available
26 Top Cover	No Longer Available
27 Corner Post Assembly, Left Hand Rear	No Longer Available
28 Corner Post Assembly, Left Hand Front	76-2083-3
29 Corner Post Assembly, Right Hand Front	684642-4

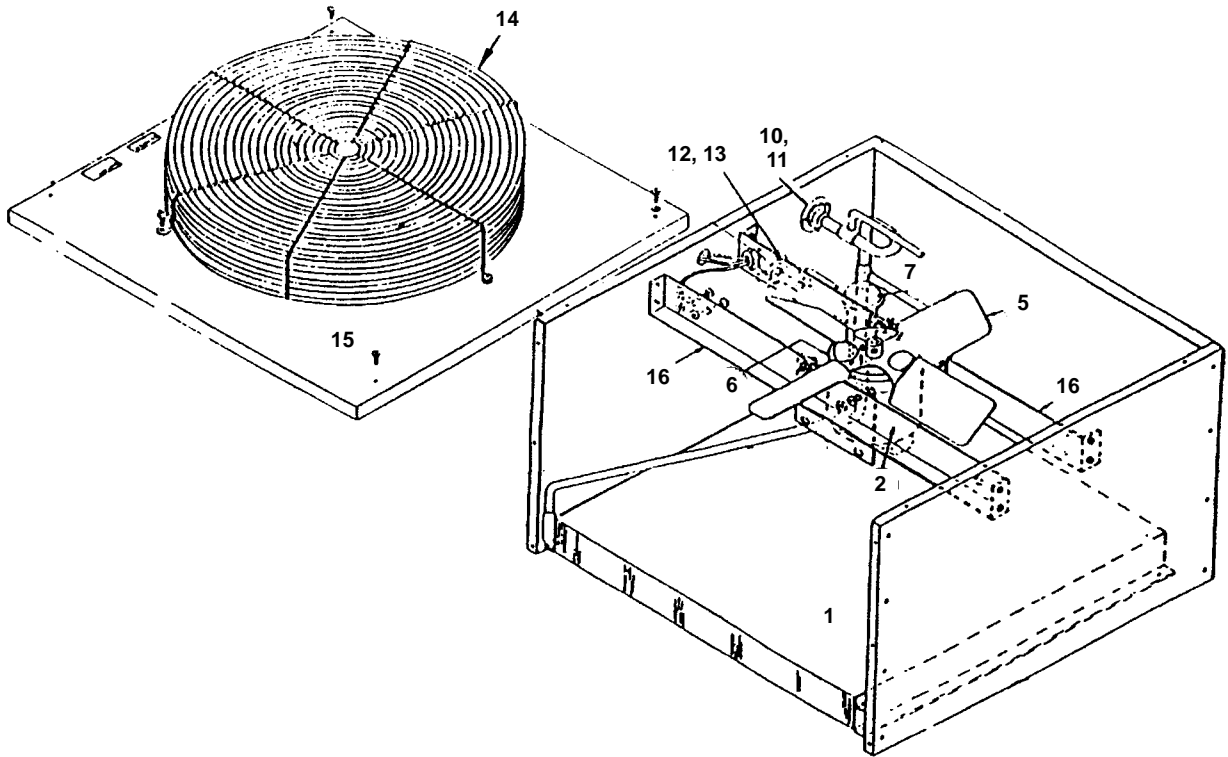
50 CYCLE CUBER

(All parts same except)

	PART NO.
1 Compressor 50 Hz 1 Phase	No Longer Available
2 Relay	85-0313-3
3 Start Capacitor	† 85-0314-3
4 Run Capacitor	† 85-0439-3
5 Water Pump	† 14-8027-9
6 Compressor 50 Hz 3 Phase	No Longer Available
7 Unitized Sensor Board	† 76-2396-3

† Refer to Cross Reference Guide

AC1195 REMOTE CONDENSER



1178

	PART NO.
1 Air Condenser	† 88-5062-9
2 Fan Motor, 60 Hz*	† 76-2941-3
3 Fan Motor, 50 Hz*	† 76-2941-3
4 Fan Capacitor*	85-0335-3
5 Fan Blade*	24-1611-3
6 Rain Slinger*	24-1505-3
7 Headmaster Control (See item 19 below)	† 83-6804-9
8 Toggle Switch up to SN 82020001	No Longer Available
9 Toggle Switch after SN 82020001	No Longer Available
10 Coupling Assembly, Male 1/2"	† 83-6035-3
11 Mounting Flange 1/2"	83-6006-3
12 Coupling Assembly, Male 3/8"	† 83-6034-3
13 Mounting Flange 3/8"	83-6005-3
14 Fan Grill	34-0064-3
15 Top Cover	† 601775-1
16 Base Bracket	† 601768-1
17 Valve Access Fitting Core	† 13-7305-9
18 Female Coupling Kit (Not shown)	07-0062-3
19 Headmaster Relocation Kit (Used for units originally built with headmaster in ice machine to relocate to condenser).	No Longer Available

*Early models used a single bracket to mount to fan motor. Those units use the following parts:

Fan Motor 60 Hz 230V	† 76-1984-3
Fan Motor 50 Hz 230V	† 76-1985-3
Rain Shield	No Longer Available
Fan Blade	24-1604-3
Run Capacitor	24-1502-3

† Refer to Cross Reference Guide

INTENTIONALLY LEFT BLANK