

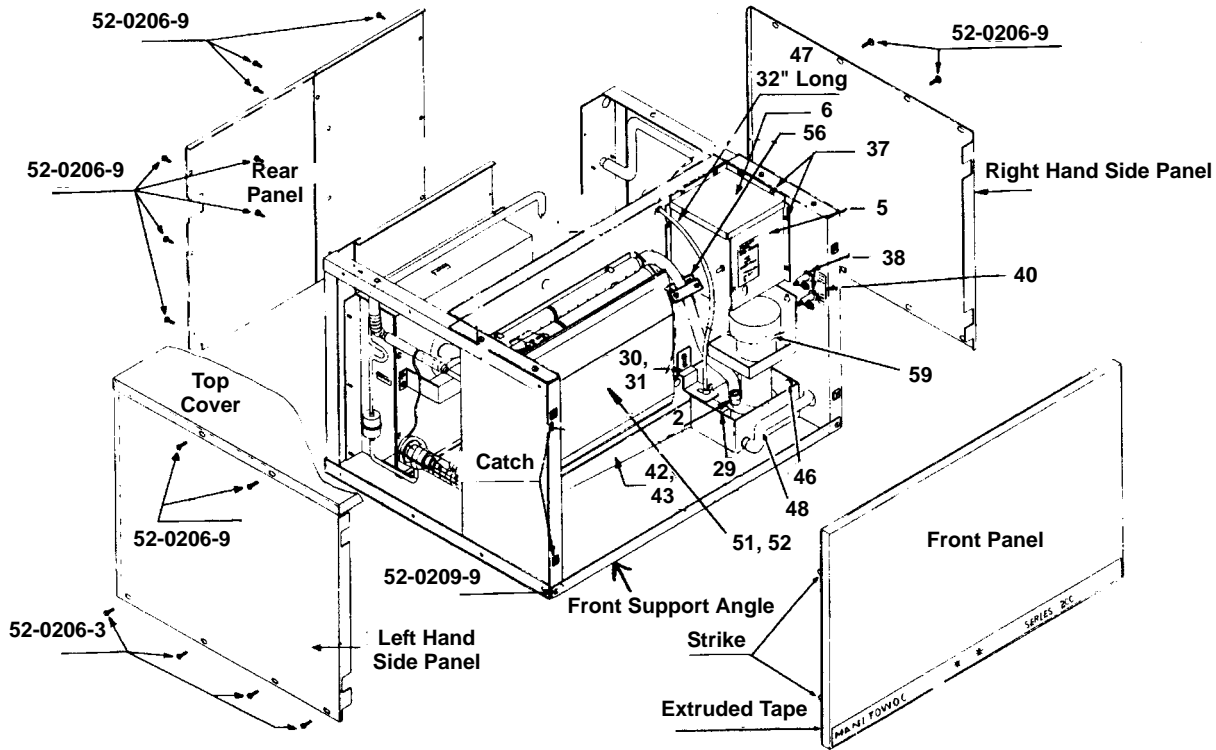


## **Ice Machine Parts List for E-0200 and E-0400 Series Cuber Models**

<b>ER-0200A</b>	<b>ER-0400A</b>
<b>ER-0201W</b>	<b>ER-0401W</b>
<b>ED-0202A</b>	<b>ED-0402A</b>
<b>ED-0203W</b>	<b>ED-0403W</b>
<b>EY-0204A</b>	<b>EY-0404A</b>
<b>EY-0205W</b>	<b>EY-0405W</b>
<b>ED-0492N</b>	<b>EY-0494N</b>
<b>ER-0490N</b>	

**Manufactured February 1983 through December 1990**

# E0200 AND E0400



1151

### OUTER PANELS - FAWN E0200 E0400

X	X	Front Panel . . . . .	†76-1992-3
X	X	Left Hand End Panel . . . . .	† 686161-9
X	X	Right Hand End Panel . . . . .	† 685771-9
	X	Right Hand Side Panel - Remote . .	†76-2119-3
X	X	Top Cover . . . . .	683821-4
X	X	Touch Up Paint . . . . .	94-0093-1

### OUTER PANELS - STAINLESS STEEL

X		Front Panel . . . . .	76-2042-3
	X	Front Panel . . . . .	†76-1993-3
X	X	Left Hand End Panel . . . . .	† 686163-9
X	X	Right Hand End Panel . . . . .	† 685773-9
	X	Right Hand Side Panel - Remote . .	†76-2120-3
X	X	Top Cover . . . . .	683823-4

### COMMON PARTS

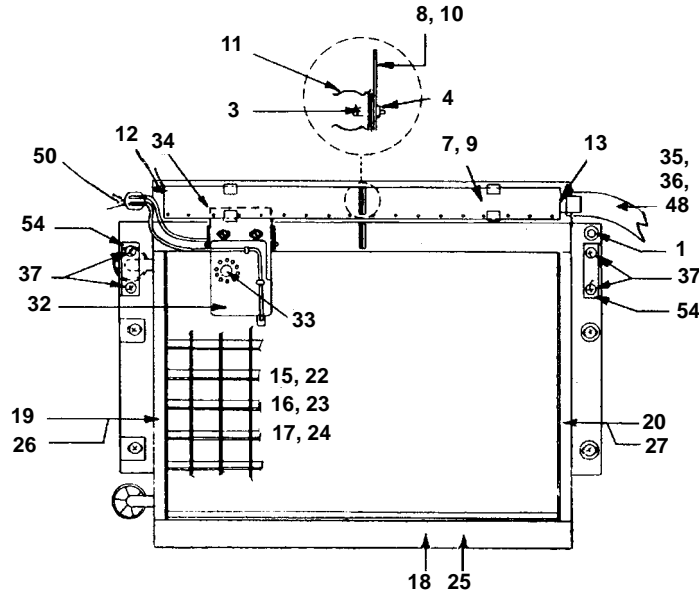
X	X	Front Support Angle . . . . .	† 658041-9
X	X	Rear Panel - Air-cooled . . . . .	No Longer Available
X	X	Rear Panel - Water-cooled . . . . .	†76-2148-3
X		Rear Panel - Remote Unit . . . . .	No Longer Available
	X	Front Panel Trim . . . . .	†81-3486-3
X		Front Panel Trim . . . . .	†81-3486-3
X	X	Front Panel Extruded Tape . . . . .	†92-0250-9

### COMMON PARTS E0200 E0400

X	X	Panel Strike and Catch (Pkg. of 4 each) . . . . .	76-2029-3
X	X	Front Panel Strike Only (Pkg. of 25) . . . . .	76-2063-3
X	X	Front Panel Catch Only (Pkg. of 12) . . . . .	76-2064-3
X	X	"O" Ring For Front Panel . . . . .	†37-1819-9
X	X	10-24 Phillips Head Screw (Mounting control box cover) (Pkg. of 12) . . . . .	†52-0205-9
X	X	10-24 Slot Head Screw (Mounting outer panels) (Pkg. of 12) . . . . .	†52-0206-9
X	X	10-24 Phillips Head Screw (Mounting front angle support) (Pkg. of 12) . . . . .	†52-0209-9
X	X	Front Panel Fastener Screw . . . . .	†50-2668-9
X	X	Nut Cage For Screw . . . . .	†54-2910-9
X	X	Hole Plug . . . . .	†43-0155-9
X	X	Complete Cartoning . . . . .	No Longer Available

† Refer to Cross Reference Guide

# E0200 AND E0400 EVAPORATOR AND WATER DISTRIBUTION

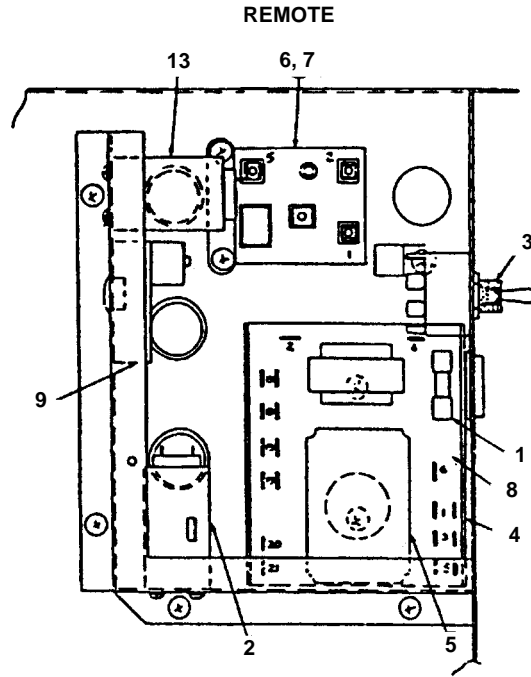
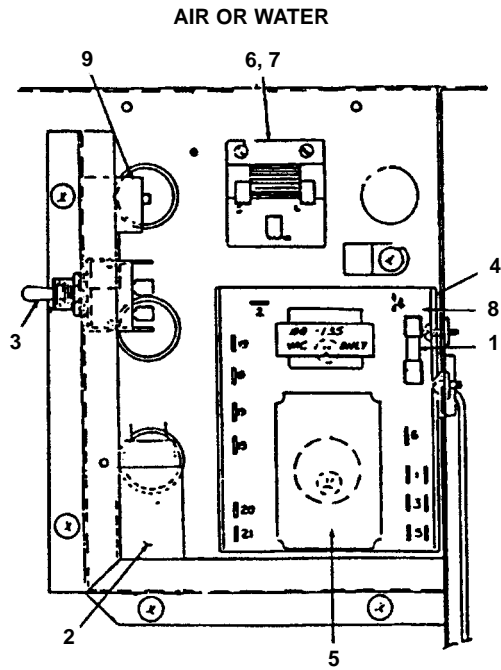


1152

		PART NO.				PART NO.			
E0200	E0400			E0200	E0400				
1	X	X	Activating Pin Assembly . . . . .	76-2025-3	34	X	X	Ice Thickness Control Bracket. . . . .	618581-4
2	X	X	Reducer Assembly. . . . .	76-2377-3	35		X	Pump Discharge Tube (White vinyl)* . . . . .	†76-2182-3
3	X	X	Centering Pin. . . . .	†50-1313-9	36	X		Pump Discharge Tube (White vinyl)* . . . . .	76-2181-3
4	X	X	Centering Pin Nylon Nut . . . . .	†54-2945-9	37	X	X	Screw 10-24 Phillips Head (Pkg. of 12) . . . . .	†52-0205-9
5	X	X	Control Box Front Cover . . . . .	†76-2150-3	38	X	X	Service Valve, High and Low Side . . . . .	†83-7310-9
6	X	X	Control Box Top Cover. . . . .	†660771-4	39	X	X	Service Valve Cover . . . . .	No Longer Available
7	X		Distribution Tube Assembly . . . . .	76-2040-3	40	X	X	Service Valve Label . . . . .	†81-3147-3
8	X		Distribution Tube Mounting Bracket . . . . .	76-2048-3	41	X	X	Splash Shield, Mylar . . . . .	96-0088-3
9		X	Distribution Tube Assembly . . . . .	76-1988-3	42	X	X	Sump Trough before SN 860160331 . . . . .	†76-1989-3
10		X	Distribution Tube Mounting Bracket . . . . .	76-2049-3	43	X	X	Sump Trough after 860160331 . . . . .	686101-4
11	X	X	Distribution Tube Spring Clip . . . . .	†56-5047-9	44	X	X	Sump Trough Support Pin . . . . .	†50-1313-9
12	X	X	Distribution Tube End Plug . . . . .	†44-0820-9	45	X	X	Support Pin Nylon Nut . . . . .	†54-2945-9
13	X	X	Distribution Tube Collar . . . . .	†44-0821-9	46	X	X	Thumbscrew (Mounting sump trough) . . . . .	†53-0504-9
14	X	X	Drier . . . . .	†12-3005-9	47	X	X	Tubing, Polyflow (Freshwater inlet to float valve) . . . . .	44-2029-1
15	X		Evaporator, Dice . . . . .	†684521-9	48	X	X	Tygon Tubing 1/2" (Used with dump valve) . . . . .	†44-2033-3
16	X		Evaporator, Half Dice. . . . .	†684531-9	49			Black Drain Tube (Used with siphon) . . . . .	No Longer Available
17	X		Evaporator, Regular. . . . .	†684511-9	50	X	X	Terminal Bushing . . . . .	†25-0207-3
18	X		Grid Extrusion, Bottom. . . . .	†660741-4	51	X		Water Curtain . . . . .	†76-2039-3
19	X		Grid Extrusion, Left Hand End. . . . .	625941-4	52	X	X	Water Curtain . . . . .	†76-1987-3
20	X		Grid Extrusion, Right Hand End. . . . .	625942-4	53	X	X	Water Curtain Hanger (White plastic) . . . . .	†56-5045-9
21	X		Grid Extrusion, Top . . . . .	†666981-4	54	X	X	Water Curtain Bracket (Set of RH and LH) . . . . .	†76-2177-3
22		X	Evaporator, Dice . . . . .	†684321-9	55	X	X	Water Flow Plate. . . . .	620781-4
23		X	Evaporator, Half Dice. . . . .	†684331-9	56	X	X	Water Flow Clamp Assembly . . . . .	76-2054-3
24		X	Evaporator, Regular. . . . .	†684311-9	57	X		Water Flow Restrictor . . . . .	†44-0004-9
25		X	Grid Extrusion, Bottom. . . . .	†660731-4	58		X	Water Flow Restrictor . . . . .	†44-0005-9
26		X	Grid Extrusion, Left Hand End. . . . .	†625971-4	59	X	X	Water Pump 60 Hz 115V . . . . .	†76-2306-3
27		X	Grid Extrusion, Right Hand End. . . . .	†625972-4	60	X	X	Water Inlet Strainer . . . . .	†12-6003-3
28		X	Grid Extrusion, Top . . . . .	†666991-4				*Used with Siphon System Only.	
29	X	X	Float Valve. . . . .	†83-6904-9					
30	X	X	Float Valve Bracket before SN 840100000 . . . . .	†617541-4					
31	X	X	Float Valve Bracket after SN 840100000 . . . . .	†76-2140-3					
32	X	X	Ice Thickness Control . . . . .	†76-1996-3					
33	X	X	Ice Thickness Control Thumbscrew . . . . .	50-1203-1					

† Refer to Cross Reference Guide

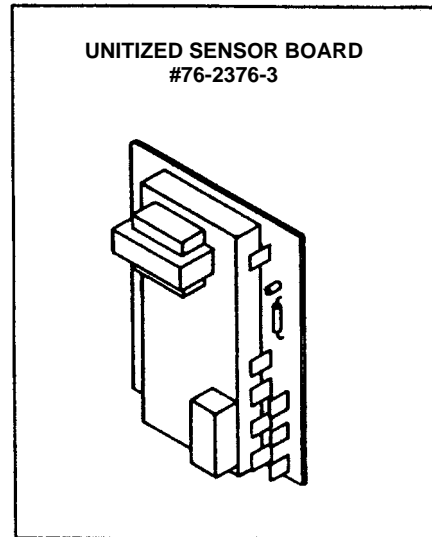
# E0200 AND E0400 CONTROL BOX AIR OR WATER AND REMOTE



1153

### PART NO.

	E0200	E0400		
1	X	X	Fuse	†25-1037-9
2	X	X	High Pressure Cut-out Control (Water and remote only)	†23-5501-1
3	X	X	Main Toggle Switch	†23-0084-9
4	X	X	Mounting Track (For transformer board)	44-0801-3
5	X	X	Sensor Module	Replace with †76-2376-3
6	X	X	Start Relay	See Page 9
7	X	X	Start Relay	See Page 9
8	X	X	Transformer Board 115V 60 Cycle	Replace with †76-2376-3
9	X	X	Water Pump Delay Timer 115V	†24-0642-3
10	X	X	Control Box	No Longer Available
11	X	X	Control Box Cover	†76-2150-3
12	X	X	Control Box Top	†660771-4
13	X	X	Low Pressure Control	76-2397-3

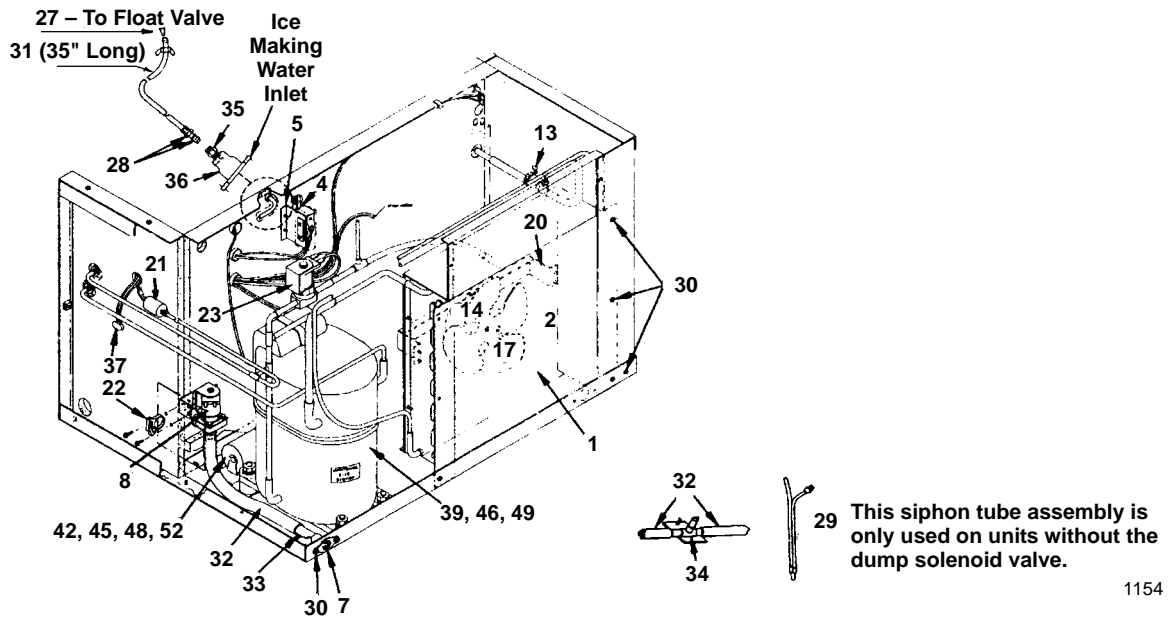


1153a

Unitized sensor board can be used to replace both the transformer board and sensor module . . . . . †76-2376-3

**NOTE:** For 50 Hz or 60 Hz 220V parts see Page 12.

## E0200 AND E0400 AIR-COOLED COMPRESSOR COMPARTMENT



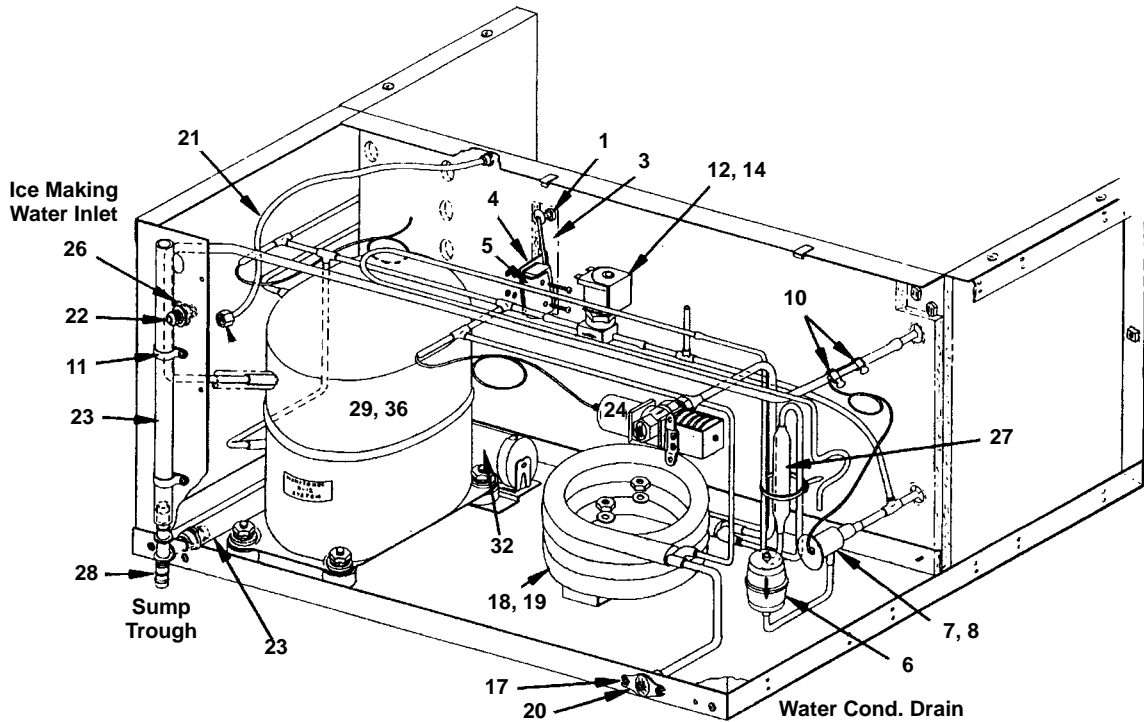
1154

		PART NO.				PART NO.		
E0200	E0400			E0200	E0400			
1	X	X	Shroud Assembly (Early model 400) . . . . .	76-2456-3	27	X	X	Nylon Insert (At float valve inlet) †44-2030-9
1		X	Shroud Assembly after SN 841061416 . . . . .	†76-2458-3	28	X	X	Sleeve and Nut . . . . . 83-6125-3
2	X	X	Air Condenser Only . . . . .	†88-5046-3	29	X	X	Siphon Tube Assembly . . . . . No Longer Available
3	X	X	Air Baffle . . . . .	†76-2068-3	30	X	X	Slot Head Screw 10-24 (Pkg. of 12) . . . . . †52-0206-9
4	X	X	Bin Switch . . . . .	†23-0111-9	31	X	X	Tubing, Polyflow 1/4" OD . . . . . 44-2029-1
5	X	X	Bin Switch Bracket . . . . .	617531-4	32	X	X	Tubing, Clear Vinyl, 1/2" ID . . . . . †44-2033-3
6	X	X	Bin Switch Mylar Insulation . . . . .	619961-4	33	X	X	Tubing, 5/8" OD x 2 . . . . . 623451-4
7	X	X	Drain Adapter . . . . .	17-0602-1	34	X	X	Water Tee Break . . . . . 76-2155-3
8	X	X	Dump Solenoid Coil Only 115V Dole . . . . .	No Longer Available	35	X	X	Union . . . . . 13-6096-1
8	X	X	Dump Solenoid 115V Alco . . . . .	000001767	36	X	X	Water Inlet Adapter . . . . . 600242-1
9	X	X	Diaphragm Only - Dole Valve . . . . .	24-0468-3	37	X	X	Water Pump Lead with Female Plug . . . . . †20-7311-3
10	X		Expansion Valve - R12 . . . . .	†76-2062-3	38	X	X	Dump Solenoid Retrofit . . . . . †76-2307-3
10		X	Expansion Valve - R12 up to SN 840161415 . . . . .	†76-2062-3	39	X		Compressor 60 Hz 115V with Electrical Components . . . . . †76-2136-3
11		X	Expansion Valve - R12 After SN 840161415 . . . . .	†76-2109-3	<b>Electrical Components for Compressor AE4448A:</b>			
12	X	X	Expansion Valve - MP39 . . . . .	83-6755-9	40	X		Relay . . . . . See Page 7
13	X	X	Expansion Valve SS Bulb Clamp . . . . .	†89-3025-9	41	X		Overload Protector . . . . . See Page 7
14	X		Fan Motor 60 Hz 115V . . . . .	†24-0221-1	42	X		Start Capacitor . . . . . See Page 7
15		X	Fan Motor 60 Hz 115V Prior to SN 841061416 . . . . .	†24-1215-3	<b>Electrical Components for Compressor AK9434A:</b>			
16		X	Fan Motor After SN 841061416 . . . . .	†24-1237-3	43	X		Relay . . . . . See Page 7
17		X	Fan Blade After SN 841061416 . . . . .	24-1610-3	44	X		Overload Protector . . . . . See Page 7
18		X	Fan Blade Prior to SN 841061416 . . . . .	24-1605-3	45	X		Start Capacitor . . . . . See Page 7
19	X		Fan Blade . . . . .	24-0015-1	46		X	Compressor Assy. w/Electrical Components 115V 60 Hz . . . . . †76-2069-3
20	X	X	Fan Bracket . . . . .	†656861-4	<b>Electrical Components for Compressor RSN2-0050-IAA-258 60 Hz 115V:</b>			
21	X	X	Fan Cycling Control . . . . .	†23-0112-3	47	X		Relay . . . . . See Page 9
22	X	X	Hose Clamp, Plastic . . . . .	†56-5060-9	48	X		Overload Protector . . . . . See Page 9
23	X		Hot Gas Solenoid 115V 60 Hz (Danfoss) . . . . .	†76-3002-1	49	X		Start Capacitor . . . . . See Page 9
24		X	Hot Gas Valve Assembly with Coil 60 Hz 115V . . . . .	†24-0437-3	<b>Electrical Components for Compressor RRS4-0075-IAA-219 60 Hz 115V:</b>			
25		X	Hot Gas Valve Coil Only 60 Hz 115V Alco . . . . .	24-0436-3	50	X		Relay . . . . . See Page 9
26	x		Hot Gas Valve Coil Only 115V/60HZ Danfoss 000002048		51	X		Overload Protector . . . . . See Page 9
					52	X		Start Capacitor . . . . . See Page 9

**NOTE:** For 50 Hz or 60 Hz 220V parts see Page 12.

† Refer to Cross Reference Guide

## E0200 AND E0400 WATER-COOLED COMPRESSOR COMPARTMENT



1155

E0200		E0400		PART NO.	E0200		E0400		PART NO.	
1	X	X		Activating Pin Assembly . . . . .	76-2025-3	23	X	X	Water Tubing, 1/2" . . . . .	†44-2033-3
2				Bushing for Activating Pin . . . . .	†25-0208-9	24	X	X	Water Regulator . . . . .	†83-7206-9
3	X	X		Bin Switch . . . . .	†23-0111-9	25	X	X	Nut, Celcon. . . . .	50-1323-9
4	X	X		Bin Switch Bracket . . . . .	617531-4	26	X	X	Locknut. . . . .	†54-7503-9
5	X	X		Bin Switch Mylar Insulation . . . . .	619961-4	27	X	X	Receiver. . . . .	12-0003-1
6	X	X		Drier. . . . .	†89-3025-9	28	X	X	Barbed Tee . . . . .	13-9101-1
7	X			Expansion Valve - R12 . . . . .	†76-2062-3	29	X		Compressor 60 Hz 115V with Electrical Components. . . . .	†76-2136-3
7		X		Expansion Valve - R12 up to SN 840161415 . . . . .	†76-2062-3				<b>Electrical Components for Compressor AE4448A:</b>	
8		X		Expansion Valve - R12 after SN 840161415 . . . . .	†76-2109-3	30	X		Relay . . . . .	See Page 7
9	X	X		Expansion Valve MP39. . . . .	83-6755-9	31	X		Overload Protector . . . . .	See Page 7
10	X	X		Expansion Valve Stainless Steel Bulb Clamp. . . . .	†56-5052-9	32	X		Start Capacitor . . . . .	See Page 7
11	X	X		Plastic Clamp . . . . .	56-5010-1				<b>Electrical Components for Compressor AK9434A:</b>	
12	X			Hot Gas Solenoid 115V 60 Hz (Danfoss) . . . . .	†76-3002-1	33	X		Relay . . . . .	See Page 7
13	X			Hot Gas Solenoid 208/230V 50/60 Hz (Danfoss). . . . .	†76-3008-1	34	X		Overload Protector . . . . .	See Page 7
14		X		Hot Gas Valve Assembly with Coil 60 Hz 115V. . . . .	†24-0437-3	35	X		Start Capacitor . . . . .	See Page 7
15	X	X		Hot Gas Valve Coil Only 115V. . . . .	24-0436-3	36		X	Compressor Assy. w/Electrical Components 115V 60 Hz. . . . .	†76-2069-3
16	X	X		Hot Gas Valve Coil Only 220V . . . . .	†24-0448-3				<b>Electrical Components for Compressor RSN2-0050-IAA-258:</b>	
17	X	X		Screw 10-24 Slot Head (Pkg. of 12). . . . .	†52-0206-9	37	X		Relay . . . . .	See Page 9
18	X			Water Condenser up to SN 860861874 . . . . .	11-6506-1	38	X		Overload Protector . . . . .	See Page 9
18	X			Water Condenser after SN 860861874 . . . . .	†11-6509-7	39	X		Start Capacitor . . . . .	See Page 9
19		X		Water Condenser . . . . .	†11-6509-7	40	X		<b>Electrical Components for Compressor RRS4-0075-IAA-219:</b>	
20	X	X		Water Condenser Outlet Adapter. . . . .	87-0610-3	41	X		Relay . . . . .	See Page 9
21	X	X		Water Inlet Tubing, 1/4" OD. . . . .	44-2029-1	42	X		Overload Protector . . . . .	See Page 9
22	X	X		Water Inlet Fitting . . . . .	83-3424-3		X		Start Capacitor . . . . .	See Page 9

† Refer to Cross Reference Guide

## COMPRESSOR COMPONENTS FOR E0200

### 115V/60 HZ/1 PH

<b>Compressor Model Number</b>	<b>Start Relay</b>	<b>Overload</b>	<b>Start Capacitor</b>
Tecumseh AE4448A .....	85-0326-3	85-0328-3	85-0327-3
Tecumseh AK9434A .....	85-0374-3	85-0386-3	85-0371-3
Copeland RS40CIE-IAA-234 .....	† 15-0001-1	85-0546-3	85-0513-3

### 230V/50 HZ/1 PH

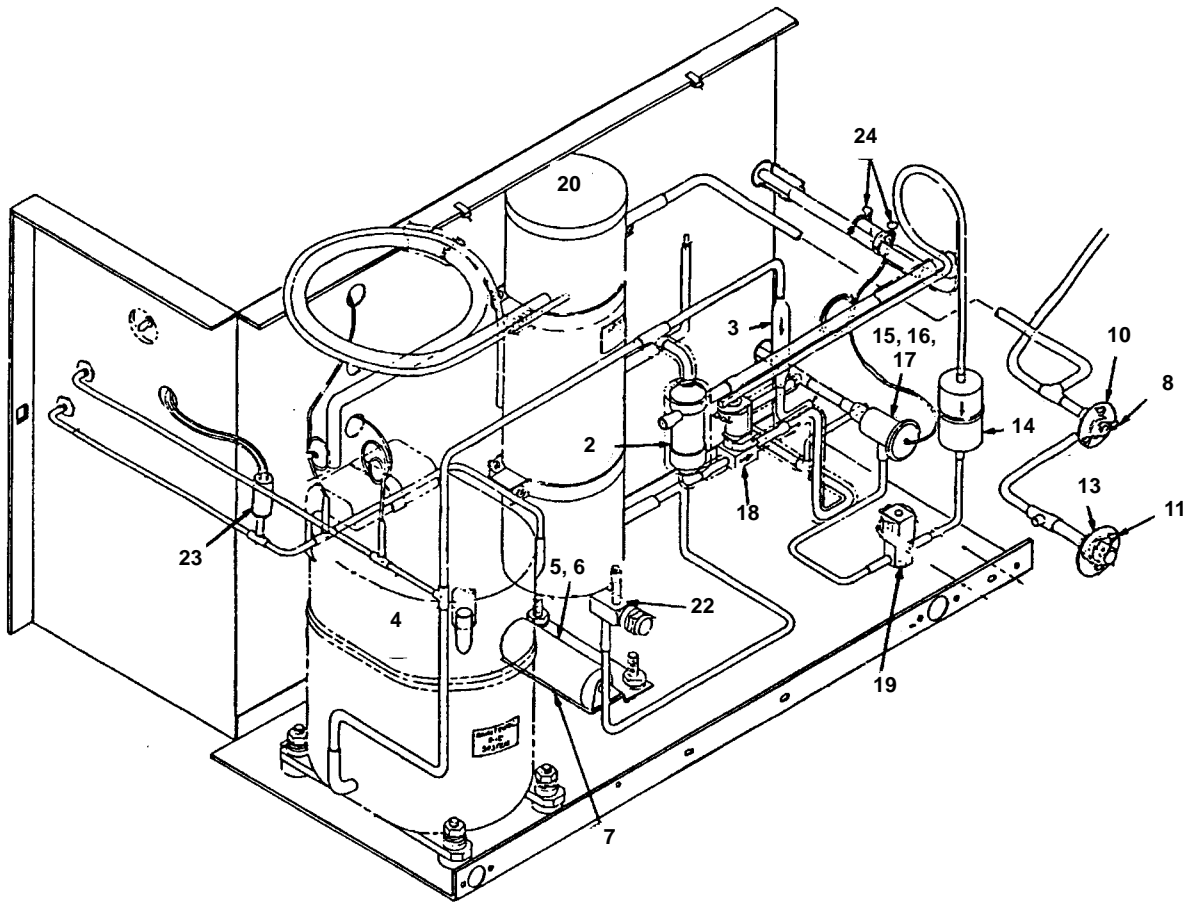
<b>Compressor Model Number</b>	<b>Start Relay</b>	<b>Overload</b>	<b>Start Capacitor</b>
Tecumseh AE2415A .....	85-0332-3	85-0334-3	85-0333-3
Tecumseh AK9441A .....	85-0376-3	- None -	85-0373-3
Copeland RS40CIE-IAZ-234 .....	85-0347-3	85-0548-3	85-0330-3

### 230V/60 HZ/1 PH

<b>Compressor Model Number</b>	<b>Start Relay</b>	<b>Overload</b>	<b>Start Capacitor</b>
Tecumseh AK9434A .....	85-0375-3	- None -	85-0372-3
Tecumseh AE2413A .....	85-0350-3	85-0351-3	85-0349-3

† Refer to Cross Reference Guide

## E0200 REMOTE MODEL E0400 REMOTE CUBER GROUP



1156

	<b>PART NO.</b>
1 Accumulator - Only Used up to SN 880962503 . . . . .	† No Longer Available
2 Harvest Cycle Reservoir - Used After SN 880962503 . . . . .	665861-4
3 Check Valve . . . . .	83-7314-3
4 Compressor* . . . . .	† 76-2069-3
5 Start Capacitor for Copeland* . . . . .	† 15-0002-1
6 Start Capacitor for Tecumseh . . . . .	85-0529-3
7 Mounting Bracket . . . . .	622501-4
8 Coupling, Aeroquip Male 5/8-18 . . . . .	† 83-6034-3
9 O-Ring 1/2" (For coupling 83-6035-3). . . . .	† 83-6012-9
10 Flange for Coupling . . . . .	83-6005-3
11 Coupling, Aeroquip Male 1-1/16-12 . . . . .	† 83-6035-3
12 O-Ring 3/8" (For coupling 83-6034-3). . . . .	† 83-6013-9
13 Flange for Coupling . . . . .	83-6006-3
14 Drier . . . . .	† 89-3027-9
15 Expansion Valve - R12 - Prior to SN 840161415 . . . . .	† 76-2062-3
16 Expansion Valve - R12 - After SN 840161415 . . . . .	† 76-2109-3
17 Expansion Valve - MP39 . . . . .	83-6755-9
18 Hot Gas Solenoid Valve . . . . .	† 24-0437-3
19 Liquid Line Solenoid . . . . .	24-0452-3
20 Receiver with Service Valves . . . . .	† 76-2958-3
21 Receiver Safety Plug (Not shown) . . . . .	† 628451-9
22 Service Valve Only . . . . .	† 83-7316-9
23 Suction Pressure Limiter Control . . . . .	23-0113-3
24 Stainless Steel Clamps . . . . .	† 56-5052-9

\*For components other than 115V 60 cycle see Page 12.

† Refer to Cross Reference Guide

## COMPRESSOR COMPONENTS FOR E0400

### 115V/60 HZ/1 PH

Compressor Model Number	Start Relay	Overload	Start Capacitor
Copeland RSN2-0050-IAA-258 .....	† 15-0001-1	† 15-0003-1	† 15-0002-1
Copeland RRS4-0075-IAA-219 .....	† 76-2332-3	85-0354-3	† 15-0002-1
Tecumseh AJA7461YXA .....	85-0528-3	85-0527-3	85-0529-3

### 230V/50 HZ/1 PH

Compressor Model Number	Start Relay	Overload	Start Capacitor
Copeland RSN2-0050-IAG-222 .....	† 15-0268-1	† 15-0273-1	85-0330-3
Copeland RSN2-0050-IAZ-204 .....	85-0347-3	† 15-0273-1	85-0330-3
Tecumseh AJ7465B .....	85-0382-3	- None -	85-0383-3
Tecumseh AJA7461YXC .....	85-0534-3	85-0533-3	85-0535-3

### 230V/60 HZ/1 PH

Compressor Model Number	Start Relay	Overload	Start Capacitor
Copeland RSN2-0050-IAV-715 .....	85-0347-3	85-0346-3	15-0269-1
Tecumseh AJ250GT-432-A4 .....	85-0531-3	85-0530-3	85-0532-3

† Refer to Cross Reference Guide

# AC0495 REMOTE CONDENSER PARTS LIST

## AC0495 REMOTE CONDENSER UP TO SN 900790000

Illustration 1

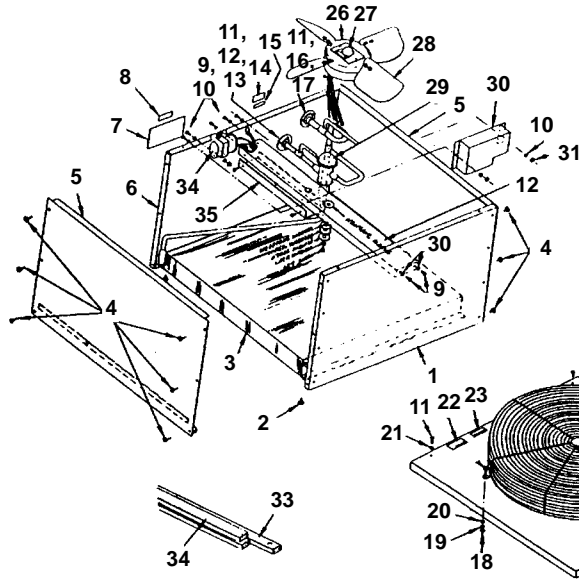
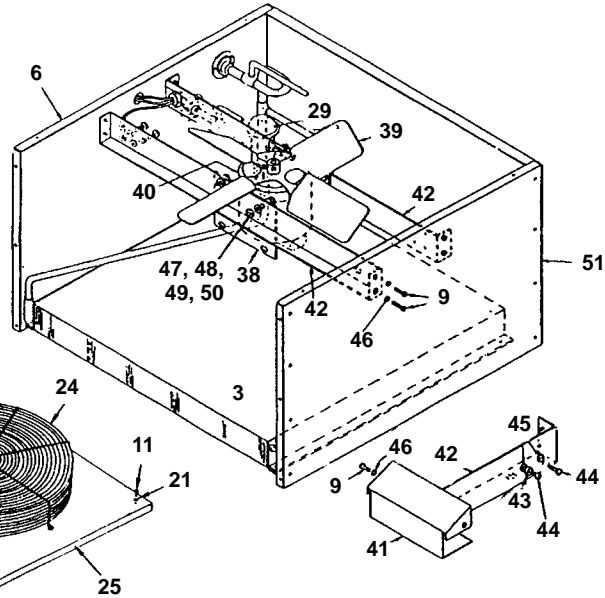


Illustration 2



1157

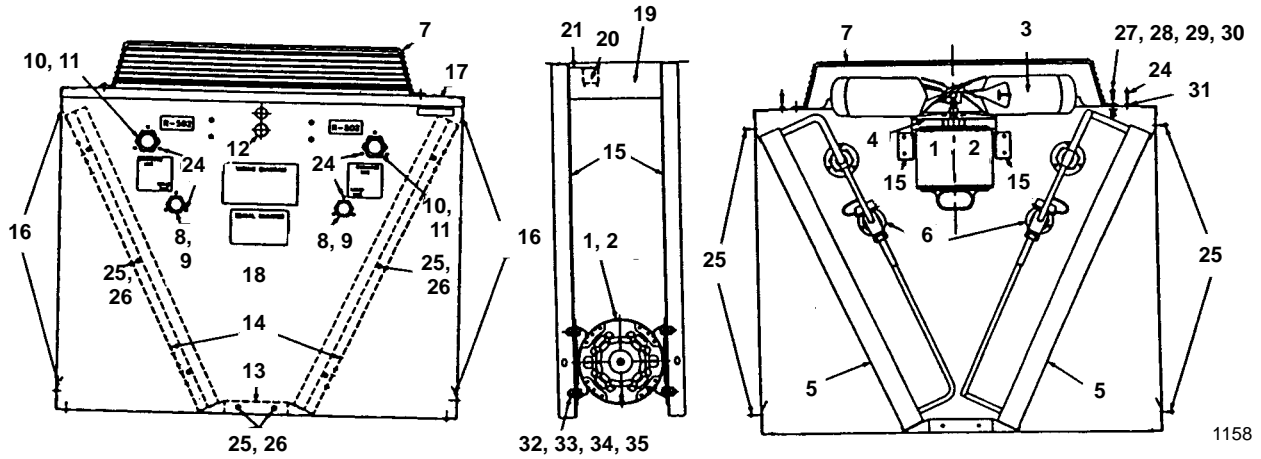
	PART NO.		PART NO.
1 Front Panel . . . . .	† 620471-4	20 Flatwasher 1/4" . . . . .	† 55-7304-9
2 8 x 1/2" Sheet Metal Screw Type B . . . . .	† 51-2464-9	21 Lockwasher #10 . . . . .	† 55-4464-9
3 Air Condenser . . . . .	† 88-5063-9	22 Label (Caution) . . . . .	81-3036-1
4 8 x 1/2" Sheet Metal Screw Type A . . . . .	† 51-2153-9	23 Label (Danger) . . . . .	† 81-3604-3
5 Right and Left Hand End Panel . . . . .	76-2231-3	24 Fan Grill . . . . .	34-0064-3
6 Rear Panel . . . . .	76-2275-3	25 Top Cover . . . . .	† 601775-1
7 Label (Wiring Diagram) . . . . .	81-3173-3	26 Fan Motor 60 Hz 115V . . . . .	† 76-2383-3
8 Label (Motor Maintenance) . . . . .	81-3174-3	27 Rain Shield . . . . .	No Longer Available
9 8-32 x 1/2" Machine Screw . . . . .	† 50-2624-9	28 Fan Blade (Set of 4) . . . . .	24-1607-3
10 Lockwasher #8 . . . . .	† 55-4459-9	29 Head Pressure Control R-12 . . . . .	76-2236-3
11 10-24 x 5/8" Screw . . . . .	† 52-0205-9	30 Electrical Cover . . . . .	656771-4
12 Mounting Flange 3/8" . . . . .	83-6005-3	31 Hex Nut 8-32 . . . . .	† 54-2906-9
13 Coupling 3/8" OD Tube . . . . .	† 83-6034-3	32 Fan Motor Bracket . . . . .	† 652882-4
14 Label (R-12 System) . . . . .	81-3165-3	33 Base Bracket (2 per) . . . . .	† 601768-1
15 Label (Made in U.S.A.) . . . . .	81-3027-1	34 Condenser Mounting Legs (4 per) . . . . .	† 601769-1
16 Mounting Flange 1/2" . . . . .	83-6006-3	35 Wire Guard . . . . .	606192-4
17 Coupling 1/2" OD Tube . . . . .	† 83-6035-3	36 Capacitor . . . . .	85-0360-3
18 1/4"-20 Hex Nut . . . . .	† 54-2952-9	37 Female Coupling Kit . . . . .	07-0062-3
19 Lockwasher Split 1/4" . . . . .	† 55-4511-9		

**AC-0495 after SN900790000**  
**or after Installation of 76-2383-3 Fan Motor Kit**  
**See Illustration 2 for Unique Items**

38 Fan Motor . . . . .	† 76-2942-3	45 Lockwasher #10 . . . . .	† 55-7320-9
39 Fan Blade . . . . .	24-1611-3	46 Lockwasher #8 . . . . .	† 55-4459-9
40 Rain Slinger . . . . .	24-1505-3	47 Lockwasher 5/16" Split . . . . .	† 55-7313-9
41 Electrical Cover . . . . .	† 601776-1	48 Flatwasher . . . . .	† 55-7309-9
42 Fan Mounting Bracket (Needs 2) . . . . .	662631-4	49 Hex Nut 5/16-18 . . . . .	† 54-2975-9
43 Cup Washer . . . . .	25-1025-3	50 Screw, 5/16-18 Hex Head . . . . .	† 50-3565-9
44 Screw 10-32 x 1/2" . . . . .	† 50-2701-9	51 Front Panel . . . . .	† 601772-1

† Refer to Cross Reference Guide

## REMOTE CONDENSER DC0495



	<b>PART NO.</b>
1 Fan Motor 115V 60 Hz . . . . .	† 76-2941-3
2 Fan Motor 230V 50/60 Hz . . . . .	† 76-2941-3
3 Fan Blade . . . . .	24-1611-3
4 Rain Slinger . . . . .	24-1505-3
5 Air Condenser . . . . .	† 88-5063-9
6 Headmaster Control - R-12 . . . . .	† 83-6804-9
7 Fan Guard . . . . .	34-0064-3
8 Male Coupling, 1-1/8" x 3/8 OD . . . . .	† 83-6036-3
9 Coupling Flange for 83-6036-3 . . . . .	83-6018-3
10 Male Coupling, 1-7/16 - 16 x 1/2 OD . . . . .	† 83-6037-3
11 Coupling Flange for 83-6037-3 . . . . .	83-6017-3
12 Hole Plug for 7/8" Hole . . . . .	43-0146-3
13 Base . . . . .	601779-1
14 Condenser Mounting Angle . . . . .	601777-1
15 Base Bracket for Fan Mounting . . . . .	† 600890-1
16 Support Bracket . . . . .	† 601778-1
17 Top Cover . . . . .	† 601788-1
18 Front Panel . . . . .	† 601794-1
19 Electrical Box Cover . . . . .	† 601776-1
20 Relay . . . . .	24-0819-3
21 Relay Mounting Bracket . . . . .	600000-1
22 Transformer (Not shown) . . . . .	24-1027-3
23 Electrical Junction Box (Not shown) . . . . .	25-1501-3
24 Screw, #10-24 x .62 . . . . .	† 52-0205-9
25 Screw, #8 x .50 . . . . .	† 51-2153-9
26 Lockwasher, #8 . . . . .	† 55-4459-9
27 Screw, .25 x .62 . . . . .	† 50-3345-9
28 Lockwasher .25 Split SS . . . . .	† 55-4511-9
29 Washer - Flat .25 SS . . . . .	† 55-7304-9
30 Nut .25-20 Steel Hex . . . . .	† 54-2952-9
31 Lockwasher #10 . . . . .	† 55-4464-9
32 Screw, .31-18 x .62 Hex Head . . . . .	† 50-3565-9
33 Nut .31-18 Steel Hex Head . . . . .	† 54-2975-9
34 Washer, Flat .31 ID . . . . .	† 55-7309-9
35 Lockwasher .31 Split Zinc . . . . .	55-7313-9
36 Back Panel (Not shown) . . . . .	† 601788-1

**NOTE:** Items 20, 21, 22 and 23 are used only when the optional K-00095 Relay/Transformer Kit has been installed.

## 50 HZ MODELS ONLY

(Use same parts as previously listed for standard E0200 and E0400 ice cubers, with the following exceptions.)

### CONTROL BOX

### PART NO.

#### E0200 E0400

- X Compressor Crankcase Pressure Regulator Valve . . . . . No Longer Available
- X Compressor 50 Hz 230V . . . . . † 76-2137-3

**Electrical Components for Compressor AE2415A:** See Page 7

**Electrical Components for Compressor AK9441A:** See Page 7

- X Compressor Assembly 50 Hz . . . . . † 76-2028-3

**COPELAND COMPONENTS:** See Page 9

**TECUMSEH COMPONENTS:** See Page 9

- X Fan Motor . . . . . † 24-1219-3
- X Fan Motor up to SN 841061416 . . . . . No Longer Available
- X Fan Motor After SN 841061416 . . . . . 24-1238-3
- X Hot Gas Solenoid 208/230V 50/60 Hz (Danfoss) . . . . . † 76-3008-1
- X Hot Gas Solenoid Valve Assembly . . . . . 24-0433-3
- X Hot Gas Solenoid Coil Only Alco. . . . . † 24-0448-3
- X Water Pump. . . . . † 76-2601-3
- X Unitized Sensor Board . . . . . † 76-2396-3
- X Sensor Module . . . . . Replace with † 76-2396-3
- X Transformer Board . . . . . Replace with † 76-2396-3

**60 Hz 220V Models**

- X Dump Solenoid Coil Only (Eaton Dole). . . . . 24-0464-3
- X Dump Valve (Alco). . . . . 000001768
- X Fan Motor . . . . . 24-1233-3
- X Fan Motor . . . . . 24-1234-3
- X Hot Gas Solenoid Valve 115V 60 Hz (Danfoss) . . . . . † 76-3008-1
- X Hot Gas Solenoid Valve Coil Only Alco. . . . . † 24-0448-3
- X Water Pump. . . . . † 76-2601-3
- X Compressor 60 Hz 220V AK9434A. . . . . † 76-2139-3

**Components for AK9434A Model Compressors:** See Page 7

**Components for AE2413A Model Compressors:** See Page 7

- X Compressor Assembly . . . . . † 76-2027-3

**Start Components:** See Page 9

- X Transformer Board 220V 60 Hz. . . . . Replace with † 76-2375-3
- X Sensor Module . . . . . Replace with † 76-2375-3
- X Unitized Sensor Board . . . . . † 76-2375-3

† Refer to Cross Reference Guide