

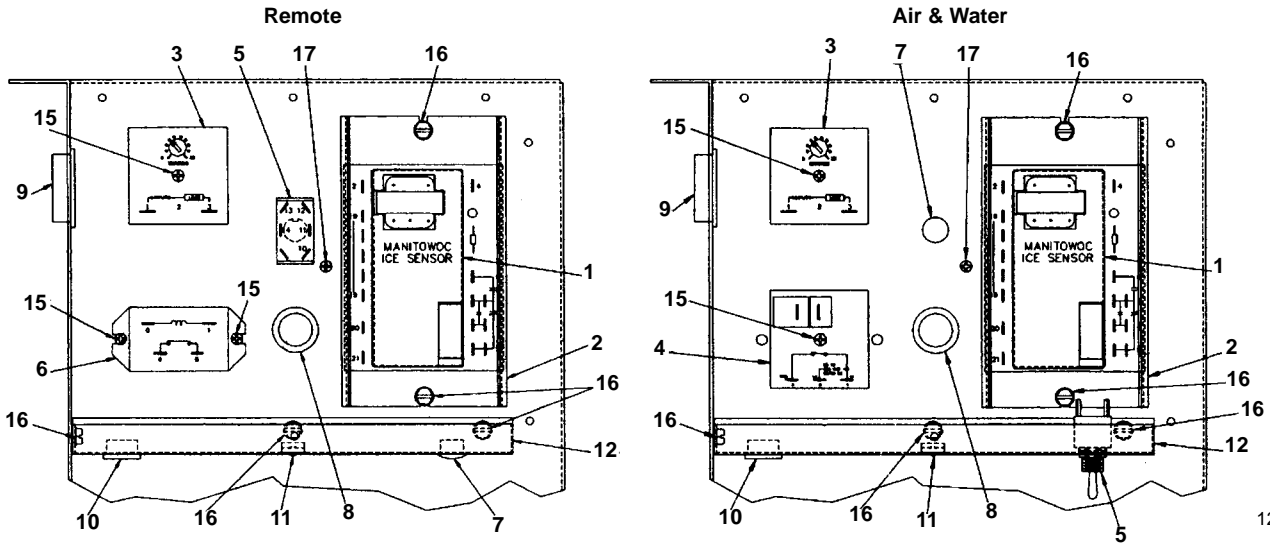


**Ice Machine Parts List for
Series G-0400 Cuber Models**

GR-0400A	GR-0401W
GD-0402A	GD-0403W
GY-0404A	GY-0405W
GR-0490N	GD-0492N
GY-0494N	R-502 System

Manufactured December 1990 through September 1992

G-0400 CONTROL BOX

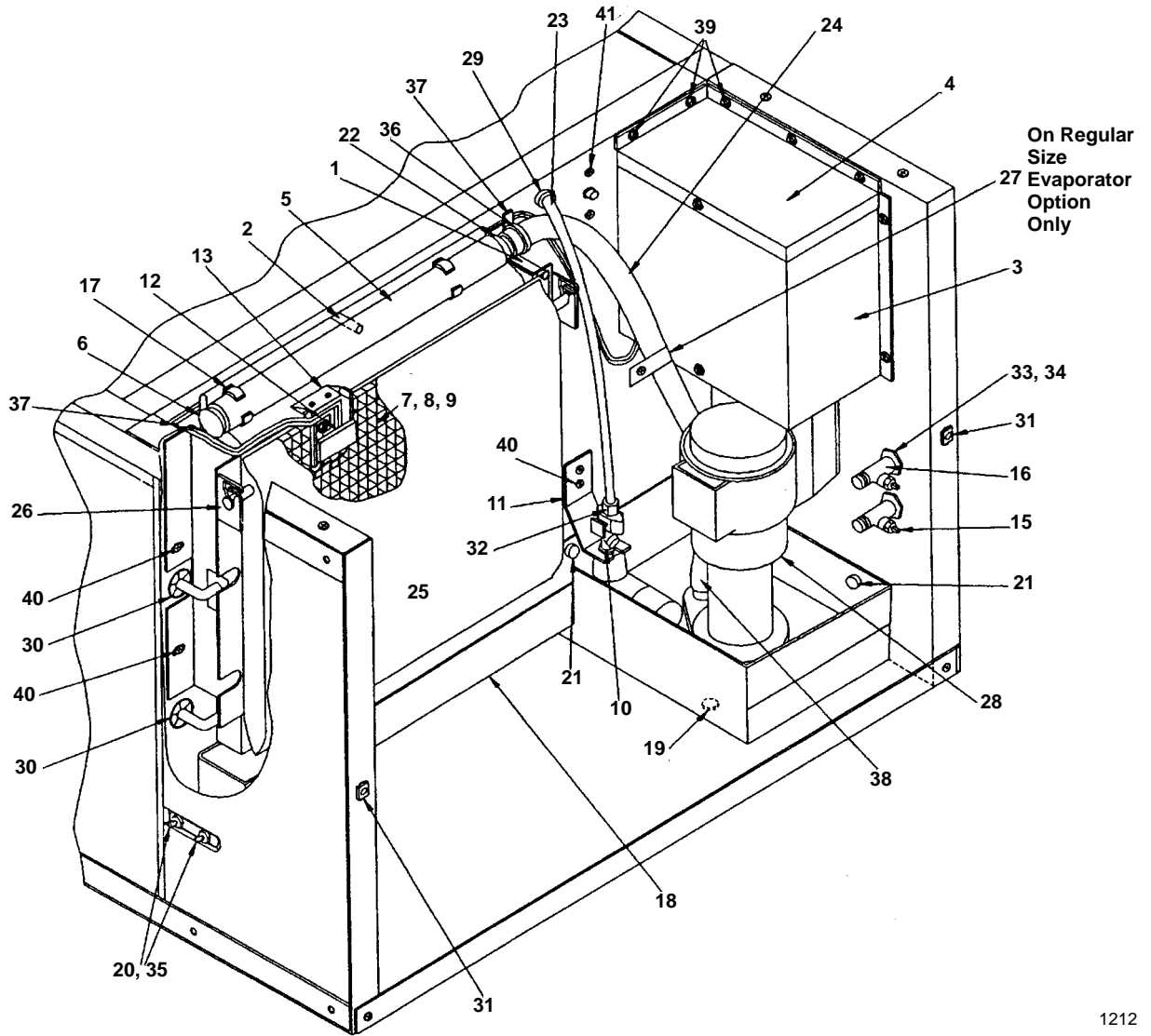


1211

	PART NO.
1 Unitized Sensor Board	† 76-2376-3
2 Mounting Channel	44-0846-3
3 Pump Delay Timer	† 24-0642-3
4 Delay Relay, 7 Second	† 24-0816-3
5 Toggle Switch	† 23-0084-9
6 Relay (Remote only)	† 24-0822-3
7 Hole Plug	† 43-0140-9
8 Bushing	† 25-0140-9
9 Bushing	† 25-0013-9
10 Bushing	† 25-0016-9
11 Nylon Spring Clip	† 56-5069-9
12 Control Box, Bottom Cover	631541-4
13 Control Box, Side Cover	631531-4
14 Control Box, Top Cover	631551-4
15 Screw, #8-32 x 1.25	† 50-2668-9
16 Screw, #10-24 x .50	† 52-0206-9
17 Screw, #10-24 x .50 Grounding	† 50-2932-9
18 Water Shield Used When Stacking	76-2388-3

† Refer to Cross Reference Guide

G-0400 EVAPORATOR COMPARTMENT

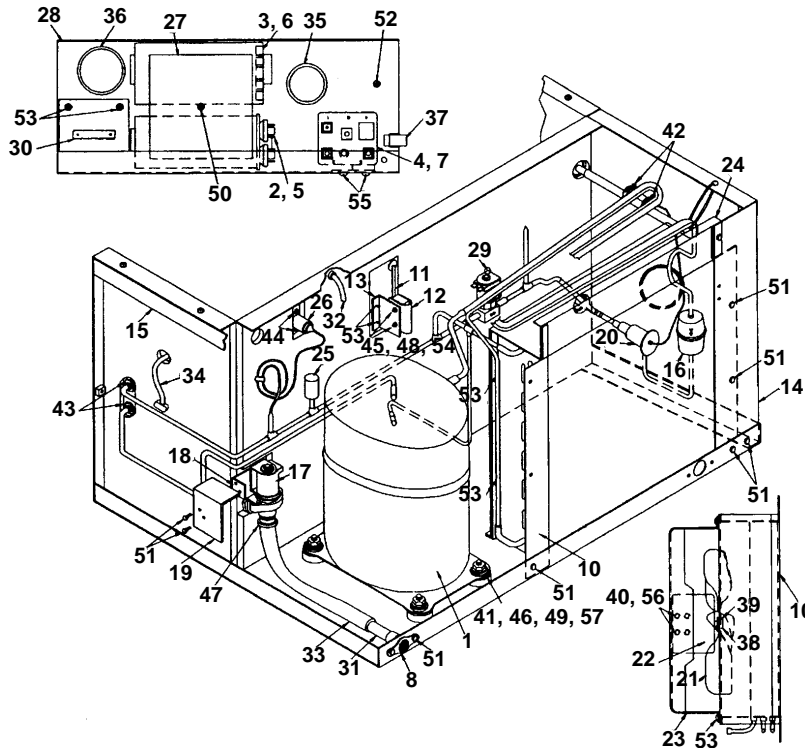


1212

PART NO.		PART NO.	
1	Activating Pin	76-2025-3	
2	Centering Pin	† 50-1313-9	
3	Control Box, Side Cover	631531-4	
4	Control Box, Top Cover	631551-4	
5	Distribution Tube Assembly	76-2153-3	
6	End Plug	† 44-0820-9	
7	Evaporator, Dice Cube	† 684321-9	
8	Evaporator, Half Dice Cube	† 684331-9	
9	Evaporator, Regular Cube	† 684311-9	
10	Float Valve	† 83-6904-9	
11	Float Valve Mounting Bracket	† 76-2140-3	
12	Ice Thickness Control	† 76-2061-3	
13	Ice Thickness Control Bracket	618581-4	
14	Process Valve Cover	No Longer Available	
15	Process Valve Stem Only	83-7317-3	
16	Process Valve With Stem	† 83-7310-9	
17	Spring Clip	† 56-5047-9	
18	Sump Trough	688721-4	
19	Sump Trough Plug	† 43-0062-9	
20	Sump Trough Support	† 43-0201-9	
21	Sump Trough Thumb Screw	† 53-0504-9	
22	Tube Seal	† 44-0821-9	
23	Tubing, Poly .25 OD	44-2029-1	
24	Tubing, Vinyl .50 ID	† 44-2033-3	
25	Water Curtain	† 76-1987-3	
26	Water Curtain Bracket	† 76-2177-3	
27	Water Flow Clamp	76-2054-3	
28	Water Pump	† 76-2306-3	
29	Bushing For 1/4" Tube	† 25-0011-9	
30	Bushing 13/16"	† 25-0010-9	
31	Cagenut #8-32	† 54-2910-9	
32	Compression Nut	† 56-5072-9	
33	Fiber Washer	† 55-7329-9	
34	Hex Locknut	† 54-7503-9	
35	Hex Nut, Nylon	† 54-2945-9	
36	Hose Clamp	† 56-5064-9	
37	Nylon Spring Clip	† 56-5069-9	
38	Reducing Tee	43-0057-3	
39	Screw, #10-24 x .50	† 52-0206-9	
40	Screw, #10-24 x .625	† 52-0205-9	
41	Screw, #8-32 x 1.00	† 50-2616-9	

† Refer to Cross Reference Guide

G-0400 AIR-COOLED

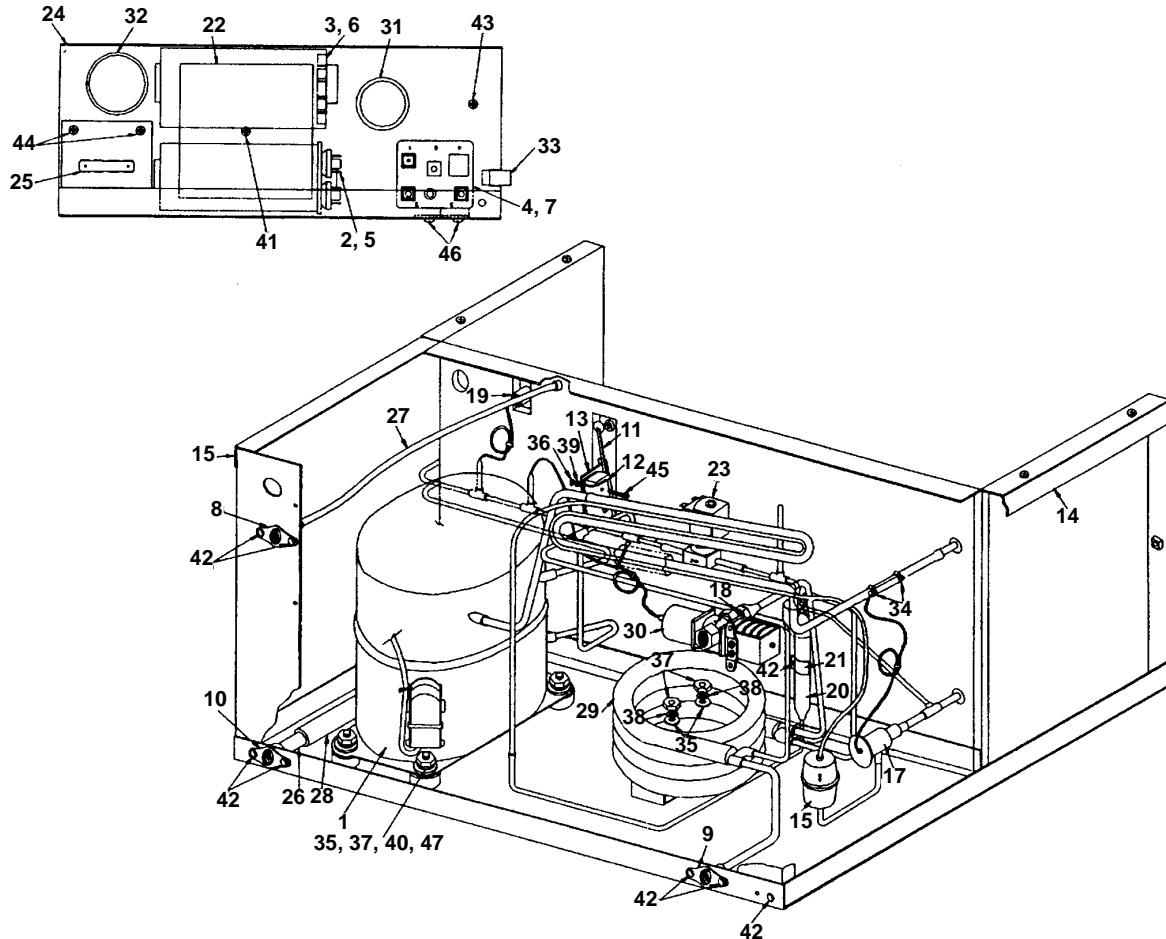


1213

	PART NO.		PART NO.
1 Compressor With All Components . . .	† 76-2810-3	27 Retaining Plate	No Longer Available
Tecumseh		28 Start Component Box	† 76-2414-3
2 Run Capacitor	† 85-0342-3	29 Solenoid Valve, Hot Gas	24-0486-3
3 Start Capacitor	85-0372-3	30 Terminal Board	25-1013-1
4 Start Relay (Tec AK162AT-032-G4) . .	† 20-0799-3	31 Tube, .63 OD	623451-4
Overload	85-0429-3	32 Tubing, Poly .25 OD	44-2029-1
4a Start Relay (Tec AK162AT-036-G4D)	20-0799-3	33 Tubing, Vinyl .50 ID	† 44-2033-3
Overload for AK170AT-039-A40	85-0555-3	34 Water Pump Lead	† 20-7311-3
Copeland		35 Bushing for 1.1875 Hole	† 25-0001-9
5 Run Capacitor	† 85-0341-3	36 Bushing for 1.50 Hole	† 25-0013-9
6 Start Capacitor	85-0314-3	37 Cable Clip	† 56-4808-9
7 Start Relay	85-0397-3	38 Fan Nut	† 54-7507-9
8 Adapter, Sump Drain	17-0602-1	39 Fiber Washer	† 55-7335-9
9 Air Baffle (Not shown)	† 76-2068-3	40 Flatwasher	† 55-0426-9
10 Air Condenser	88-5057-3	41 Flatwasher	† 55-7309-9
11 Bin Switch	† 23-0111-9	42 Hex Head Clamp	† 56-5052-9
12 Bin Switch Insulation	619961-4	43 Hex Locknut	† 54-7503-9
13 Bin Switch Mounting Bracket	617531-4	44 Hex Nut	† 54-2906-9
14 Corner Post Weldment LH	658001-4	45 Hex Nut	† 54-2878-9
15 Corner Post Weldment RH	666782-4	46 Hex Nut	† 54-3002-9
16 Drier	† 89-3025-9	47 Hose Clamp	† 56-5070-9
17 Dump Valve 115V	000001767	48 Lockwasher	† 55-4454-9
18 Dump Valve Mounting Bracket	626031-4	49 Mounting Grommet	† 15-0261-9
19 Dump Valve Shield	631791-4	50 Screw, #10-24 x 2.25	† 50-2726-9
20 Expansion Valve	† 76-2411-3	51 Screw, #10-24 x .50	† 52-0206-9
21 Fan Blade	24-1610-3	52 Screw, #10-24 x .50 Grounding	† 50-2932-9
22 Fan Motor 115V 60 Hz	† 24-1237-3	53 Screw, #10-24 x .63	† 52-0205-9
23 Fan Motor Bracket	688781-4	54 Screw, #6-32 x 1.00	† 50-2329-9
24 Fan Shroud	† 76-2458-3	55 Screw, #8-32 x .25 SS	† 50-2672-9
25 Fan Pressure Control	23-0115-3	56 Screw, #8-36 x .44	† 50-2559-9
26 High Pressure Control	† 23-5524-3	57 Sleeve	† 15-0259-9

† Refer to Cross Reference Guide

G-0400 WATER-COOLED

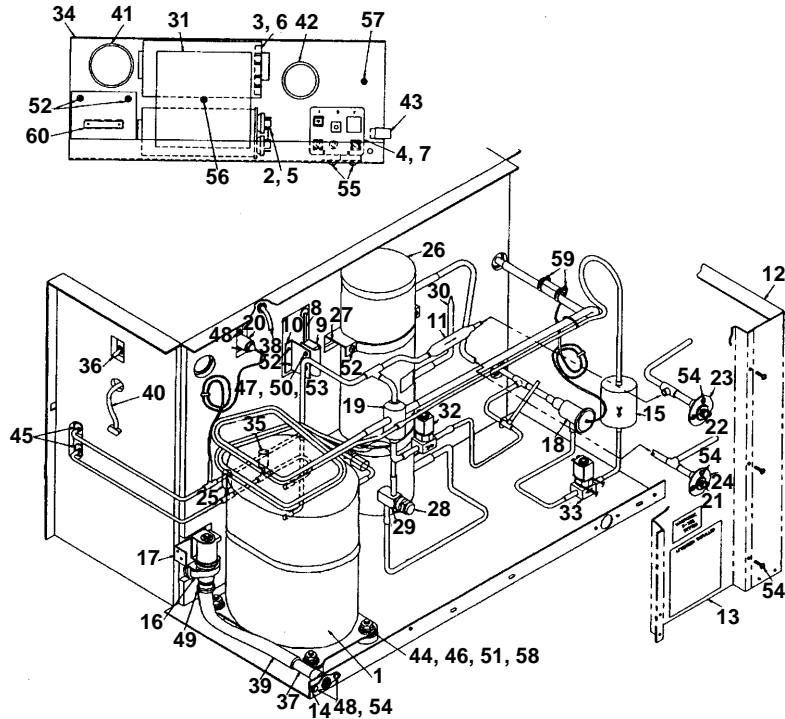


1214

	PART NO.	PART NO.
1	Compressor With All Components . . . † 76-2810-3	22 Retaining Plate No Longer Available
	Tecumseh:	23 Solenoid Valve, Hot Gas 24-0486-3
2	Run Capacitor † 85-0342-3	24 Start Component Box † 76-2414-3
3	Start Capacitor 85-0372-3	25 Terminal Board 25-1013-1
4	Start Relay (Tec AK162AT-032-G4) . . † 20-0799-3	26 Tube .63 OD 623451-4
	Overload 85-0429-3	27 Tubing, Poly .25 OD 44-2029-1
4a	Start Relay (Tec AK162AT-036-G4D) . 20-0799-3	28 Tubing, Vinyl .50 ID † 44-2033-3
	Overload for AK170AT-039-A40 85-0555-3	29 Water Condenser † 11-6509-7
	Copeland:	30 Water Regulator Valve 83-7206-3
5	Run Capacitor † 85-0341-3	31 Bushing For 1.1875 Hole † 25-0001-9
6	Start Capacitor 85-0314-3	32 Bushing For 1.50 Hole † 25-0013-9
7	Start Relay 85-0397-3	33 Cable Clip † 56-4808-9
8	Adapter, Water Inlet 600242-1	34 Clamp w/Thumbscrew † 56-5052-9
9	Adapter, Condenser Drain 87-0610-3	35 Flatwasher † 55-7309-9
10	Adapter, Sump Drain 17-0602-1	36 Hex Nut † 54-2878-9
11	Bin Switch † 23-0111-9	37 Hex Nut † 54-3002-9
12	Bin Switch Insulation 619961-4	38 Lockwasher † 55-4514-9
13	Bin Switch Mounting Bracket 617531-4	39 Lockwasher † 55-4454-9
14	Corner Post LH 658001-4	40 Mounting Grommet † 15-0261-9
15	Corner Post RH 666782-4	41 Screw, #10-24 x 2.25 † 50-2726-9
16	Drier † 89-3025-9	42 Screw, #10-24 x .50 † 52-0206-9
17	Expansion Valve † 76-2411-3	43 Screw, #10-24 x .50 Grounding † 50-2932-9
18	Half Union Coupling 83-3202-3	44 Screw, #10-24 x .625 † 52-0205-9
19	High Pressure Control † 23-5524-3	45 Screw #6-32 x 1.00 † 50-2329-9
20	Receiver 12-0003-1	46 Screw, #8-32 x .25 SS † 50-2672-9
21	Receiver Bracket 632511-4	47 Sleeve † 15-0259-9

† Refer to Cross Reference Guide

G-0400 REMOTE

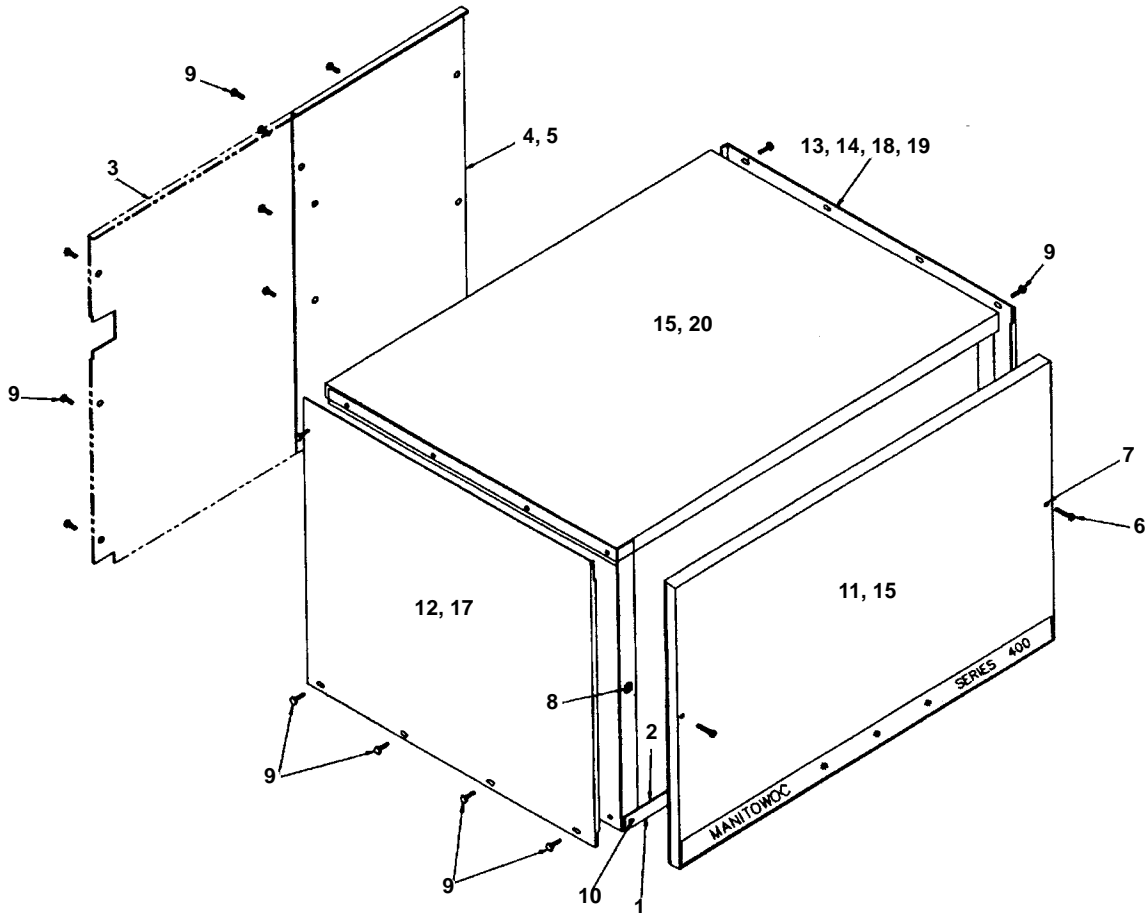


1215

	PART NO.		PART NO.
1 Compressor, 115V 60 Hz	† 76-2810-3	28 Receiver Service Valve Cap Only	56-5075-3
Tecumseh:		29 Receiver Service Valve w/Cap	† 83-7316-9
2 Run Capacitor	† 85-0342-3	30 Receiver Soft Safety Plug	† 628451-9
3 Start Capacitor	85-0372-3	31 Retaining Plate	No Longer Available
4 Start Relay (Tec AK162AT-032-G4) . .	† 20-0799-3	32 Solenoid Valve, Hot Gas	24-0486-3
Overload	85-0429-3	33 Solenoid Valve, Liquid Line	
4a Start Relay (Tec AK162AT-036-G4D) .	20-0799-3	115V 60 Hz (Danfoss)	† 76-3002-1
Overload for AK170AT-039-A40	85-0555-3	34 Start Component Box	† 76-2414-3
Copeland:		35 Suction Pressure Switch	No Longer Available
5 Run Capacitor	† 85-0341-3	36 Toggle Switch	† 23-0084-9
6 Start Capacitor	85-0314-3	37 Tube, .63 OD x 2	623451-4
7 Start Relay	85-0397-3	38 Tubing, Poly .25 OD	44-2029-1
8 Bin Switch	† 23-0111-9	39 Tubing, Vinyl .50 ID	† 44-2033-3
9 Bin Switch Insulation	619961-4	40 Water Pump Lead	† 20-7311-3
10 Bin Switch Mounting Bracket	617531-4	41 Bushing For 1.50 Hole	† 25-0013-9
11 Check Valve	† 83-7314-9	42 Bushing For 1.1875 Hole	† 25-0001-9
12 Corner Post Weldment LH	658001-4	43 Cable Clip	† 56-4808-9
13 Coupling Mounting Post	661801-4	44 Flatwasher	† 55-7309-9
14 Drain Adapter	17-0602-1	45 Hex Locknut	† 54-7503-9
15 Drier	† 89-3027-9	46 Hex Nut	† 54-3002-9
16 Dump Valve 115V	000001767	47 Hex Nut	† 54-2878-9
17 Dump Valve Mounting Bracket	626031-4	48 Hex Nut	† 54-2906-9
18 Expansion Valve	† 76-2411-3	49 Hose Clamp	† 56-5070-9
19 Harvest Cycle Limiter	89-0043-3	50 Lockwasher	† 55-4454-9
20 High Pressure Control	† 23-5524-3	51 Mounting Grommet	† 15-0261-9
21 Male Coupling, 1-1/8-12 THD	† 83-6036-3	52 Screw, #10-24 x .625	† 52-0205-9
22 Male Coupling, 1-7/16-16 THD	† 83-6037-3	53 Screw, #6-32 x 1.00	† 50-2329-9
23 Male Coupling Flange	83-6017-3	54 Screw, #24 x .50	† 52-0206-9
24 Male Coupling Flange	83-6018-3	55 Screw, #8-32 x .25 SS	† 50-2672-9
25 Pressure Control	23-5527-3	56 Screw, #10-24 x 2.25	† 50-2726-9
26 Receiver	† 76-2958-3	57 Screw, #10-24 x .50 Grounding	† 50-2932-9
27 Receiver Mounting Bracket	665991-4	58 Sleeve	† 15-0259-9
		59 Clamp With Thumbscrew	† 56-5052-9
		60 Terminal Board	25-1013-1

† Refer to Cross Reference Guide

G-0400 OUTER PANELS



1216

COMMON PARTS

	PART NO.
1 Front Support Bulkhead	† 658041-9
2 Front Support Angle	No Longer Available
3 Back Panel, Water	† 659051-4
4 Back Panel, Air.	617872-4
5 Back Panel, Remote	661372-4
6 Screw, #8-32 x 1.50	† 50-2668-9
7 O Ring	† 37-1819-9
8 Cagenut	† 54-2910-9
9 Screw, #10-24 x .50	† 52-0206-9
10 Screw, #10-24 x .50	† 52-0209-9

FAWN

11 Front Panel, Textured Fawn.	† 76-1992-3
12 Side Panel, LH.	† 686161-9
13 Side Panel, RH, Air and Water.	† 685771-9
14 Side Panel, RH, Remote	† 76-2119-3
15 Top Cover.	683821-4
Fawn Touch Up Paint, .6 Oz. Bottle	94-0162-3
Fawn Touch Up Paint, Aerosol Can	94-0093-1

STAINLESS STEEL

16 Front Panel.	† 76-1993-3
17 Side Panel, LH.	† 686163-9
18 Side Panel, RH, Air and Water.	† 76-2547-3
19 Side Panel, RH, Remote	† 76-2547-3
20 Top Cover.	683823-4

† Refer to Cross Reference Guide

G-0400 CYCLE APPLICATIONS

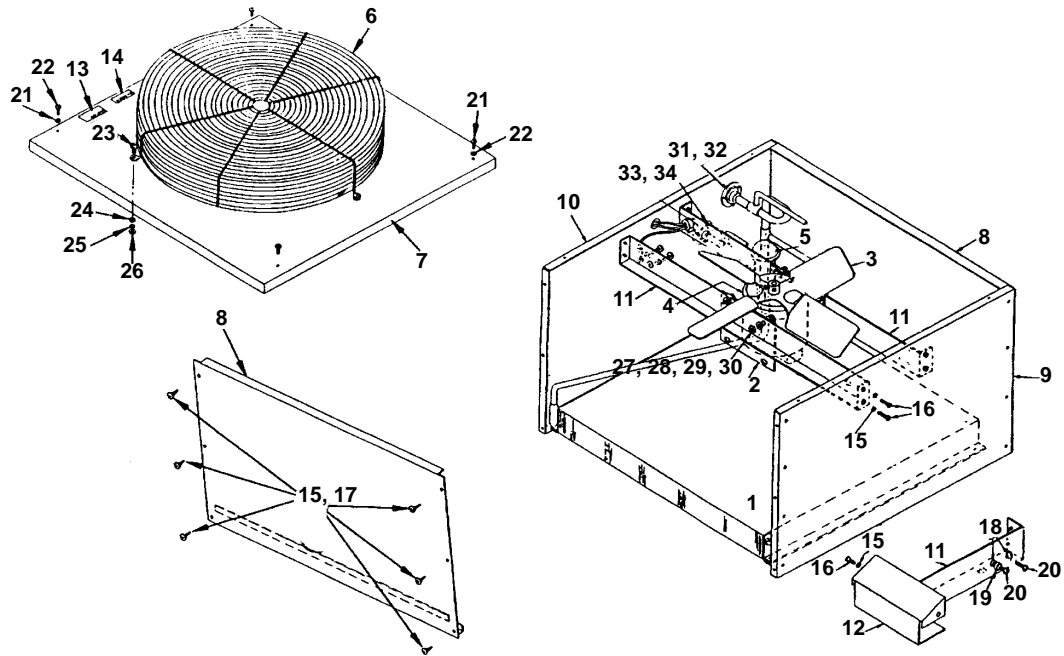
50 CYCLE APPLICATION

	PART NO.
Compressor	† 76-2811-3
Start Capacitor	85-0372-3
Start Relay	85-0406-3
Run Capacitor	85-0400-3
Overload for AK94585	85-0430-3
Overload for AK170JT-039-A4D	85-0557-3
Dump Valve 208/230V	000001768
Fan Motor	24-1238-3
Power Cord	20-3073-3
Strain Relief	25-1202-3
Reducing Nipple .75 x .50	87-0038-3
Reducing Nipple .75 x .38	87-0039-3
Solenoid, Hot Gas	No Longer Available
Terminal Block	25-1023-3
Toggle Switch	23-0119-3
Unitized Sensor Assembly	† 76-2396-3
Water Pump	† 76-2601-3

G-0400 230V/60 CYCLE APPLICATION

Compressor	† 76-2812-3
Run Capacitor	85-0400-3
Start Relay for AK9458J	† 76-2610-3
Start Relay for AK170ET-039-A4D	85-0455-3
Start Capacitor	85-0372-3
Overload for AK9458J	85-0431-3
Overload for AK170ET-039-A4D	85-0556-3
Fan Motor	24-1234-3
Unitized Sensor Module	† 76-2375-3

REMOTE CONDENSER AC0496

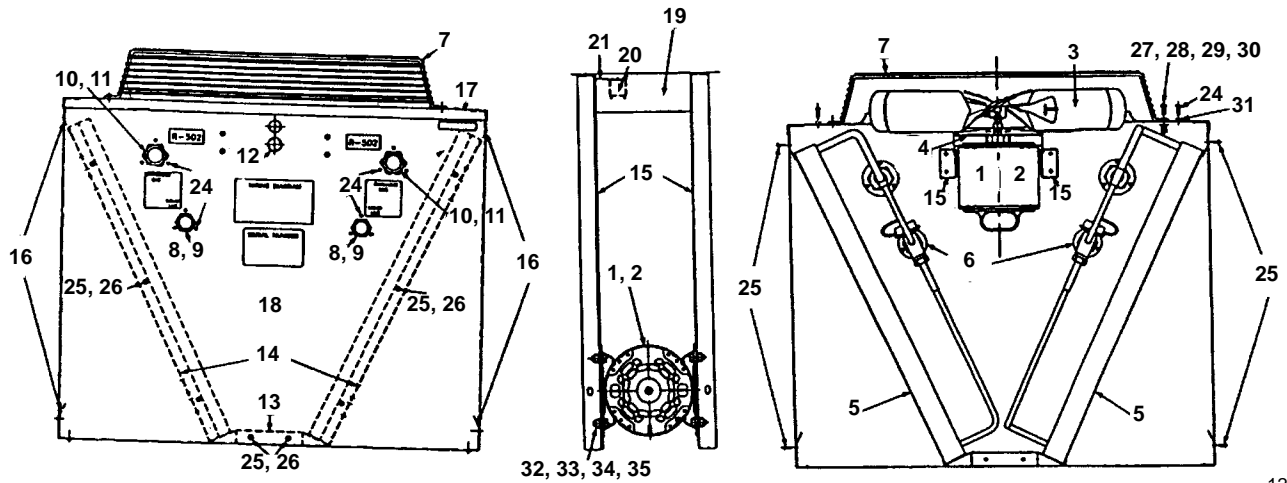


1218

	PART NO.
1 Air Condenser	† 88-5063-9
2 Fan Motor 115V 60 Hz	† 76-2942-3
Fan Motor 230V 50/60 Hz	† 76-2941-3
3 Fan Blade	24-1611-3
4 Rain Slinger	24-1505-3
5 Headmaster Control R-502	† 83-6806-9
6 Fan Grill	34-0064-3
7 Top Cover	† 601775-1
8 Right and Left Hand End Panel	76-2231-3
9 Front Panel	† 601772-1
10 Rear Panel Weldment	† 76-2261-3
11 Fan Mounting Brackets (Uses 2)	† 601768-1
12 Electrical Cover	† 601776-1
13 Label - Caution	81-3036-1
14 Label - Danger	† 81-3604-3
15 Lockwasher #8	† 55-4459-9
16 Screw, #8-32 x 1/2	† 50-2624-9
17 Screw, #8 x 1/2	† 51-2153-9
18 Lockwasher #10	† 55-7320-9
19 Cup Washer	25-1025-3
20 Screw, #10-32 x 1/2	† 50-2701-9
21 Lockwasher #10	† 55-4464-9
22 Screw, #10-24 x 5/8	† 52-0205-9
23 Screw, 1/4-20 x 5/8	† 50-3345-9
24 Flatwasher 1/4"	† 55-7304-9
25 Lockwasher 1/4" Split	† 55-4511-9
26 Hex Nut, 1/4-20	† 54-2952-9
27 Lockwasher 5/16 Split	† 55-7313-9
28 Flatwasher	† 55-7309-9
29 Hex Nut 5/16-18	† 54-2975-9
30 Screw, 5/16-18 Hex Head	† 50-3565-9
31 Coupling 1/2 OD Tube	† 83-6037-3
32 Mounting Flange for 83-6037-3	83-6017-3
33 Coupling 3/8 OD Tube	† 83-6036-3
34 Mounting Flange for 83-6036-3	83-6018-3

† Refer to Cross Reference Guide

REMOTE CONDENSER DC0496



1219

	PART NO.
1 Fan Motor 115V 60 Hz	† 76-2942-3
2 Fan Motor 230V 50/60 Hz.	† 76-2941-3
3 Fan Blade	24-1611-3
4 Rain Slinger	24-1505-3
5 Air Condenser DC-0496A	† 88-5063-9
6 Headmaster Control - R-502.	† 83-6806-9
7 Fan Guard.	34-0064-3
8 Male Coupling, 1-1/8 x 3/8 OD	† 83-6036-3
9 Coupling Flange for 83-6036-3.	83-6018-3
10 Male Coupling, 1-7/16 - 16 x 1/2 OD	† 83-6037-3
11 Coupling Flange for 83-6037-3.	83-6017-3
12 Hole Plug for 7/8" Hole	43-0146-3
13 Base	601779-1
14 Condenser Mounting Angle	601777-1
15 Base Bracket for Fan Mounting	† 601768-1
16 Support Bracket	† 601778-1
17 Top Cover	601789-1
18 Front Panel	† 601794-1
19 Electrical Box Cover	† 601776-1
20 Relay.	24-0819-3
21 Relay Mounting Bracket	600000-1
22 Transformer (Not shown)	24-1027-3
23 Electrical Junction Box (Not shown)	25-1501-3
24 Screw, #10-24 x .62	† 52-0205-9
25 Screw, #8 x .50	† 51-2153-9
26 Lockwasher, #8.	† 55-4459-9
27 Screw, .25 x .62.	† 50-3345-9
28 Lockwasher .25 Split SS.	† 55-4511-9
29 Washer - Flat .25 SS.	† 55-7304-9
30 Nut .25-20 Steel Hex.	† 54-2952-9
31 Lockwasher #10	† 55-4464-9
32 Screw, .31-18 x .62 Hex Head	† 50-3565-9
33 Nut .31-18 Steel Hex Head.	† 54-2975-9
34 Washer, Flat .31 ID.	† 55-7309-9
35 Lockwasher .31 Split Zinc.	† 55-7313-9
36 Back Panel (Not shown)	† 601788-1

NOTE: Items 20, 21, 22, and 23 are used only when the optional K00095 Relay/Transformer Kit has been installed.

† Refer to Cross Reference Guide