



Ice Machine Parts List for Series G-0800 Cuber Models

GR-0800A

GD-0803W

GD-0802A

GY-0804A

GD-0892N

GY-0894N

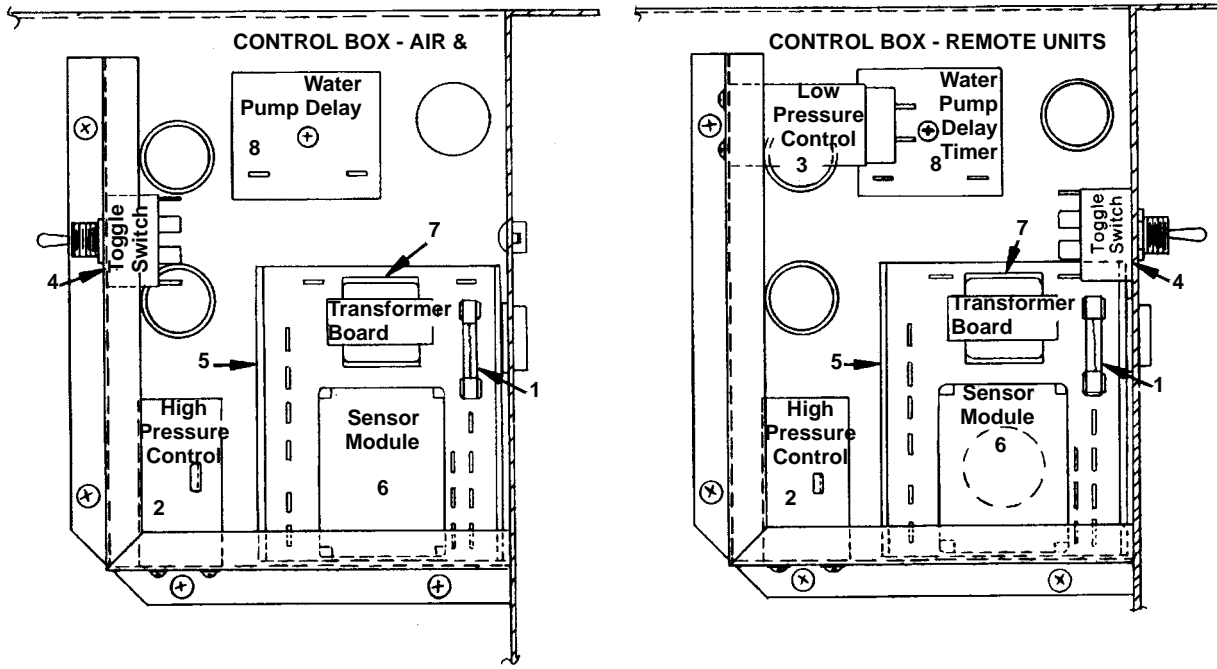
GY-0805W

R-502 System

GR-0801W

Manufactured October 1984 through August 1992

G-0800 CONTROL BOX



1231

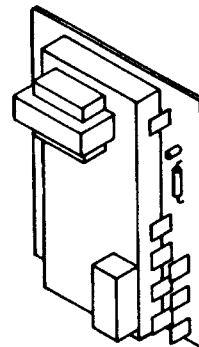
CONTROL BOX

	PART NO.
1 Fuse	† 25-1037-9
2 High Pressure Control Up to SN 870860000	23-5521-3
2a High Pressure Control After SN 870860000	† 23-5524-3
3 Low Pressure Control Up to SN 870860000	No Longer Available
3a Low Pressure Control After SN 870860000	23-5527-3
4 Main Toggle Switch	† 23-0084-9
5 Mounting Track for Transformer Board	44-0801-3
6 Sensor Module Use	† 76-2375-3
7 Transformer Board 230V Use	† 76-2375-3
8 Timer - Pump Delay Up to SN 870960837 (Using siphon)	† 24-0642-3
8a Interval Timer After SN 870960837 (Using dump valve)	† 24-0643-3
9 Water Shield Used When Stacking	76-2388-3

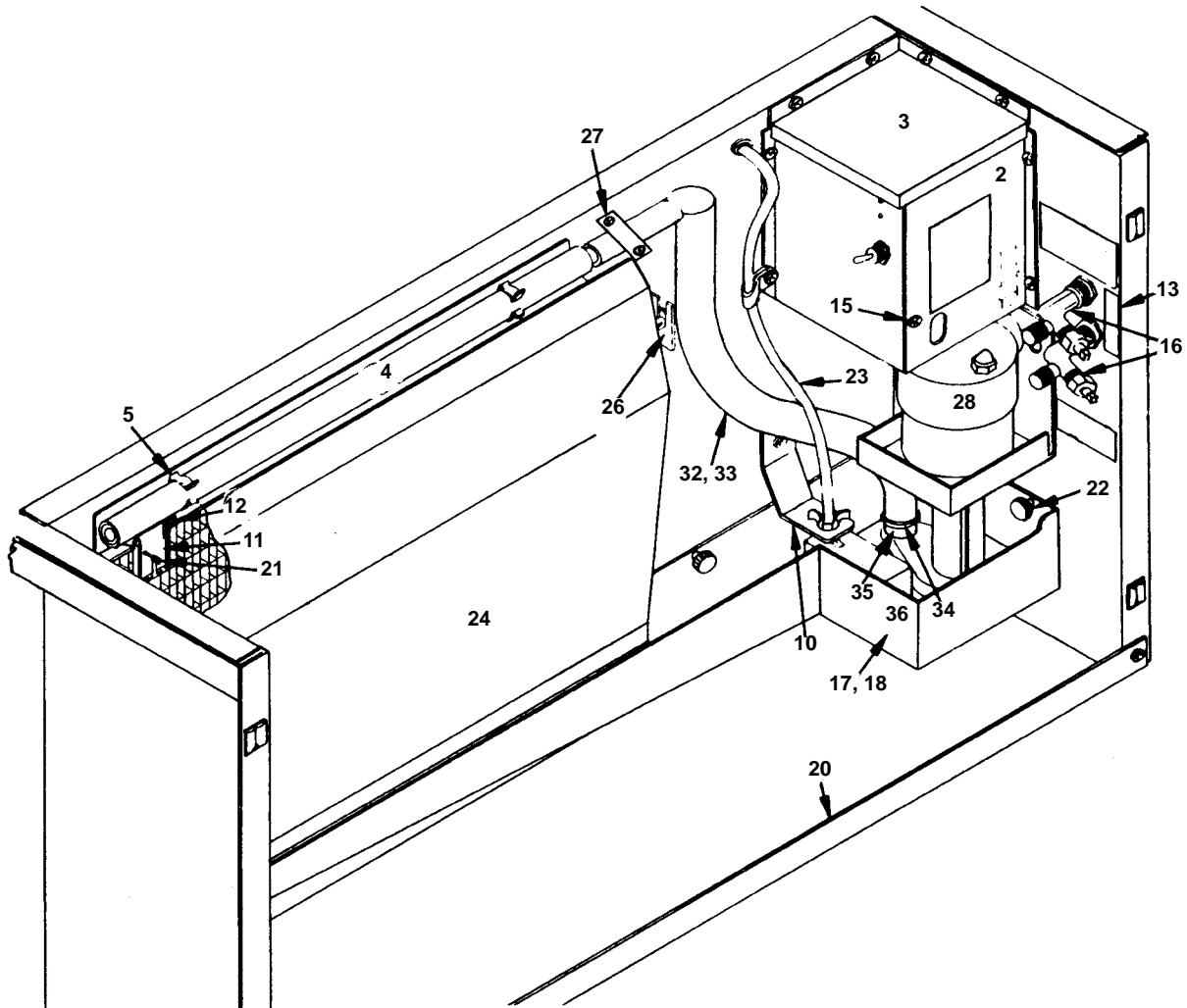
Unitized sensor board is used to replace both the transformer board and sensor module † 76-2375-3

UNITIZED SENSOR BOARD

#76-2375-3



G-0800 WATER DISTRIBUTION



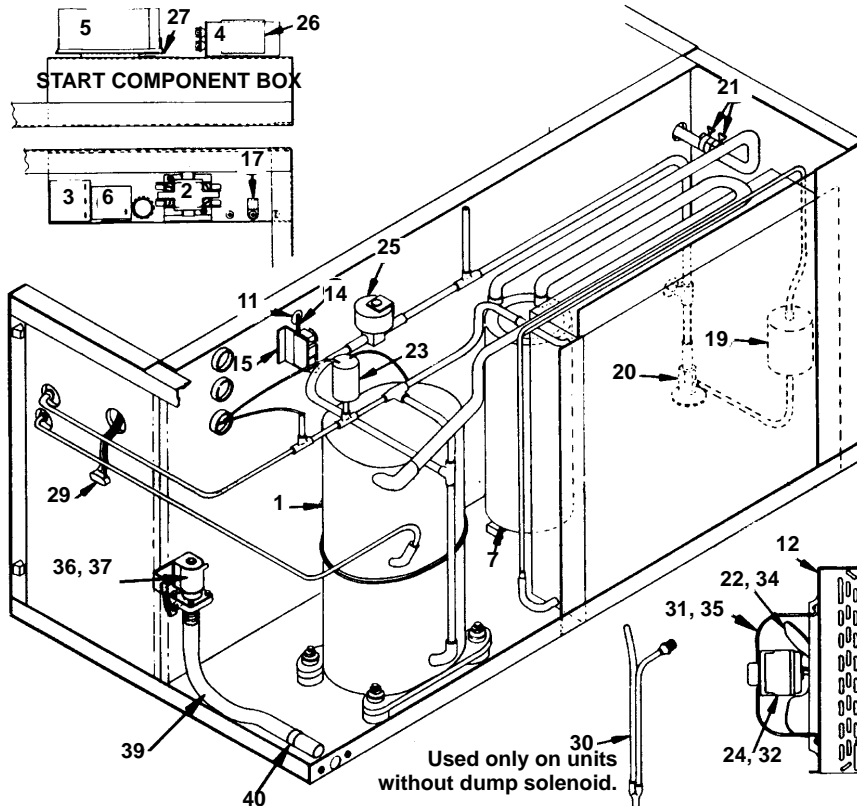
1232

EVAPORATOR AND WATER DISTRIBUTION

	PART NO.		PART NO.		
1	Activating Pin Assembly	76-2025-3	21	Thumb Screw for Ice Thickness Control	† 50-1210-9
2	Control Box Front Cover	† 76-2150-3	22	Thumb Screw (Mounting sump trough)	† 53-0504-9
3	Control Box Top Cover	† 660771-4	23	Tubing, Polyflow (Fresh water inlet to float valve)	44-2029-1
4	Distribution Tube Assembly	76-2162-3	24	Water Curtain	† 76-2007-3
5	Distribution Tube Spring Clip	† 56-5047-9	25	Water Curtain Hanger (White plastic)	† 56-5045-9
6	Evaporator, Regular Cube	† 76-2071-9	26	Water Curtain Side Bracket (Set of left and right hand)	† 76-2177-3
7	Evaporator, Dice Cube	† 76-2072-9	27	Water Flow Clamp Assembly	76-2054-3
8	Evaporator, Half Dice Cube	† 76-2073-9	28	Water Pump 50/60 Hz 220V	† 76-2601-3
9	Float Valve	† 83-6905-9	29	Water Inlet Strainer	† 12-6003-3
10	Float Valve Bracket	† 76-2140-3	30	Water Pump Lead with Female Plug	† 20-7311-3
11	Ice Thickness Control	† 76-1996-3	31	Water Siphon Tube Assembly (See Page 4)	76-2091-3
12	Ice Thickness Control - Bracket	618581-4	32	Pump Discharge Tube Assembly (Siphon)	† No longer Available
13	Label (For high and low side service valve)	† 81-3147-3	33	Pump Discharge Tube Assembly (Dump valve)	† 44-2033-3
14	Nylon Nut (For mounting 43-0201-3)	† 54-2945-9	34	Pump Discharge Tube Clamp	† 56-5053-9
15	Screw 10-24 Phillips Head (Pkg. of 12)	† 52-0205-9	35	Reducer Assembly	76-2377-3
16	Service Valve, High and Low Side	† 83-7310-9	36	Barbed Tee	83-9102-3
17	Sump Trough (Units using siphon)	684234-4			
18	Sump Trough (Units using dump valve)	† 687791-9			
19	Overflow Tube in Sump Trough	44-2056-3			
20	Sump Trough Support Pin	† 43-0201-9			
	Support Angle, Front	† 658031-9			

† Refer to Cross Reference Guide

G-0800 AIR-COOLED



1233

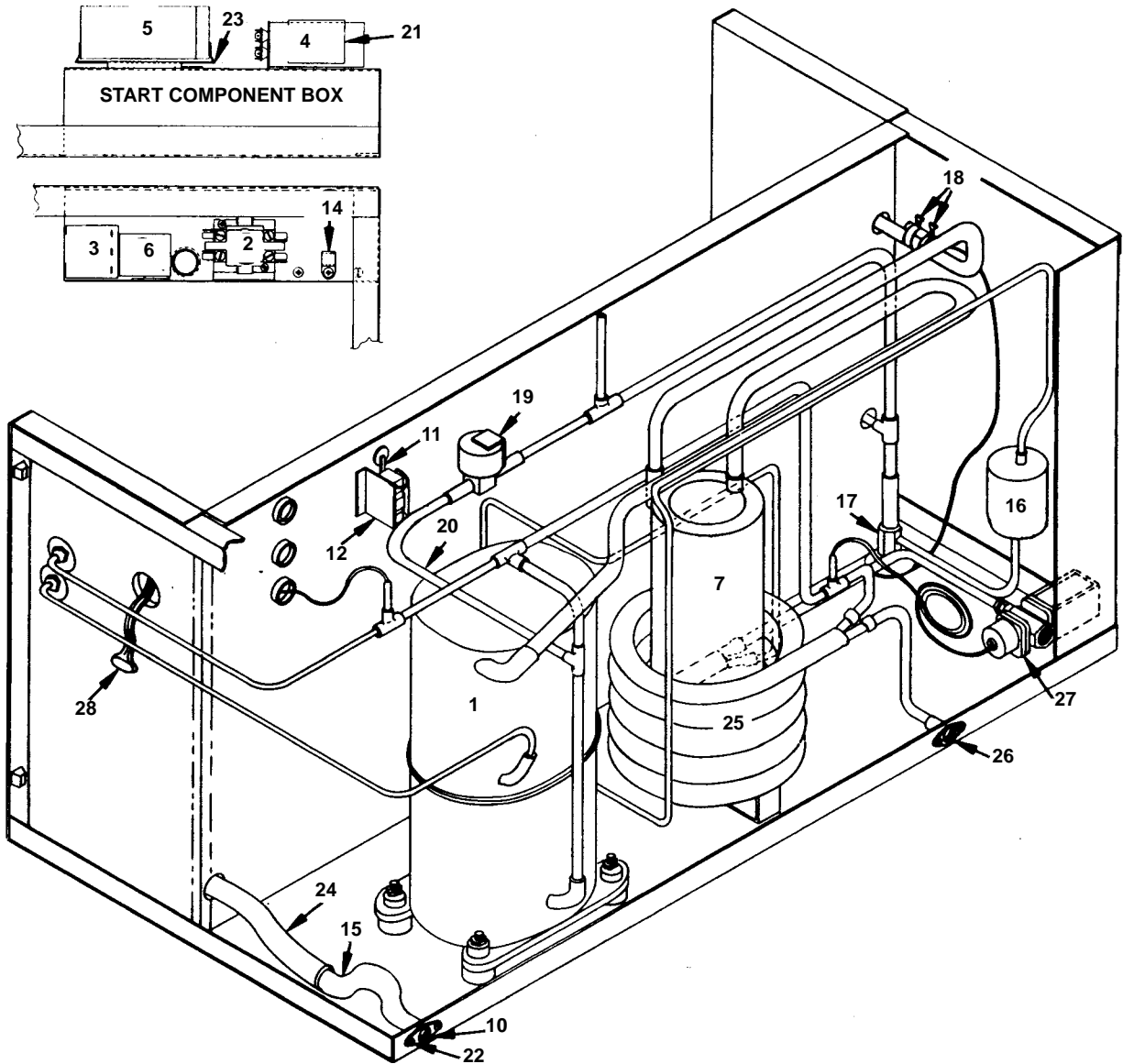
AIR-COOLED

	PART NO.		PART NO.
1 Compressor Assembly 1 Phase, 60 Hz 220V	† 76-2815-3	22a Fan Blade Prior to SN 870260500 For Fan Motor K33HXCEJ-948	24-1617-3
1a Compressor Assembly 3 Phase	† 76-2816-3	23 Fan Cycle Control	23-0115-3
2 Contactor - 1 Phase	† 24-1016-9	24 Fan Motor Prior to SN 870260500	† 76-2638-3
2a Contactor - 3 Phase	24-1017-3	25 Hot Gas Solenoid Valve Assembly	24-0433-3
3 Delay Timer (Air and water)	† 24-0635-3	26 Run Capacitor Bracket	623341-4
4 Run Capacitor	See Page 9	27 Start Capacitor Bracket	85-0309-3
5 Start Capacitor	See Page 9	28 Tubing, 5/8" ID	† 44-2038-3
6 Start Relay	See Page 9	29 Water Pump Female Lead	† 20-7311-3
7 Accumulator	No Longer Available	30 Water Siphon Assembly	76-2091-3
8 Adapter (Fresh water inlet)	600242-1	31 Motor Mounting Bracket Up to SN 870260500	34-0621-3
9 Adapter, Inlet Union	13-6096-1	32 Fan Motor After SN 870260500	24-1243-3
10 Adapter, Sump Drain	17-0602-1	33 Fan Capacitor After SN 870260500	No Longer Available
11 Activating Pin Assembly	76-2025-3	34 Fan Blade After SN 870260500	24-1612-3
12 Air Condenser with Shroud	No Longer Available	35 Motor Mounting Bracket After SN 870260500	34-0616-3
13 Air Condenser Only	No Longer Available	To Retrofit New Fan Motor To Ice Machines Prior to SN 870260500 Use	
14 Bin Switch	† 23-0111-9	76-2286-3	
15 Bin Switch Bracket	617531-4	36 Water Dump Solenoid Coil Only (Dole)	24-0464-3
16 Bin Switch Mylar Insulation	619961-4	37 Water Dump Solenoid (Alco)	000001768
17 Cable Clamp, Nylon	† 56-5004-9	38 Air Baffle (Not shown)	† 76-2195-3
18 Drain Overflow Tube	† 626511-4	39 Vinyl Tubing	† 44-2033-3
19 Drier	† 89-3027-9	40 Hose Clamp	† 56-5060-9
20 Expansion Valve	† 76-2707-3	To Replace Siphon With Water Dump Solenoid Use Retrofit	
21 Expansion Valve Stainless Steel Bulb Clamp	† 56-5052-9	† 76-2308-3	
22 Fan Blade Prior to SN 870260500 For Motors ESP-OL5OEM2 and ESP-OL5OEM28	24-1608-3		

NOTE: FOR 50 CYCLE PARTS, SEE PAGE 8

† Refer to Cross Reference Guide

G-0800 WATER-COOLED



1234

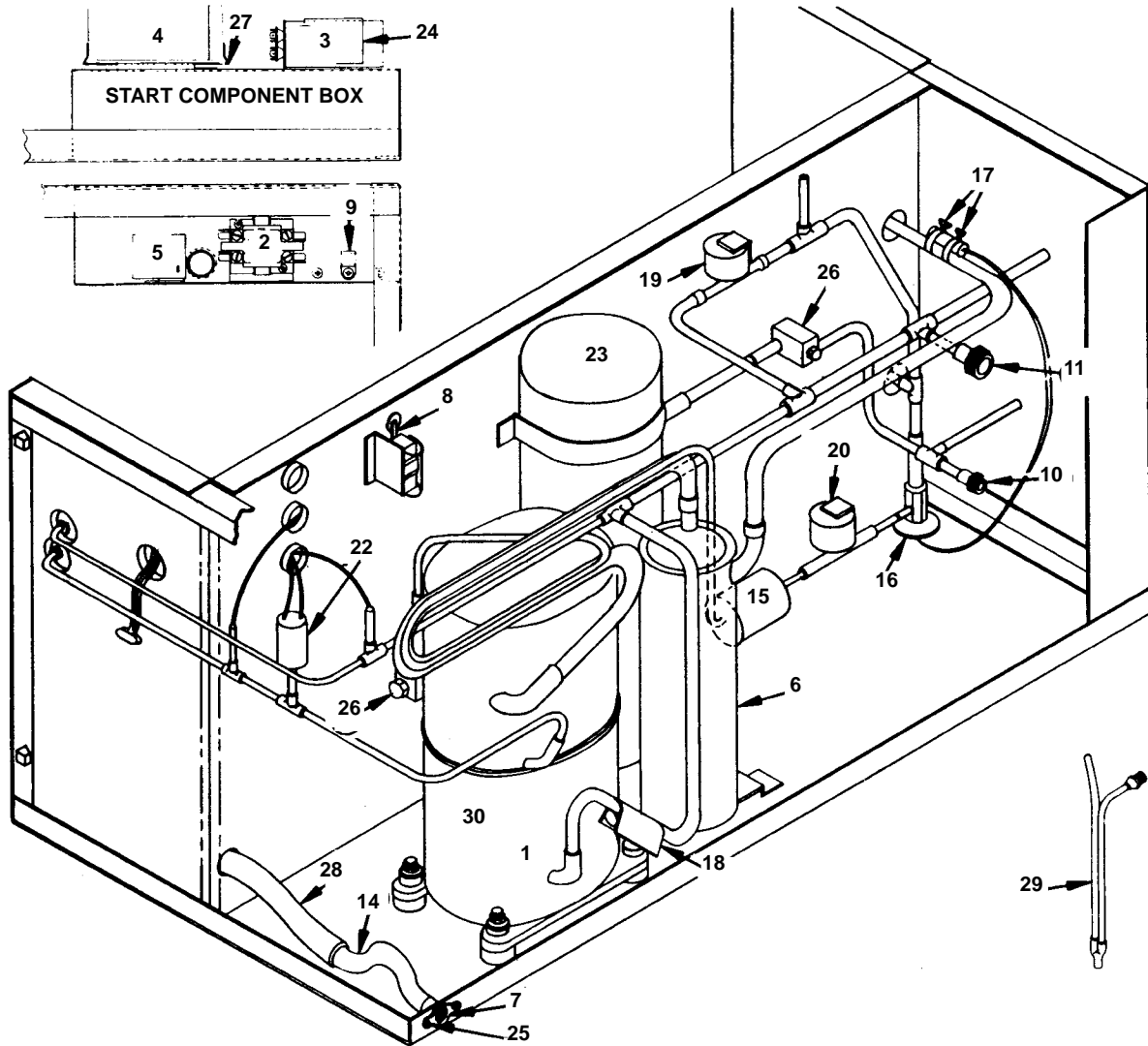
WATER-COOLED

		PART NO.		PART NO.
1	Compressor Assembly, 60 Hz 220V	† 76-2815-3	16	Drier † 89-3027-9
2	Contactor	† 24-1016-9	17	Expansion Valve † 76-2707-3
3	Delay Timer (Air and water)	† 24-0635-3	18	Expansion Valve Stainless Steel Bulb Clamp † 56-5052-9
4	Run Capacitor	See Page 9	19	Hot Gas Solenoid Valve Assembly
5	Start Capacitor	See Page 9	20	Receiver 12-0003-1
6	Start Relay	See Page 9	21	Run Capacitor Bracket 623341-4
7	Accumulator	No Longer Available	22	Screw 10-24 Slot Head † 52-0205-9
8	Activating Pin Assembly	76-2025-3	23	Start Capacitor Bracket 85-0309-3
9	Adapter, Fresh Water Inlet	600242-1	24	Tubing, 5/8" ID † 44-2038-3
10	Adapter, Sump Drain	17-0602-1	25	Water Condenser † 88-6512-7
11	Bin Switch	† 23-0111-9	26	Water Condenser Outlet Adapter
12	Bin Switch Bracket	617531-4	27	Water Regulator † 83-7206-9
13	Bin Switch Mylar Insulation	619961-3	28	Water Pump Female Lead † 20-7311-3
14	Cable Clamp, Nylon	† 56-5004-9		
15	Drain Overflow Tube	† 626511-4		

NOTE: FOR 50 CYCLE PARTS, SEE PAGE 8

† Refer to Cross Reference Guide

G-0800 REMOTE UP TO SN 880960000



1235

REMOTE SYSTEM

COMPRESSOR COMPARTMENT

	PART NO.
1 Compressor Assembly 1 Phase, 60 Hz 220V	† 76-2815-3
2 Contactor	† 24-1016-9
3 Run Capacitor	See Page 9
4 Start Capacitor	See Page 9
5 Start Relay	See Page 9
6 Accumulator	No Longer Available
7 Adapter, Sump Drain	17-0602-1
8 Bin Switch	† 23-0111-9
9 Cable Clamp, Nylon	† 56-5004-9
10 Coupling	† 83-6037-3
11 Coupling	† 83-6036-3
12 Coupling "0" Ring for 83-6037-3	† 83-6022-9
13 Coupling "0" Ring for 83-6036-3	† 83-6023-9
14 Drain Overflow Tube	† 626511-4
15 Drier	† 89-3027-9
16 Expansion Valve	† 76-2707-3
17 Expansion Valve Stainless Steel Bulb Clamp	† 56-5052-9
18 Heater (On discharge line)	† 76-2013-3

19 Hot Gas Solenoid Valve Assembly ...	24-0433-3
20 Liquid Line Pump Down Valve Assembly 208/230V 50/60 Hz (Danfoss)	† 76-3008-1
21 Liquid Line Pump Down Valve Coil Only Alco	† 24-0448-3
22 Pressure Limiter Switch	† 23-0116-9
23 Receiver	† 76-2958-3
24 Run Capacitor Bracket	623341-4
25 Screw 10-24 x 5/8"	† 52-0205-9
26 Service Valve For Receiver	† 83-7316-9
27 Start Capacitor Bracket	85-0309-3
28 Tubing, 5/8" ID	† 44-2038-3
29 Water Siphon Assembly	76-2091-3
30 3 Phase Compressor	76-2180-3

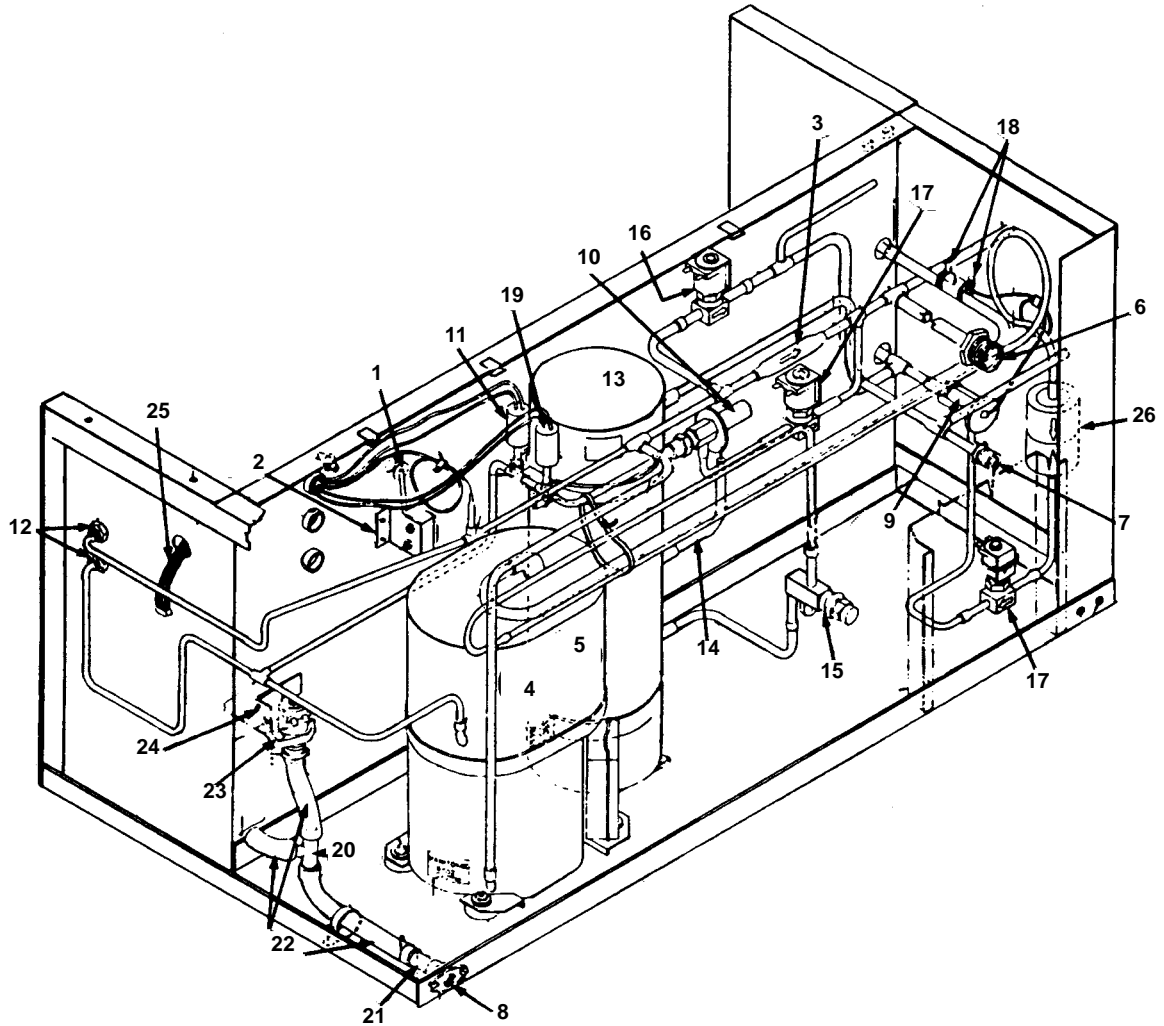
PARTS LOCATED IN REMOTE CONDENSER

Fan Motor	† 76-1984-3
Head Pressure Control	† 83-6806-9
Female Coupling Kit	07-0066-3

NOTE: FOR 50 CYCLE PARTS, SEE PAGE 8

† Refer to Cross Reference Guide

G-0800 REMOTE AFTER SN 880960000



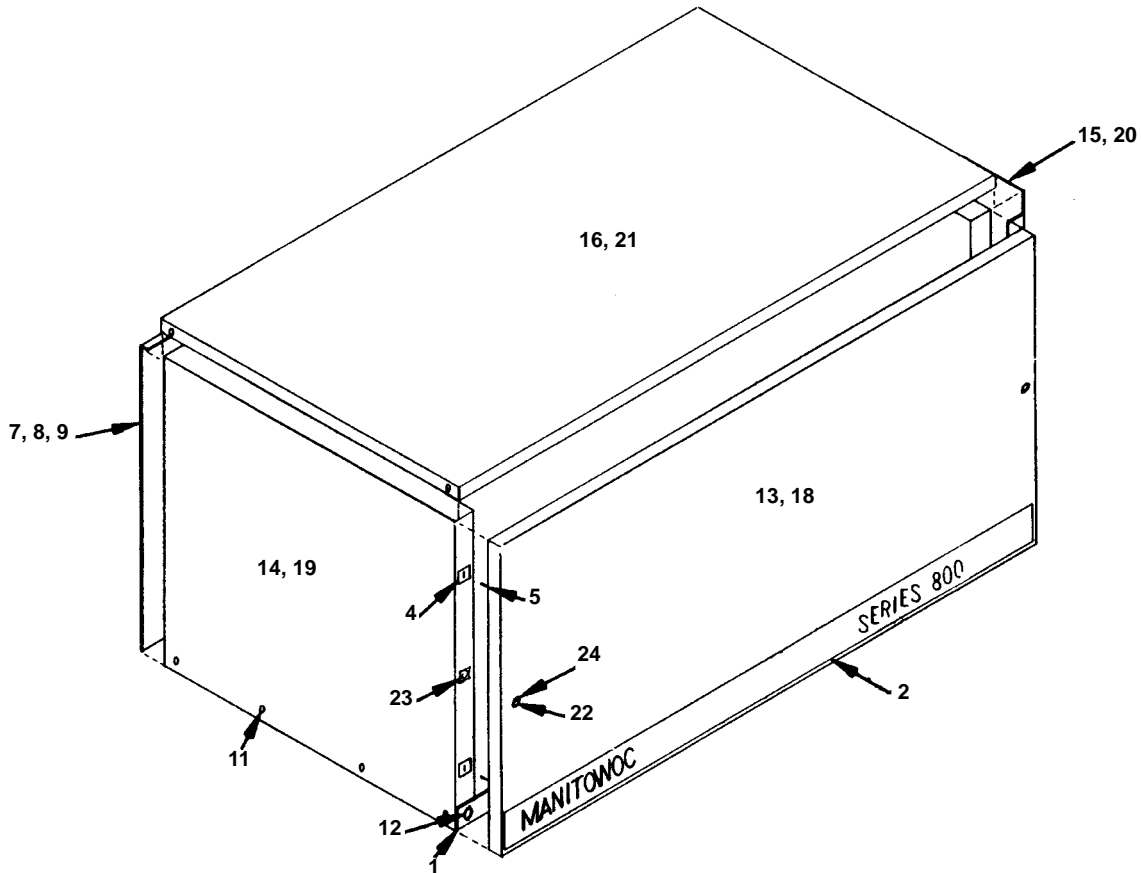
1236

	PART NO.		PART NO.
1 Bin Switch	† 23-0111-9	14 Receiver Safety Plug	† 628451-9
2 Bin Switch Bracket	617531-4	15 Receiver Service Valve	† 83-7316-9
3 Check Valve	† 83-7314-9	16 Solenoid Valve, Hot Gas	24-0433-3
4 Compressor Assembly, 1 PH 60 Hz 220V	† 76-2815-3	17 Solenoid Valve, Liquid Line or Harvest Assist 208/230V 50/60 Hz (Danfoss)	† 76-3008-1
5 Compressor Assembly, 3 Phase	† 76-2816-3	18 Stainless Steel Worm Drive Clamp	† 56-5052-9
6 Coupling Assembly, 1/2"	† 83-6037-3	19 Suction, Pressure Cut-out Switch	No Longer Available
7 Coupling Assembly, 3/8"	† 83-6036-3	20 Tee, Barbed	83-9102-3
8 Drain Fitting	17-0602-1	21 Tube, 5/8" OD x 2" Long	623451-4
9 Expansion Valve	† 76-2707-3	22 Tubing, 1/2" 1D x 3/4" OD	† 44-2033-3
10 Harvest Pressure Expansion Valve	83-6731-3	23 Water Dump Solenoid Valve	† 24-0462-9
11 Low Pressure Control - Pump Down	23-5527-3	24 Dump Valve Bracket	626031-4
12 Process Valve	† 83-7310-9	25 Water Pump Lead	† 20-7311-3
13 Receiver	† 76-2958-3	26 Drier	† 89-3027-9
13a Receiver Mounting Bracket	600056-1		

NOTE: FOR 50 CYCLE PARTS, SEE PAGE 8

† Refer to Cross Reference Guide

G-0800 OUTER PANELS



1237

COMMON PARTS

	PART NO.
1 Front Support Angle	† 658031-9
2 Front Panel Trim	† 81-3137-3
3 Front Panel Seal	† 92-0250-9
4 Front Panel Catches Only (Pkg. of 12)	76-2064-3
5 Front Panel Strike Only (Pkg. of 25) . .	76-2063-3
6 Front Panel Strike-n-Catch (Pkg. of 4 each)	76-2029-3
7 Rear Panel (Air-cooled)	76-2020-3
8 Rear Panel (Water-cooled)	76-2021-3
9 Rear Panel (Remote)	76-2022-3
10 #10-24 Phillips Head Screw (Mounting control box cover) (Pkg. of 12)	† 52-0205-9
11 #10-24 Slot Head Screw (Mounting outer panels) (Pkg. of 12)	† 52-0206-9
12 #10-24 Phillips Head Screw (Mounting front angle support) (Pkg. of 12)	† 52-0209-9

OUTER PANELS - FAWN

	PART NO.
13 Front Panel - Textured Fawn	76-2156-3
14 Left Hand End Panel	No Longer Available
15 Right Hand End Panel	No Longer Available
16 Top Cover - Fawn	683851-4
17 Fawn Touch Up Paint	94-0093-1

OUTER PANELS - STAINLESS STEEL

18 Front Panel	76-2158-3
18 Front Panel - McDonalds	No Longer Available
19 Left Hand End Panel	† 686153-4
20 Right Hand End Panel	† 76-2159-3
21 Top Cover - Stainless	No Longer Available

LATE PRODUCTION FRONT PANEL

22 Front Panel Screw	† 50-2668-9
23 Cage Nut	† 54-2910-9
24 Hole Plug (Black)	† 43-0155-9
25 Spacer for Front Panel Screw	† 37-1819-9

MODEL G-0800 50 HZ MODELS ONLY

Use same parts as previously listed for standard G-0800 except for the following:

Compressor Assembly	† 76-2817-3
Compressor Start Components	See Page 9
Remote Fan Motor - (Located in remote condenser unit)	† 76-1985-3
Control Board	† 76-2396-3

PART NO.

† Refer to Cross Reference Guide

COMPRESSOR COMPONENTS FOR G-0800

230V/60 HZ/1 PH

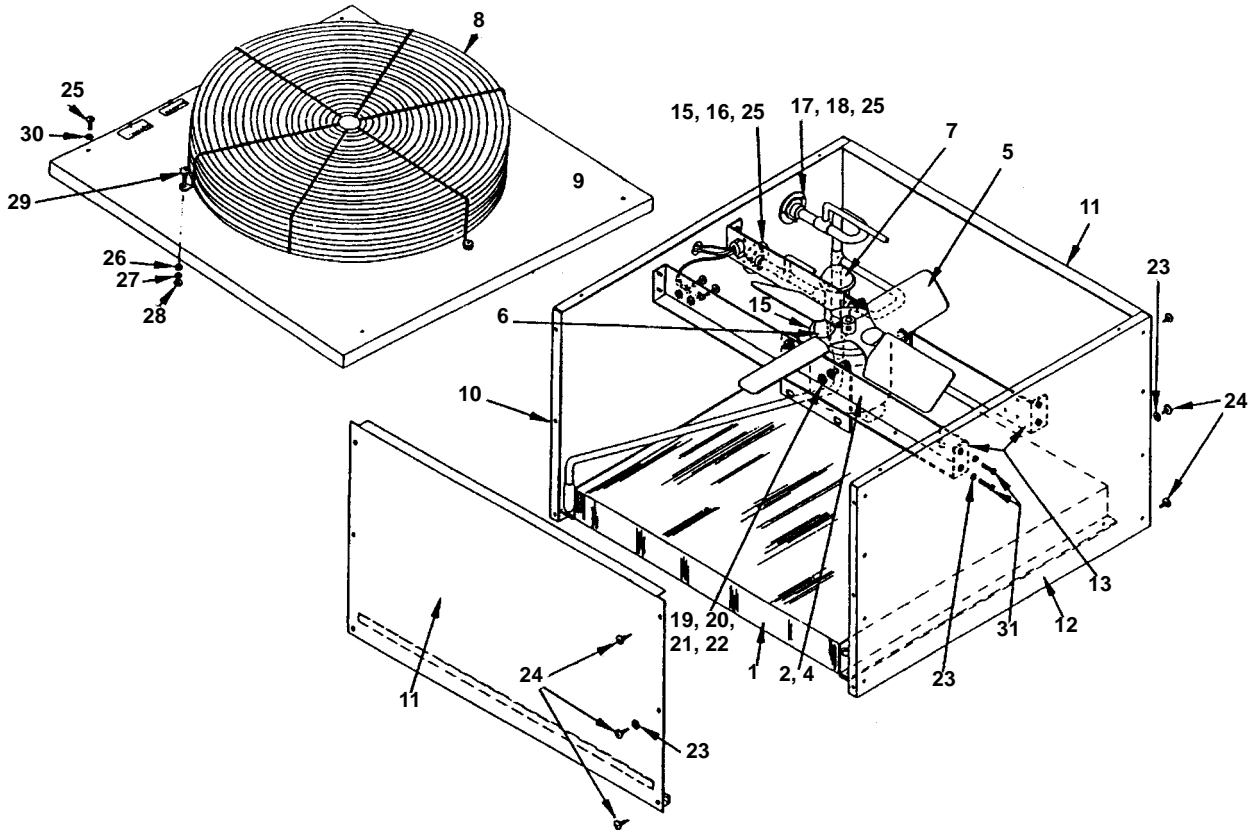
Compressor Model Number	Start Relay	Start Capacitor	Run Capacitor
Tecumseh AB5524G	† 20-0799-3	† 85-0314-3	† 85-0439-3
Bristol M52B143BBCB	† 76-2611-3	85-0364-3	20-1014-3
Bristol M53B143BBCB	85-0425-3	85-0314-3	85-0439-3
Tecumseh AWA7512ZXD	20-0757-9	85-0551-3	† 20-1013-3

230V/50 HZ/1 PH

Compressor Model Number	Start Relay	Start Capacitor	Run Capacitor
Tecumseh AB5530G	85-0362-3	† 85-0314-3	† 85-0439-3
Bristol H25B32QABHB	20-0755-9	85-0441-3	† 000000028
Bristol M52B183BBCB	85-0392-3	85-0364-3	85-0393-3
Tecumseh AWA7512ZXC	85-0561-3	85-0383-3	† 20-1013-3

† Refer to Cross Reference Guide

REMOTE CONDENSER AC-0895



1238

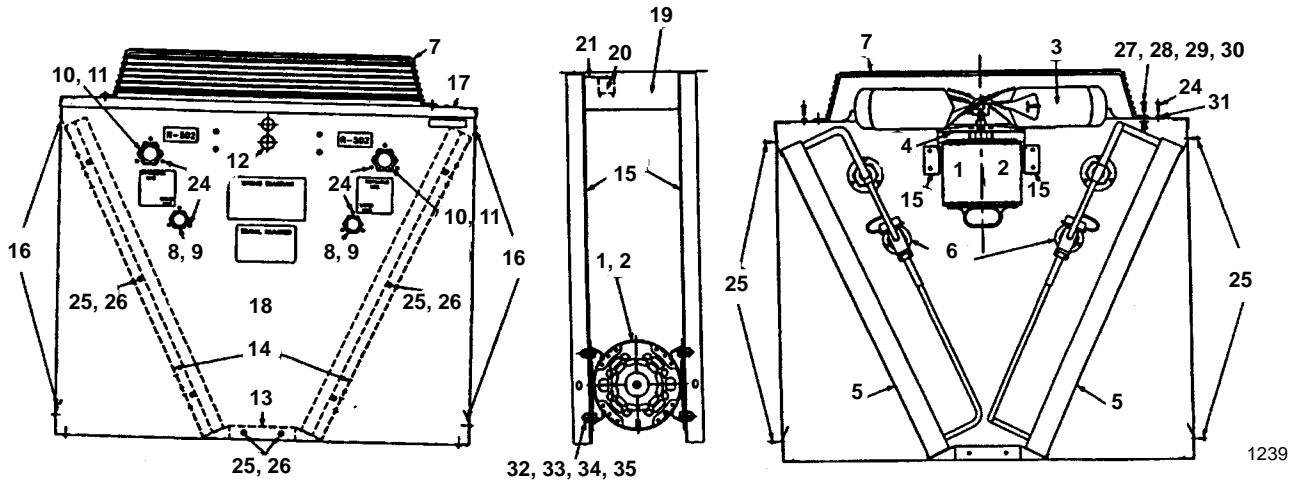
	PART NO.		PART NO.		
1	Air Condenser	† 88-5062-9	17	Coupling Mounting Flange	83-6017-3
2	Fan Motor, 60 Hz 230V*	† 76-2941-3	18	Coupling Assembly 1/2 OD	† 83-6037-3
3	Run Capacitor (Emerson)*	85-0335-3	19	Lockwasher 5/16 Split	† 55-7313-9
3a	Run Capacitor (Magnatec)	No Longer Available	20	Flatwasher	† 55-7309-9
4	Fan Blade*	24-1611-3	21	Hex Nut 5/16 - 18	† 54-2975-9
5	Fan Motor 50 Hz 230V*	† 76-2941-3	22	Screw 5/16-18 Hex Head	† 50-3565-9
6	Rain Shield*	24-1505-3	23	Lockwasher #8	† 55-4459-9
7	Head Pressure Control	† 83-6806-9	24	Screw 8-1/2	† 51-2153-9
8	Fan Grill	34-0064-3	25	Screw 10-24 x 5/8	† 52-0205-9
9	Top Cover	† 601775-1	26	Hex Nut 1/4-20	† 54-2952-9
10	Rear Panel	† 76-2261-3	27	Flatwasher 1/4"	† 55-7304-9
11	Panel, Right and Left End	76-2231-3	28	Lockwasher 1/4" Split	† 55-4511-9
12	Front Panel	† 601772-1	29	Screw 1/2-20 x 5/8	† 50-3345-9
13	Bracket, Fan Motor and Base	† 601768-1	30	Lockwasher #10	† 55-4464-9
14	Legs (Condenser mounting)	† 601769-1	31	Screw, 8-32 x 1/2	† 50-2624-9
15	Coupling Mounting Flange	83-6018-3	32	Female Coupling Kit	07-0066-3
16	Coupling Assembly 3/8 OD	† 83-6036-3			

*Early models used a single bracket to mount the fan motor. Those units use the following parts:

Fan Motor, 60 Hz 230V	† 76-1984-3
Fan Motor, 50 Hz 230V	† 76-1985-3
Rain Shield	No Longer Available
Fan Blade	24-1607-3
Run Capacitor	24-1502-3

† Refer to Cross Reference Guide

REMOTE CONDENSER DC-0896



	PART NO.
1 Fan Motor, 115V 60 Hz	† 76-2942-3
2 Fan Motor, 230V 50/60 Hz	† 76-2941-3
3 Fan Blade	24-1611-3
4 Rain Slinger	24-1505-3
5 Air Condenser DC0896A (Uses 2)	† 88-5062-9
6 Headmaster Control - R-502	† 83-6806-9
7 Fan Guard	34-0064-3
8 Male Coupling, 1-1/8 x 3/8 OD	† 83-6036-3
9 Coupling Flange for 83-6036-3	83-6018-3
10 Male Coupling, 1-7/16 - 16 x 1/2 OD	† 83-6037-3
11 Coupling Flange for 83-6037-3	83-6017-3
12 Hole Plug for 7/8" Hole	43-0146-3
13 Base	601779-1
14 Condenser Mounting Angle	601777-1
15 Base Bracket for Fan Mounting	† 601768-1
16 Support Bracket	† 601778-1
17 Top Cover	601789-1
18 Front Panel	† 601794-1
19 Electrical Box Cover	† 601776-1
20 Relay	24-0819-3
21 Relay Mounting Bracket	600000-1
22 Transformer (Not shown)	24-1027-3
23 Electrical Junction Box (Not shown)	25-1501-3
24 Screw, #10-24 x .62	† 52-0205-9
25 Screw, #8 x .50	† 51-2153-9
26 Lockwasher, #8	† 55-4459-9
27 Screw, .25 x .62	† 50-3345-9
28 Lockwasher .25 Split SS	† 55-4511-9
29 Washer - Flat .25 SS	† 55-7304-9
30 Nut .25-20 Steel Hex	† 54-2952-9
31 Lockwasher #10	† 55-4464-9
32 Screw, 31-18 x .62 Hex Head	† 50-3565-9
33 Nut .31-18 Steel Hex Head	† 54-2975-9
34 Washer, Flat .31 ID	† 55-7309-9
35 Lockwasher .31 Split Zinc	† 55-7313-9
36 Back Panel (Not shown)	† 601788-1

NOTE: Items 20, 21, 22 and 23 are used only when the optional K-00095 relay/transformer kit has been installed.

INTENTIONALLY LEFT BLANK