

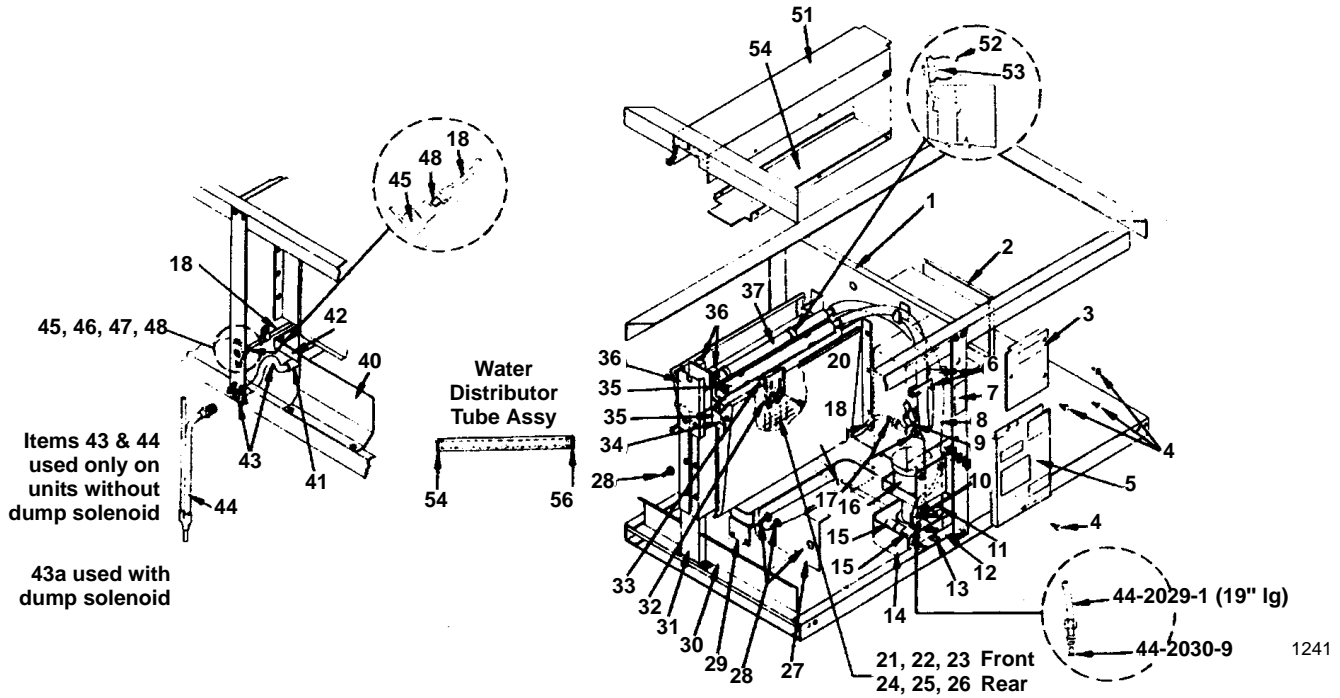


**Ice Machine Parts List for
Series G-1200 Cuber Models**

R-502 System

Manufactured February 1986 through February 1993

G-1200



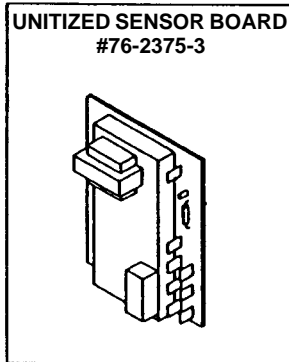
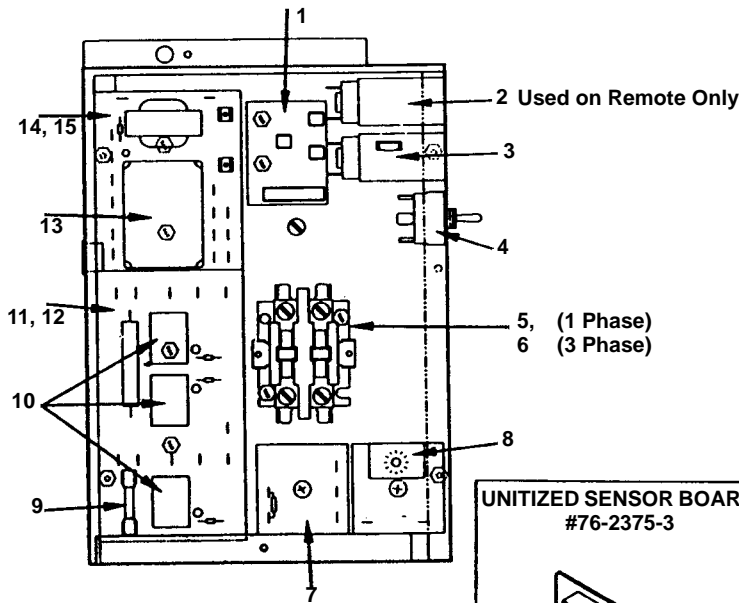
		PART NO.			PART NO.
1	Foam Tape	† 92-0250-9	27	Front Water Curtain Stop	663361-4
2	Side Cover (For start component box)	624371-4	28	Thumbscrew (For mounting items 27, 29, 30) (4 per)	† 53-0504-9
3	Front Cover (For start component box)	† 76-2228-3	29	Left Hand Sump Trough Support	No Longer Available
4	10-24 x 3/8" Hex Head Screw	† 52-0210-9	30	Splash Shield	660831-4
5	Control Box Cover	76-2227-3	31	Evaporator Support Post	659471-4
6	Water Flow Clamp Assembly	76-2054-3	32	Ice Thickness Control	† 76-2061-3
7	Toggle Switch Label	81-3124-3	33	Ice Thickness Control Bracket	618581-4
8	Water Pump Discharge Tube (Using siphon)	† 76-2126-3	34	Water Curtain Hanger (Pin on curtain)	† 56-5045-9
	Discharge Tube (With dump valve)	44-2053-3	35	Water Curtain LH and RH Bracket Kit	† 76-2177-3
9	Water Strainer	† 12-6003-3	36	Water Distributor Tube Assembly (Front)	76-2313-3
10	Barbed Tee	83-9102-3	37	Water Distributor Tube Assembly (Rear)	76-2252-3
11	Plastic Clamp (For mounting water discharge tube to water pump)	† 56-5053-9	38	Raceway Support	† 626971-4
12	Sump Trough Support Bracket Up to SN 870860000	664521-4	39	Bin Switch (2 per)	† 624641-9
12a	Sump Trough Support Bracket After SN 870860000	664591-4	40	Water Curtain Limiter Bracket	622341-4
13	#8-32 Wing Nut (For mounting items 12 & 15)	† 54-8913-9	41	Tygon Drain Tube 5/8 ID x 7/8 OD	† 44-2038-3
14	Sump Trough Assembly Up to SN 870860000	No Longer Available	42	Right Hand Sump Trough Support	660271-4
14a	Sump Trough Assembly After SN 870860000	† 687711-9	43	Water Drain Overflow Tube Assembly	† 000000148
14b	Sump Plug	† 43-0052-9	43a	Drain Fitting Used w/Dump Valve	No Longer Available
15	Float Valve Assembly	† 83-6905-9	44	Water Siphon Tube Assembly	† No Longer Available
15a	Float Valve Mounting Bracket	No Longer Available	45	Fresh Water Inlet Adapter	600242-1
16	Water Pump Assy	† 76-2601-3	46	#8-32 x 1/2" Machine Screw	† 50-2624-9
17	Poly Flow Union (Used at water strainer only)	83-6129-3	47	#8-32 Hex Nut	† 54-2906-9
18	Poly Flow Water Supply Tube 1/4" OD	44-2029-1	48	#8 Lockwasher	† 55-4459-9
19	Drain Tube Bracket	625341-4	49	Union (Used with item 45)	13-6096-1
20	Water Curtain Assembly (Front and rear)	686641-4	50	Bottom Channel	662191-4
21	Evaporator Assembly Front Reg. Cube	No Longer Available	51	Top Channel	686421-4
22	Evaporator Assembly Front Dice Cube	† 76-2240-9	52	Mounting Clip (For water distributor tube)	† 56-5047-9
23	Evaporator Assembly Front Half Dice Cube	† 76-2242-9	53	Centering Pin (For water distributor tube)	† 50-1313-9
24	Evaporator Assembly Rear Reg. Cube	No Longer Available	54	End Plug	† 44-0820-9
25	Evaporator Assembly Rear Dice Cube	† 76-2241-9	55	Tube Seal	† 44-0821-9
26	Evaporator Assembly Rear Half Dice Cube	† 76-2243-9	56	Dump Valve 208/230V	000001768
				Front Switch Protector	† 665521-4
				Rear Switch Protector	† 665522-4
				To replace siphon with water dump solenoid use Retrofit	No Longer Available

NOTE: FOR 50 HZ PARTS, SEE PAGE 3

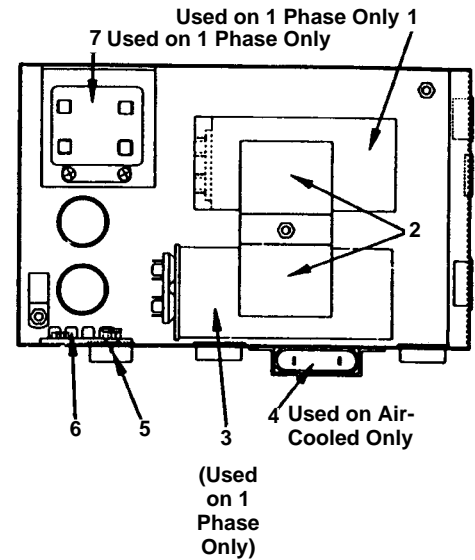
† Refer to Cross Reference Guide

G-1200, CONTINUED

CONTROL BOX ASSEMBLY



START COMPONENT BOX ASSEMBLY



1 AND 3 PHASE CONTROL BOX ASSEMBLY

	PART NO.
1 Terminal Board.....	25-1045-3
2 Low Pressure Control Up to SN 870860000.....	No Longer Available
Low Pressure Control After SN 870860000.....	23-5527-3
3 High Pressure Control Up to SN 870860000.....	23-5521-3
High Pressure Control After SN 870860000.....	† 23-5524-3
High Pressure Control McDonalds Only	23-5525-3
4 Toggle Switch.....	† 23-0084-9
5 Contactor (Used on 1 Phase only)...	† 24-1016-9
6 Contactor (Used on 3 Phase only)...	24-1017-3
7 Delay Timer 7 Seconds	† 24-0635-3
8 Water Pump Delay Timer (Used with siphon).....	† 24-0642-3
Interval Timer (Used with dump valve).....	† 24-0643-3
9 Fuse (Pkg. of 6) 5 Amp	† 25-1037-9
10 Relay (3 per)	24-0813-3
11 Relay Board.....	24-0812-3
12 Mounting Track (For relay board)....	44-0808-3
13 Ice Sensor Module*	Use † 76-2375-3
14 Transformer Board*	Use † 76-2375-3
15 Mounting Track (For transformer board)	44-0801-3
16 Water Shield (Used when stacking) ..	665341-4
*Unitized Sensor Board	† 76-2375-3

(Used to replace both the transformer board and sensor module)

1 PHASE START COMPONENT BOX ASSEMBLY

(Also Used On 3 Phase, Less Start Components)

	PART NO.
1 Start Capacitor	See Page 9
2 Capacitor Mounting Bracket.....	624411-4
3 Run Capacitor	See Page 9
4 Fan Motor Capacitor (Air-cooled only)	No Longer Available
5 Ground Screw #10-32	† 50-2701-9
6 Terminal Board.....	25-1013-1
7 Start Relay	See Page 9

G-1200 50 HZ PARTS

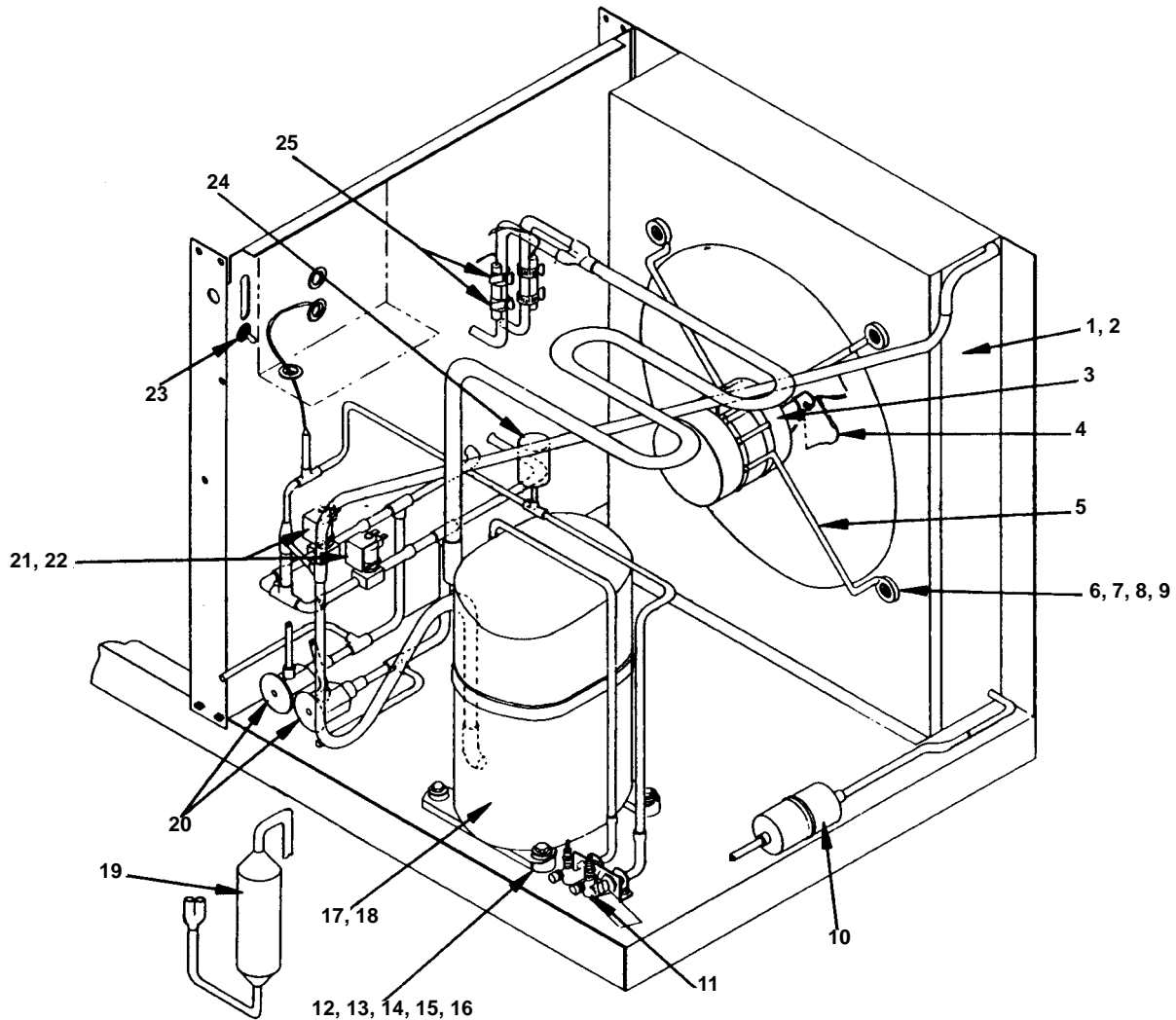
	PART NO.
Compressor 50 Hz 1 Phase 220-240V ...	† 76-0330-3
Starting Relay	See Page 9
Start Capacitor.....	See Page 9
Run Capacitor	See Page 9
Compressor 50 Hz 3 Phase 380-415V ...	† 76-2824-3
Water Pump with Mounting Bracket & Cover.....	† 76-2601-3
Unitized Sensor Board.....	† 76-2396-3

REMAINING PARTS ARE SAME AS USED ON 60 HZ CUBER.

1242

† Refer to Cross Reference Guide

G-1200 COMPRESSOR COMPARTMENT AIR-COOLED



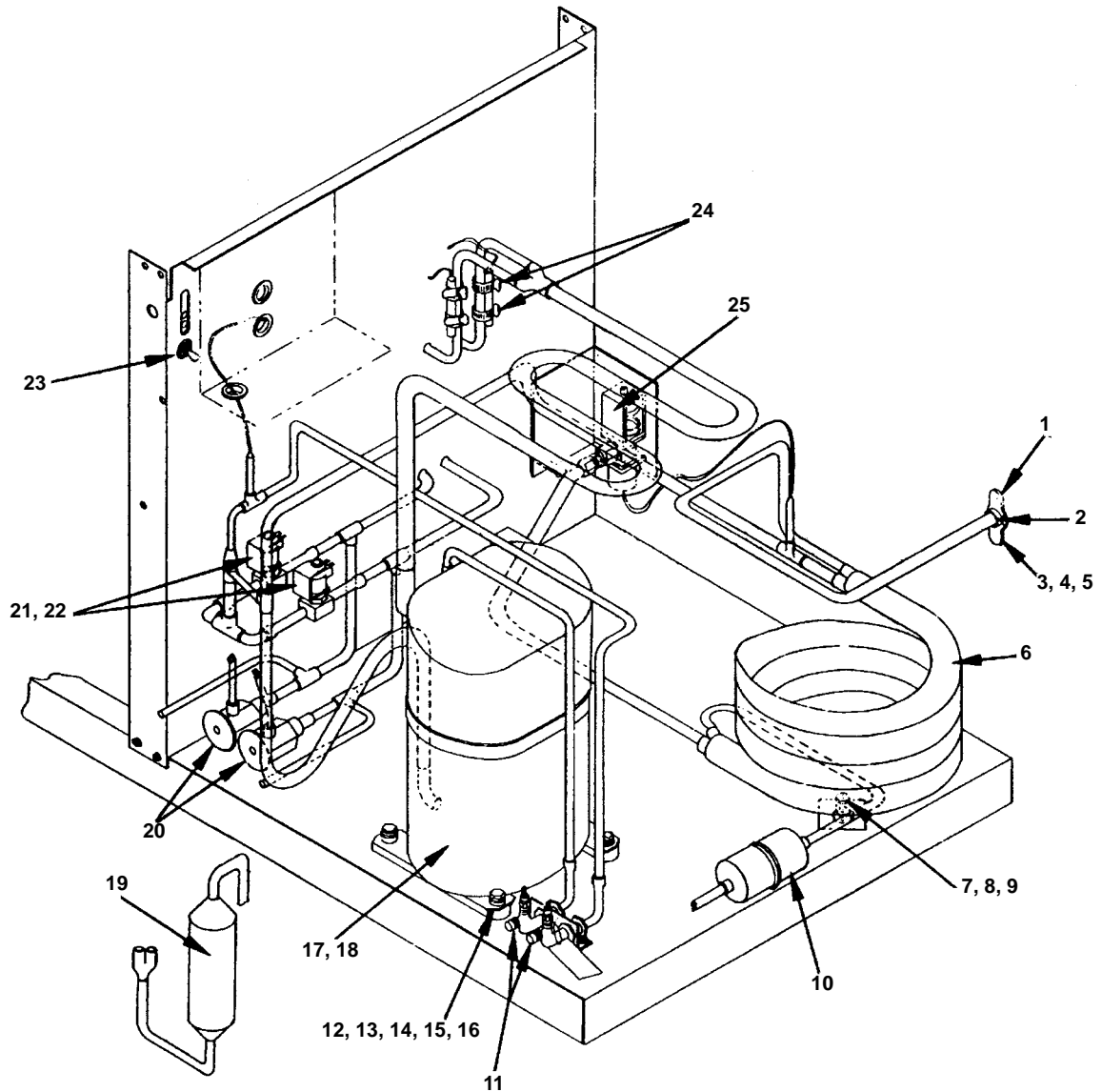
1243

		PART NO.			PART NO.
1	Air Condenser (With shroud)	76-2253-3	17a	Compressor Crankcase Heater (for Bristol)	85-0391-3
2	Air Condenser (Only)	88-5051-3	18	Compressor 3 Phase 230V (For electrical starting components, See Page 9)	† 76-0329-3
3	Fan Motor	24-1243-3	19	Receiver	12-0003-1
4	Fan Blade	24-1609-3	20	Expansion Valve	† 76-2251-3
5	Hold Down Bracket (For fan motor) . .	34-0616-3	21	Solenoid Valve Assembly w/Coil (Hot gas)	76-3010-1
6	1/4 x 1.75 Screw	† 50-3358-9	22	Solenoid Valve Coil Only Alco	† 24-0448-3
7	1/4 Lockwasher	† 55-4510-9	23	Toggle Switch	† 23-0084-9
8	1/4 Flat Washer	† 55-7305-9	24	Fan Cycle Control	23-0115-3
9	Grommet & Nut	† 54-2955-9	25	Worm Drive Clamp (For expansion valve bulb)	† 56-5052-9
10	Drier	† 89-3027-9		Air Baffle	76-2270-3
11	High and Low Side Process Valve . . .	† 83-7310-9			
12	Grommet (4 per)	† 85-0306-9			
13	Sleeve (4 per)	† 85-0394-9			
14	3/8 ID Flat Washer (4 per)	† 55-7309-9			
15	3/8 Lockwasher	† 55-4514-9			
16	3/8-16 x 1-3/4" Screw	† 50-3764-9			
17	Compressor 1 Phase 230V (For electrical starting components, See Page 9)	† 76-0328-3			

NOTE: FOR 50 HZ PARTS, See PAGE 3

† Refer to Cross Reference Guide

G-1200 COMPRESSOR COMPARTMENT WATER-COOLED

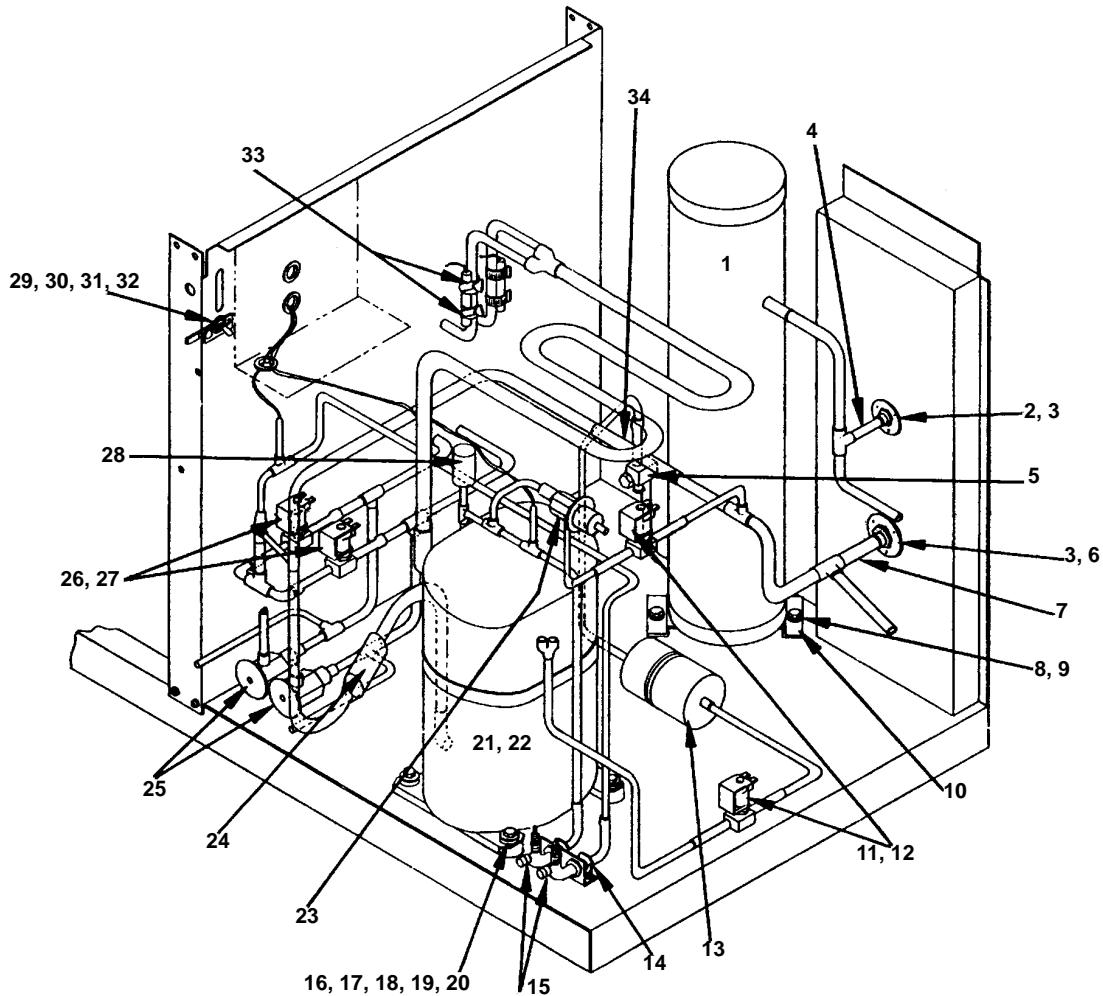


1244

		PART NO.			PART NO.
1	Water Adapter	17-0602-1	17a	Compressor Crankcase Heater (for Bristol)	85-0391-3
2	Flush Bushing	† 13-0005-9	18	Compressor 3 Phase 230V (For electrical starting components, See Page 9)	† 76-0329-3
3	#8-32 x 1/2" Mounting Screw	† 50-2624-9	19	Receiver	12-0003-1
4	#8 Lockwasher	† 55-4459-9	20	Expansion Valve	† 76-2251-3
5	Hex Nut	† 54-2906-9	21	Solenoid Valve Assembly w/Coil (Hot gas)	76-3010-1
6	Water Condenser	† 11-6511-7	22	Solenoid Valve Coil (Only) (For hot gas valve 76-3010-1) Alco	† 24-0448-3
7	1/4 - 20 x 5/8" Screw	50-3238-9	23	Toggle Switch	† 23-0084-9
8	9/32 Flat Washer	† 55-7317-9	24	Worm Drive Clamp (For mounting expansion valve bulb)	† 56-5052-9
9	#8 Lockwasher	† 55-4459-9	25	Water Regulator Valve	† 83-7206-9
10	Drier	† 89-3027-9	NOTE: FOR 50 HZ PARTS, See PAGE 3		
11	High and Low Side Process Valve	† 83-7310-9			
12	Grommet	† 85-0306-9			
13	Sleeve	† 85-0394-9			
14	3/8 ID Flat Washer	† 55-7309-9			
15	3/8 Lockwasher	† 55-4514-9			
16	3/8-16 x 1-3/4" Screw	† 50-3764-9			
17	Compressor 1 Phase 230V (For electrical starting components, See Page 9)	† 76-0328-3			

† Refer to Cross Reference Guide

G-1200 REMOTE UP TO SN 870860000



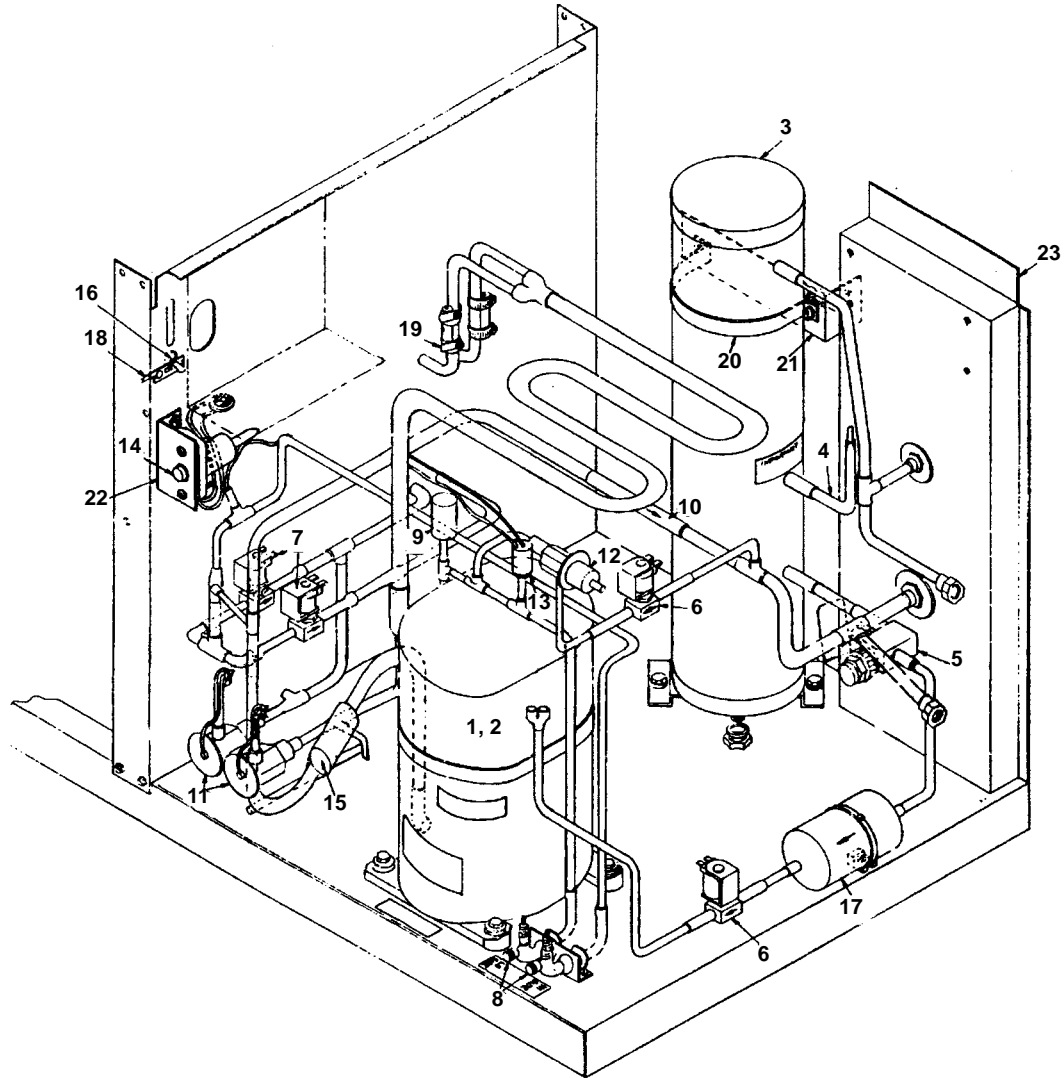
1245

	PART NO.		PART NO.
1 Receiver	† 76-2327-3	20 3/8"-16 x 1-3/4" Screw	† 50-3764-9
2 Male Coupling Mounting Flange 1/2"	83-6018-3	21 Compressor 1 Phase 230V (For electrical starting components, See Page 9)	† 76-0328-3
3 #10-24 x 3/8" Hex Head Screw (Mounting items 2 & 6)	† 52-0210-9	21a Compressor Crank Case Heater	85-0391-3
4 Male Coupling Assembly 3/8"	† 83-6036-3	22 Compressor 3 Phase 230V (For electrical starting components, See Page 9)	† 76-0329-3
5 Service Valve (For receiver)	† 83-7316-9	23 Harvest Pressure Expansion Valve	† 83-6753-3
6 Male Coupling Mounting Flange 3/8"	83-6017-3	24 Heater (Discharge line)	† 76-2013-3
7 Male Coupling Assembly 1/2"	† 83-6037-3	25 Expansion Valve	† 76-2251-3
8 3/8"-16 x 7/8" Screw (Mounting receiver bracket)	† 50-3767-9	26 Solenoid Valve Assembly w/Coil (Hot gas defrost)	76-3010-1
9 3/8" Lockwasher (Mounting receiver bracket)	† 55-4514-9	27 Solenoid Valve Coil (Only) (Hot gas defrost) for solenoid valve 76-3010-1 Alco	† 24-0448-3
10 Mounting Bracket (For receiver)	608681-4	28 Suction Pressure Switch	No Longer Available
11 Solenoid Valve Assembly w/Coil (For liquid line pump down or harvest assist) 208/230V 50/60 Hz (Danfoss)	† 76-3008-1	29 Toggle Switch	† 23-0084-9
12 Solenoid Valve Coil (Only) (For solenoid valve 76-3008-1) Alco	† 24-0448-3	30 Toggle Switch Lever	624381-4
13 Drier	† 89-3027-9	31 Toggle Switch End Cap	† 43-0045-9
14 Palnut (Mounting processing valve)	† 54-7503-9	32 Brass Stud (Mounting item 30)	† 50-1308-9
15 High and Low Side Processing Valve	† 83-7310-9	33 Worm Drive Clamp (Mounting expansion valve bulb)	† 56-5052-9
16 Grommet (4 per)	† 85-0306-9	34 Magni-check Valve	† 83-7315-9
17 Sleeve (4 per)	† 85-0394-9		
18 3/8" Flat Washer (4 per)	† 55-7309-9		
19 3/8" Lockwasher (4 per)	† 55-4514-9		

NOTE: FOR 50 HZ PARTS, See PAGE 3

† Refer to Cross Reference Guide

G-1200 REMOTE AFTER SN 870860000

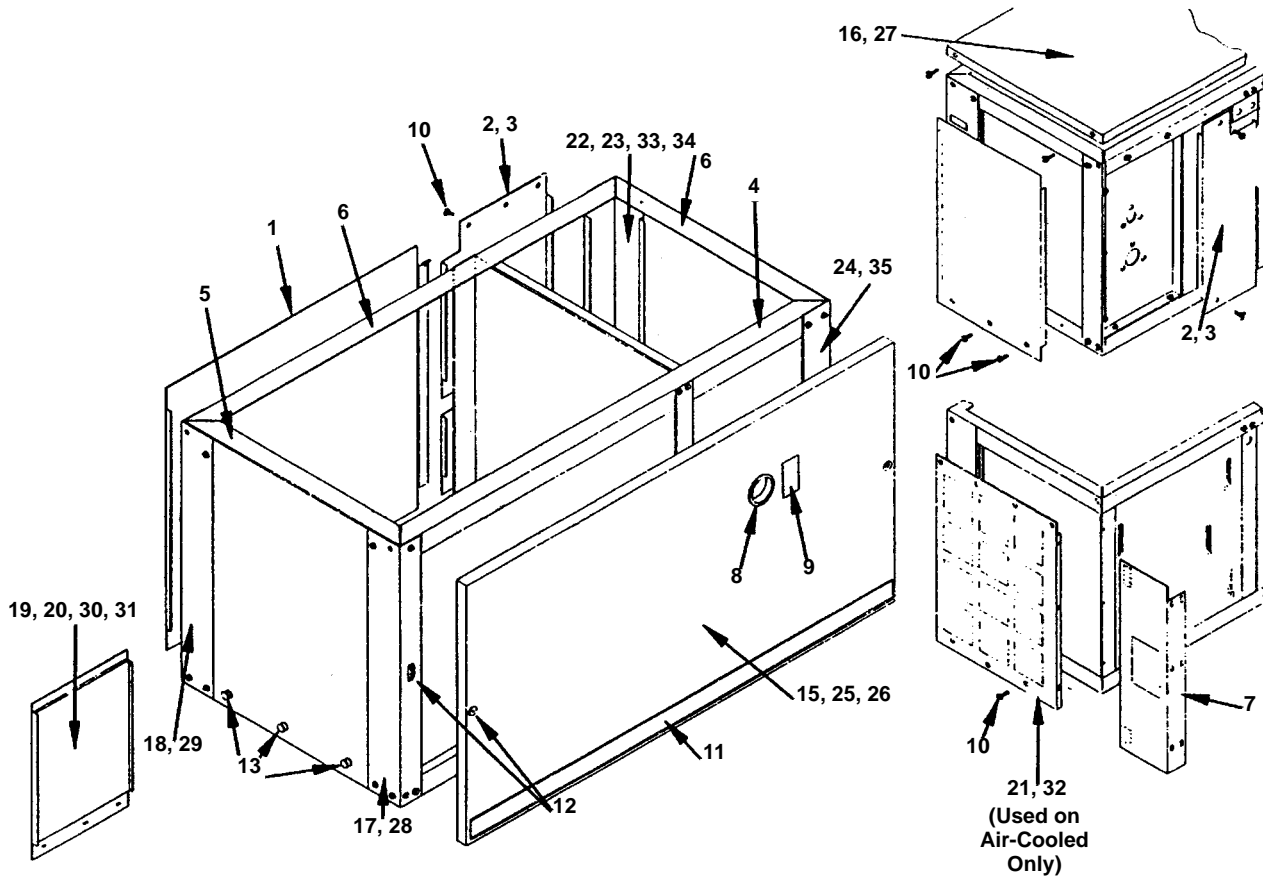


1246

	PART NO.
1 Compressor, 1 Phase 230V	† 76-0328-3
2 Compressor, 3 Phase 230V	† 76-0329-3
3 Receiver	† 76-2327-3
4 Soft Plug Weldment	† 628451-9
5 Receiver Service Valve	† 83-7316-9
6 Solenoid Valve, Harvest & Liquid Line 208/230V 50/60 Hz (Danfoss)	† 76-3008-1
7 Solenoid Valve, Hot Gas	76-3010-1
8 Process Valve	† 83-7310-9
9 Suction Pressure Switch	No Longer Available
10 Magni-check Valve	† 83-7315-9
11 Expansion Valve	† 76-2251-3
12 Harvest Pressure Expansion Valve	† 83-6753-3
13 Low Pressure Control	23-5527-3
14 High Pressure Control	† 23-5524-3
15 Heater	† 76-2013-3
16 Toggle Switch	† 23-0084-9
17 Drier	† 89-3027-9
18 Toggle Switch Lever	624381-4
19 Worm Drive Clamp	† 56-5052-9
20 Receiver Strap	628191-4
21 Receiver Strap Mounting Bracket	664801-4
22 Mounting Bracket High Pressure Control	627701-4
23 Remote Coupling Mounting Panel	662461-4

† Refer to Cross Reference Guide

G-1200 OUTER PANELS



1247

COMMON PARTS

		PART NO.
1	Back Panel Assembly	76-2247-3
2	Back Panel - Remote	663221-4
3	Back Panel - Water-cooled	663231-4
4	Front Rail	† 665361-4
5	Left Hand End Rail	† 629021-4
6	Rear & Right Hand Rail	686561-4
7	Air Baffle (Rear 1 per Air-cooled)	76-2270-3
8	Bushing (Used on remote only)	† 25-0013-9
9	Toggle Switch Label	81-3124-3
10	Screw 10-24 x 3/8" for Mounting Outer Panels	† 52-0210-9
11	Label Trim for Front Panel	81-3201-3
12	Mounting Screw & Cage Nut (Pkg. of 2)	76-2226-3
12a	Spacer For Front Panel	† 37-1819-9
13	Thumbscrew (Used on left hand end panel only)	† 50-1209-9
14	Cartoning Assembly	† 71-0825-9

OUTER PANELS - FAWN

15	Front Panel - Air-cooled	76-2287-3
	Front Panel - Water-cooled	76-2289-3
	Front Panel - Remote	76-2291-3
16	Top Cover	686631-4
17	Left Hand Front Column Assembly	No Longer Available
18	Left Hand Rear Column Assembly	No Longer Available
19	Left Hand End Panel - Air-cooled	76-2219-3

PART NO.

20	Right Hand & Left Hand End Panel Remote & Water	76-2219-3
21	Right Hand End Panel - Air-cooled	No Longer Available
22	Right Hand Rear Column Water-cooled	662561-4
23	Right Hand Rear Column - Remote	662731-4
24	Right Hand Front Column	662571-4

OUTER PANELS - STAINLESS STEEL

25	Front Panel - Air-cooled	76-2288-3
	Front Panel - Water-cooled	76-2290-3
	Front Panel - Remote	76-2292-3
26	Front Panel (McDonald's) - Air-cooled	76-2293-3
	Front Panel (McDonald's) - Water-cooled	76-2294-3
	Front Panel (McDonald's) - Remote	76-2295-3
27	Top Cover	686632-4
28	Left Hand Front Column Assembly	76-2221-3
29	Left Hand Rear Column Assembly	76-2220-3
30	RH & LH End Panel - Remote & Water	76-2218-3
31	Left Hand End Panel - Air-cooled	76-2218-3
32	Right Hand End Panel - Air-cooled	663252-4
33	Right Hand Rear Column Water-cooled	662562-4
34	Right Hand Rear Column - Remote	662732-4
35	Right Hand Front Column	662572-4

† Refer to Cross Reference Guide

COMPRESSOR COMPONENTS FOR G-1200

230V/60 HZ/1 PH

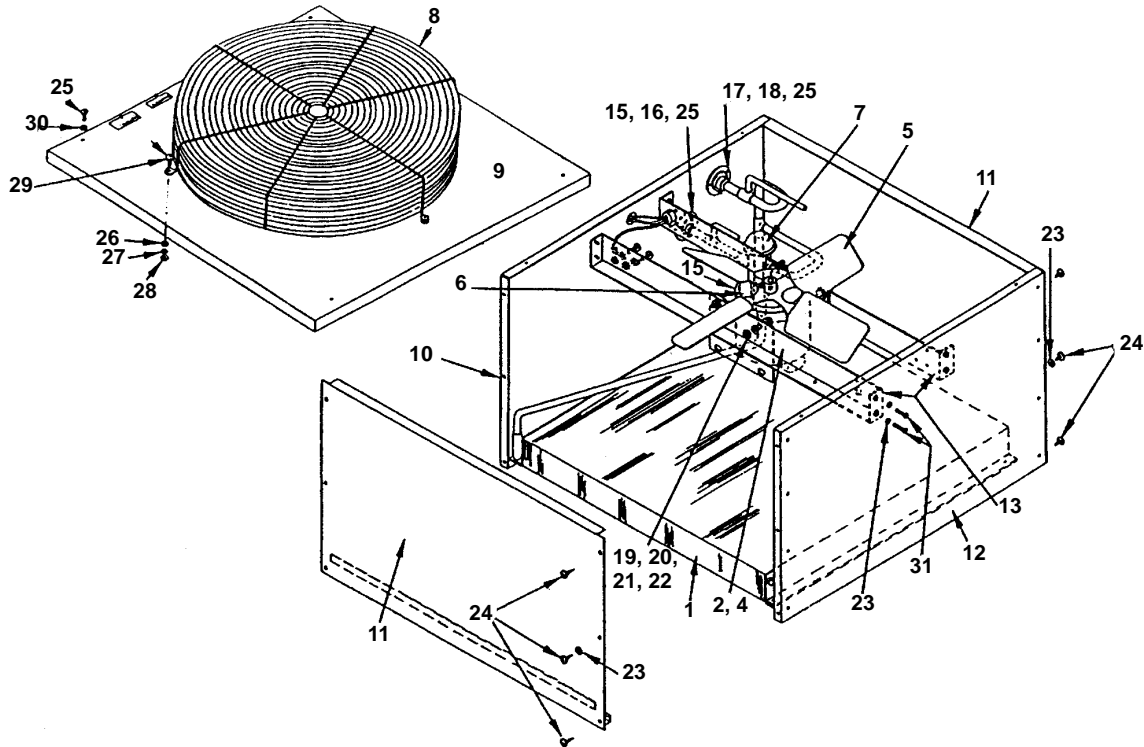
Compressor Model Number	Start Relay	Start Capacitor	Run Capacitor
Tecumseh AV5542E	† 85-0367-3	† 85-0316-3	† 000000028
Bristol	85-0379-3	† 85-0385-3	† 20-1013-3
Tecumseh AVA7524ZXN	20-0751-9	85-0551-3	000001395
Copeland	20-0756-3	85-5356-3	000000028

230V/50 HZ/1 PH

Compressor Model Number	Start Relay	Start Capacitor	Run Capacitor
Bristol	85-0380-3	† 85-0385-3	† 20-1013-3
Tecumseh	20-0752-9	85-0551-3	† 000000028
Copeland	20-0753-3	85-5356-3	000000028

† Refer to Cross Reference Guide

REMOTE CONDENSER AC-1295

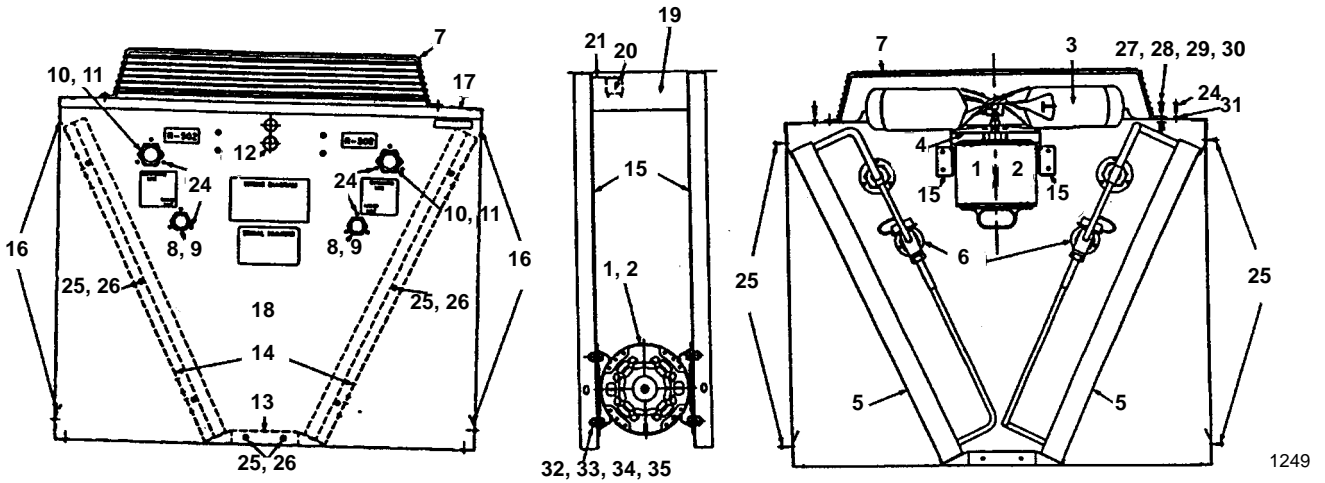


1248

	PART NO.
1 Air Condenser	† 88-5089-9
2 Fan Motor, 60 Hz 230V	† 76-2941-3
3 Run Capacitor (Emerson)	85-0335-3
3a Run Capacitor (Magnatec)	No Longer Available
4 Fan Blade	24-1611-3
5 Fan Motor, 50 Hz 230V	† 76-2941-3
6 Rain Shield	24-1505-3
7 Head Pressure Control	† 83-6806-9
8 Fan Grill	34-0064-3
9 Top Cover	† 601775-1
10 Rear Panel	† 76-2261-3
11 Panel, Right & Left End	76-2231-3
12 Front Panel	† 601772-1
13 Bracket, Fan Motor & Base	† 601768-1
14 Legs (Condenser Mounting)	† 601769-1
15 Coupling Mounting Flange	83-6018-3
16 Coupling Assembly 3/8 OD	† 83-6036-3
17 Coupling Mounting Flange	83-6017-3
18 Coupling Assembly 1/2 OD	83-6037-3
19 Lockwasher 5/16 Split	† 55-7313-9
20 Flatwasher	† 55-7309-9
21 Hex Nut 5/16-18	† 54-2975-9
22 Screw 5/16-18 Hex Head	† 50-3565-9
23 Lockwasher #8	† 55-4459-9
24 Screw #8-1/2	† 51-2153-9
25 Screw #10-24 x 5/8	† 52-0205-9
26 Hex Nut 1/4-20	† 54-2952-9
27 Flatwasher 1/4"	† 55-7304-9
28 Lockwasher 1/4" Split	† 55-4511-9
29 Screw 1/2-20 x 5/8	† 50-3345-9
30 Lockwasher #10	† 55-4464-9
31 Screw, #8-32 x 1/2	† 50-2624-9
32 Female Coupling Kit	07-0066-3

† Refer to Cross Reference Guide

REMOTE CONDENSER DC-1296A



1249

		PART NO.
1	Fan Motor, 115V 60 Hz	† 76-2942-3
2	Fan Motor, 230V 50/60 Hz	† 76-2941-3
3	Fan Blade	24-1611-3
4	Rain Slinger	24-1505-3
5	Air Condenser DC1296A (Uses 2)	† 88-5089-9
6	Headmaster Control - R-502	† 83-6806-9
7	Fan Guard	34-0064-3
8	Male Coupling, 1-1/8 x 3/8 OD	† 83-6036-3
9	Coupling Flange for 83-6036-3	83-6018-3
10	Male Coupling, 1-7/16 - 16 x 1/2 OD	† 83-6037-3
11	Coupling Flange for 83-6037-3	83-6017-3
12	Hole Plug for 7/8" Hole	43-0146-3
13	Base	601779-1
14	Condenser Mounting Angle	601777-1
15	Base Bracket for Fan Mounting	† 601768-1
16	Support Bracket	† 601778-1
17	Top Cover	601789-1
18	Front Panel	† 601794-1
19	Electrical Box Cover	† 601776-1
20	Relay	24-0819-3
21	Relay Mounting Bracket	600000-1
22	Transformer (Not shown)	24-1027-3
23	Electrical Junction Box (Not shown)	25-1501-3
24	Screw, #10-24 x .62	† 52-0205-9
25	Screw, #8 x .50	† 51-2153-9
26	Lockwasher, #8	† 55-4459-9
27	Screw, .25 x .62	† 50-3345-9
28	Lockwasher.25 Split SS	† 55-4511-9
29	Washer - Flat .25 SS	† 55-7304-9
30	Nut .25-20 Steel Hex	† 54-2952-9
31	Lockwasher #10	† 55-4464-9
32	Screw, 31-18 x .62 Hex Head	† 50-3565-9
33	Nut .31-18 Steel Hex Head	† 54-2975-9
34	Washer, Flat .31 ID	† 55-7309-9
35	Lockwasher .31 Split Zinc	† 55-7313-9
36	Back Panel (Not shown)	† 601788-1

NOTE: Items 20, 21, 22 and 23 are used only when the optional K-00095 Relay/Transformer Kit has been installed.

† Refer to Cross Reference Guide

INTENTIONALLY LEFT BLANK