

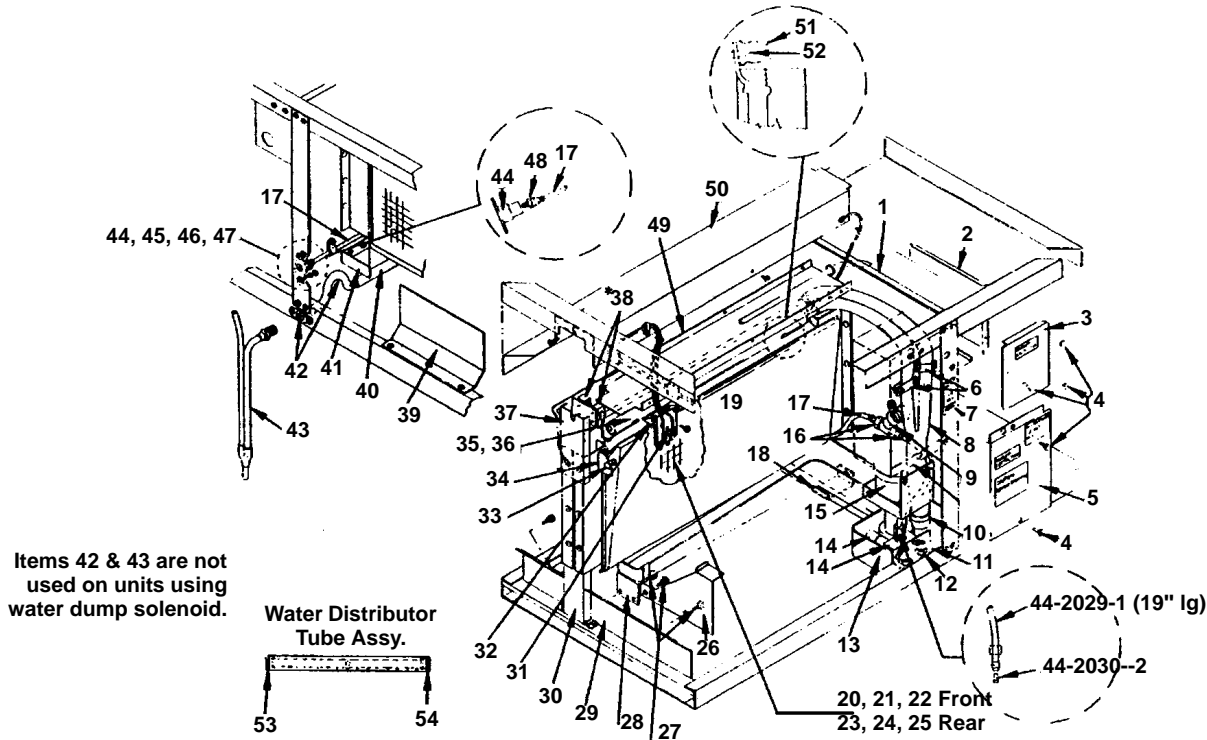


**Ice Machine Parts List for
Series G-1700 Cuber Models**

R-502 System

Manufactured February 1986 through March 1993

G-1700 EVAPORATOR COMPARTMENT GROUP



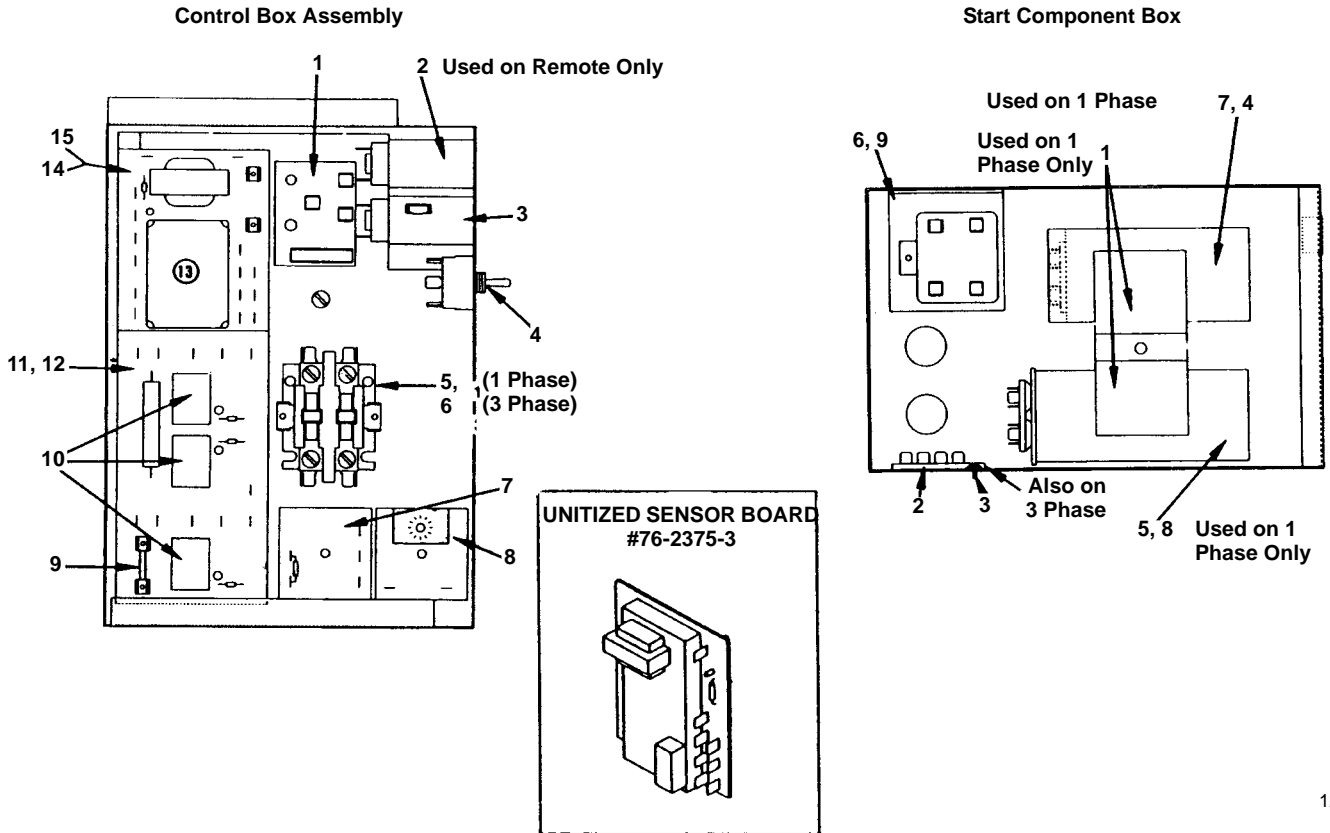
1251

| | PART NO. | | PART NO. |
|--|---------------------|--|-----------------------|
| 1 Foam Tape | † 92-0250-9 | 26 Front Water Curtain Stop | 663361-4 |
| 2 Side Cover (For compressor start component box) | 624371-4 | 27 Thumbscrew (For mounting items 26, 28, 29) (4 Per) | † 53-0504-9 |
| 3 Front Cover (For compressor start component box) | † 76-2228-3 | 28 Left Hand Sump Trough Support | No Longer Available |
| 4 10-24 x 3/8" Hex Head Screw | † 52-0210-9 | 29 Splash Shield | 660831-4 |
| 5 Control Box Cover | 76-2227-3 | 30 Evaporator Support Post | 659471-4 |
| 6 Water Flow Clamp Assembly | 76-2054-3 | 31 Ice Thickness Control | † 76-2061-3 |
| 7 Toggle Switch Label | 81-3124-3 | 32 Ice Thickness Control Bracket | 618581-4 |
| 8 Water Pump Discharge Tube (With siphon) | † 76-2126-3 | 33 Water Curtain Hanger (Pin on curtain) | † 56-5045-9 |
| 9 Pump Discharge Tube (Units with dump valve) | 44-2053-3 | 34 Water Curtain LH and RH Bracket Kit | † 76-2177-3 |
| 10 Barbed Tee | 83-9102-3 | 35 Water Distributor Tube Assembly (Front) | 76-2103-3 |
| 11 Overflow Tube (Units with dump valve) | 44-2054-3 | 36 Water Distributor Tube Assembly (Rear) | 76-2104-3 |
| 12 Water Trough Plug | † 43-0052-9 | 37 Raceway Support | † 626971-4 |
| 13 Water Strainer | † 12-6003-3 | 38 Bin Switch (2 per) | † 624641-9 |
| 14 Plastic Clamp (For mounting water discharge tube to water pump) | † 56-5053-9 | 38a Bin Switch Mounting Bracket | 626981-4 |
| 15 Sump Trough Support Bracket Prior to SN 870860000 | 660251-4 | 39 Water Curtain Limiter Bracket | 622341-4 |
| 16 Sump Trough Support Bracket After SN 870860000 | 664591-4 | 40 Tygon Drain Tube | † 44-2038-3 |
| 17 #8-32 Wing nut (For mounting items 11 & 14) | † 54-8913-9 | 41 Left Hand Sump Trough Support | 660271-4 |
| 18 Sump Trough Up to SN 870860000 | 685161-4 | 42 Water Drain Overflow Tube Assembly | † 000000148 |
| 19 Sump Trough After SN 870860000 | † 687721-9 | 43 Water Siphon Tube Assembly | † No Longer Available |
| 20 Float Valve Assembly | † 83-6905-9 | 44 Fresh Water Inlet Adapter | 600242-1 |
| 21 Float Valve Mounting Bracket | No Longer Available | 45 8-32 x 1/2" Machine Screw | † 50-2624-9 |
| 22 Water Pump w/Mounting Bracket & Cover 60 Hz | † 14-8027-9 | 46 8-32 Hex Nut | † 54-2906-9 |
| 23 Poly Flow Union (Used at water strainer only) | 83-6129-3 | 47 #8 Lockwasher | † 55-4459-9 |
| 24 Poly Flow Water Supply Tube | 44-2029-1 | 48 Union (Used with item 44) | 13-6096-1 |
| 25 Drain Tube Bracket | 625341-4 | 49 Bottom Channel | 662471-4 |
| 26 Water Curtain Assembly (Front & rear) | † 685531-4 | 50 Top Channel | 686441-4 |
| 27 Evaporator Assembly Front Regular Cube | † 76-2208-9 | 51 Mounting Clip (For water distributor tube assembly) | † 56-5047-9 |
| 28 Evaporator Assembly Front Dice Cube | † 76-2210-9 | 52 Centering Pin (For water distributor tube) | † 50-1313-9 |
| 29 Evaporator Assembly Front Half Dice Cube | † 76-2212-9 | 53 End Plug | † 44-0820-9 |
| 30 Evaporator Assembly Rear Regular Cube | † 76-2209-9 | 54 Tube Seal | † 44-0821-9 |
| 31 Evaporator Assembly Rear Dice Cube | † 76-2211-9 | 55 Dump Valve 208/230V | 000001768 |
| 32 Evaporator Assembly Rear Half Dice Cube | † 76-2213-9 | Front Switch Protector | † 665521-4 |
| | | Rear Switch Protector | † 665522-4 |

See Parts Bulletin PB-46 for bin switch variations.
To replace siphon assembly with water dump solenoid, use retrofit 76-2310-3

† Refer to Cross Reference Guide

G-1700 CONTROL BOX



1252

1 AND 3 PHASE CONTROL BOX ASSEMBLY

| | PART NO. |
|--|--------------------------|
| 1 Terminal Board | 25-1045-3 |
| 2 Low Pressure Control Up to SN 870860000 | No Longer Available |
| 2a Low Pressure Control After SN 870860000 | 23-5527-3 |
| 3 High Pressure Cut-out Up to SN 870860000 | 23-5521-3 |
| 3a High Pressure Cut-out After SN 870860000 | † 23-5524-3 |
| 4 Toggle Switch | † 23-0084-9 |
| 5 Contactor (Used on 1 phase only) | 24-1021-3 |
| 6 Contactor (Used on 3 phase only) | No Longer Available |
| 7 Delay Timer 7 Seconds | † 24-0635-3 |
| 8 Timer, Pump Delay, Units Using Siphon System | † 24-0642-3 |
| 8a Timer, Units Using Dump Valve | † 24-0643-3 |
| 9 Fuse (Pkg. of 6) 5 Amp | † 25-1037-9 |
| 10 Relay (3 per) | 24-0813-3 |
| 11 Relay Board | 24-0812-3 |
| 12 Mounting Track (For relay board). | 44-0808-3 |
| 13 Ice Sensor Module Use | † 76-2375-3 |
| 14 Transformer Board Use | † 76-2375-3 |
| 15 Mounting Track (For transformer board) Unitized Sensor Board | 44-0801-3 † 76-2375-3 |
| (Used to replace both the transformer board and sensor module) | |
| 16 Water Shield Used when Stacking | 665341-4 |

1 PHASE START COMPONENT BOX ASSEMBLY

(Also Used On 3 Phase, Less Start Components)

| | PART NO. |
|--|-----------------|
| 1 Capacitor Mounting Bracket | 624411-4 |
| 2 Terminal Board | 25-1013-1 |
| 3 Ground Screw #10-32 | † 50-2701-9 |
| BRISTOL START COMPONENTS* | |
| 4 Start Capacitor | See Page 8 |
| 5 Run Capacitor | See Page 8 |
| 6 Start Relay | See Page 8 |
| TECUMSEH START COMPONENTS* | |
| 7 Start Capacitor | See Page 8 |
| 8 Run Capacitor | See Page 8 |
| 9 Start Relay | See Page 8 |

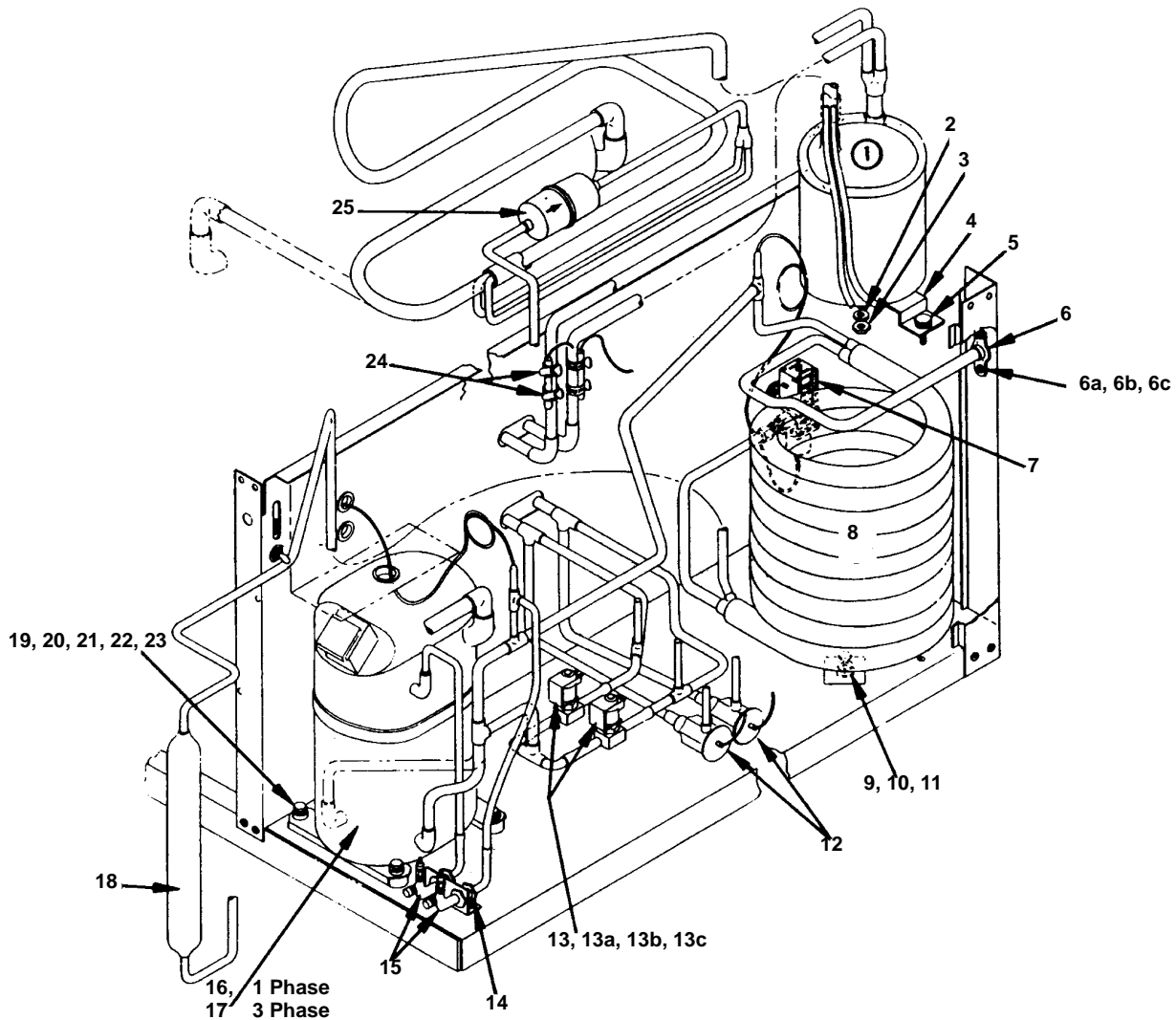
*Compressor Start Components are NOT Interchangeable

| G-1700 50 HZ PARTS | PART NO. |
|---|-----------------|
| Compressor 50 Hz 1 Phase 220-240V | † 76-2827-3 |
| Starting Relay | See Page 8 |
| Start Capacitor | See Page 8 |
| Run Capacitor | See Page 8 |
| Compressor 50 Hz 3 Phase 380-415V | † 76-2828-3 |
| Water Pump with Mounting Bracket & Cover | † 76-2601-3 |
| Unitized Sensor Board | † 76-2396-3 |

REMAINING PARTS ARE SAME AS USED ON 60 HZ CUBER.

† Refer to Cross Reference Guide

G-1700 COMPRESSOR COMPARTMENT WATER-COOLED



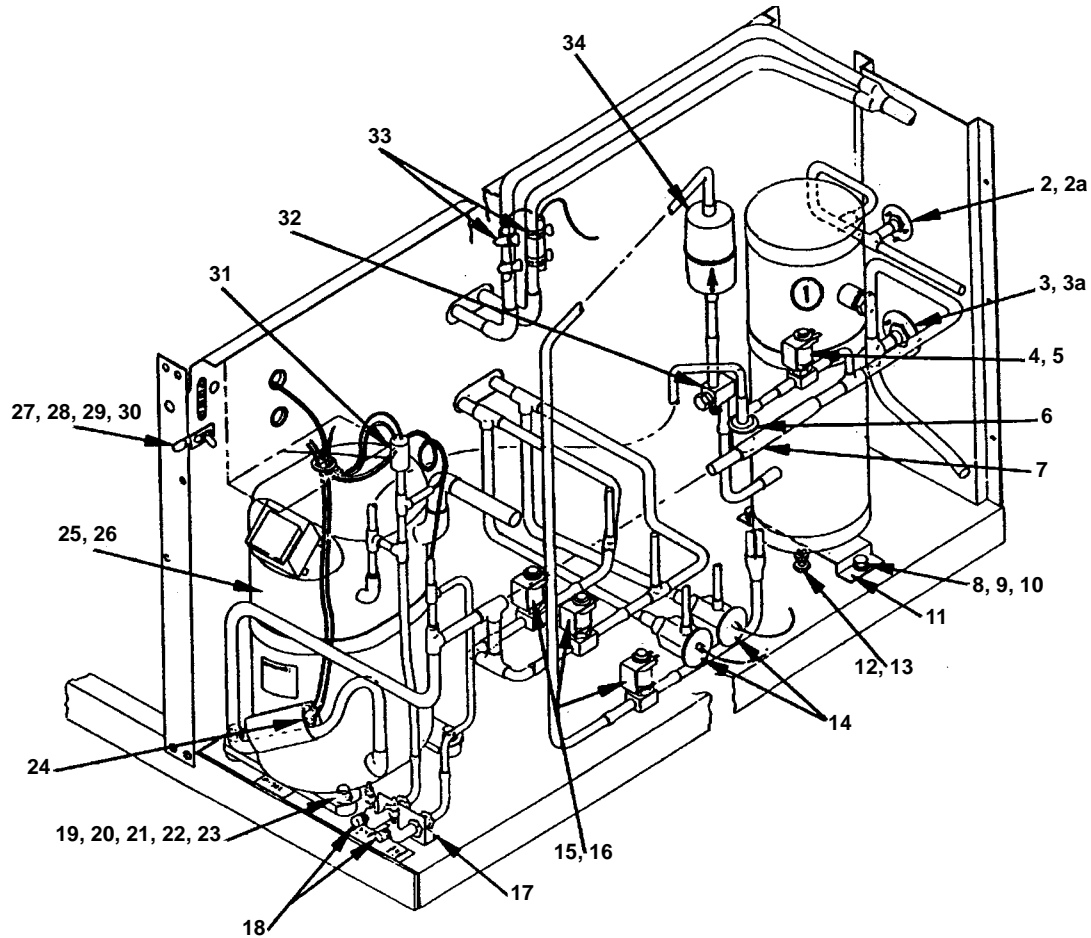
1253

| | PART NO. | | PART NO. |
|---|-------------|---|-------------|
| 1 Accumulator Not Used After SN 870860000 | † 89-0009-3 | 14 Palnut (Mounting process valve) | † 54-7503-9 |
| 2 Lockwasher 3/8"(Mounting accumulator) | † 55-4514-9 | 15 High & Low Side Process Valve | † 83-7310-9 |
| 3 Hex Nut 3/8" (Mounting accumulator). | † 54-3002-9 | 16 Compressor Assembly 1 Phase 60 Hz 220V. | † 76-2825-3 |
| 4 Bracket (Mounting accumulator) | 622491-4 | (For electrical starting components, See Page 8) | |
| 5 Machine Screw 3/8" - 16 x 1-3/4" | † 50-3764-9 | 16a Compressor Crankcase Heater (For Bristol) | 85-0391-3 |
| 6 Water Adapter | 17-0602-1 | 17 Compressor Assembly 3 Phase 60 Hz 220V | † 76-2826-3 |
| 6a Screw #8-32 x 1/2" Phil D | † 50-2624-9 | (For electrical starting components, See Page 8) | |
| 6b Lockwasher #8 | † 55-4459-9 | 18 Receiver | 89-0035-3 |
| 6c Hex Nut #8-32 | † 54-2906-9 | 19 Grommet | † 85-0306-9 |
| 7 Water Regulator Valve | 83-7208-3 | 20 Sleeve | † 85-0394-9 |
| 8 Water Condenser | 88-6513-3 | 21 Flat Washer 3/8" ID x 7/8" OD | † 55-7309-9 |
| 9 Flatwasher 9/32" ID x 1" OD | † 55-7317-9 | 22 Lockwasher 3/8" | † 55-4514-9 |
| 10 Lockwasher 1/4" | † 55-4510-9 | 23 Machine Screw 3/8" - 16 x 1-3/4" | † 50-3764-9 |
| 11 Machine Screw 1/4"-20 x 5/8" | † 50-3345-9 | 24 Worm Drive Clamp (Mounting expansion valve bulb) | † 56-5052-9 |
| 12 Expansion Valve | † 76-2202-3 | 25 Drier | 89-3024-9 |
| 13 Hot Gas Solenoid Valve Up to SN 87086000 | 24-0433-3 | | |
| 13a Hot Gas Solenoid Valve After SN 870860000 | 76-3010-1 | | |
| 13b Coil Only for 24-0433-3 Alco. | † 24-0448-3 | | |
| 13c Coil Only for 76-3010-1 Alco. | † 24-0448-3 | | |

NOTE: FOR 50 HZ PARTS, SEE PAGE 3

† Refer to Cross Reference Guide

G-1700 REMOTE UP TO SN 870860000



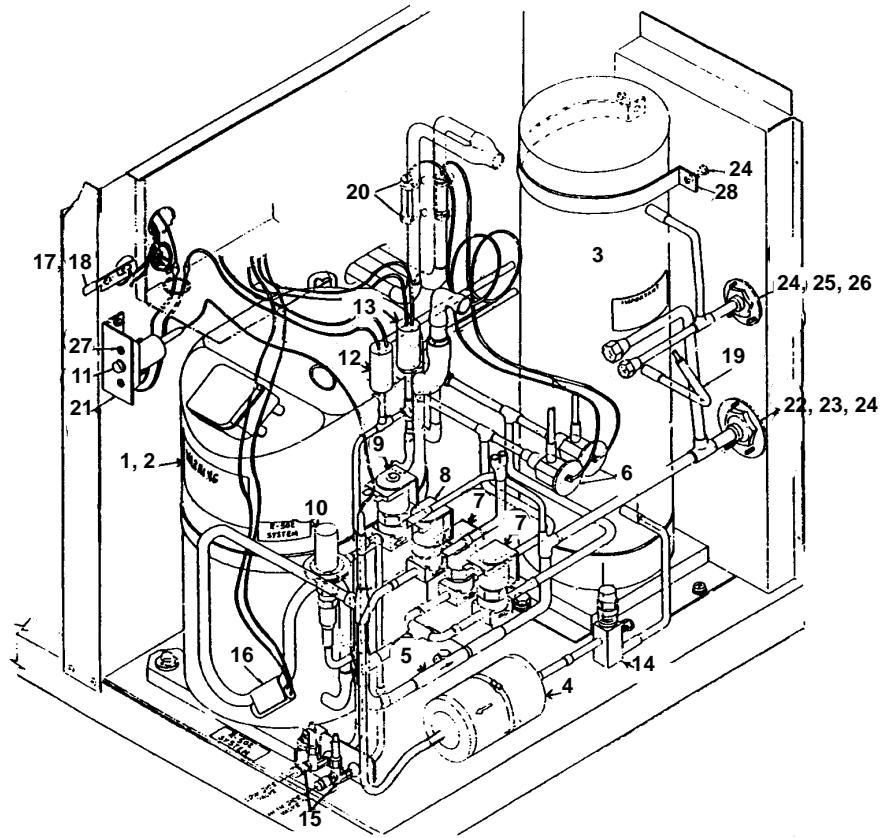
1254

| | PART NO. | | PART NO. |
|---|-------------|--|---------------------|
| 1 Receiver | † 76-2327-3 | 19 Grommet | † 85-0306-9 |
| 2 Male Coupling Assembly 3/8" | † 83-6036-3 | 20 Sleeve | † 85-0394-9 |
| 2a Male Coupling Mounting Flange 1/2" | 83-6018-3 | 21 Flat Washer 3/8" ID x 7/8" OD | † 55-7309-9 |
| 3 Male Coupling Assembly 1/2" | † 83-6037-3 | 22 Lockwasher 3/8" ID | † 55-4514-9 |
| 3a Male Coupling Mounting Flange 3/4" | 83-6017-3 | 23 Machine Screw 3/8" - 16 x 1-3/4" | † 50-3764-9 |
| 4 Harvest Assist Solenoid Valve 208/230V 50/60 Hz (Danfoss) | † 76-3008-1 | 24 Heater (Discharge line) | † 76-2013-3 |
| 5 Harvest Assist Solenoid Valve Coil (Only) (For Valve 76-3008-1) Alco | † 24-0448-3 | 25 Compressor Assembly 1 Phase 60 Hz 230V | † 76-2825-3 |
| 6 HPR Valve Up To SN 870860000 | † 83-6756-3 | (For electrical starting components, See Page 8) | |
| 6a HPR Valve After SN 870860000 | 83-6731-3 | 25a Compressor Crankcase Heater (For Bristol) | 85-0391-3 |
| 7 Magni-check Valve | † 83-7315-9 | 26 Compressor Assembly 3 Phase 60 Hz 230V | † 76-2826-3 |
| 8 Flat Washer 3/8" ID x 7/8" OD | † 55-7309-9 | (For electrical starting components, See Page 8) | |
| 9 Lockwasher 3/8" | † 55-4514-9 | 27 Toggle Switch Lever | 624381-4 |
| 10 Machine Screw 3/8" - 16 x 7/8" | † 50-3767-9 | 28 Toggle Switch | † 23-0084-9 |
| 11 Mounting Bracket (For receiver 89-0034-3) | 608681-4 | 29 Brass Stud (Mounting item 27) | † 50-1308-9 |
| 12 Lockwasher 1/2" | † 55-4518-9 | 30 Toggle Switch End Cap | † 43-0045-9 |
| 13 Hex Nut 1/2" | † 54-3052-9 | 31 Suction Pressure Switch | No Longer Available |
| 14 Expansion Valve | † 76-2202-3 | 32 Service Valve (For receiver) | † 83-7316-9 |
| 15 Solenoid Valve Up To SN 870860000 | 24-0433-3 | 33 Worm Drive Clamp (Mounting expansion valve bulb) | † 56-5052-9 |
| 15a Solenoid Valve After SN 870860000 | 76-3010-1 | 34 Drier | † 89-3024-9 |
| 16 Coil Only For 24-0433-3 Alco | † 24-0448-3 | | |
| 16a Coil Only For 76-3010-1 Alco | † 24-0448-3 | | |
| 17 Palnut (Mounting process valve) | † 54-7503-9 | | |
| 18 High and Low Side Process Valve | † 83-7310-9 | | |

NOTE: FOR 50 HZ PARTS, SEE PAGE 3

† Refer to Cross Reference Guide

G-1700 REMOTE AFTER SN 870860000

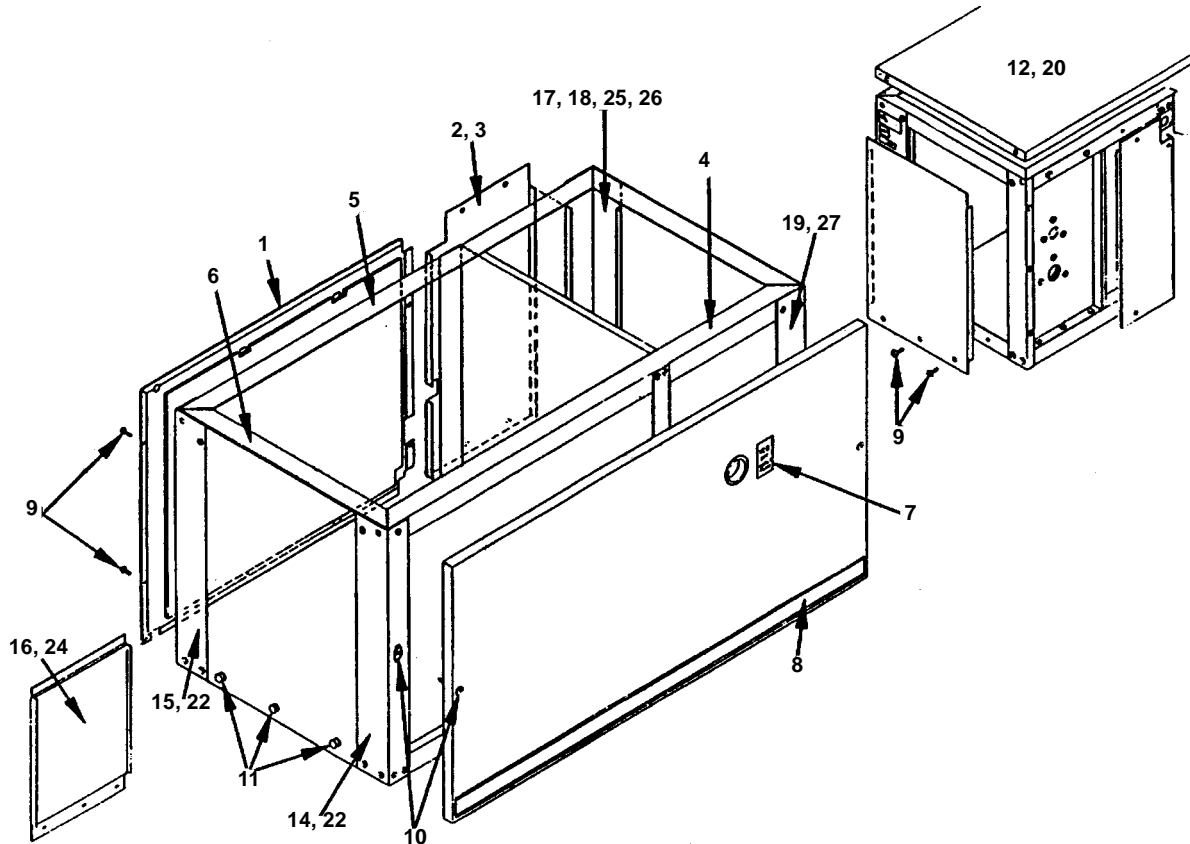


1255

| | PART NO. |
|--|---------------------|
| 1 Compressor, 1 Ph, 60 Hz 230V | † 76-2825-3 |
| 2 Compressor, 3 Ph, 60 Hz 230V | † 76-2826-3 |
| 3 Receiver | † 76-2327-3 |
| 4 Drier | † 89-3024-9 |
| 5 Magni-check Valve | † 83-7315-9 |
| 6 Expansion Valve | † 76-2202-3 |
| 7 Hot Gas Solenoid Valve | 76-3010-1 |
| 8 Solenoid Valve (Pump down) | 24-0433-3 |
| 9 Harvest Solenoid Valve 208/230V 50/60 Hz (Danfoss) | † 76-3008-1 |
| 10 Harvest Pressure Regulating Valve | 83-6731-3 |
| 11 High Pressure Control | † 23-5524-3 |
| 12 Low Pressure Control | 23-5527-3 |
| 13 Suction Pressure Switch | No Longer Available |
| 14 Receiver Service Valve | † 83-7316-9 |
| 15 Process Valve | † 83-7310-9 |
| 16 Heater on Discharge Line | † 76-2013-3 |
| 17 Toggle Switch | † 23-0084-9 |
| 18 Toggle Switch Lever | 624381-4 |
| 19 Safety Soft Plug | † 628451-9 |
| 20 Worm Drive Clamp | † 56-5052-9 |
| 21 Mounting Bracket, High Pressure Control | 627701-4 |
| 22 Male Coupling 1/2" | † 83-6037-3 |
| 23 Coupling Flange | 83-6018-3 |
| 24 Screw, #10-24 | † 52-0206-9 |
| 25 Male Coupling 3/8" | † 83-6036-3 |
| 26 Coupling Flange | 83-6017-3 |
| 27 Screw, #8 x .75" | † 51-2166-9 |
| 28 Receiver Strap | 629511-4 |

† Refer to Cross Reference Guide

G-1700 OUTER PANELS



1256

COMMON PARTS

| | PART NO. |
|--|-----------------|
| 1 Back Panel Assembly | 76-2217-3 |
| 2 Back Panel - Remote | 662721-4 |
| 3 Back Panel - Water-cooled | 662711-4 |
| 4 Front Rail | † 665361-4 |
| 5 Rear and Right Hand Rail | 686561-4 |
| 6 Left Hand End Rail | † 629021-4 |
| 7 Toggle Switch Label | 81-3124-3 |
| 8 Label Trim (Front panel) | 81-3184-3 |
| 9 Screw For Mounting Outer Panels (#10-24 x 3/8") | † 52-0210-9 |
| 10 Front Panel Mounting Screw & Cage Nut | 76-2226-3 |
| 10a Spacer For Front Panel | † 37-1819-9 |
| 11 Thumbscrew Used On Left Hand End Panel | † 50-1209-9 |

OUTER PANELS - FAWN

| | |
|--|---------------------|
| 12 Top Cover | 686631-4 |
| 13 Front Panel - Water-cooled | 76-2296-3 |
| Front Panel - Remote | 76-2298-3 |
| 14 Left Hand Front Column Assembly | No Longer Available |

PART NO.

| | PART NO. |
|---|---------------------|
| 15 Left Hand Rear Column Assembly | No Longer Available |
| 16 Right Hand & Left Hand End Panel | 76-2219-3 |
| 17 Right Hand Rear Column - Water-cooled | 662561-4 |
| 18 Right Hand Rear Column - Remote | 662731-4 |
| 19 Right Hand Front Column | 662571-4 |
| OUTER PANELS - STAINLESS STEEL | |
| 20 Top Cover | 686632-4 |
| 21 Front Panel - Water-cooled | 76-2297-3 |
| Front Panel - Remote | 76-2299-3 |
| 22 Left Hand Front Column Assembly | 76-2221-3 |
| 23 Left Hand Rear Column Assembly | 76-2220-3 |
| 24 Right Hand & Left Hand End Panel | 76-2218-3 |
| 25 Right Hand Rear Column - Water-cooled | 662562-4 |
| 26 Right Hand Rear Column - Remote | 662732-4 |
| 27 Right Hand Front Column | 662572-4 |

G-1700 CARTON GROUP

| | PART NO. |
|---------------------------|-----------------|
| Carton Assembly | † 71-0825-9 |

† Refer to Cross Reference Guide

COMPRESSOR COMPONENTS FOR G-1700

230V/60 HZ/1 PH

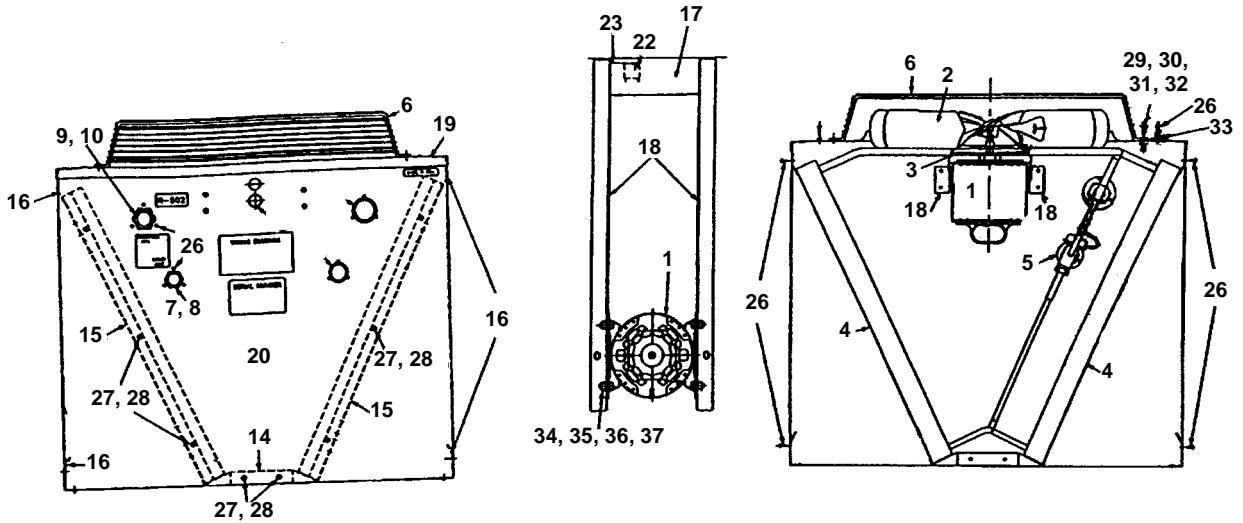
| Compressor Model Number | Start Relay | Start Capacitor | Run Capacitor |
|--------------------------------|------------------------|----------------------------|--------------------------|
| Bristol | 85-0379-3 | 85-0384-3 | † 20-1013-3 |
| Tecumseh AV5546E | † 85-0367-3 | † 85-0316-3 | 85-0368-3 |
| Tecumseh AVA7528ZXN | 20-0751-9 | 85-0552-3 | 000001395 |

230V/50 HZ/1 PH

| Compressor Model Number | Start Relay | Start Capacitor | Run Capacitor |
|--------------------------------|------------------------|----------------------------|--------------------------|
| Bristol | 85-0380-3 | † 85-0316-3 | † 20-1013-3 |
| Tecumseh | | | |

† Refer to Cross Reference Guide

REMOTE CONDENSER AC-1796B

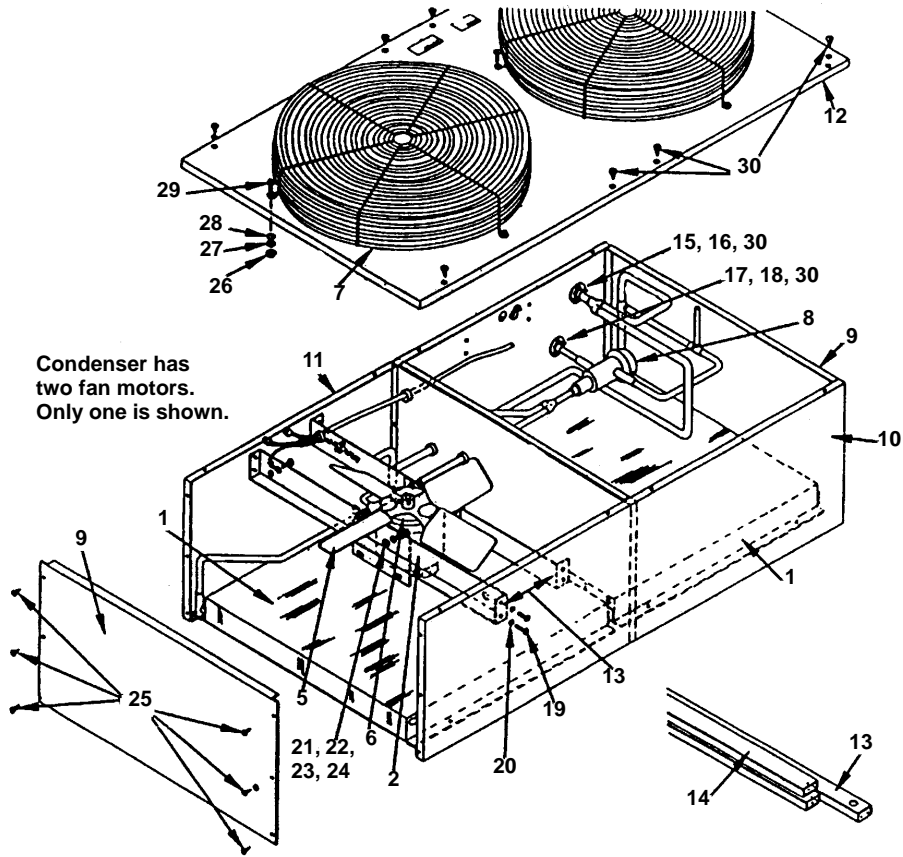


1257

| | PART NO. |
|--|---------------------|
| 1 Fan Motor, 230V 50/60 Hz | † 76-2941-3 |
| 1a Run Capacitor | No Longer Available |
| 2 Fan Blade | 24-1611-3 |
| 3 Rain Slinger | 24-1505-3 |
| 4 Air Condenser (Uses 2) | † 88-5062-9 |
| 5 Headmaster Control | † 83-6806-9 |
| 6 Fan Guard | 34-0064-3 |
| 7 Male Coupling | † 83-6036-3 |
| 8 Coupling Flange for 83-6036-3 | 83-6018-3 |
| 9 Male Coupling | † 83-6037-3 |
| 10 Coupling Flange for 83-6037-3 | 83-6017-3 |
| 11 Hole Plug for 7/8" Hole | 43-0146-3 |
| 12 Hole Plug for 1-3/16" Hole | † 43-0139-9 |
| 13 Hole Plug for 1.5" Hole | † 43-0215-9 |
| 14 Base | 601779-1 |
| 15 Condenser Mounting Angle | 601777-1 |
| 16 Support Bracket | † 601778-1 |
| 17 Electrical Box Cover | † 601776-1 |
| 18 Base Bracket for Mounting Fan | † 601768-1 |
| 19 Top Cover | 601789-1 |
| 20 Front Panel | † 601794-1 |
| 21 Back Panel (Not shown) | † 601788-1 |
| 22 Relay | 24-0819-3 |
| 23 Relay Mounting Bracket | 600000-1 |
| 24 Transformer (Not shown) | 24-1027-3 |
| 25 Electrical Junction Box (Not shown) | 25-1501-3 |
| 26 Screw, #10-24 x .62" | † 52-0205-9 |
| 27 Screw, #8 x .50" | † 51-2153-9 |
| 28 Lockwasher, #8 | † 55-4459-9 |
| 29 Screw, .25" x .62" | † 50-3345-9 |
| 30 Lockwasher .25" Split SS | † 55-4511-9 |
| 31 Washer - Flat .25" SS | † 55-7304-9 |
| 32 Nut .25 Steel Hex | † 54-2952-9 |
| 33 Lockwasher #10 | † 55-4464-9 |
| 34 Screw, .31"-18 x .62" Lg. Hex Head | † 50-3565-9 |
| 35 Nut .31-18 Steel Hex Head | † 54-2975-9 |
| 36 Washer, Flat .31" ID | † 55-7309-9 |
| 37 Lockwasher, .31" Split | † 55-7313-9 |

† Refer to Cross Reference Guide

REMOTE CONDENSER AC-1795



1258

AC-1795 REMOTE CONDENSER ENDING SN 860791426

| | PART NO. |
|---|---------------------|
| Fan Motor (2 per) | † 76-1984-3 |
| Fan Motor Bracket (Single mount) | † 652882-4 |
| Fan Blade (Single bracket mount) | 24-1604-3 |
| Fan Blade (Dual bracket mount) | 24-1611-3 |
| Rain Shield | No Longer Available |
| Run Capacitor (Single bracket mount) | 24-1502-3 |
| Run Capacitor (Dual bracket mount) - Emerson | 85-0335-3 |
| Run Capacitor (Dual bracket mount) - Magnatec | No Longer Available |
| Electrical Cover | 662441-4 |

AC-1795 REMOTE CONDENSER STARTING WITH SN 861092727

| | PART NO. | | PART NO. |
|---|---------------------|---|-----------------|
| 1 Air Condenser (Uses 2) | † 88-5062-9 | 17 Coupling 1-1/8" Thread x 3/8" Tube .. | † 83-6036-3 |
| 2 Fan Motor, 60 Hz 230V (2 per) | † 76-2941-3 | 18 Coupling Mounting Flange | 83-6018-3 |
| 3 Run Capacitor (Emerson) | 85-0335-3 | 19 Screw, #8-32 x 1/2" | † 50-2624-9 |
| 3a Run Capacitor (Magnatec) ... | No Longer Available | 20 Lockwasher #8 | † 55-4459-9 |
| 4 Fan Motor, 50 Hz 230V (2 per) | † 76-2941-3 | 21 Screw, 5/16"-18 | † 50-3565-9 |
| 5 Fan Blade (2 per) | 24-1611-3 | 22 Flatwasher 5/16" | † 55-7309-9 |
| 6 Rain Shield | 24-1505-3 | 23 Lockwasher 5/16" | † 55-7313-9 |
| 7 Fan Guard | 34-0064-3 | 24 Hex Nut 5/16" - 18 | † 54-2975-9 |
| 8 Head Pressure Control | † 83-6806-9 | 25 Screw, #8 x 1/2" | † 51-2153-9 |
| 9 RH & LH End Panel | 76-2231-3 | 26 Hex Nut 1/4" x 20 | † 54-2952-9 |
| 10 Front Panel | 663681-4 | 27 Lockwasher 1/4" | † 55-4511-9 |
| 11 Rear Panel | 76-2229-3 | 28 Flatwasher 1/4" | † 55-7304-9 |
| 12 Top Cover | 76-2230-3 | 29 Screw, 1/4"-20 x 5/18" | † 50-3345-9 |
| 13 Base Bracket | † 601768-1 | 30 Screw, #10-24 x 5/8 | † 52-0205-9 |
| 14 Condenser Legs | † 601769-1 | 31 Female Coupling Kit (Used on fine set only) (Not shown) | 07-0066-3 |
| 15 Coupling 1-7/16" Thread x 5/8" Tube .. | 83-6038-3 | | |
| 16 Coupling Mounting Flange | 83-6017-3 | | |

† Refer to Cross Reference Guide