



**Ice Machine Parts List for
Series J0200 Models**

JR0200A

JD0203W

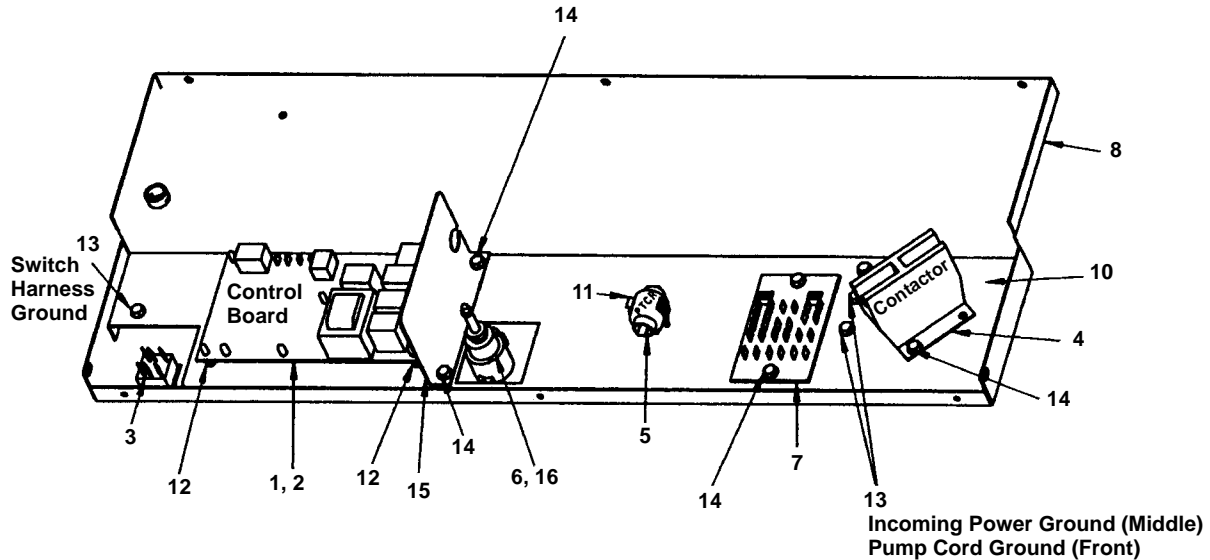
JR0201W

JY0204A

JD0202A

JY0205W

J0200 CONTROL BOX

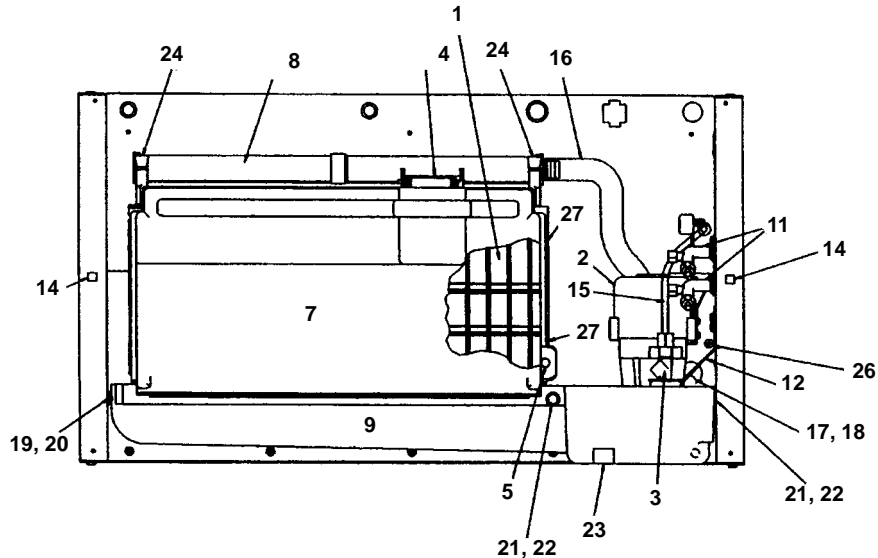


DESCRIPTION

DESCRIPTION	PART NO.
1 Control Board (For use with all voltages)	† 76-2782-3
2 Fuses – Mounted On Control Board	
a. 7 Amp	25-1100-3
b. .125 Amp 60 Hz Mini Fuse	† 25-1116-9
c. .100 Amp 50 Hz Mini Fuse	25-1105-3
3 Toggle Switch only	23-0134-3
a. Toggle Switch with Wiring Harness Attached	20-3217-3
4 Contactor	
a. 115V/60 Hz/1 Ph	† 20-0658-9
b. 208-230V/60 Hz/1 Ph or 230V/50 Hz/1 Ph	20-0659-9
5 P.T.C.R. Compressor Starter	85-0500-3
6 High Pressure Cut Out	† 23-5536-9
7 Terminal Board with Wire Harness Attached	
a. 60 Hz	20-3215-3
b. 50 Hz	20-3216-3
Miscellaneous – Brackets, Screws, etc.	
8 Control Box	† 601408-1
9 Control Box Cover (Not shown)	† 601409-1
10 Control Box Panel	601966-1
11 P.T.C.R. Compressor Starter Mounting Bracket	85-0502-3
12 Control Board Mounting Supports	43-0225-3
13 Screw, #10-24 x .50 Ground	† 52-0216-9
14 Screw, #10-24 x .50 Hex Head	† 52-0206-9
15 Control Box Shield	601967-1
16 Screw, #8 x 3/4"	† 51-2166-9

† Refer to Cross Reference Guide

J0200 EVAPORATOR COMPARTMENT

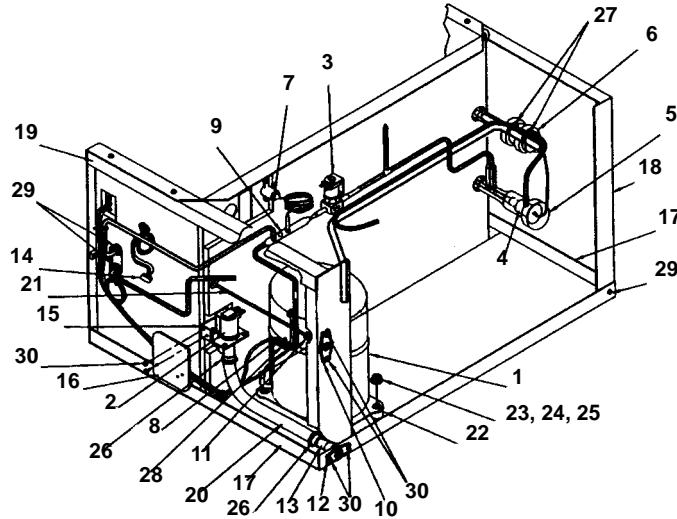


1372

DESCRIPTION		PART NO.
1 Evaporator Assembly		
a. Regular Cube	†	76-2585-9
b. Dice Cube	†	76-2584-9
c. Half Dice Cube	†	76-2658-9
d. Gasket And Top Molding Assembly		76-2621-3
2 Water Pump		
a. 115V/60 Hz	†	76-2306-3
b. 208-230V/60 Hz or 230V/50 Hz	†	76-2601-3
3 Float Valve (Complete Assembly)		
a. Float Valve Screen	†	83-6904-9
b. Float Valve Plunger	†	83-6906-9
c. Float Valve Compression Nut	†	83-6908-9
4 Ice Thickness Control		
a. Ice Thickness Control	†	56-5072-9
5 Magnetic Bin Switch (Mounted to Evaporator)		
a. Magnetic Bin Switch	†	76-2781-3
6 Water Flow Clamp (Use on Regular Cube Evap. Only)		
a. Water Flow Clamp	†	23-0148-3
7 Water Curtain		
a. Water Curtain		76-2054-3
b. Water Curtain Hanger		40-0478-3
c. Water Curtain Magnet And Clip	†	76-2776-3
8 Water Distribution Tube		
a. Water Distribution Tube	†	76-2802-3
9 Water Trough		
a. Water Trough	†	76-2498-3
10 High Pressure Cut-out (Refrigeration System – Not shown)		
a. High Pressure Cut-out	†	76-2748-3
11 Refrigeration Service Valve Assembly		
a. Refrigeration Service Valve Assembly	†	23-5536-9
Miscellaneous – Brackets, Screws, etc.		
12. Float Valve Mounting Bracket	†	83-7310-9
13. Control Box Cover (Not shown)		76-2140-3
14. Cage Nut	†	601409-1
15. Tubing, Vinyl .25 OD (Water Inlet)		54-2910-9
16. Tubing, Vinyl (Water Pump Out)		44-2029-1
17. Reducing Tee (Rubber)		44-2096-3
18. Union Connector (White Nylon)		43-0057-3
19. Water Trough Support Pin (Order Nylon Hex Nut Separately)	†	83-9005-3
20. Water Trough Support Pin Nylon Hex Nut	†	43-0201-9
21. Clip-In Receptacle (Female Side)		54-2945-9
22. Clip-In Receptacle Wing Nut (Male Side)		56-5085-3
23. Water Trough Support Clip	†	56-5086-3
24. Screw, #8-32 x .63 Nylon-Water Distribution Tube Mounting	†	76-2704-3
25. Screw, Used to Mount High Pressure Cut-out (Not shown)	†	50-0001-3
26. Screw, #10-24 x .50	†	51-2166-9
27. Screw, #10-24 x .750, Used to Mount Evaporator	†	52-0206-9
		52-0218-9

† Refer to Cross Reference Guide

J0200 COMMON PARTS



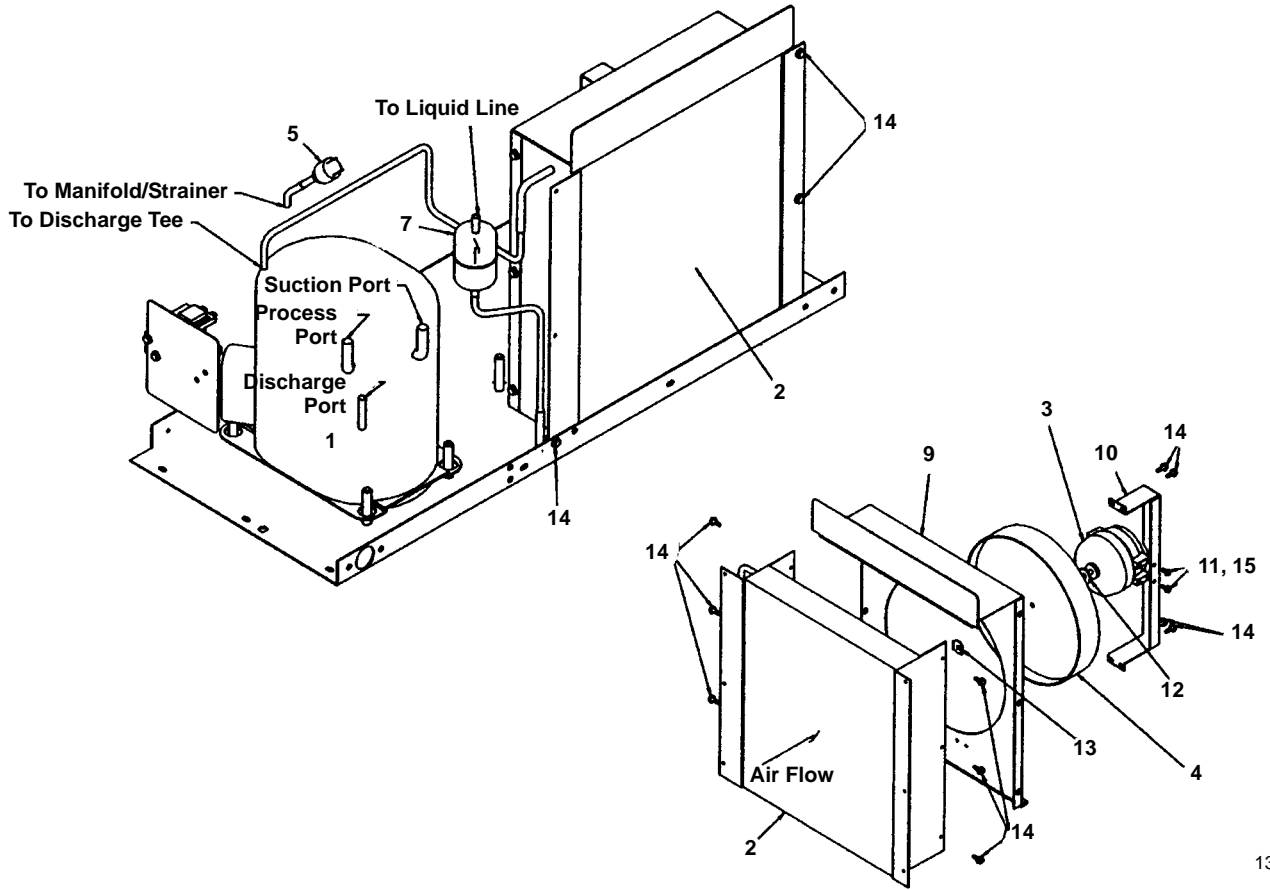
1373

DESCRIPTION

		PART NO.
1	Compressor	
	a. 115V/60 Hz/1 Ph	† 76-2752-3
	b. Overload for Compressor 76-2752-3.	85-0541-3
	c. 208/230V/60 Hz/1 Ph	† 76-2754-3
	d. Overload for Compressor 76-2754-3.	85-0542-3
	e. 230V/50 Hz/1 Ph	† 76-2753-3
2	Water Dump Valve	
	a. Dump Valve Rebuild Kit.	No Longer Available
	b. Dump Valve, 115V	000001767
	c. Dump Valve, 208/230V 50/60 Hz	000001768
3	Hot Gas Valve	
	a. Hot Gas Valve Including 115V Coil 60 Hz (Danfoss)	† 76-3001-1
	b. Hot Gas Valve 115V Coil Only Danfoss.	000002048
	c. Hot Gas Valve 115V Coil Only Alco.	24-0436-3
	d. Hot Gas Valve Including 208/230V 50/60 Hz Coil (Danfoss)	† 76-3007-1
	e. Hot Gas Valve 208/230V 50/60 Hz Coil Only Danfoss	000002049
	f. Hot Gas Valve 208/230V 50/60 Hz Coil Only Alco	† 24-0448-3
4	Expansion Valve	† 76-2583-3
5	Expansion Valve Body Insulation Boot	40-0721-3
6	Expansion Valve Bulb Insulation Boot	40-0720-3
7	High Pressure Cut-out Control	† 23-5536-9
8	Thermistor	23-5116-3
9	Manifold Strainer	83-1016-3
10	Water Inlet Female Wing Adapter	† 87-0609-3
11	Water Inlet Union (Compression Nut)	13-6096-1
12	Water Drain Female Wing Adapter	17-0602-1
13	Water Drain Copper Tube Insert	11048-1
14	Water Pump Electrical Wire Lead	† 20-7810-3
	Miscellaneous – Brackets, Screws etc.	
15	Dump Valve Mounting Bracket	626031-4
16	Dump Valve Shield (Used on Air-Cooled Models Only)	† 70-0062-3
17	Base Angle	† 601287-1
18	Left Corner Post Weldment	600926-1
19	Right Corner Post Weldment	600926-2
20	Water Drain Vinyl Tubing, .625 ID.	† 44-2038-3
21	Water Inlet Vinyl Tubing, .25 ID	44-2029-3
22	Compressor Mounting Rubber Grommet	† 85-0306-9
23	Compressor Mounting Sleeve (Inserts into Grommet)	† 85-0394-9
24	Compressor Mounting Nut	† 54-3002-9
25	Compressor Mounting Washer	† 55-7309-9
26	Clamp, Water Drain	† 56-5070-9
27	Clamp, Expansion Valve Bulb	† 56-5052-9
28	Clamp, Thermistor	56-5077-3
29	Locknut, Used to Fasten Refrigerant Service Valves	† 54-7503-9
30	Screw, #10-24 x .50	† 52-0206-9

† Refer to Cross Reference Guide

J0200 AIR-COOLED



1374

DESCRIPTION

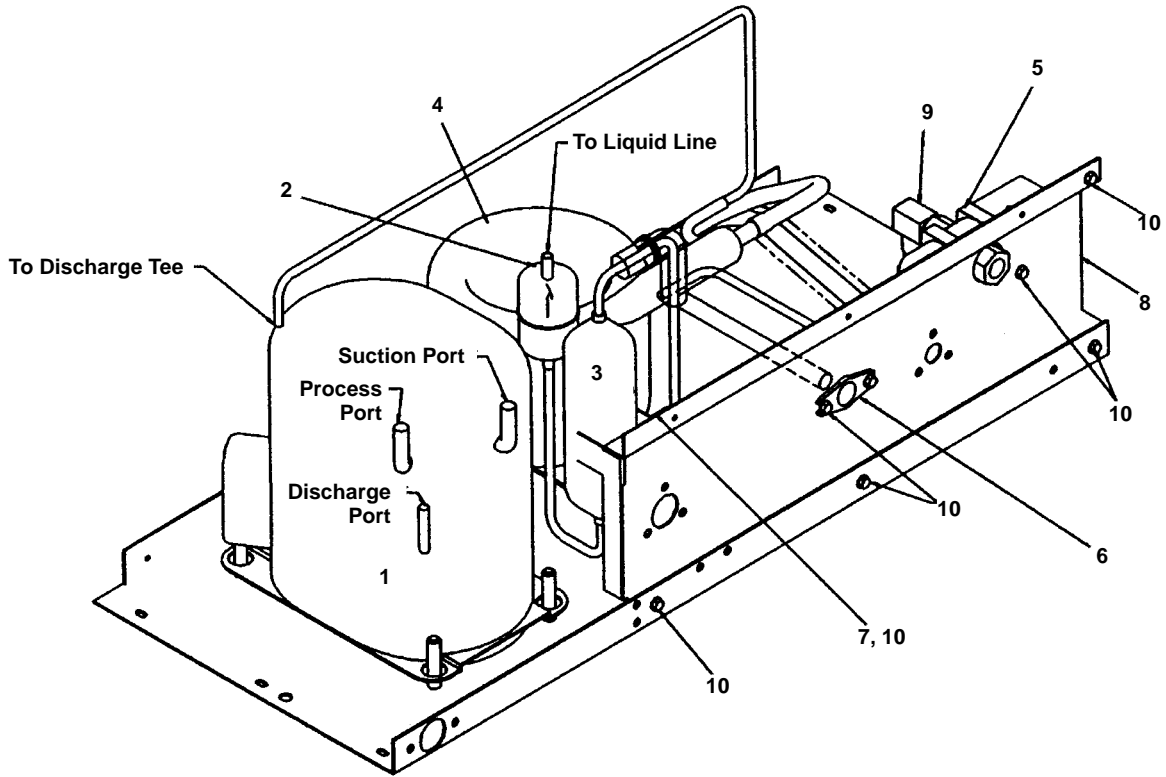
	PART NO.
1 Compressor (Refer to COMMON PARTS)	Page 4
2 Air Condenser	88-5085-3
3 Fan Motor	
a. 115V	† 24-1287-3
b. 208-230V/60 Hz or 230V/50 Hz	† 24-1288-3
4 Fan Blade	24-1624-3
5 Fan Cycling Control	† 20-0126-3
6 Air Filter (Not shown)	40-4012-3
7 Drier	† 89-3025-9

Miscellaneous – Brackets, Screws, etc.

8 Air Filter Bracket (Not shown)	† 76-2686-3
9 Fan Shroud	600944-1
10 Fan Motor Mounting Bracket	600810-1
11 Screw, #8-36 x 7/16	† 50-2559-9
12 Fiber Washer	† 55-7335-9
13 Speed Nut	† 54-7507-9
14 Screw, #10-24 x .50	† 52-0206-9
15 Flatwasher	† 55-0426-9

† Refer to Cross Reference Guide

J0200 WATER-COOLED



1375

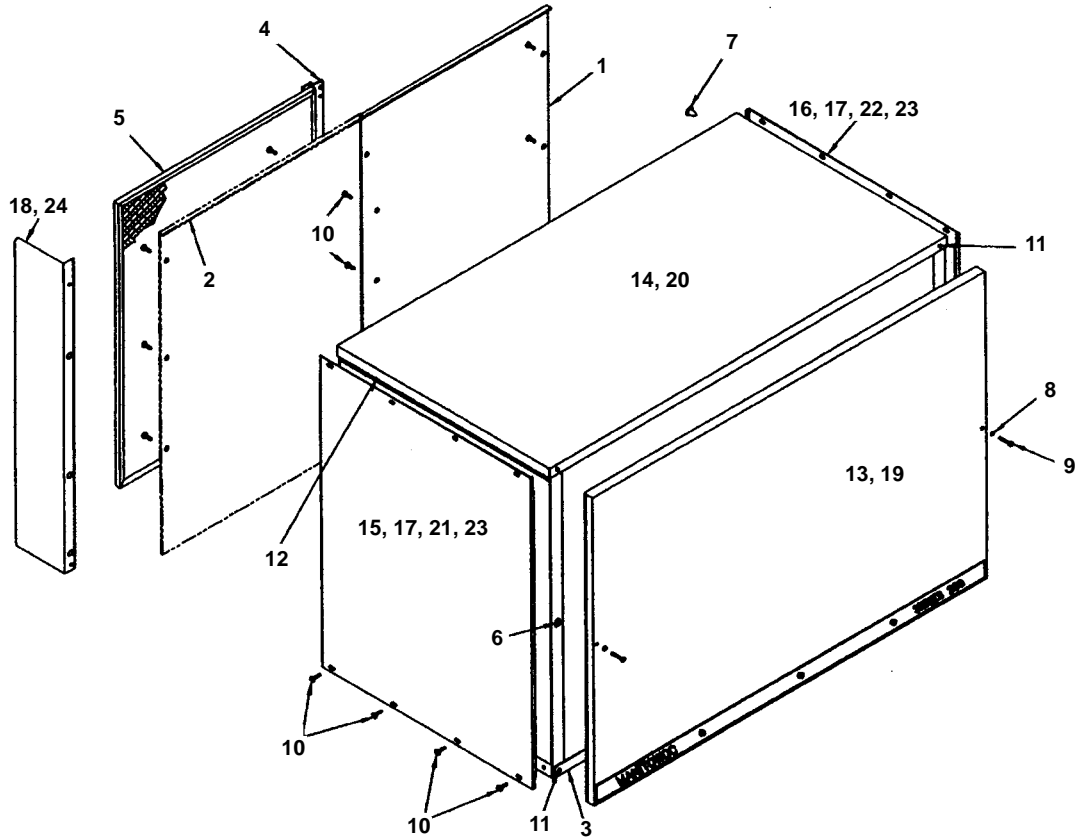
DESCRIPTION

DESCRIPTION	PART NO.
1 Compressor (Refer to COMMON PARTS)	Page 4
2 Drier	† 89-3025-9
3 Receiver	12-0003-1
4 Water-cooled Condenser	† 88-6531-3
5 Water Regulating Valve	† 83-7206-9
6 Water Drain Female Wing Adapter	87-0612-3

Miscellaneous – Brackets, Screws, etc.

7 Receiver Strap	600054-1
8 Back Panel	600057-1
9 Water Coupling	83-0506-3
10 Screw, #10-24 x .50	† 52-0206-9

J0200 PANELS



1376

COMMON

	PART NO.
1 Back Panel, Air-cooled	600945-1
2 Back Panel, Water-cooled	600946-1
3 Front Panel Support	† 658041-9
4 Bracket for Air Filter	† 76-2686-3
5 Air Filter	40-4012-3
6 Cage Nut #8-32	† 54-2910-9
7 Accordion Panel Clip	† 56-4820-9
8 "O" Ring	† 37-1819-9
a. Washer	55-7338-3
9 Screw, #8-32 x 1.50	† 50-2668-9
10 Screw, #10-24 x 1/2	† 52-0206-9
11 Screw, #10-24 x 1/2	† 52-0209-9
12 Extruded Tape	† 92-0250-9

FAWN

13 Front Panel Assembly	76-2277-3
14 Top Cover	600068-1
15 LH Side Panel, Air-cooled	600937-1
16 RH Side Panel, Air-cooled	600938-1
17 RH-LH Panel, Water-cooled	600939-1
18 Air Baffle	600961-1

STAINLESS STEEL

19 Front Panel Assembly	76-2278-3
20 Top Cover	600068-3
21 Side Panel LH, Air-cooled	600937-2
22 RH Side Panel, Air-cooled	600938-2
23 RH & LH Side Panel, Water-cooled	600939-2
24 Air Baffle	600961-2

† Refer to Cross Reference Guide

INTENTIONALLY LEFT BLANK