



**Ice Machine Parts List for
Series J0320 Models**

JR0320A

JD0323W

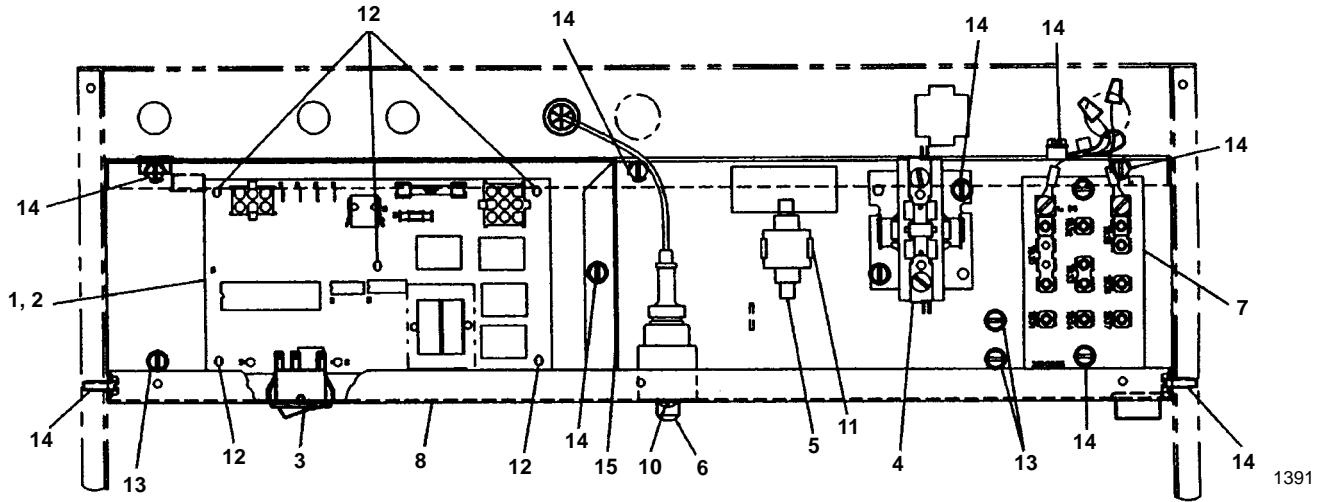
JR0321W

JY0324A

JD0322A

JY0325W

J0320 CONTROL BOX



DESCRIPTION

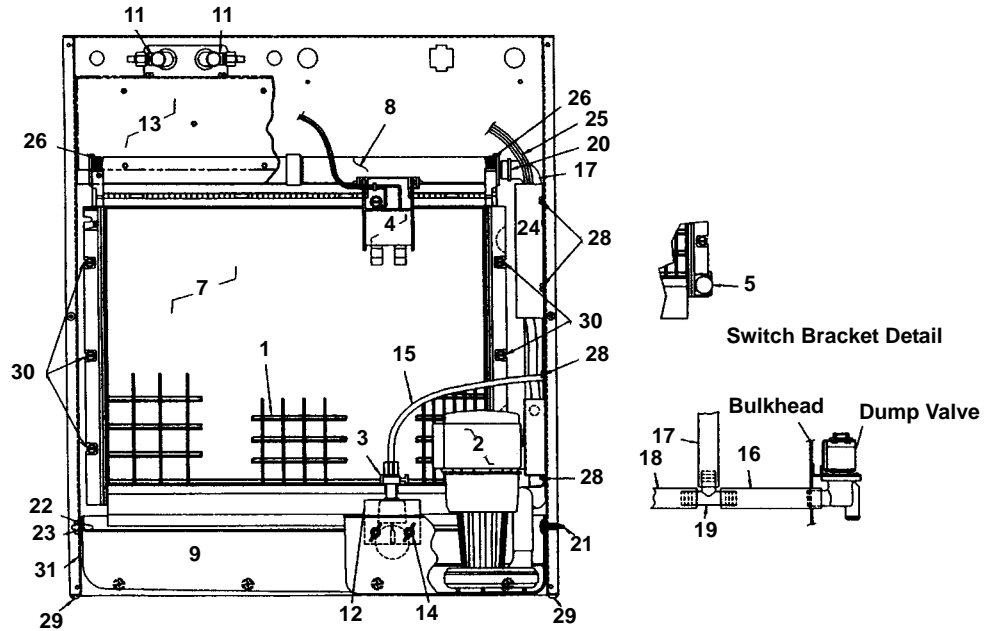
		PART NO.
1	Control Board (For use with all voltages)	† 76-2782-3
2	Fuses – Mounted On Control Board	
	a. 7 Amp	25-1100-3
	b. .125 Amp 60 Hz Mini Fuse	† 25-1116-9
	c. .100 Amp 50 Hz Mini Fuse	25-1105-3
3	Toggle Switch only	23-0134-3
	a. Toggle Switch With Wiring Harness Attached	20-3217-3
4	Contactor	
	a. 115V/60 Hz/1 Ph.	† 20-0658-9
	b. 208-230V/60 Hz/1 Ph or 230V/50 Hz/1 Ph	† 20-0659-9
5	P.T.C.R. Compressor Starter	85-0500-3
6	High Pressure Cut-out	† 23-5536-9
7	Terminal Board With Wire Harness Attached	
	a. 60 Hz	20-3213-3
	b. 50 Hz	20-3214-3

Miscellaneous – Brackets, Screws, etc.

8	Control Box	601919-1
9	Control Box Cover (Not shown)	† 76-2539-3
10	Screw, #8 x .75 Serrated	† 51-2166-9
11	P.T.C.R. Compressor Starter Mounting Bracket	85-0502-3
12	Control Board Mounting Supports	43-0225-3
13	Screw, #10-24 x .50 Ground	† 52-0216-9
14	Screw, #10-24 x .50 Hex Head	† 52-0206-9
15	Control Board Cover	600180-1

† Refer to Cross Reference Guide

J0320 EVAPORATOR COMPARTMENT



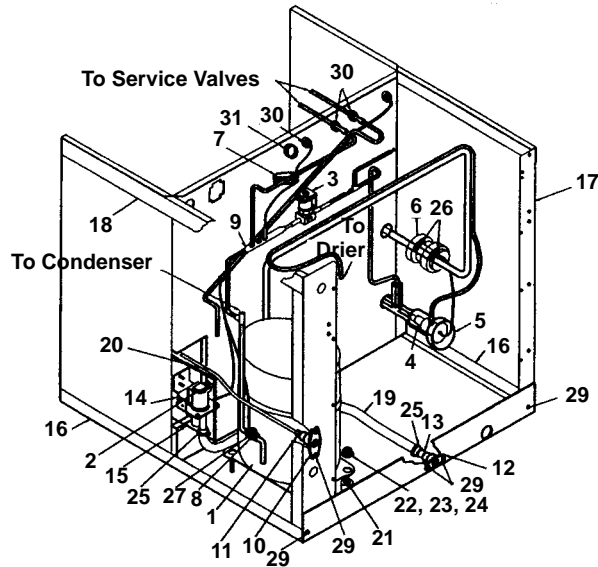
1392

DESCRIPTION

	PART NO.
1 Evaporator Assembly	
a. Regular Cube	† 76-2520-9
b. Dice Cube	† 76-2519-9
c. Half Dice Cube	† 76-2518-9
d. Gasket/Top Molding Assembly	76-2621-3
2 Water Pump	
a. 115V/60 Hz	† 76-2306-3
b. 208-230V/60 Hz or 230V/50 Hz	† 76-2601-3
3 Float Valve (Complete Assembly)	
a. Float Valve Screen	† 83-6904-9
b. Float Valve Plunger	† 83-6906-9
c. Float Valve Compression Nut	† 83-6908-9
c. Float Valve Compression Nut	† 56-5072-9
4 Ice Thickness Control	† 76-2781-3
5 Magnetic Bin Switch (Mounted to Evaporator)	† 23-0148-3
6 Water Flow Clamp (Use on Regular Cube Evap. Only – Not shown)	76-2054-3
7 Water Curtain	† 40-0477-3
a. Water Curtain Hanger	76-2776-3
b. Water Curtain Magnet and Clip	† 76-2802-3
8 Water Distribution Tube	† 76-2498-3
9 Water Trough	600245-1
10 High Pressure Cut-out (Refrigeration System – Not shown)	† 23-5536-9
11 Refrigeration Service Valve Assembly	† 83-7310-9
Miscellaneous – Brackets, Screws, etc.	
12 Float Valve Mounting Bracket	000000136
13 Control Box Cover	† 76-2539-3
14 Wing Nut, #8-32	† 54-8913-9
15 Tubing, Vinyl .25 OD (Water Inlet)	44-2029-1
16 Tubing, Vinyl .625 ID (Tee to Dump Valve)	† 44-2038-3
17 Tubing, Vinyl .625 ID (Tee to Distribution Tube)	† 44-2102-3
18 Tubing, Vinyl .625 ID (Pump to Tee)	† 44-2101-3
19 Barbed Tee	83-9103-3
20 Hose Clamp	† 56-5070-9
21 Thumbscrew – Push-in	† 50-1227-9
22 Water Trough Support Pin (Order Nylon Hex Nut Separately)	† 43-0201-9
23 Water Trough Support Pin Nylon Hex Nut	† 54-2945-9
24 Water Pump Cord Channel	† 601410-1
25 Water Pump Electrical Wire Lead	† 20-7810-3
26 Screw, #8-32 x .63 Nylon-Water Distribution Tube Mounting	† 50-0001-3
27 Screw Used to Mount High Pressure Cut-out (Not shown)	† 51-2166-9
28 Screw, #10-24 x .50	† 52-0206-9
29 Pop Rivet SS	† 57-6877-9
30 Screw, #10-24 x .750, Used to Mount Evaporator	† 52-0218-9
31 Splash Shield	† 76-2624-3

† Refer to Cross Reference Guide

J0320 COMMON PARTS



1393

DESCRIPTION

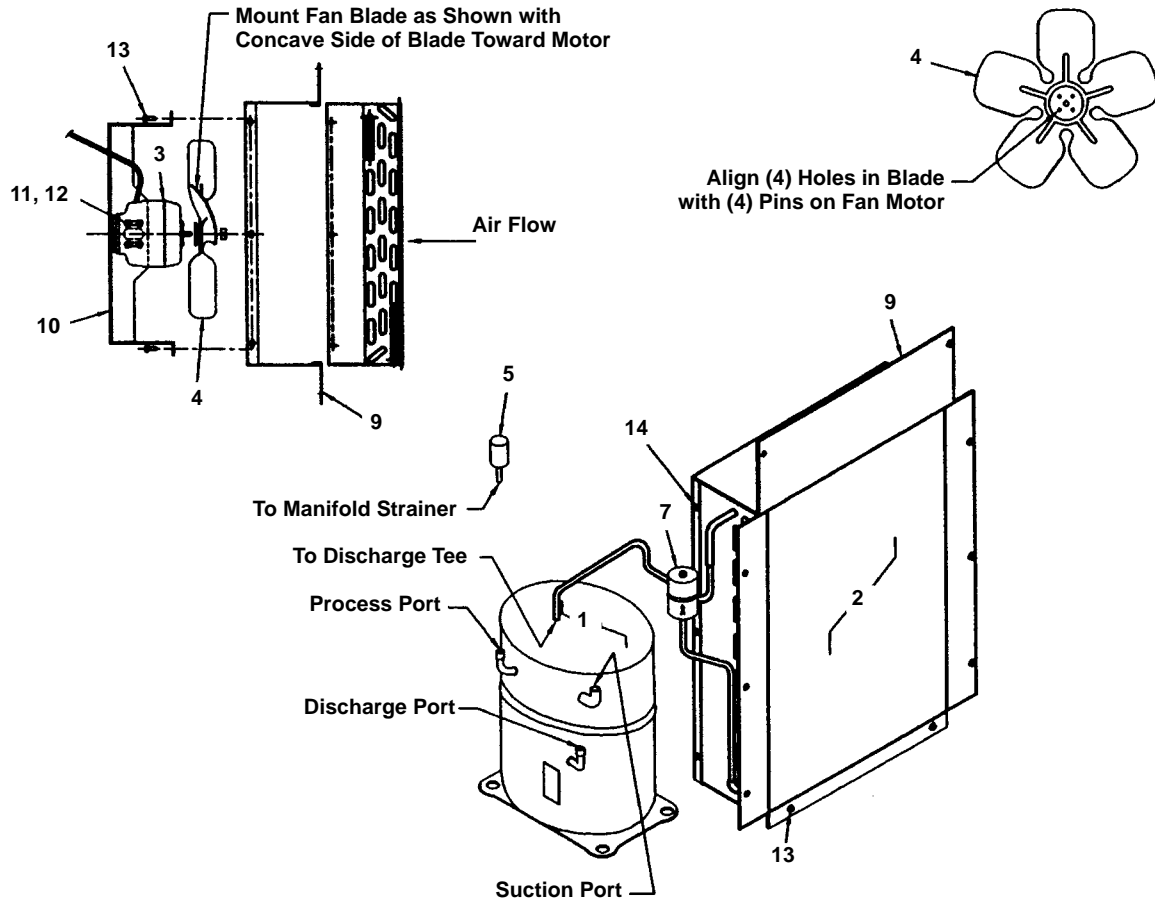
	DESCRIPTION	PART NO.
1	Compressor	
	a. 115V/60 Hz/1 Ph.	† 76-2752-3
	b. Overload for Compressor 76-2752-3	85-0541-3
	c. 208/230V/60 Hz/1 Ph	† 76-2754-3
	d. Overload for Compressor 76-2754-3	85-0542-3
	e. 230V/50 Hz/1 Ph	† 76-2753-3
2	Water Dump Valve	
	a. Dump Valve Rebuild Kit	No Longer Available
	b. Dump Valve, 115V	000001767
	c. Dump Valve, 208/230V 50/60 Hz	000001768
3	Hot Gas Valve	
	a. Hot Gas Valve Including 115V 60 Hz Coil (Danfoss)	† 76-3001-1
	b. Hot Gas Valve 115V Coil Only Danfoss	000002048
	c. Hot Gas Valve 115V Coil Only Alco	24-0436-3
	d. Hot Gas Valve Including 208/230V 50/60 Hz Coil (Danfoss)	† 76-3007-1
	e. Hot Gas Valve 208/230V 50/60 Hz Coil Only Danfoss	000002049
	f. Hot Gas Valve 208/230V 50/60 Hz Coil Only Alco	† 24-0448-3
4	Expansion Valve	† 76-0018-3
5	Expansion Valve Body Insulating Boot	
	a. Alco	40-0721-3
	b. Danfoss	40-0036-3
6	Expansion Valve Bulb Insulating Boot	40-0720-3
7	High Pressure Cut-out Control	† 23-5536-9
8	Thermistor	23-5116-3
9	Manifold Strainer	83-1016-3
10	Water Inlet Female Wing Adapter	† 87-0609-3
11	Water Inlet Union (Compression Nut)	13-6096-1
12	Water Drain Female Wing Adapter	17-0602-1
13	Water Drain Copper Tube Insert	11048-1

Miscellaneous – Brackets, Screws, etc.

14	Dump Valve Mounting Bracket	600261-1
15	Dump Valve Shield (Used on Air-cooled Models Only)	† 70-0062-3
16	Base Angle	† 601424-1
17	Left Corner Post Weldment	600327-2
18	Right Corner Post Weldment	600327-1
19	Water Drain Vinyl Tubing, .625 ID	44-2084-3
20	Water Inlet Vinyl Tubing, .25 ID	44-2029-1
21	Compressor Mounting Rubber Grommet	† 85-0306-9
22	Compressor Mounting Sleeve (Inserts into Grommet)	† 85-0394-9
23	Compressor Mounting Nut	† 54-3002-9
24	Compressor Mounting Washer	† 55-7309-9
25	Clamp, Water Drain	† 56-5070-9
26	Clamp, Expansion Valve Bulb	† 56-5052-9
27	Clamp, Thermistor	56-5077-3
28	Locknut, Used to Fasten Refrigerant Service Valves (Not shown)	† 54-7503-9
29	Screw, #10-24 x .50	† 52-0206-9
30	Bushing .625 ID	† 25-0016-9
31	Bushing .875 ID	† 25-0140-9

† Refer to Cross Reference Guide

J0320 AIR-COOLED



1394

DESCRIPTION

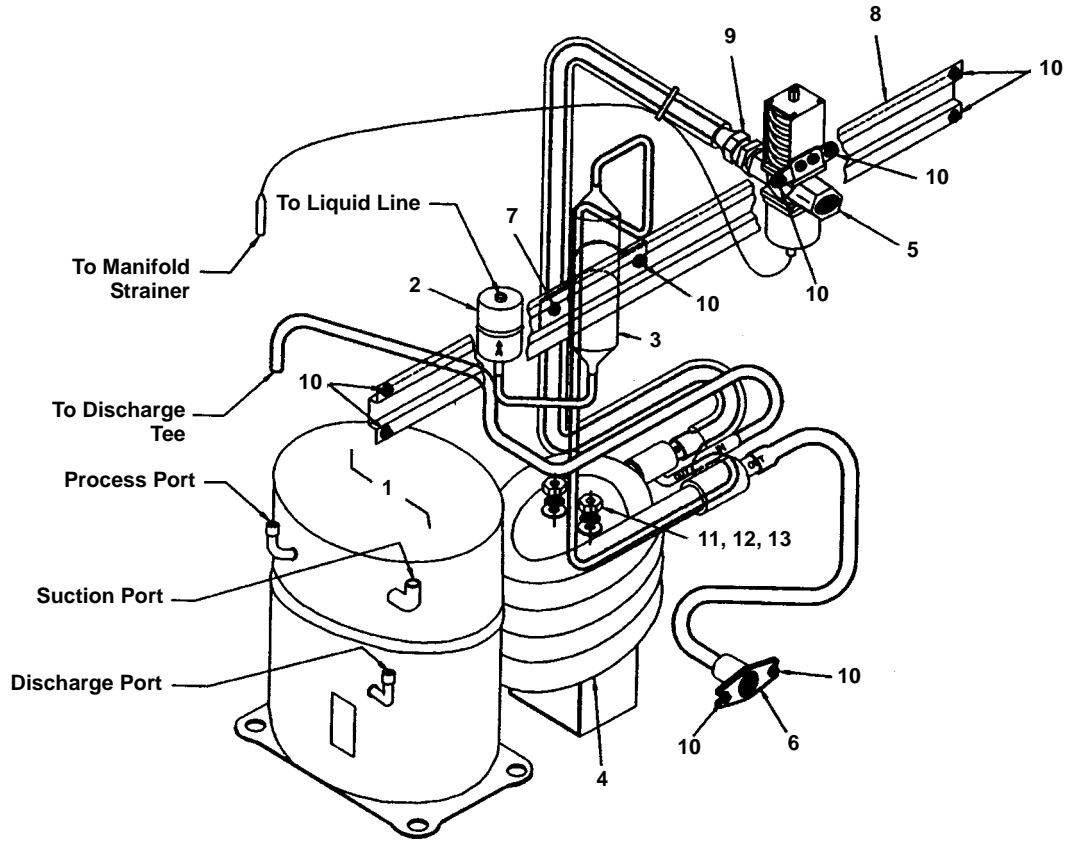
		PART NO.
1	Compressor (Refer to COMMON PARTS)	Page 4
2	Air Condenser	88-5085-3
3	Fan Motor	
	a. 115V	† 24-1281-3
	b. 208-230V/60 Hz or 230V/50 Hz	† 24-1282-3
4	Fan Blade	24-1622-3
5	Fan Cycling Control	† 20-0126-3
6	Air Filter (Not shown)	40-4006-3
7	Drier	† 89-3025-9

Miscellaneous – Brackets, Screws, etc.

8	Air Filter Bracket (Not shown)	† 76-2686-3
9	Fan Shroud	600324-1
10	Fan Motor Mounting Bracket	688781-4
11	Screw, #8-36 x .44	† 50-2559-9
12	Flat Washer	† 55-0426-9
13	Screw, #10-24 x .50	† 52-0206-9
14	Screw, #10-24 x .63	† 52-0205-9

† Refer to Cross Reference Guide

J0320 WATER-COOLED



1395

DESCRIPTION

1	Compressor (Refer to COMMON PARTS)
2	Drier
3	Receiver
4	Water-cooled Condenser
5	Water Regulating Valve
6	Water Drain Female Wing Adapter

PART NO.

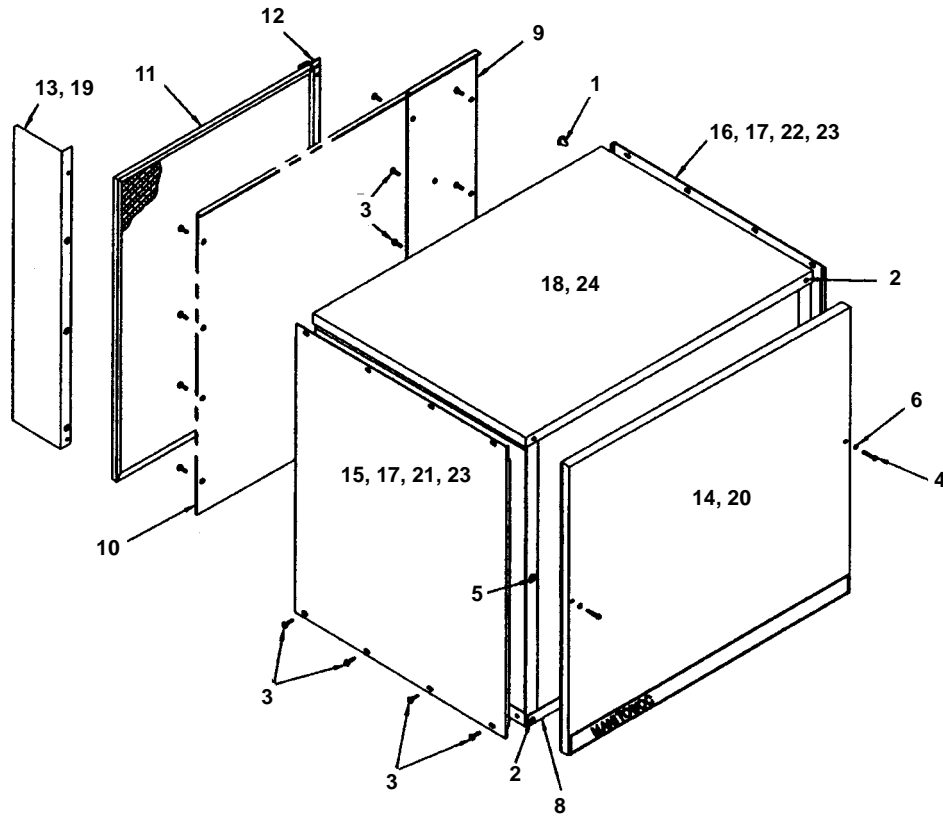
	Page 4
†	89-3025-9
	12-0003-1
†	88-6532-3
†	83-7206-9
	87-0612-3

Miscellaneous – Brackets, Screws, etc.

7	Receiver Strap
8	Bracket – Receiver/Valve Mounting
9	Water Coupling
10	Screw, #10-24 x .50
11	Flat Washer
12	Lockwasher
13	Nut

	600189-1
	600179-1
	83-3203-3
†	52-0206-9
†	55-7309-9
†	55-4514-9
†	54-3002-9

J0320 PANELS



1396

COMMON PARTS

	PART NO.
1 Canoe Clip Fastener	† 56-4820-9
2 Screw, #10-24 x .50 Flat	† 52-0209-9
3 Screw, #10-24 x .50 Hex.	† 52-0206-9
4 Screw, #8-32 x 1.25	† 50-2668-9
5 Threaded Insert	† 57-6865-9
6 "0" Ring	† 37-1819-9
7 Extruded Tape Gasket (Not shown)	† 92-0250-9
8 Front Support	† 000000164
9 Back Panel, Air	600328-1
10 Back Panel, Water	No Longer Available
11 Air Filter	40-4006-3
12 Filter Bracket.	† 76-2686-3

FAWN

13 Air Baffle	600220-1
14 Front Panel Assembly.	76-2521-3
15 LH Side Panel, Air	600394-1
16 RH Side Panel, Air	600396-1
17 Side Panel, Water	600398-1
18 Top Cover	600193-1

STAINLESS STEEL

19 Air Baffle	600220-3
20 Front Panel Assembly.	76-2522-3
21 LH Side Panel, Air	600394-3
22 RH Side Panel, Air	600396-3
23 Side Panel, Water	600398-3
24 Top Cover	600193-3

† Refer to Cross Reference Guide

INTENTIONALLY LEFT BLANK