



Ice Machine Parts List for Series J0600 Models

JR0600A

JD0692N

JR0601W

JY0604A

JR0690N

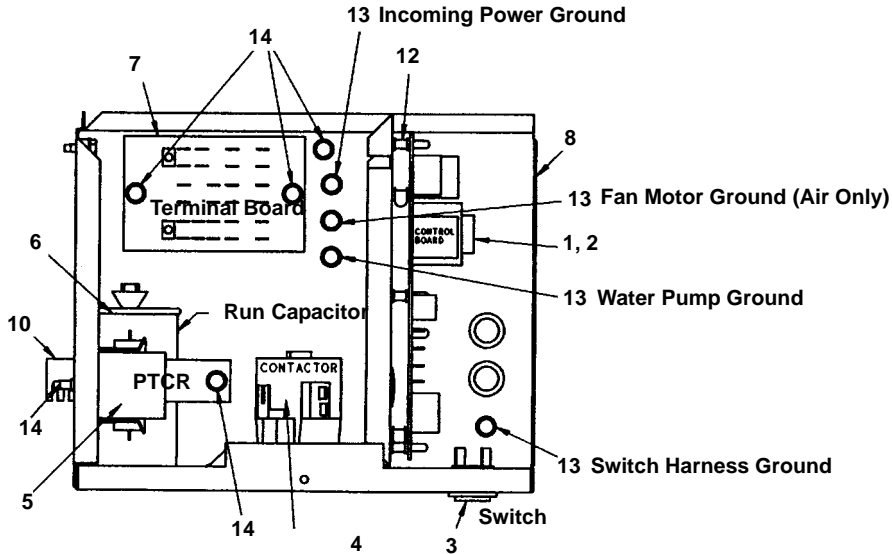
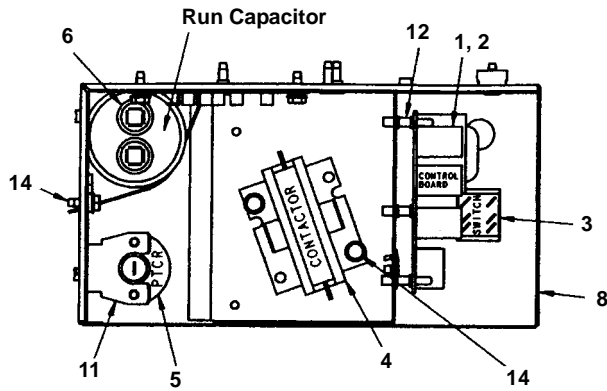
JY0605W

JD0602A

JY0694N

JD0603W

J0600 CONTROL BOX



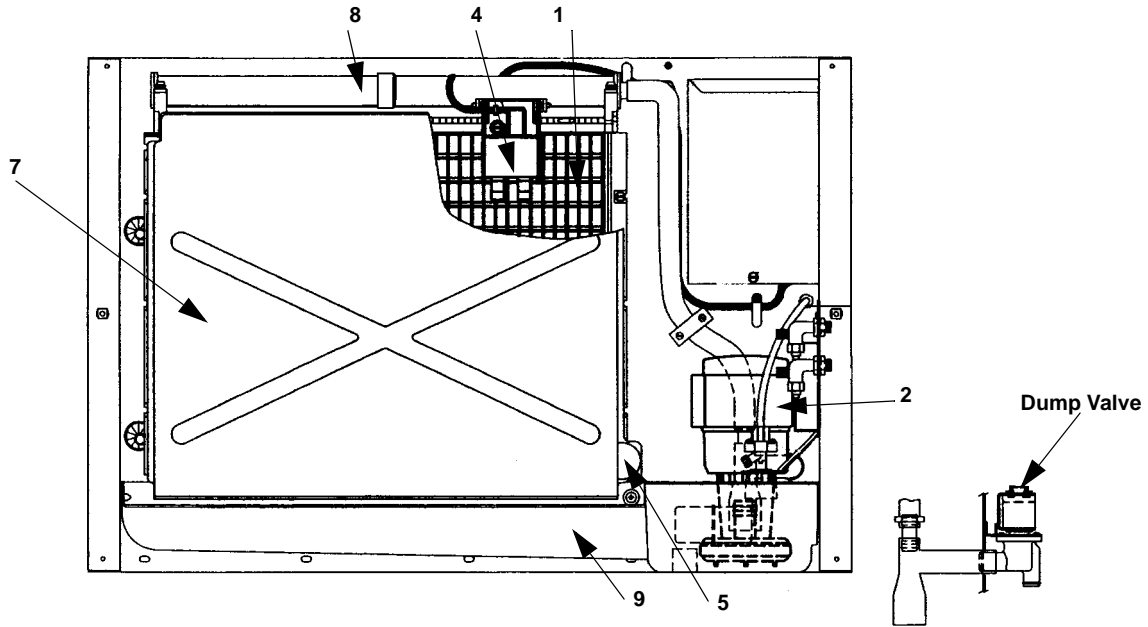
1421

DESCRIPTION

	PART NO.
1 Control Board (For use with all voltages)	† 76-2782-3
2 Fuses – Mounted On Control Board	
a. 7 Amp	25-1100-3
b. .125 Amp 60 Hz Mini Fuse	† 25-1116-9
c. .100 Amp 50 Hz Mini Fuse	25-1105-3
3 Toggle Switch Only	23-0134-3
a. Toggle Switch With Wiring Harness Attached	20-3217-3
4 Contactor 208-230V/60 Hz/1 Ph or 230V/50 Hz/1 Ph	† 20-0659-9
5 P.T.C.R. Compressor Starter	85-0499-3
6 Compressor Run Capacitor	
a. 60 Hz for R586C1E-PFV-258	20-1014-3
b. 60 Hz for R586C1E-PFV-251	85-0393-3
c. 60 Hz for C503KQE-PFV-255	85-0393-2
d. 50 Hz	85-0393-3
7 Terminal Board With Wire Harness Attached	
a. 60 Hz	20-3208-3
b. 50 Hz	20-3209-3
Miscellaneous – Brackets, Screws, etc.	
8 Control Box	602046-1
9 Control Box Cover (Not shown)	† 76-2507-3
10 Compressor Run Capacitor Mounting Bracket	602160-1
11 P.T.C.R. Compressor Starter Mounting Bracket	85-0501-3
12 Control Board Mounting Supports	43-0225-3
13 Screw, #10-24 x .50 Ground	† 52-0216-9
14 Screw, #10-24 x .50 Hex Head	† 52-0206-9

† Refer to Cross Reference Guide

J0600 EVAPORATOR COMPARTMENT



1422

DESCRIPTION

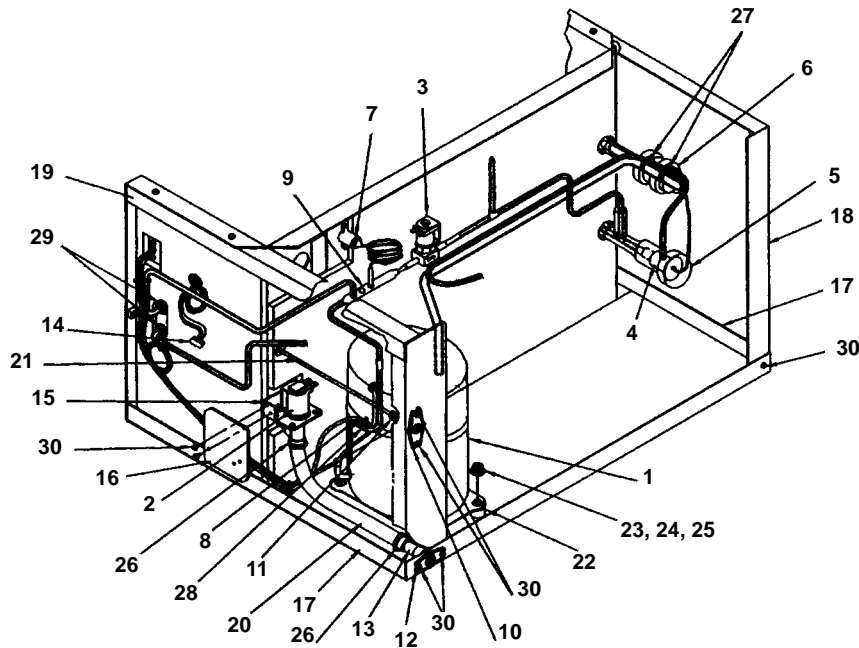
			PART NO.
1	Evaporator Assembly		
	a. Regular Cube	†	76-2515-9
	b. Dice Cube	†	76-2514-9
	c. Half Dice Cube	†	76-2513-9
	d. Gasket/Top Molding Assembly		76-2621-3
2	Water Pump 208-230V/60 Hz or 230V/50 Hz	†	76-2601-3
3	Float Valve (Complete Assembly)		83-6913-3
	a. Float Valve Screen	†	83-6906-9
	b. Float Valve Plunger	†	83-6908-9
	c. Float Valve Compression Nut	†	56-5072-9
4	Ice Thickness Control	†	76-2781-3
5	Magnetic Bin Switch (Mounted to Evaporator)	†	23-0148-3
6	Water Flow Clamp (Use on Regular Cube Evap. Only)		76-2054-3
7	Water Curtain	†	43-0464-3
	a. Water Curtain Hanger		76-2776-3
	b. Water Curtain Magnet And Clip	†	76-2802-3
8	Water Distribution Tube	†	76-2498-3
9	Water Trough	†	76-2748-3
10	High Pressure Cut-out (Refrigeration System)	†	23-5536-9
11	Refrigeration Service Valve Assembly	†	83-7310-9

Miscellaneous – Brackets, Screws, etc.

12	Float Valve Mounting Bracket	†	76-2140-3
13	Control Box Cover	†	76-2507-3
14	Nylon Spring Clip	†	56-5090-9
15	Tubing, Vinyl .25 OD (Water Inlet)		44-2029-1
16	Tubing, Vinyl .625 ID (Water Pump Out)		44-2083-3
17	Reducing Tee (Rubber)		43-0057-3
18	Union Connector (White Nylon)		83-9005-3
19	Water Trough Support Pin (Order Nylon Hex Nut Separately)	†	43-0201-9
20	Water Trough Support Pin Nylon Hex Nut	†	54-2945-9
21	Clip-in Receptacle (Female Side)		56-5085-3
22	Clip-in Receptacle Wing Nut (Male Side)		56-5086-3
23	Water Trough Support Clip	†	76-2704-3
24	Screw, #8-32 x .63 Nylon Water Distribution Tube Mounting	†	50-0001-3
25	Screw Used to Mount High Pressure Cut-out	†	51-2166-9
26	Screw, #10-24 x .50	†	52-0206-9
27	Screw, #10-24 x .750 Used to Mount Evaporator	†	52-0218-9

† Refer to Cross Reference Guide

J0600 COMMON PARTS



1423

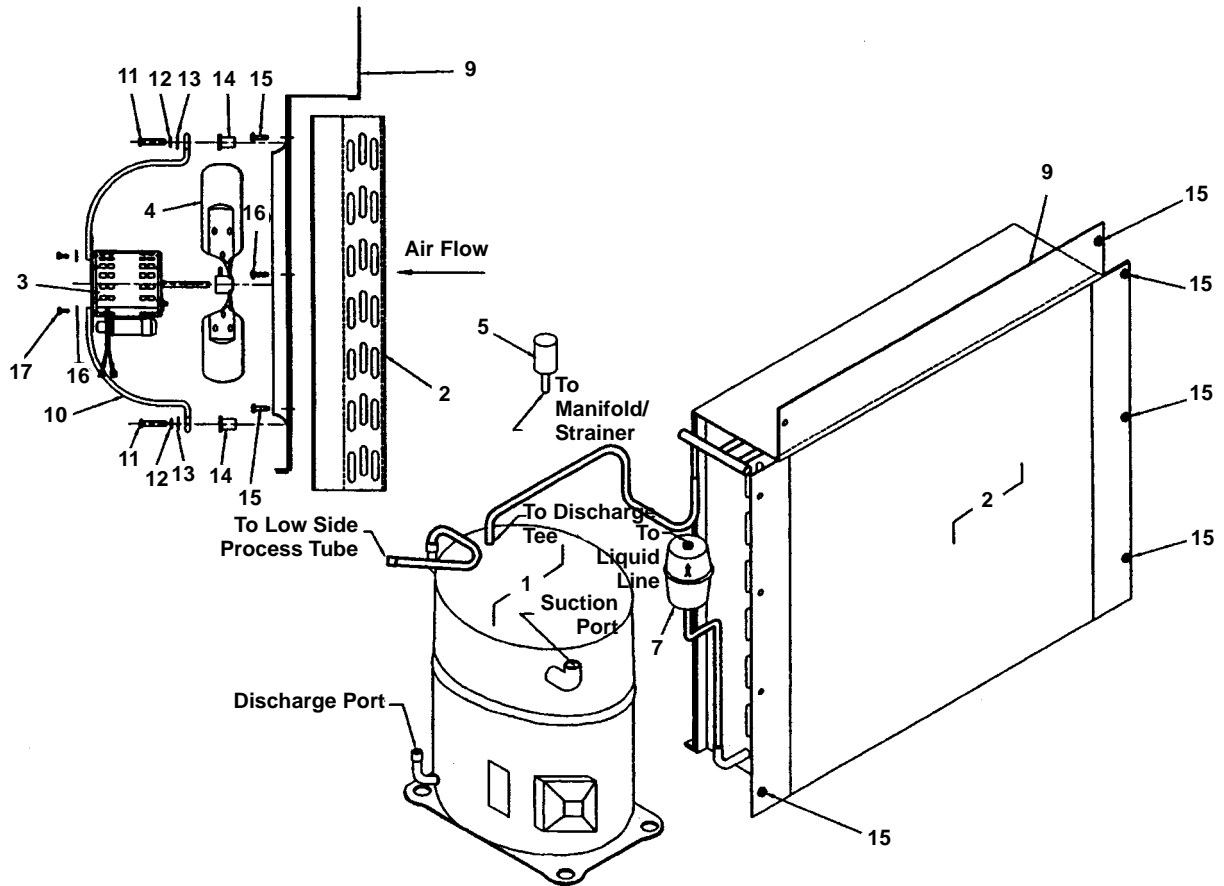
DESCRIPTION

PART NO.

1	Compressor	
	a. 208-230V/60 Hz/1 Ph	76-0094-3
	b. 230V/50 Hz/1 Ph	76-0093-3
2	Water Dump Valve	
	a. Dump Valve Rebuild Kit.	No Longer Available
	b. Dump Valve, 208/230V 50/60 Hz	000001768
3	Hot Gas Valve	
	a. Hot Gas Valve Including 208/230V 50/60 Hz Coil (Danfoss).	† 76-3010-1
	b. Hot Gas Valve 208/230V 50/60 Hz Coil Only	† 24-0448-3
4	Expansion Valve	† 76-0020-3
5	Expansion Valve Body Insulation Boot	
	a. Alco	40-0721-3
	b. Danfoss	40-0036-3
6	Expansion Valve Bulb Insulation Boot	40-0720-3
7	High Pressure Cut-out Control	† 23-5536-9
8	Thermistor.	23-5116-3
9	Manifold Strainer.	83-1015-3
10	Water Inlet Female Wing Adapter.	† 87-0609-3
11	Water Inlet Union (Compression Nut).	13-6096-1
12	Water Drain Female Wing Adapter.	17-0602-1
13	Water Drain Copper Tube Insert.	11048-1
14	Water Pump Electrical Wire Lead.	† 20-7810-3
Miscellaneous – Brackets, Screws, etc.		
15	Dump Valve Mounting Bracket	626031-4
16	Dump Valve Shield (Used on Air-cooled Models Only)	† 70-0062-3
17	Base Angle	† 601287-1
18	Left Corner Post Weldment.	600084-1
19	Right Corner Post Weldment	600084-2
20	Water Drain Vinyl Tubing, .625 ID.	† 44-2038-3
21	Water Inlet Vinyl Tubing, .25 ID	44-2029-1
22	Compressor Mounting Rubber Grommet	† 85-0306-9
23	Compressor Mounting Sleeve (Inserts into Grommet)	† 85-0394-9
24	Compressor Mounting Nut	† 54-3002-9
25	Compressor Mounting Washer	† 55-7309-9
26	Clamp, Water Drain	† 56-5070-9
27	Clamp, Expansion Valve Bulb.	† 56-5052-9
28	Clamp, Thermistor	56-5077-3
29	Locknut, Used to Fasten Refrigerant Service Valves	† 54-7503-9
30	Screw, #10-24 x .50	† 52-0206-9

† Refer to Cross Reference Guide

J0600 AIR-COOLED



1424

DESCRIPTION

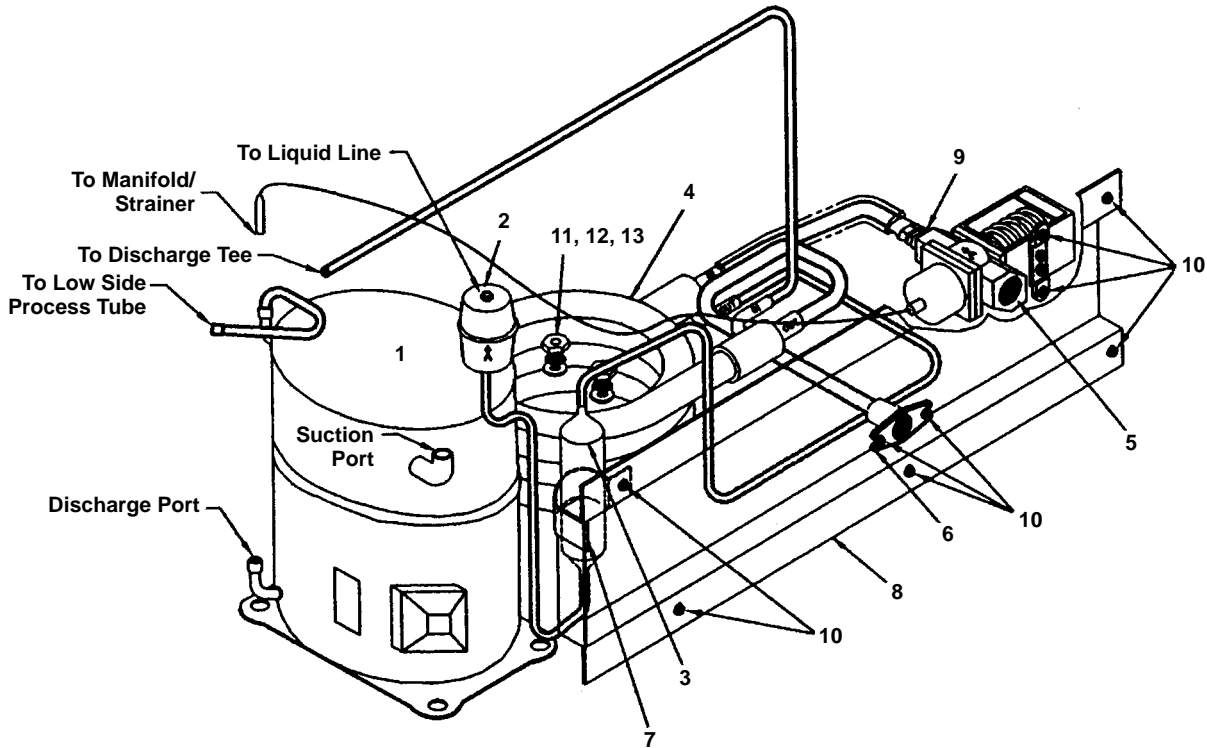
	PART NO.
1 Compressor (Refer to COMMON PARTS).....	Page 4
2 Air Condenser	88-5060-3
3 Fan Motor 208-230V/60 Hz or 230V/50 Hz	† 24-1293-9
4 Fan Blade.....	24-1617-3
5 Fan Cycling Control	† 20-0126-3
6 Air Filter (Not shown)	40-4003-3
7 Drier.....	† 89-3025-9

Miscellaneous – Brackets, Screws, etc.

8 Air Filter Bracket (Not shown)	† 76-2686-3
9 Fan Shroud	No Longer Available
10 Fan Motor Mounting Bracket	34-0662-3
11 Screw	† 50-3358-9
12 Lockwasher	† 55-4510-9
13 Flat Washer	† 55-7305-9
14 Rubber Well Nut.....	† 54-2955-9
15 Screw, #10-24 x .50	† 52-0206-9
16 Flat Washer	† 55-0426-9
17 Screw, 8-36 x 7/16"	† 50-2559-9

† Refer to Cross Reference Guide

J0600 WATER-COOLED



1425

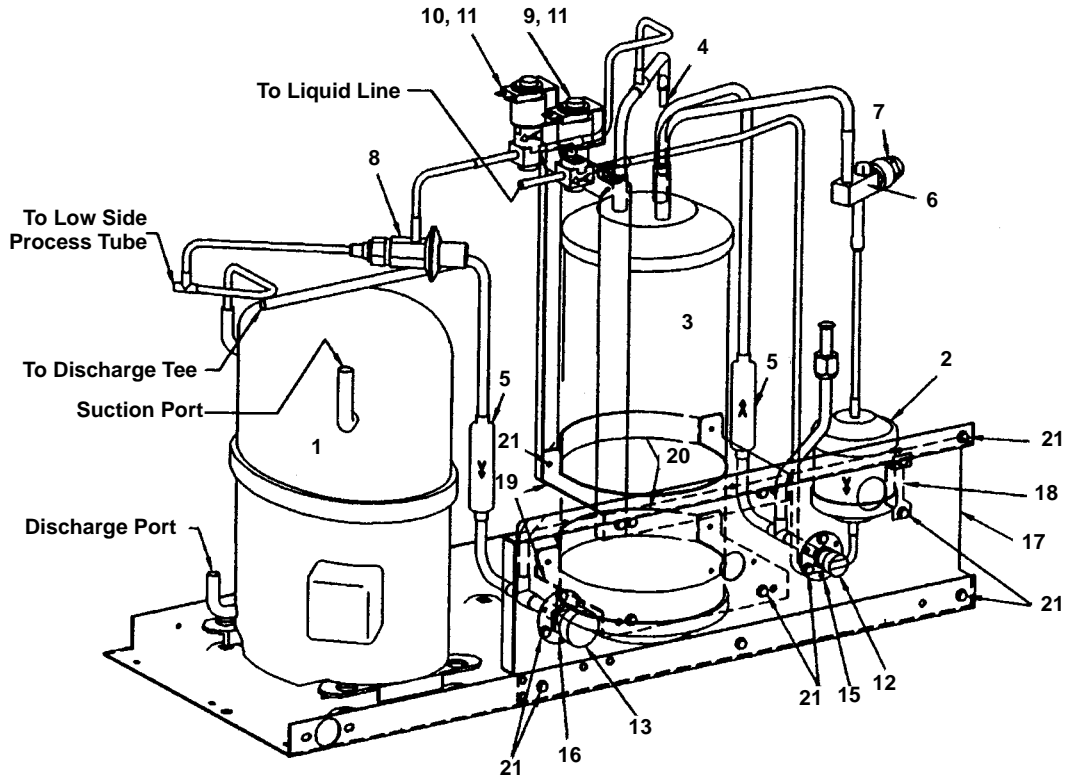
DESCRIPTION

DESCRIPTION	PART NO.
1 Compressor (Refer to COMMON PARTS)	Page 4
2 Drier	† 89-3025-9
3 Receiver	12-0003-1
4 Water-cooled Condenser	† 88-6533-3
5 Water Regulating Valve	† 83-7206-9
6 Water Drain Female Wing Adapter.	87-0612-3

Miscellaneous – Brackets, Screws, etc.

7 Receiver Strap	600054-1
8 Back Panel	600057-1
9 Water Coupling.	83-3203-3
10 Screw, #10-24 x .50	† 52-0206-9
11 Flat Washer.	† 55-7309-9
12 Lockwasher.	† 55-4514-9
13 Nut	† 54-3002-9

J0600 REMOTE



1426

DESCRIPTION

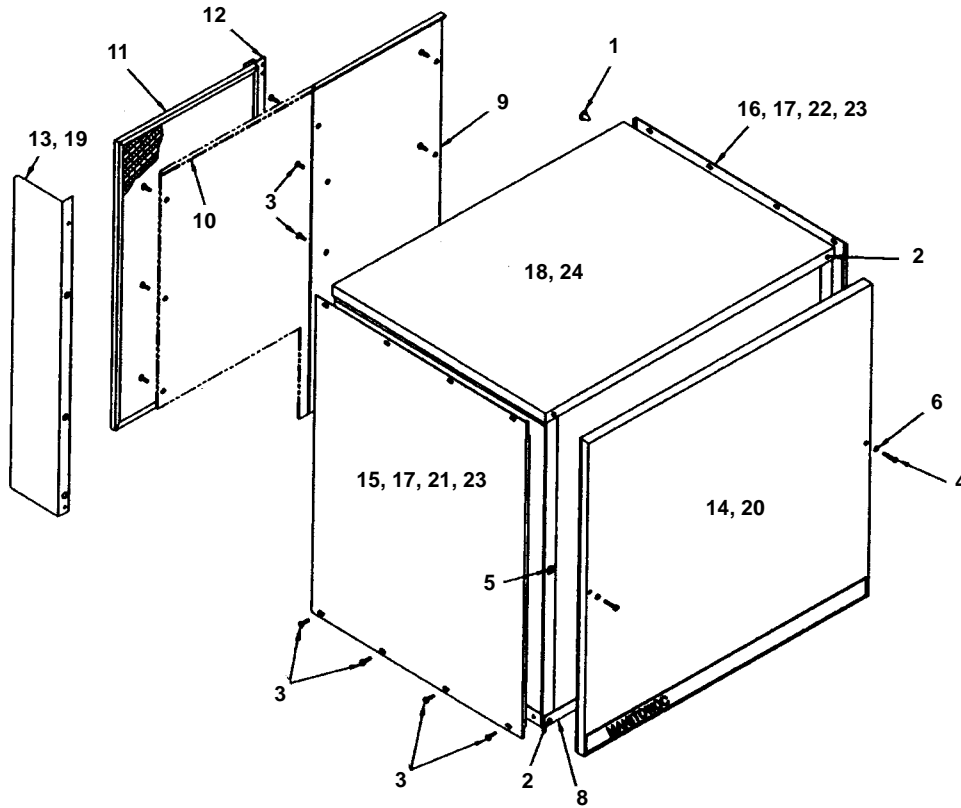
	PART NO.
1 Compressor (Refer to COMMON PARTS)	Page 4
2 Drier	† 89-3024-9
3 Receiver	† 76-2957-3
4 Safety Soft Plug	† 628451-9
5 Magni-Check Valve	† 83-7314-9
6 Liquid Line Service Valve	† 83-7316-9
7 Cap (For Liquid Line Service Valve)	56-5075-3
8 HPR Pressure Regulating Valve	† 83-6779-3
9 Liquid Line Solenoid Valve (LLS), Includes 208/230V 50/60 Hz Coil (Danfoss)	† 76-3008-1
10 HPR Solenoid Valve, Includes 208/230V 50/60 Hz Coil (Danfoss)	† 76-3006-1
11 Alco 230V Coil Only, for LLS and HPR Valves.	† 24-0448-3
12 Coupling – Male, 5/8-18	† 83-6034-3
13 Coupling – Male, 1-1/6-12	† 83-6035-3
14 Coupling Kit – Female (On Line Set – Not shown)	Sales K0129

Miscellaneous – Brackets, Screws, etc.

15 Coupling Mounting Flange (for 5/8-18)	83-6005-3
16 Coupling Mounting Flange (for 1-1/16-12)	83-6006-3
17 Back Panel	600057-1
18 Drier Support Bracket	601737-1
19 Receiver Mounting Bracket	600056-1
20 Receiver Mounting Strap	630721-4
21 Screw, #10-24 x .50	† 52-0206-9

† Refer to Cross Reference Guide

J0600 PANELS



1427

COMMON PARTS

	PART NO.
1 Canoe Clip Fastener	† 56-4820-9
2 Screw, #10-24 x .50 Flat	† 52-0209-9
3 Screw, #10-24 x .50 Hex.	† 52-0206-9
4 Screw, #8-32 x 1.50	† 50-2668-9
5 Cage Nut 8-12	† 54-2910-9
6 "0" Ring	† 37-1819-9
7 Extruded Tape (Not shown)	† 92-0250-9
8 Front Support	† 658041-9
9 Back Panel, Air	602086-1
10 Back Panel, Water or Remote	600045-1
11 Air Filter	40-4003-3
12 Filter Bracket.	† 76-2686-3

FAWN

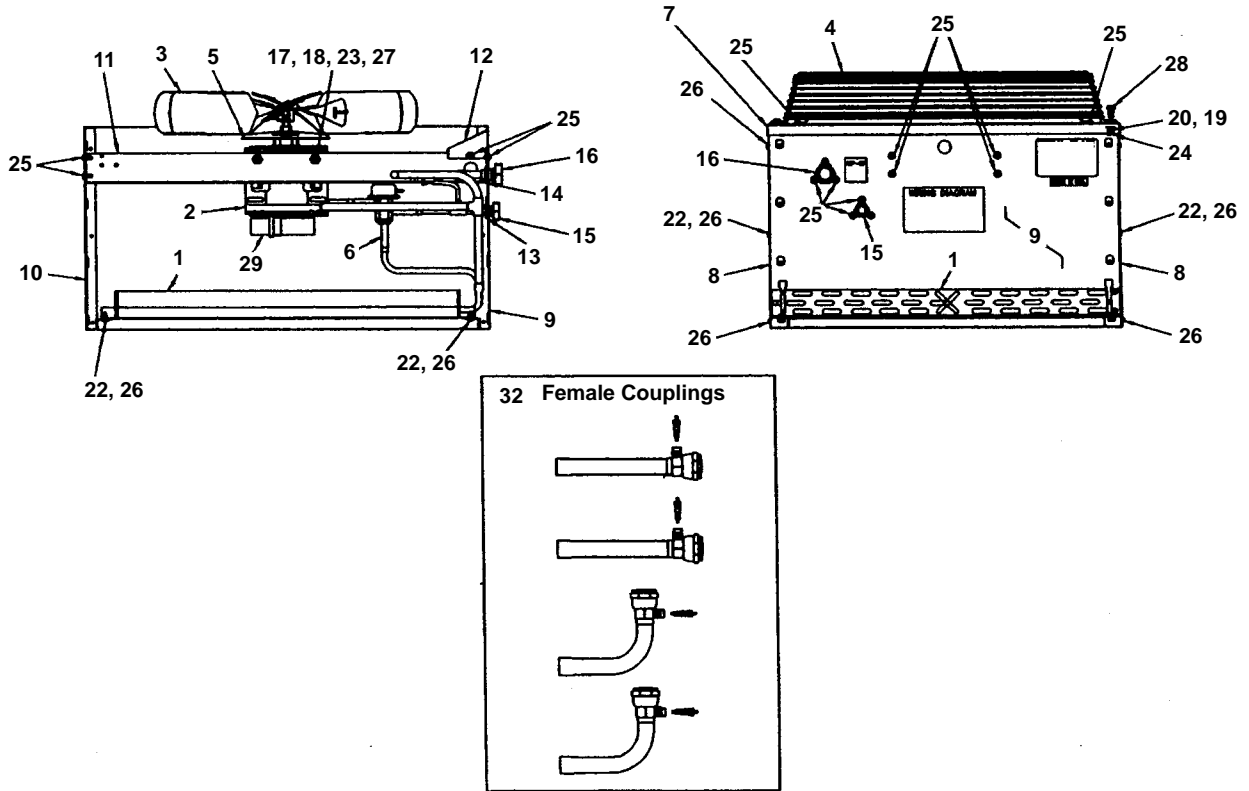
13 Air Baffle	600220-1
14 Front Panel Assembly.	† 76-2525-3
15 LH Side Panel, Air	602050-1
16 RH Side Panel, Air	602059-1
17 Side Panel, Water or Remote	600060-1
18 Top Cover	600068-1

STAINLESS STEEL

19 Air Baffle	600220-3
20 Front Panel Assembly.	† 76-2526-3
21 LH Side Panel, Air	602050-2
22 RH Side Panel, Air	602059-2
23 Side Panel, Water or Remote	600060-3
24 Top Cover	600068-3

† Refer to Cross Reference Guide

JC0895 REMOTE CONDENSER



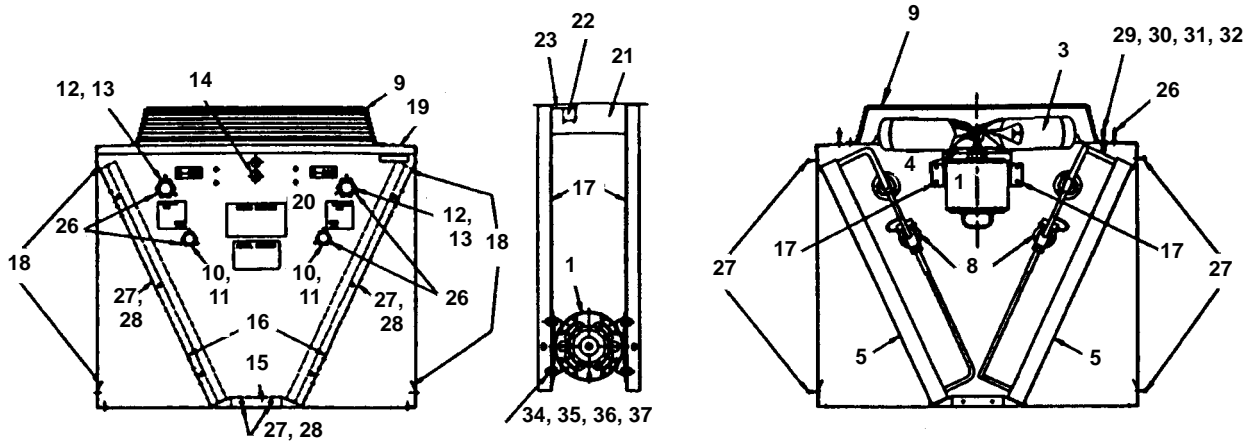
1428

COMMON PARTS

	PART NO.
1 Air Condenser	† 88-5062-9
2 Fan Motor, 208-230V/60 Hz or 230V/50 Hz	† 76-2941-3
3 Fan Blade	24-1611-3
4 Fan Guard	34-0064-3
5 Rain Slinger	24-1505-3
6 Head Pressure Control	83-6809-3
7 Top Cover	† 601775-1
8 Panel, Side	† 601774-1
9 Panel, Rear	† 601773-1
10 Panel, Front	† 601772-1
11 Base Bracket	† 601768-1
12 Electrical Cover	† 601776-1
13 Mounting Flange .25 x .38	83-6005-3
14 Mounting Flange .50 x .88	83-6006-3
15 Coupling, Male .63-18	† 83-6034-3
16 Coupling, Male 1.06-12	† 83-6035-3
17 Lockwasher .31 Split	† 55-7313-9
18 Washer – Flat .31 ID	† 55-7309-9
19 Washer – Flat .25 Stainless	† 55-7304-9
20 Lockwasher .25 Split Stainless	† 55-4511-9
21 Lockwasher #10 Int. Phos.	† 55-4464-9
22 Lockwasher #8 Int. Phos.	† 55-4459-9
23 Nut .31-18 Steel Hex	54-2975-9
24 Nut .25-20 Steel Hex	† 54-2952-9
25 Screw, #10-24 x .50	† 52-0206-9
26 Screw, #8 x .5	† 51-2153-9
27 Screw, .31-18 x .62	† 50-3565-9
28 Screw, .25-2 x .62	† 50-3345-9
29 Fan Capacitor (Emerson)	85-0458-3
29 Fan Capacitor (Magnatec)	No Longer Available
30 Terminal Block	20-0614-3
31 Terminal Block Mounting Bracket	600868-1
32 Female Coupling Kit	Sales K0129
33 Mounting Legs (Not shown)	† 601769-1

† Refer to Cross Reference Guide

DC0862 REMOTE CONDENSER



1429

COMMON PARTS

	PART NO.
1 Fan Motor, 115V/60 Hz	† 76-2942-3
2 Capacitor for Fan Motor	No Longer Available
3 Fan Blade	24-1611-3
4 Rain Slinger	24-1505-3
5 Air Condenser (Uses 2)	† 88-5062-9
6 Back Panel (Not shown)	† 601788-1
7 Legs (Not shown)	† 601769-1
8 Headmaster Control	83-6809-3
9 Fan Guard	34-0064-3
10 Male Coupling 5/8 - 18 THR	† 83-6034-3
11 Coupling Flange for 83-6034-3	83-6005-3
12 Male Coupling 1-1/16 - 12 THR	† 83-6035-3
13 Coupling Flange for 83-6035-3	83-6006-3
14 Hole Plug For 7/8" Hole	43-0146-3
15 Base	601779-1
16 Condenser Mounting Angle	601777-1
17 Fan Mounting Bracket Also Used As Base Bracket	† 601768-1
18 Support Bracket	† 601778-1
19 Top Cover	601789-1
20 Front Panel	† 601787-1
21 Electrical Box Cover	† 601776-1
22 Relay	24-0819-3
23 Relay Mounting Bracket	600000-1
24 Transformer (Not shown)	24-1027-3
25 Electrical Junction Box (Not shown)	25-1501-3
26 Screw, #10-24 x .62	† 52-0206-9
27 Screw, #8 x .50	† 51-2153-9
28 Lockwasher #8	† 55-4459-9
29 Screw, .25 x .62	† 50-3345-9
30 Lockwasher .25 split SS	† 55-4511-9
31 Washer, Flat .25 SS	† 55-7304-9
32 Nut .25-20 Steel Hex	† 54-2952-9
33 Lockwasher #10	† 55-4464-9
34 Screw, .31-18 x.62 Hex Head	† 50-3565-9
35 Nut .31-18 Steel Hex Head	54-2975-9
36 Washer, Flat .31 ID	† 55-7309-9
37 Lockwasher .31 Split Zinc	† 55-7313-9
38 Line Set Female Coupling 1-1/16 - 12, 90 Degree	† 83-6026-3
39 Line Set Female Coupling Straight 1-1/16 - 12	83-6027-3
40 Line Set Female Coupling 5/8 - 18, 90 Degree	83-6047-3
41 Line Set Female Coupling Straight 5/8 - 18	83-6048-3
42 Access Fitting Core for Couplings	76-2684-3

NOTE: Items 22, 23, 24 and 25 are used only when the optional K-00095 relay/transformer kit has been installed.

† Refer to Cross Reference Guide