



Ice Machine Parts List for Series Q200 Models

QR0200A

QD0203W

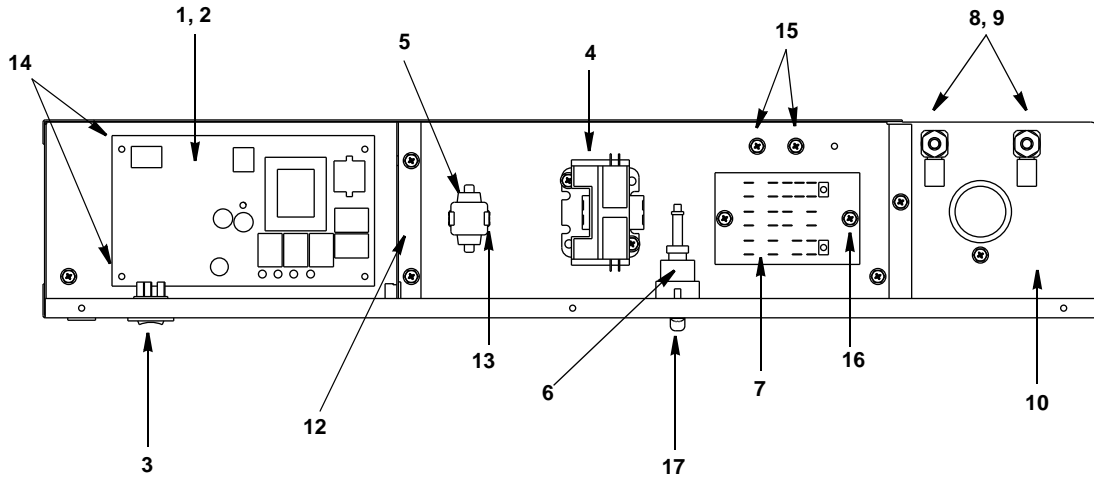
QR0201W

QY0204A

QD0202A

QY0205W

Q200 CONTROL BOX



pt1150

DESCRIPTION

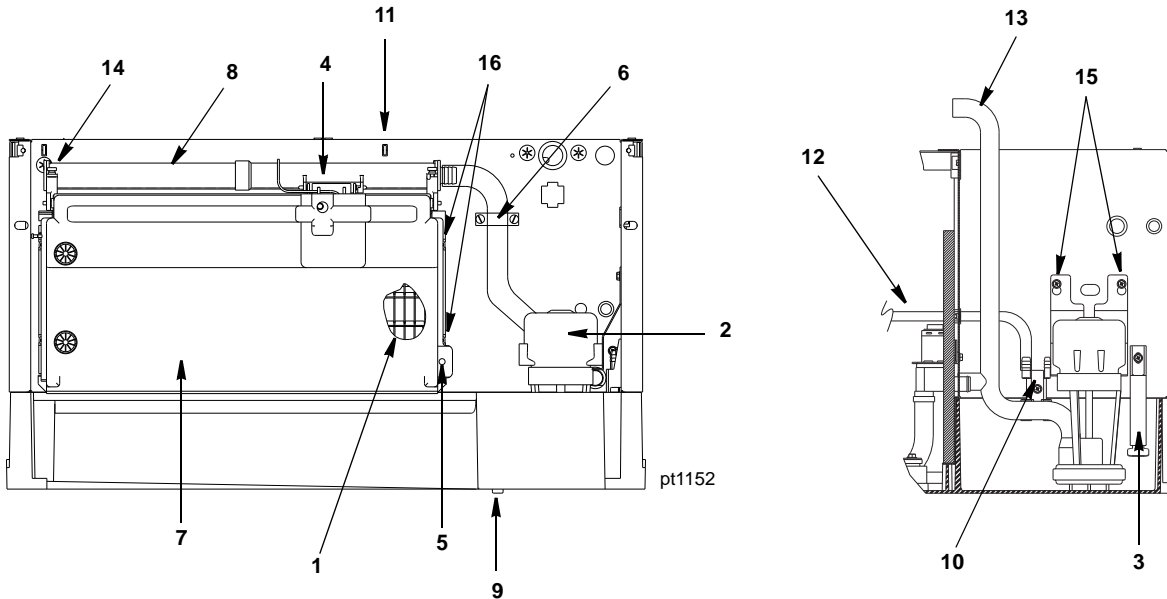
	PART NO.
1 Control Board (for use with all voltages)	† 76-2782-3
2 7 Amp Fuse – Mounted on Control Board	25-1100-3
3 Toggle Switch Only	23-0134-3
a. Toggle Switch with Wiring Harness Attached	20-3217-3
4 Contactor	
a. 115V/60 Hz/1 Ph.	† 20-0658-9
b. 208-230V/60 Hz/1 Ph or 230V/50 Hz/1 Ph	† 20-0657-9
5 P.T.C.R. Compressor Starter	85-0500-3
6 High Pressure Cut-out (Refrigeration System)	† 23-5536-9
7 Terminal Board with Wire Harness Attached	
a. 115V/60 Hz or 230V/60 Hz/1 Ph.	20-3244-3
b. 50 Hz/1 Ph	20-3245-3
8 Refrigeration Service Valve Assembly	83-7324-3

Miscellaneous – Brackets, Screws, etc.

9 Locknut Used to Mount Refrigeration Service Valves	† 54-7503-9
10 Control Box	602442-1
11 Control Box Cover (Not shown)	76-2805-3
12 Control Box Partition	602436-1
13 P.T.C.R. Compressor Starter Mounting Bracket	85-0502-3
14 Control Board Mounting Supports	43-0225-3
15 Screw, #10-24 x .50 Ground.	† 52-0216-9
16 Screw, #10-24 x .50 Hex Head.	† 52-0206-9
17 Screw Used to Mount High Pressure Cut-out	† 51-2166-9

† Refer to Cross Reference Guide

Q200 EVAPORATOR COMPARTMENT

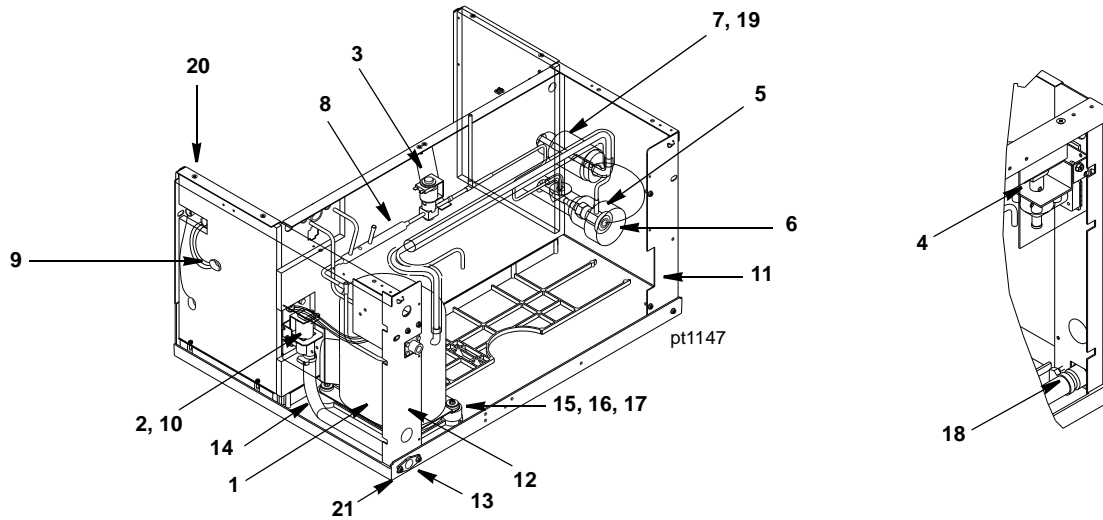


DESCRIPTION

	PART NO.
1 Evaporator Assembly	
a. Regular Cube	† 76-2585-9
b. Dice Cube	† 76-2584-9
c. Half Dice Cube	† 76-2658-9
2 Water Pump	
a. 115V/60 Hz	† 76-2306-3
b. 208-230V/60 Hz or 230V/50 Hz	† 76-2601-3
3 Water Level Probe	25-1129-3
4 Ice Thickness Control Probe	† 76-2781-3
5 Magnetic Bin Switch (Mounted to Evaporator)	† 23-0148-3
6 Water Flow Clamp (Use on Regular Cube Evap. Only)	76-2054-3
7 Water Curtain	40-0478-3
a. Water Curtain Magnet and Clip	† 76-2802-3
b. Water Curtain Hanger	76-2776-3
8 Water Distribution Tube	† 76-2498-3
9 Water Trough Drain Plug	† 43-0062-9
10 Water Inlet Flow Tube	43-0388-3
Miscellaneous – Brackets, Screws, etc.	
11 Nylon Spring Clip	† 56-5090-9
12 Water Inlet Tubing .375 ID	44-2123-3
13 Tubing (Water Pump Out)	44-2113-3
14 Screw, #8-32 x .63 Nylon Water Distribution Tube Mounting	† 50-0001-3
15 Screw, #10-24 x .50	† 52-0206-9
16 Screw, #10-24 x .750 Used to Mount Evaporator	† 52-0218-9
17 Base and Water Trough Repair Kit	† 76-2806-3
18 Evaporator Top Molding and Gasket Assembly	76-2621-3

† Refer to Cross Reference Guide

Q200 REFRIGERATION COMPARTMENT – COMMON PARTS



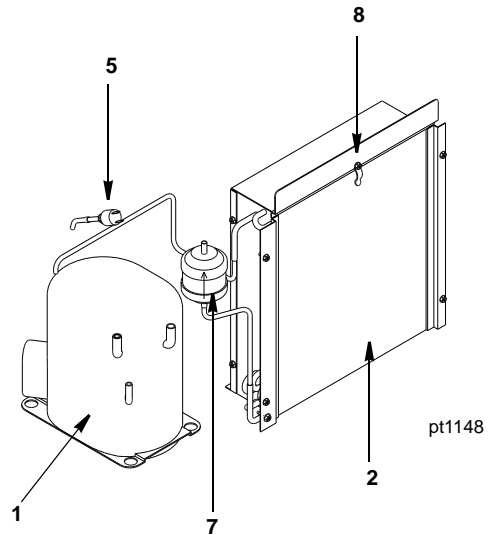
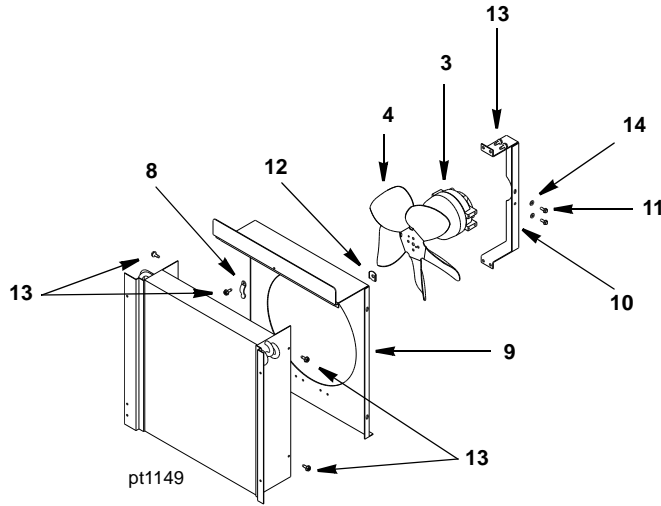
pt1146

DESCRIPTION

		PART NO.
1 Compressor		
a. 115V/60 Hz/1 Ph.....		† 76-2752-3
b. Overload for Compressor 76-2752-3		85-0541-3
c. 208/230V/60 Hz/1 Ph		† 76-2754-3
d. Overload for Compressor 76-2754-3		85-0542-3
e. 230V/50 Hz/1 Ph		† 76-2753-3
2 Water Dump Valve		
a. Dump Valve, 115V		000001767
b. Dump Valve, 208/230V 50/60 Hz		000001768
c. Dump Valve Rebuild Kit		No Longer Available
3 Hot Gas Valve		
a. Hot Gas Valve Including 115V 60 Hz Electrical Coil (Danfoss)		† 76-3001-1
b. Hot Gas Valve 115V Coil only Danfoss.....		000002048
c. Hot Gas Valve 115V Coil only Alco.....		24-0436-3
d. Hot Gas Valve Including 208/230V 50/60 Hz Electrical Coil (Danfoss)		† 76-3007-1
e. Hot Gas Valve 208/230V 50/60 Hz Coil Only Danfoss.....		000002049
f. Hot Gas Valve 208/230V 50/60 Hz Coil Only Alco		† 24-0448-3
4 Water Inlet Valve		
a. Water Inlet Valve Including 115V Coil.....		76-0112-3
b. Water Inlet Valve Including 208/230V 50/60 Hz Coil		76-0113-3
c. Water Inlet Valve Rebuild Kit		24-0538-3
5 Expansion Valve		† 76-2583-3
6 Expansion Valve Body Insulation Boot		40-0721-3
7 Expansion Valve Bulb Insulation Boot		40-0720-3
8 Manifold Strainer (in front of hot gas valve)		83-1016-3
9 Water Pump Electrical Wire Lead		† 20-7810-3
Miscellaneous – Brackets, Screws, etc.		
10 Dump Valve Mounting Bracket		602354-1
11 Left Corner Post Weldment		602177-1
12 Right Corner Post Weldment		602176-1
13 Water Drain Female Wing Adapter		87-0608-3
14 Water Drain Vinyl Tubing, .625 ID		† 44-2038-3
15 Compressor Mounting Rubber Grommet		† 85-0306-9
16 Compressor Mounting Washer		† 55-7341-9
17 Compressor Mounting Screw		† 50-1230-9
18 Clamp, Water Drain		† 56-5070-9
19 Clamp, Expansion Valve Bulb		† 56-5052-9
20 Screw, #10-24 x .50		† 52-0206-9
21 Screw, #10-24 x .75		52-0218-3

† Refer to Cross Reference Guide

Q200 REFRIGERATION COMPARTMENT – AIR-COOLED



DESCRIPTION

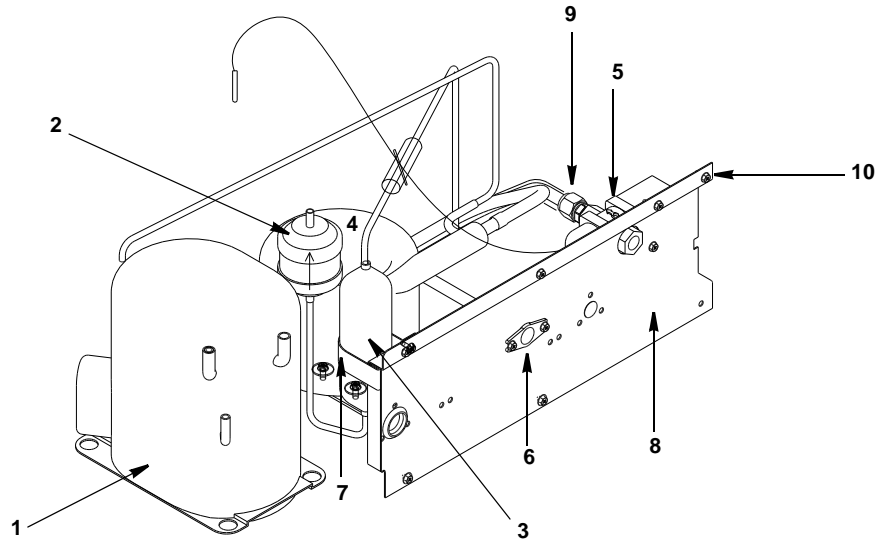
	PART NO.
1 Compressor (Refer to COMMON PARTS Page)	Page 4
2 Air Condenser	88-5130-3
3 Fan Motor	
a. 115V	† 24-1287-3
b. 208-230V/60 Hz or 230V/50 Hz	† 24-1288-3
4 Fan Blade	24-1624-3
5 Fan Cycling Control	† 20-0126-3
6 Air Filter (Not shown)	40-4019-3
7 Drier	† 89-3025-9

Miscellaneous – Brackets, Screws, etc.

8 Air Filter Clip	† 56-5069-9
9 Fan Shroud	6021821
10 Fan Motor Mounting Bracket	6008101
11 Screw, 8-36 x 7/16	† 50-2559-9
12 Seed Nut to Mount Fan Blade	† 54-7507-9
13 Screw, #10-24 x .50	† 52-0206-9
14 Flat Washer	† 55-0426-9

† Refer to Cross Reference Guide

Q200 REFRIGERATION COMPARTMENT – WATER-COOLED



pt1145

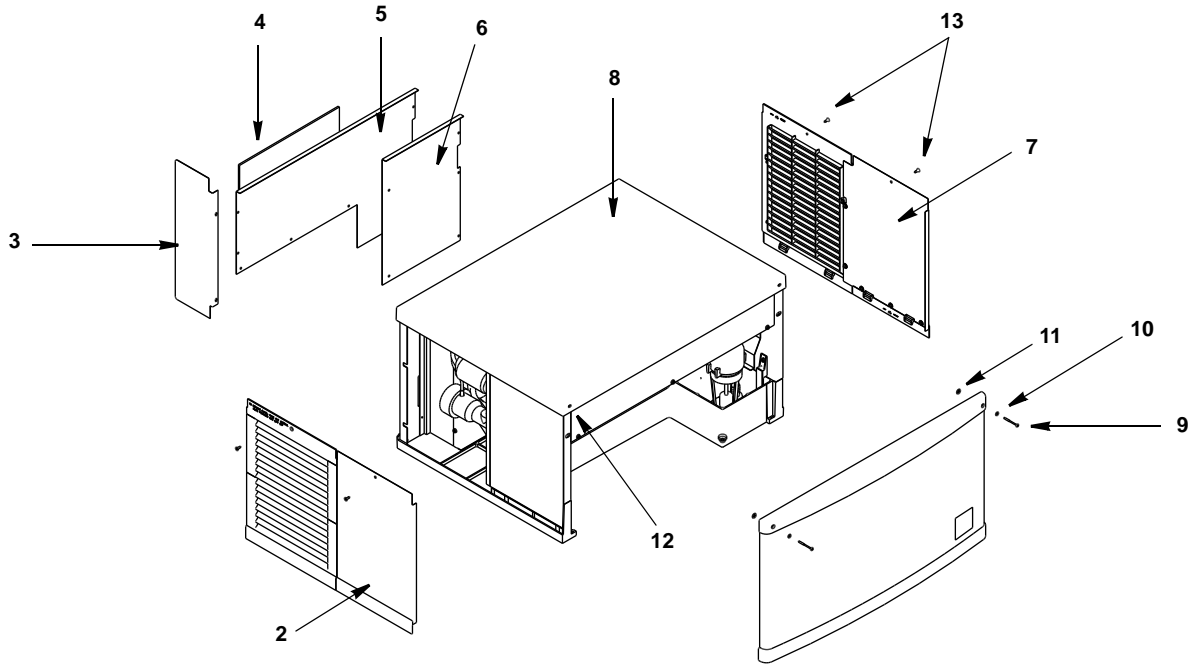
DESCRIPTION

DESCRIPTION	PART NO.
1 Compressor (Refer to COMMON PARTS Page)	Page 4
2 Drier	† 89-3025-9
3 Receiver	12-0003-1
4 Water-cooled Condenser	† 88-6531-3
5 Water Regulating Valve	† 83-7206-9
6 Water Drain Female Wing Adapter.	87-0608-3

Miscellaneous – Brackets, Screws, etc.

7 Receiver Strap	600054-1
8 Back Panel	601906-1
9 Water Coupling.	83-3202-3
10 Screw, #10-24 x .50	† 52-0206-9

Q200 PANELS



pt1145

DESCRIPTION

	PART NO.
1 Front Panel Assembly	76-2807-3
2 Left Side Panel	† 76-2808-3
3 Air Baffle	602374-1
4 Air Filter	40-4019-3
5 Back Panel, Water	602434-1
6 Back Panel, Air	602433-1
7 Right Side Panel	† 76-2809-3
8 Top Cover	43-0331-3

Miscellaneous – Brackets, Screws, etc.

9 Front Cover Screw	† 51-1901-9
10 Front Cover Washer	† 55-7338-9
11 Front Cover Screw Retainer	† 56-4827-9
12 Speed Nut Assembly to Mount Front Cover	54-7303-3
13 Screw, #10-24 x .50 Flat	† 52-0209-9
14 Extruded Tape (Not shown)	† 92-0250-9

NOTE: Items 9, 10, 11 and 12 can be ordered as assembly 76-2898-3.

INTENTIONALLY LEFT BLANK