



**Ice Machine Parts List for
Series Q800C Models**

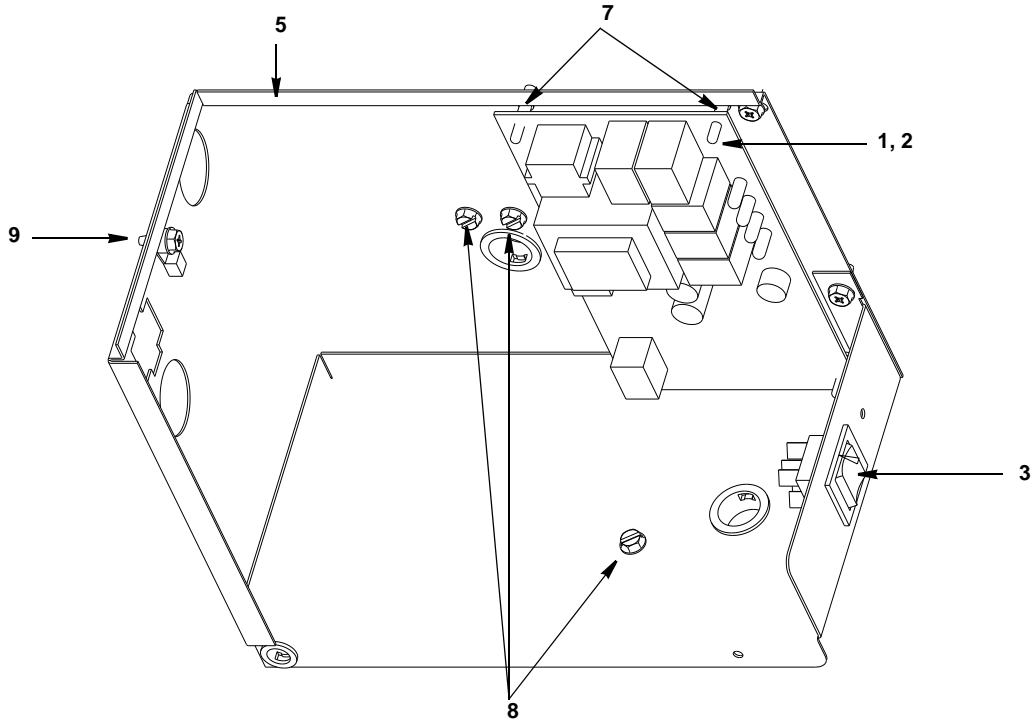
QR870C

QY874C

QD872C

CVD875

Q800C CONTROL BOX



pt1298

DESCRIPTION

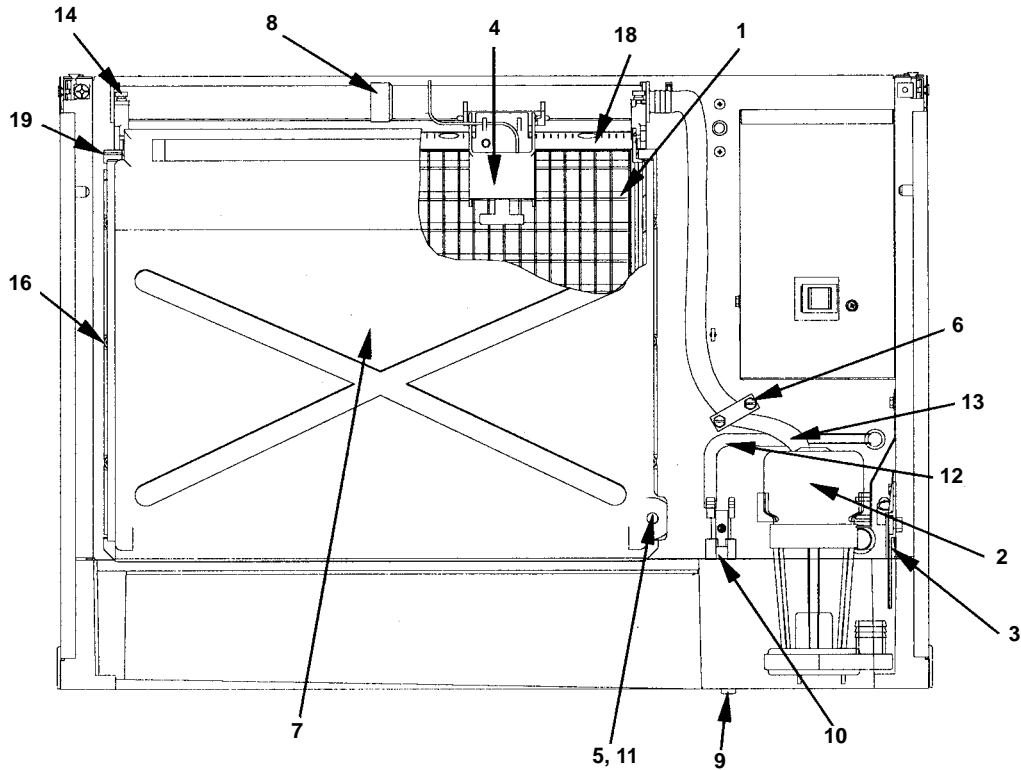
DESCRIPTION	PART NO.
1 Control Board (for use with all voltages)	† 76-2782-3
2 7 Amp Fuse – Mounted on Control Board	25-1100-3
3 Toggle Switch Only	23-0134-3
a. Toggle Switch with Wiring Harness Attached	20-3217-3
4 Wiring Harness (Not shown)	
a. 115V/60 Hz/1 Ph	20-3306-3
b. 230V/50 Hz/1 Ph	20-3319-3

Miscellaneous – Screws, Supports, etc.

5 Control Box	602559-1
6 Control Box Cover (Not shown)	† 76-2852-3
7 Control Board Mounting Supports	43-0225-3
8 Screw, #10-24 x .50 Ground	† 52-0216-9
9 Screw, #10-24 x .50	† 52-0206-9

† Refer to Cross Reference Guide

Q800C EVAPORATOR COMPARTMENT



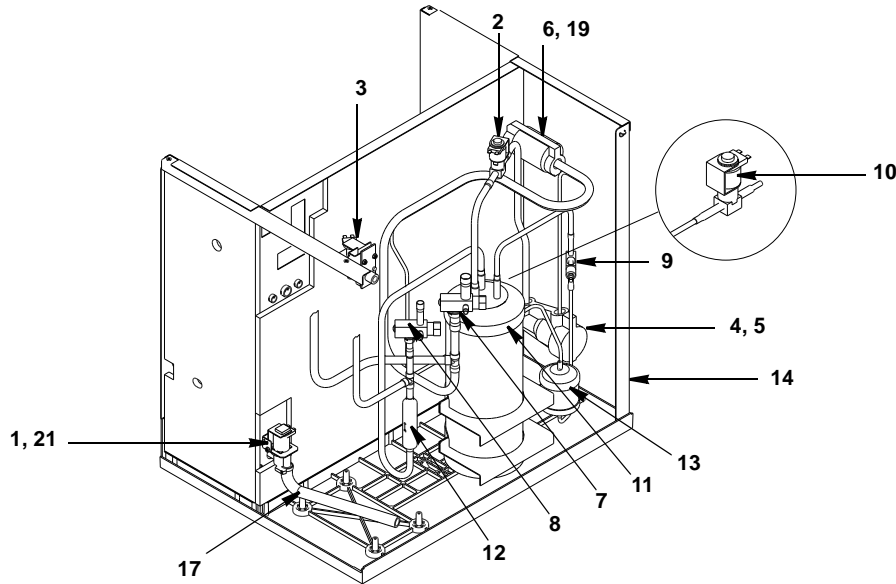
pt1605

DESCRIPTION

		PART NO.
1	Evaporator Assembly	
	a. Regular Cube	† 76-2473-9
	b. Dice Cube	† 76-2472-9
	c. Half Dice Cube	† 76-2471-9
2	Water Pump	
	a. 115V/60 Hz	† 76-2552-3
	b. 208-230V/50 Hz	† 14-8027-9
3	Water Level Probe	25-1129-3
4	Ice Thickness Control Probe	† 76-2781-3
5	Magnetic Bin Switch (Mounted to Evaporator)	† 23-0148-3
6	Water Flow Clamp (Used on Regular Cube Evaporator Only)	76-2054-3
7	Water Curtain	40-0851-3
8	Water Distribution Tube	† 76-2498-3
9	Water Trough Drain Plug	† 43-0062-9
10	Water Inlet Flow Tube	43-0388-3
Miscellaneous – Brackets, Screws, etc.		
11	Water Curtain Magnet with Attachment Clip	† 76-2802-3
12	Water Inlet Tubing .375 ID	44-2124-3
13	Tubing (Water Pump Out)	44-2114-3
14	Screw, #8-32 x .63 Nylon Water Distribution Tube Mounting	† 50-0001-3
15	Screw, #10-24 x .50 (Water Pump Mounting – Not shown)	† 52-0206-9
16	Screw, #10-24 x .750 Used to Mount Evaporator	† 52-0218-9
17	Base and Water Trough Repair Kit (Not shown)	† 76-2806-3
18	Evaporator Top Molding and Gasket Assembly	76-2621-3
19	Water Curtain Pin Assembly	76-2776-3

† Refer to Cross Reference Guide

Q800C REFRIGERATION COMPARTMENT



sv1754

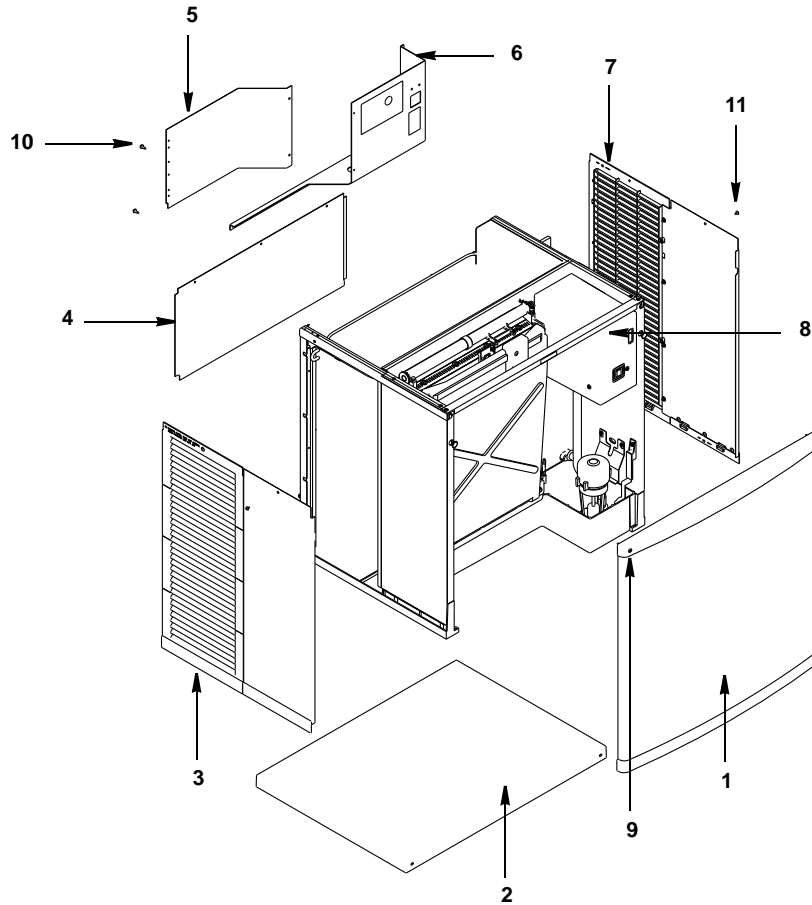
DESCRIPTION

PART NO.

1	Water Dump Valve	
a.	115V/60 Hz	000001767
b.	208/230V 50/60 Hz	000001768
c.	Dump Valve Rebuild Kit	No Longer Available
2	Cool Vapor Valve	
a.	Solenoid Valve Including 115V/60 Hz Electrical Coil (Danfoss)	† 76-3005-1
b.	115V/60 Hz Electrical Coil Only Danfoss	000002048
c.	115V/60 Hz Electrical Coil Only Alco	24-0436-3
d.	Solenoid Valve Including 208/230V 50/60 Hz Electrical Coil (Danfoss)	† 76-3011-1
e.	208/230V 50/60 Hz Electrical Coil Only Danfoss	000002049
f.	208/230V 50/60 Hz Electrical Coil Only Alco	† 24-0448-3
3	Water Inlet Valve	
a.	Water Inlet Valve Including 115V/60 Hz Coil	76-0112-3
b.	Water Inlet Valve Including 208/230V 50/60 Hz Electrical Coil	76-0113-3
4	Expansion Valve	† 76-0022-3
5	Expansion Valve Body Insulation Boot	
a.	Alco	40-0721-3
b.	Danfoss	40-0036-3
6	Expansion Valve Bulb Insulation Boot	40-0720-3
7	Manual Shut-off Valve Suction Line	83-7330-3
a.	Valve Cap	83-7302-3
b.	Insulation Boot	40-0740-3
8	Manual Shut-off Valve Liquid Line	83-7329-3
a.	Valve Cap	83-7302-3
9	Receiver Service Valve	† 83-7316-9
a.	Valve Cap	56-5075-3
10	Liquid Line Solenoid Valve	
a.	Liquid Line Solenoid Valve Including 115V/60 Hz Coil (Danfoss)	† 76-3001-1
b.	115V/60 Hz Coil Only Danfoss	000002048
c.	115V/60 Hz Coil Only Alco	24-0436-3
d.	Liquid Line Solenoid Valve Including 208/230V 50/60 Hz Electrical Coil (Danfoss)	† 76-3007-1
e.	208/230V 50/60 Hz Coil Only Danfoss	000002049
f.	208/230V 50/60 Hz Coil Only Alco	† 24-0448-3
11	Receiver	† 76-2959-3
12	Check Valve	† 83-7314-9
13	Drier	† 89-3027-9
Miscellaneous – Brackets, Screws, etc.		
14	Left Corner Post	601954-1
15	Right Corner Post (Not shown)	601953-1
16	Water Drain Female Wing Adapter (Not shown)	87-0608-3
17	Water Drain Vinyl Tubing, .625 ID	† 44-2038-3
18	Clamp, Water Drain (Not shown)	† 56-5070-9
19	Clamp, Expansion Valve Bulb	† 56-5052-9
20	Screw, #10-24 x .75 (Used on Female Wing Adapter – Not shown)	† 50-1225-9
21	Dump Valve Shield	† 70-0062-3

† Refer to Cross Reference Guide

Q800C HEAD SECTION PANELS



pt1297

DESCRIPTION

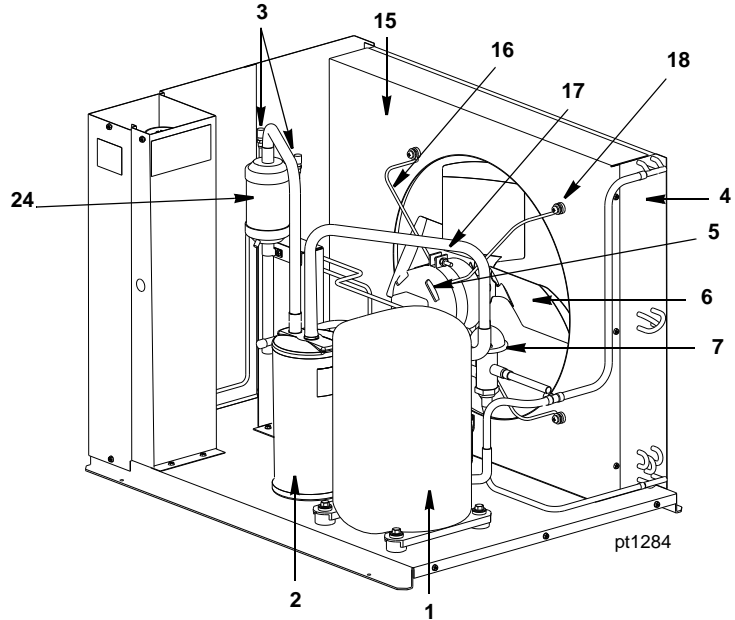
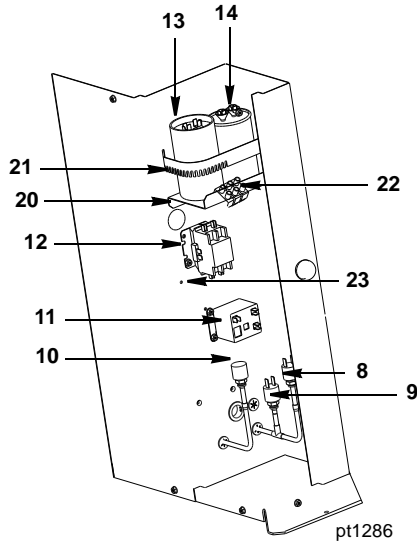
	PART NO.
1 Front Cover	76-2857-3
2 Cover Top	43-0331-3
3 Left Side Panel	† 76-2833-3
4 Back Panel	603776-1
5 Service Valve Back Panel	603997-1
6 Service Valve Panel	603995-1
7 Right Side Panel	† 76-2834-3
8 Control Box Cover	† 76-2852-3

Miscellaneous – Brackets, Screws, etc.

9 Front Panel Screw	† 51-1901-9
a. Washer	† 55-7338-9
b. Front Cover Screw Retainer (O-Ring)	† 56-4827-9
c. Speed Nut Assembly to Mount Front Cover	† 54-7303-9
10 Screw, #10-24 x .50 Hex (Mounts Rear Panels)	† 52-0206-9
11 Screw, #10-24 x .375 Phillips (Mounts Side Panels)	† 50-2350-9

† Refer to Cross Reference Guide

CVD875 CONDENSING UNIT

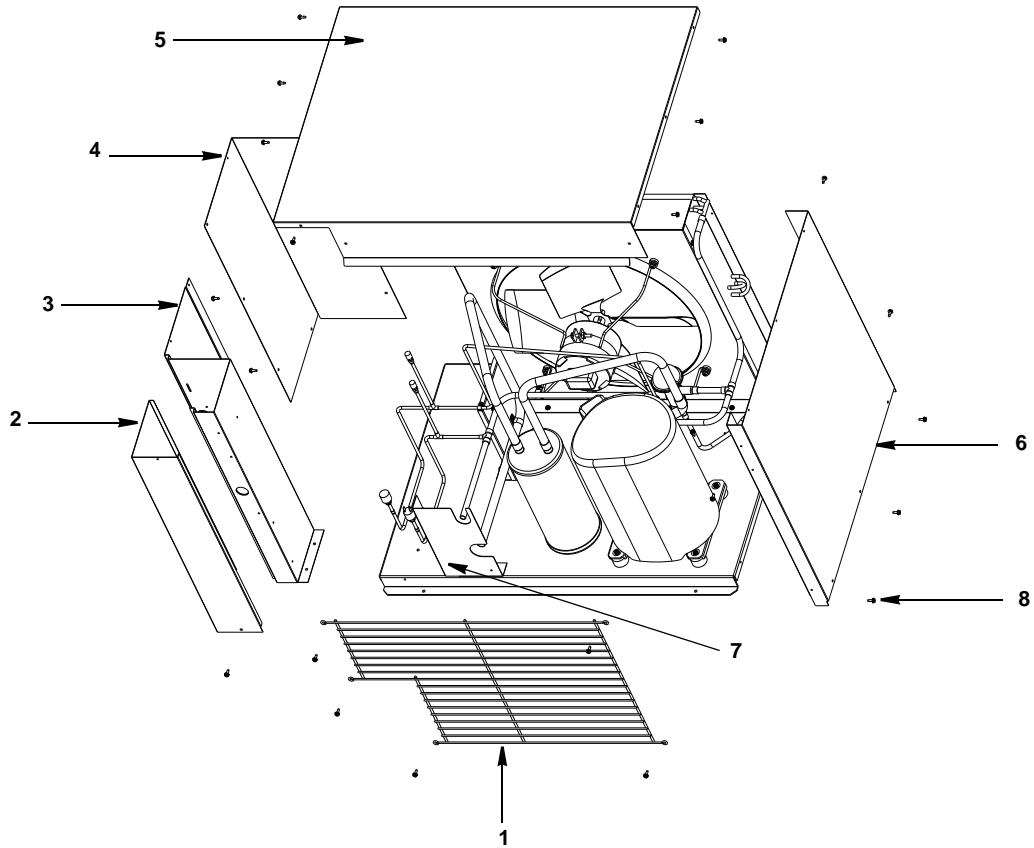


DESCRIPTION

		PART NO.
1	Compressor	
	a. 208-230V/60 Hz/1 Ph	† 76-0008-3
	b. 208-230V/60 Hz/3 Ph	† 76-0009-3
	c. 208-230V/50 Hz/1 Ph	76-0010-3
2	Suction Accumulator	89-0058-3
3	Access Valve	83-7325-3
4	Air-Cooled Condenser	88-5145-3
5	Fan Motor	
	a. 208-230V/60 Hz/1 Ph (or 3 Ph)	† 20-0018-9
	b. 208-230V/50 Hz/1 Ph	† 20-0058-3
6	Fan Blade	24-1630-3
7	Head Pressure Control Valve	83-6810-3
8	Fan Cycling Control	† 20-0126-3
9	High Pressure Cut-Out Control	† 20-0124-3
10	Low Pressure Cut-Out Control	20-0222-9
11	Start Relay 60 Hz/1 Ph	20-0755-9
	a. 50 Hz/1 Ph	20-0753-9
12	Contactors 50-60 Hz/1 Ph	20-0660-9
	a. 60 Hz/3 Ph	† 20-0661-9
13	Start Capacitor 50-60 Hz/1 Ph	† 85-0385-3
14	Run Capacitor 50-60 Hz/1 Ph	† 20-1013-3
	Miscellaneous – Brackets, Screws, etc.	
15	Fan Shroud	603704-1
16	Fan Motor Mounting Bracket	30-0682-3
17	Fan Motor Mounting Screw	† 50-3358-9
	a. Fan Motor Mounting Lockwasher	† 55-4511-9
	b. Fan Motor Mounting Hexnut	† 54-2952-9
18	Fan Bracket Mounting Screw	† 50-3358-9
	a. Fan Bracket Mounting Lockwasher	† 55-4511-9
	b. Fan Bracket Mounting Flatwasher	† 55-7305-9
	c. Fan Bracket Mounting Rubber Wellnut	† 54-2955-9
19	Screw, #10-24 x .50 (Used for Panel Attachment – Not shown)	† 52-0206-9
20	Capacitor Mounting Bracket	603498-1
21	Capacitor Mounting Strap	602160-1
22	Terminal Block (50 Hz Only)	20-0614-3
23	Ground Screw	† 52-0216-9
24	Suction Line Filter	† 82-5053-9

† Refer to Cross Reference Guide

CVD875 CONDENSING UNIT PANELS



pt1287

DESCRIPTION

	PART NO.
1 Condenser Fan Guard	34-0689-3
2 Control Box Cover	† 604017-1
3 Control Box Panel	603707-1
4 Left Side Panel	603705-1
5 Cover Top	603475-1
6 Right Side Panel	603470-1
7 Bracket	† 604226-1

Miscellaneous – Brackets, Screws, etc.

8 Screw, #10-24 x .50 Hex	† 52-0206-9
---------------------------------	-------------

† Refer to Cross Reference Guide

INTENTIONALLY LEFT BLANK